

DATA SHEET

Three Phase Induction Motor - Squirrel Cage



Customer :				
Product line	: Jet Pump - J type Standard Efficiency Three-Phase	Product code :	13952937	
Frame	: 56J	Cooling method	: IC411 - TEFC	
Insulation class	: F	Mounting	: F-1	
Duty cycle	: Cont.(S1)	Rotation ¹	: CCW	
Ambient temperature	: -20°C to +40°C	Starting method	: Direct On Line	
Altitude	: 1000 m.a.s.l.	Approx. weight ²	: 11.3 kg	
Protection degree	: IP55	Moment of inertia (J)	: 0.0027 kgm ²	
Output [HP]	0.75	0.75	0.75	
Poles	4	4	4	
Frequency [Hz]	60	50	50	
Rated voltage [V]	208-230/460	190-220/380	415	
Rated current [A]	2.70-2.44/1.22	2.74-2.37/1.37	1.38	
L. R. Amperes [A]	18.6-16.8/8.42	15.3-13.3/7.67	8.56	
LRC [A]	6.9x(Code K)	5.6x(Code H)	6.2x(Code K)	
No load current [A]	1.55-1.80/0.900	1.71-1.48/0.856	1.09	
Rated speed [RPM]	1755	1440	1450	
Slip [%]	2.50	4.00	3.33	
Rated torque [kgfm]	0.310	0.378	0.375	
Locked rotor torque [%]	240	170	220	
Breakdown torque [%]	300	229	290	
Service factor		1.15	1.15	
Temperature rise	80 K	80 K	80 K	
Locked rotor time	30s (cold) 17s (hot)	0s (cold) 0s (hot)	0s (cold) 0s (hot)	
Noise level ²	52.0 dB(A)	49.0 dB(A)	49.0 dB(A)	
Efficiency (%)	25%			
	50%	72.0	68.6	
	75%	77.0	74.2	
	100%	78.5	76.1	
Power Factor	25%			
	50%	0.48	0.49	
	75%	0.61	0.62	
	100%	0.72	0.73	
Bearing type	: <u>Drive end</u> 6203 2RS <u>Non drive end</u> 6202 2RS	Foundation loads		
Sealing	: V'Ring Without Bearing Seal	Max. traction	: 29 kgf	
Lubrication interval	: - -	Max. compression	: 40 kgf	
Lubricant amount	: - -			
Lubricant type	: Mobil Polyrex EM			
Notes USABLE @208V SF 1.00				
This revision replaces and cancel the previous one, which must be eliminated. (1) Looking the motor from the shaft end. (2) Measured at 1m and with tolerance of +3dB(A). (3) Approximate weight subject to changes after manufacturing process. (4) At 100% of full load.		These are average values based on tests with sinusoidal power supply, subject to the tolerances stipulated in NEMA MG-1.		
Rev.	Changes Summary	Performed	Checked	Date
Performed by				
Checked by			Page	Revision
Date	11/05/2022		1 / 4	

LOAD PERFORMANCE CURVE

Three Phase Induction Motor - Squirrel Cage

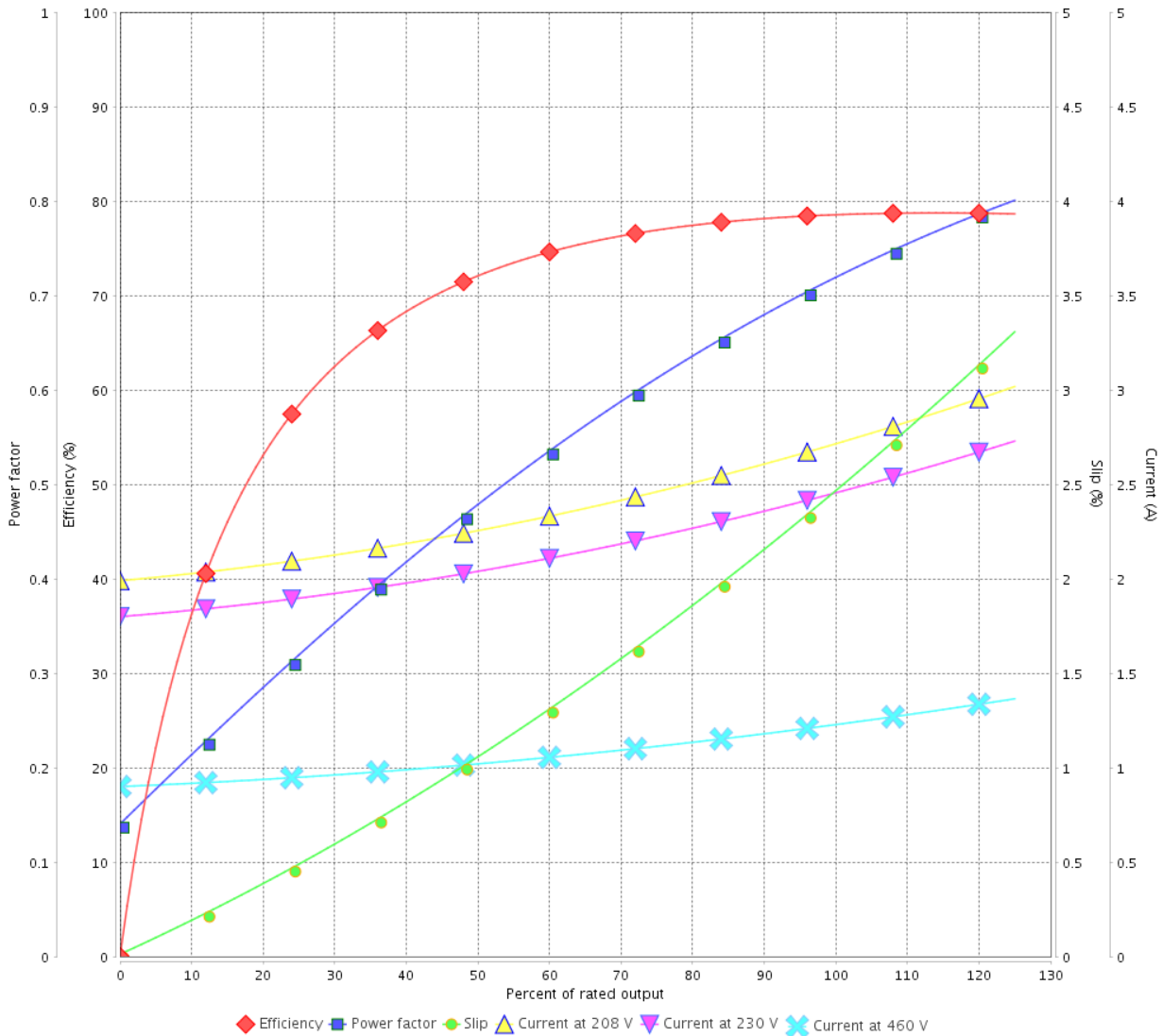


Customer :

Product line : Jet Pump - J type Standard
Efficiency Three-Phase

Product code : 13952937

LOAD PERFORMANCE CURVE



Performance : 208-230/460 V 60 Hz 4P

Rated current : 2.70-2.44/1.22 A
 LRC : 6.9
 Rated torque : 0.310 kgfm
 Locked rotor torque : 240 %
 Breakdown torque : 300 %
 Rated speed : 1755 rpm

Moment of inertia (J) : 0.0027 kgm²
 Duty cycle : Cont.(S1)
 Insulation class : F
 Service factor :
 Temperature rise : 80 K

Rev.	Changes Summary	Performed	Checked	Date
Performed by			Page 2 / 4	Revision
Checked by				
Date	11/05/2022			

LOAD PERFORMANCE CURVE

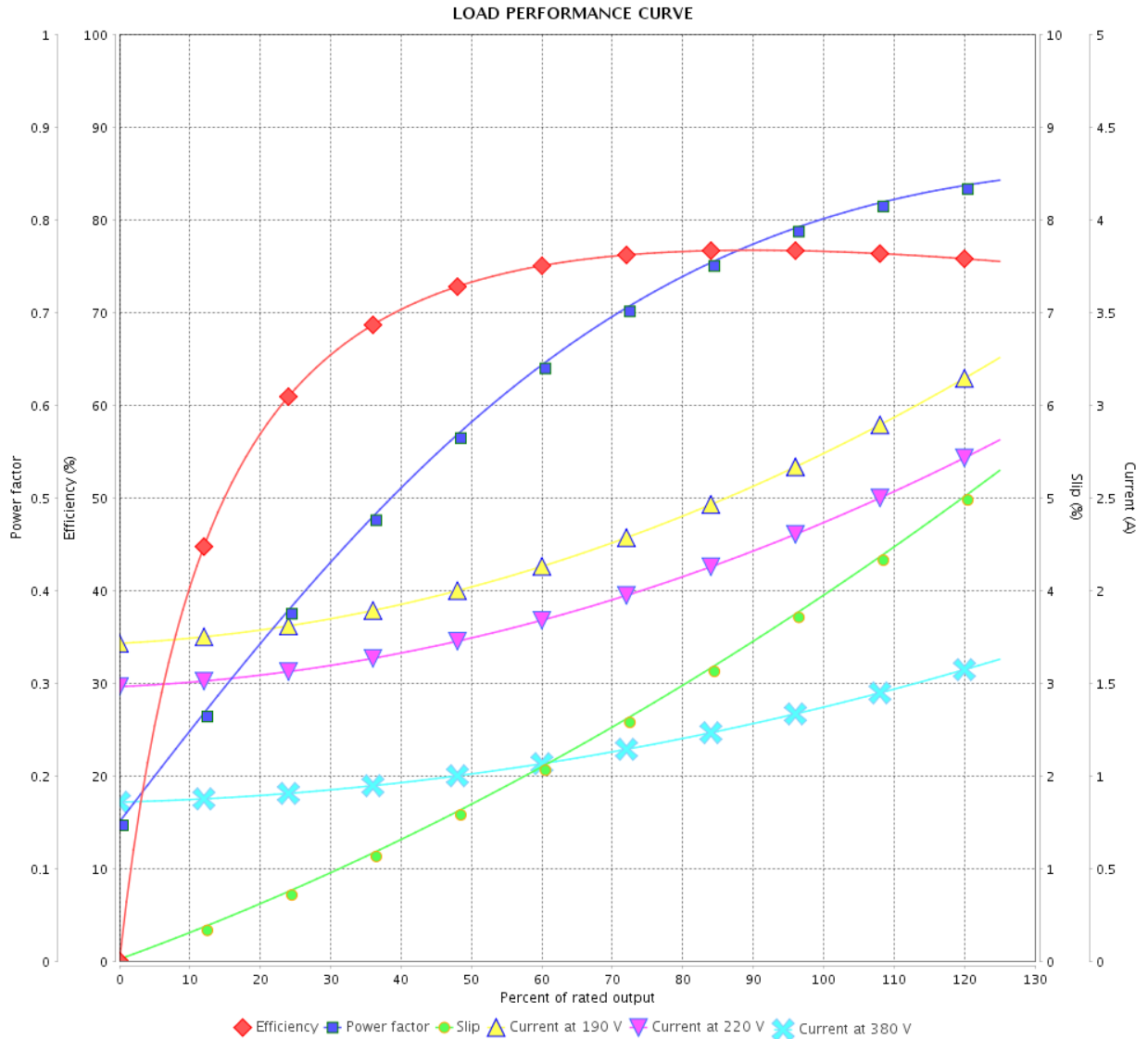
Three Phase Induction Motor - Squirrel Cage



Customer :

Product line : Jet Pump - J type Standard
Efficiency Three-Phase

Product code : 13952937



Performance : 190-220/380 V 50 Hz 4P

Rated current : 2.74-2.37/1.37 A
 LRC : 5.6
 Rated torque : 0.378 kgfm
 Locked rotor torque : 170 %
 Breakdown torque : 229 %
 Rated speed : 1440 rpm

Moment of inertia (J) : 0.0027 kgm²
 Duty cycle : Cont.(S1)
 Insulation class : F
 Service factor : 1.15
 Temperature rise : 80 K

Rev.	Changes Summary	Performed	Checked	Date
Performed by		Page		Revision
Checked by		3 / 4		
Date		11/05/2022		

LOAD PERFORMANCE CURVE

Three Phase Induction Motor - Squirrel Cage

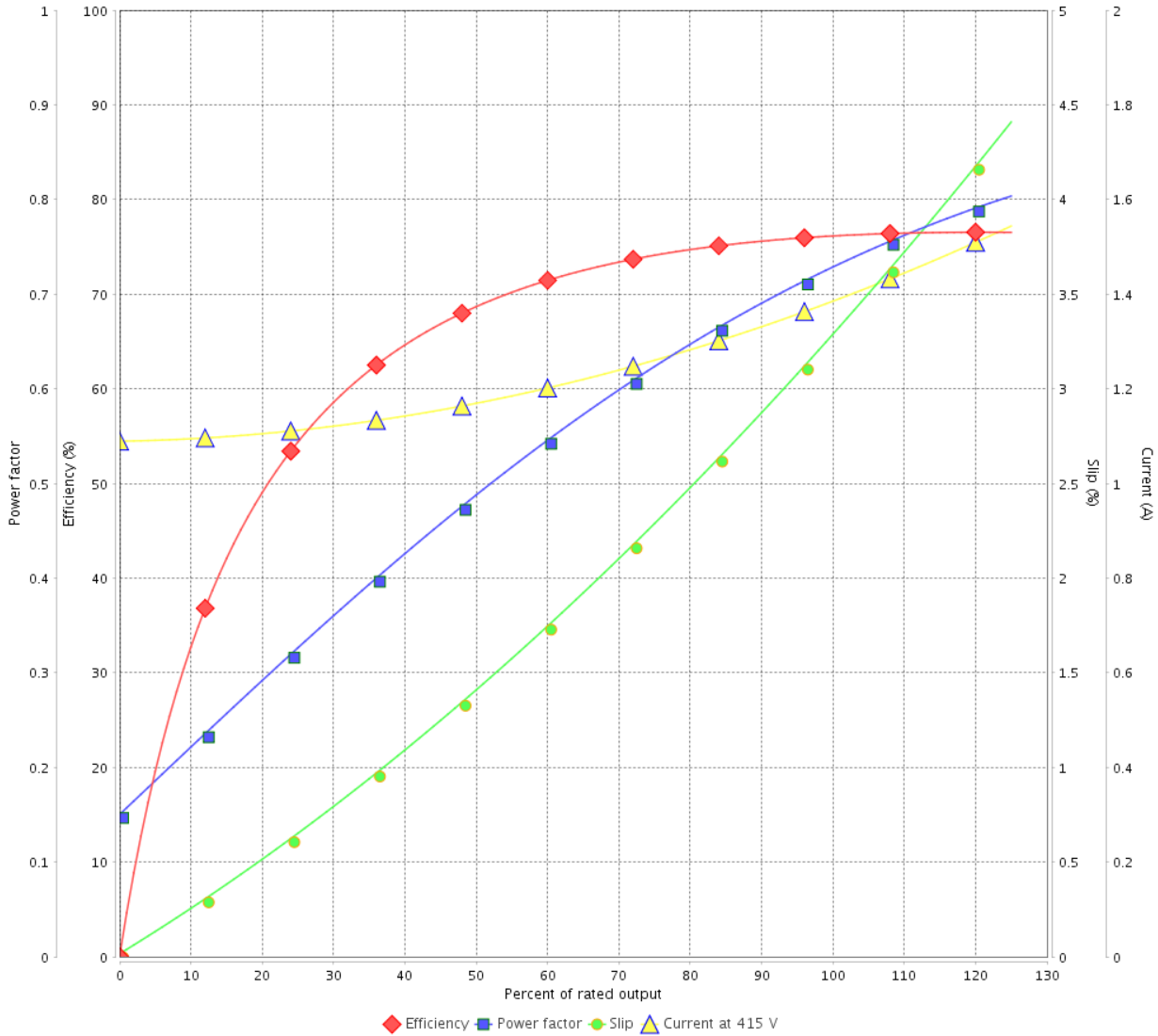


Customer :

Product line : Jet Pump - J type Standard
Efficiency Three-Phase

Product code : 13952937

LOAD PERFORMANCE CURVE



Performance : 415 V 50 Hz 4P

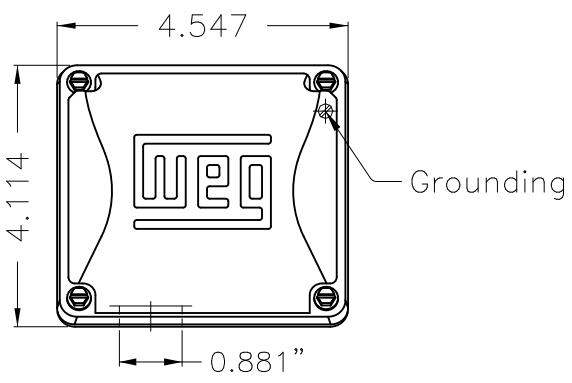
Rated current : 1.38 A
LRC : 6.2
Rated torque : 0.375 kgfm
Locked rotor torque : 220 %
Breakdown torque : 290 %
Rated speed : 1450 rpm

Moment of inertia (J) : 0.0027 kgm²
Duty cycle : Cont.(S1)
Insulation class : F
Service factor : 1.15
Temperature rise : 80 K

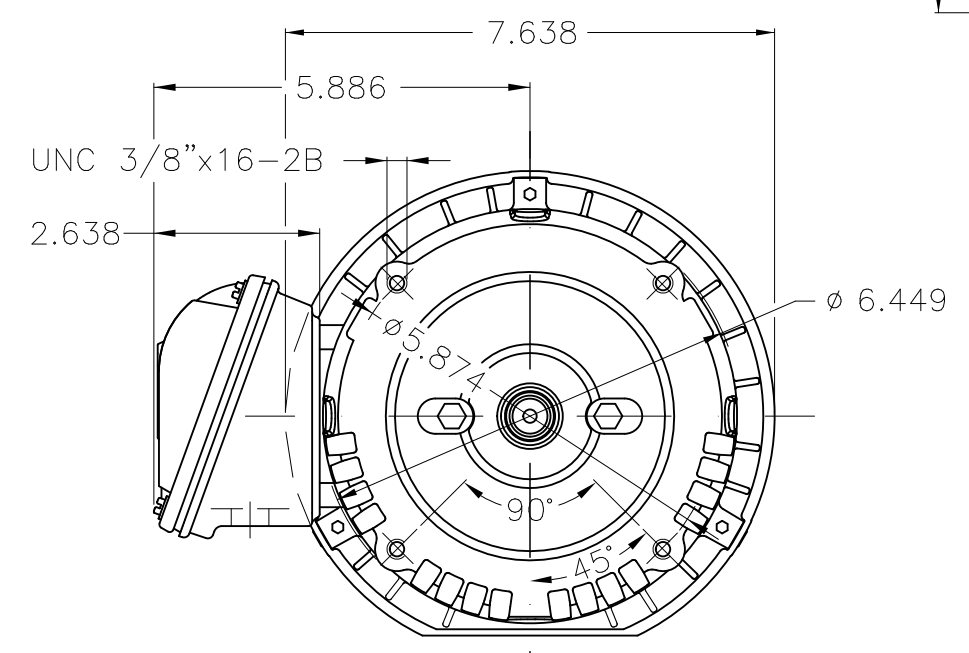
Rev.	Changes Summary	Performed	Checked	Date
Performed by			Page	Revision
Checked by				
Date				

1 2 3 4 5 6

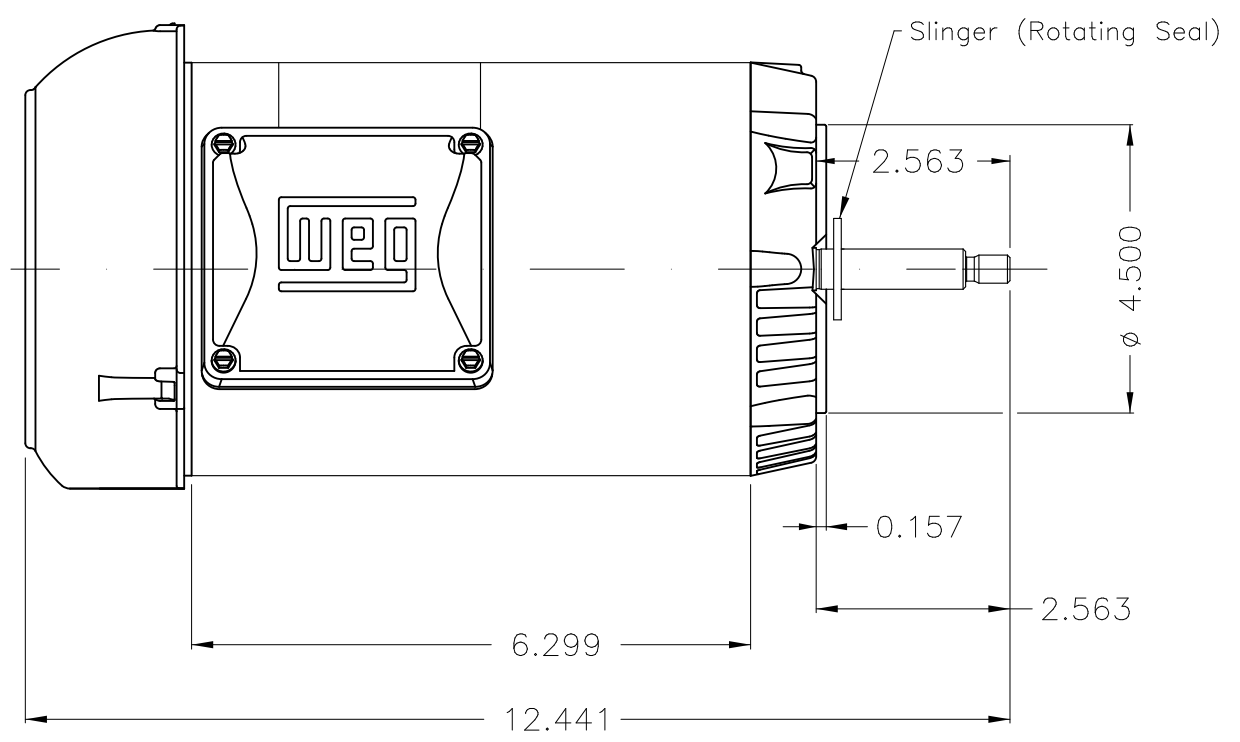
A



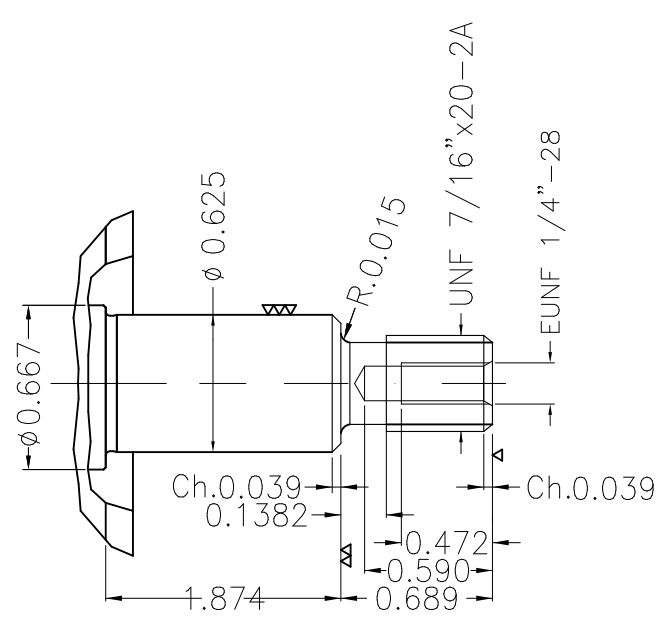
B



C



D



E

Color Munsell N 1 matte black
 Painting plan 207N
 Mounting F-1/B14R(D)

						HYBRISUSER				00	
ECM	LOC	SUMMARY OF MODIFICATIONS				EXECUTED	CHECKED	RELEASED	DATE	VER	
EXECUTED	HYBRISUSER	THREE PH. MOTOR ROLLED STEEL JET PUMP THREADED									PREVIEW WDD 00 SHEET 1 / 1
CHECKED		FRAME 56J IP55 TEFC									
RELEASED											
REL. DATE		WMO	Jaragua do Sul	Product Engineering							

0.75 HP 04 Poles 60 Hz