

DATA SHEET

Three Phase Induction Motor - Squirrel Cage



Customer :				
Product line		: Jet Pump - J type Premium Efficiency Three-Phase		Product code : 13957011
Frame	: 56J	Cooling method	: IC411 - TEFC	
Insulation class	: F	Mounting	: F-1	
Duty cycle	: Cont.(S1)	Rotation ¹	: CCW	
Ambient temperature	: -20°C to +40°C	Starting method	: Direct On Line	
Altitude	: 1000 m.a.s.l.	Approx. weight ³	: 16.3 kg	
Protection degree	: IP55	Moment of inertia (J)	: 0.0052 kgm ²	
Design	: B			
Output [HP]	1			
Poles	4			
Frequency [Hz]	60			
Rated voltage [V]	575			
Rated current [A]	1.18			
L. R. Amperes [A]	10.1			
LRC [A]	8.6x(Code M)			
No load current [A]	0.712			
Rated speed [RPM]	1765			
Slip [%]	1.94			
Rated torque [kgfm]	0.411			
Locked rotor torque [%]	280			
Breakdown torque [%]	300			
Service factor	1.15			
Temperature rise	80 K			
Locked rotor time	34s (cold) 19s (hot)			
Noise level ²	52.0 dB(A)			
Efficiency (%)	25%			
	50%	82.5		
	75%	84.0		
	100%	85.5		
Power Factor	25%			
	50%	0.52		
	75%	0.66		
	100%	0.75		
Bearing type	: Drive end 6203 2RS	Non drive end 6202 2RS	Foundation loads	
Sealing	: V'Ring	Without Bearing Seal	Max. traction : 31 kgf	
Lubrication interval	: -	-	Max. compression : 48 kgf	
Lubricant amount	: -	-		
Lubricant type	: Mobil Polyrex EM			
Notes				
This revision replaces and cancel the previous one, which must be eliminated. (1) Looking the motor from the shaft end. (2) Measured at 1m and with tolerance of +3dB(A). (3) Approximate weight subject to changes after manufacturing process. (4) At 100% of full load.			These are average values based on tests with sinusoidal power supply, subject to the tolerances stipulated in NEMA MG-1.	
Rev.	Changes Summary		Performed	Checked
Performed by				
Checked by			Page	Revision
Date	11/05/2022		1 / 2	

LOAD PERFORMANCE CURVE

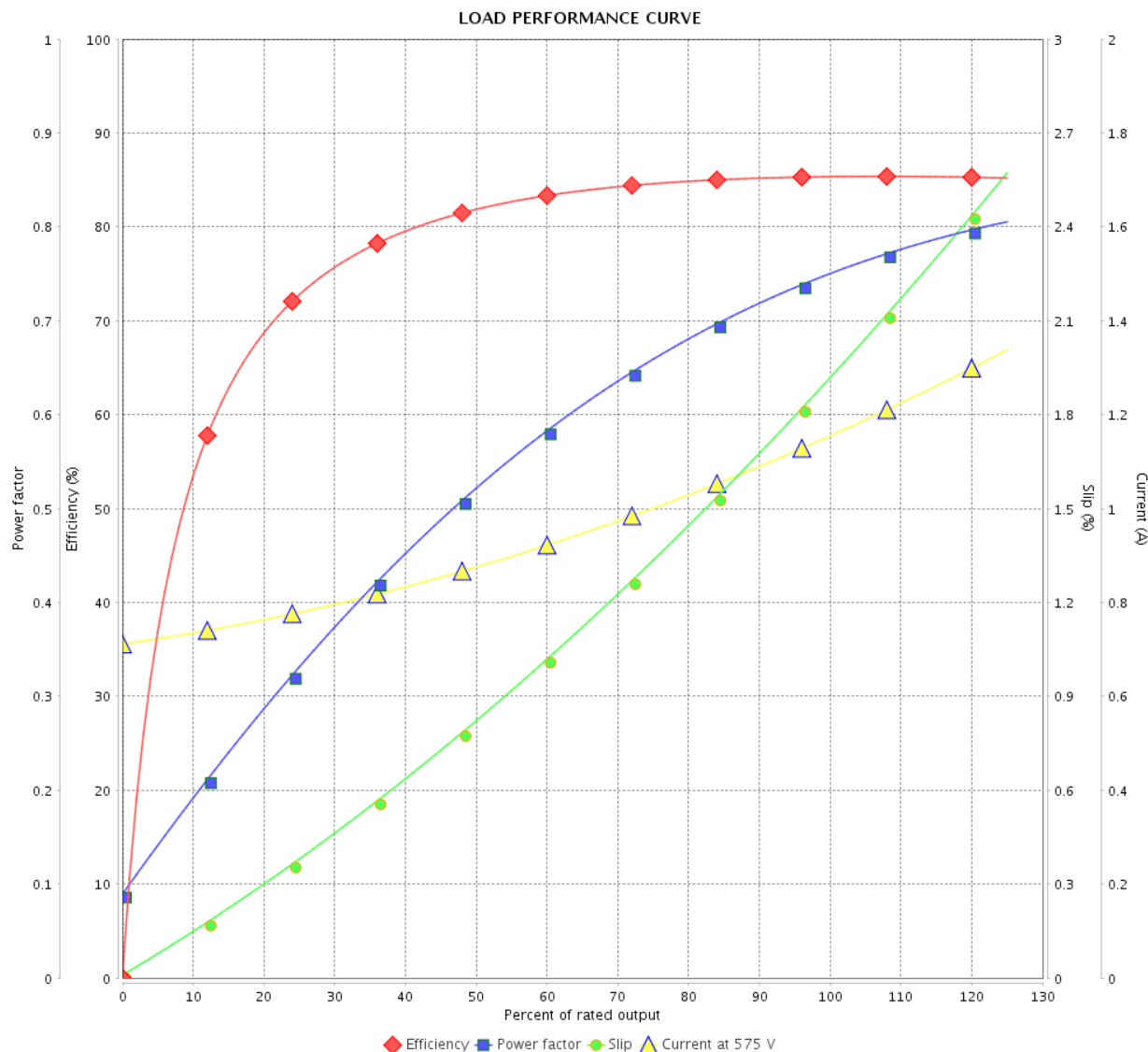
Three Phase Induction Motor - Squirrel Cage



Customer :

Product line : Jet Pump - J type Premium
Efficiency Three-Phase

Product code : 13957011

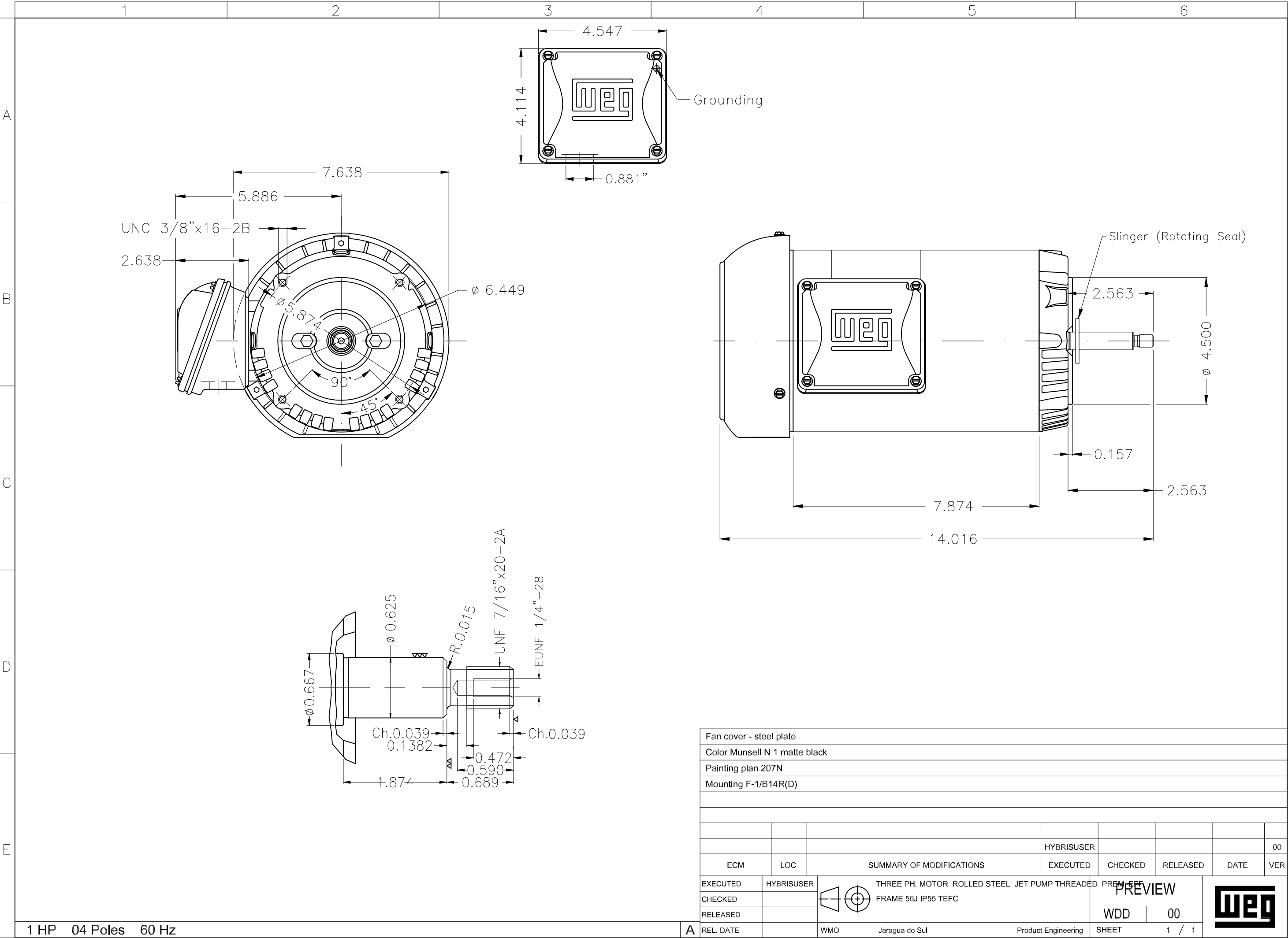


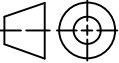

Performance : 575 V 60 Hz 4P

Rated current : 1.18 A
LRC : 8.6
Rated torque : 0.411 kgfm
Locked rotor torque : 280 %
Breakdown torque : 300 %
Rated speed : 1765 rpm

Moment of inertia (J) : 0.0052 kgm²
Duty cycle : Cont.(S1)
Insulation class : F
Service factor : 1.15
Temperature rise : 80 K
Design : B

Rev.	Changes Summary		Performed	Checked	Date
Performed by				Page 2 / 2	Revision
Checked by					
Date	11/05/2022				



Fan cover - steel plate									
Color Munsell N 1 matte black									
Painting plan 207N									
Mounting F-1/B14R(D)									
						HYBRISUSER			00
ECM	LOC	SUMMARY OF MODIFICATIONS				EXECUTED	CHECKED	RELEASED	DATE VER
EXECUTED	HYBRISUSER	<div><div></div><div>THREE PH. MOTOR ROLLED STEEL JET PUMP THREADED PREM EFF FRAME 56J IP55 TEFC</div></div>				<div>PREVIEW</div> <div>WDD 00</div>			
CHECKED									
RELEASED									
REL. DATE		WMO	Jaragua do Sul	Product Engineering	SHEET	1 / 1			