

# DATA SHEET

## Three Phase Induction Motor - Squirrel Cage



Customer :					
Product line : Three-Phase		Product code : 13918325			
Frame : 56H	Insulation class : F	Cooling method : IC01 - ODP	Mounting : F-1		
Duty cycle : Cont.(S1)	Ambient temperature : -20°C to +40°C	Rotation <sup>1</sup> : Both (CW and CCW)	Starting method : Direct On Line		
Altitude : 1000 m.a.s.l.	Design : A	Approx. weight <sup>3</sup> : 16.1 kg	Moment of inertia (J) : 0.0049 kgm <sup>2</sup>		
Output [HP]	2				
Poles	2				
Frequency [Hz]	60				
Rated voltage [V]	575				
Rated current [A]	1.94				
L. R. Amperes [A]	17.2				
LRC [A]	8.9x(Code K)				
No load current [A]	0.734				
Rated speed [RPM]	3510				
Slip [%]	2.50				
Rated torque [kgfm]	0.414				
Locked rotor torque [%]	220				
Breakdown torque [%]	330				
Service factor	1.15				
Temperature rise	80 K				
Locked rotor time	25s (cold) 14s (hot)				
Noise level <sup>2</sup>	62.0 dB(A)				
Efficiency (%)	25%				
	50%	84.0			
	75%	85.5			
	100%	85.5			
Power Factor	25%				
	50%	0.77			
	75%	0.86			
	100%	0.91			
Bearing type : 6204 ZZ	Drive end	Non drive end	Foundation loads		
Sealing : Without			Max. traction : 36 kgf		
	Bearing Seal	Bearing Seal	Max. compression : 52 kgf		
Lubrication interval : -	-	-			
Lubricant amount : -	-	-			
Lubricant type : Mobil Polyrex EM					
Notes					
This revision replaces and cancel the previous one, which must be eliminated. (1) Looking the motor from the shaft end. (2) Measured at 1m and with tolerance of +3dB(A). (3) Approximate weight subject to changes after manufacturing process. (4) At 100% of full load.			These are average values based on tests with sinusoidal power supply, subject to the tolerances stipulated in NEMA MG-1.		
Rev.	Changes Summary		Performed	Checked	Date
Performed by					
Checked by					
Date	11/05/2022			Page 1 / 2	Revision

# LOAD PERFORMANCE CURVE

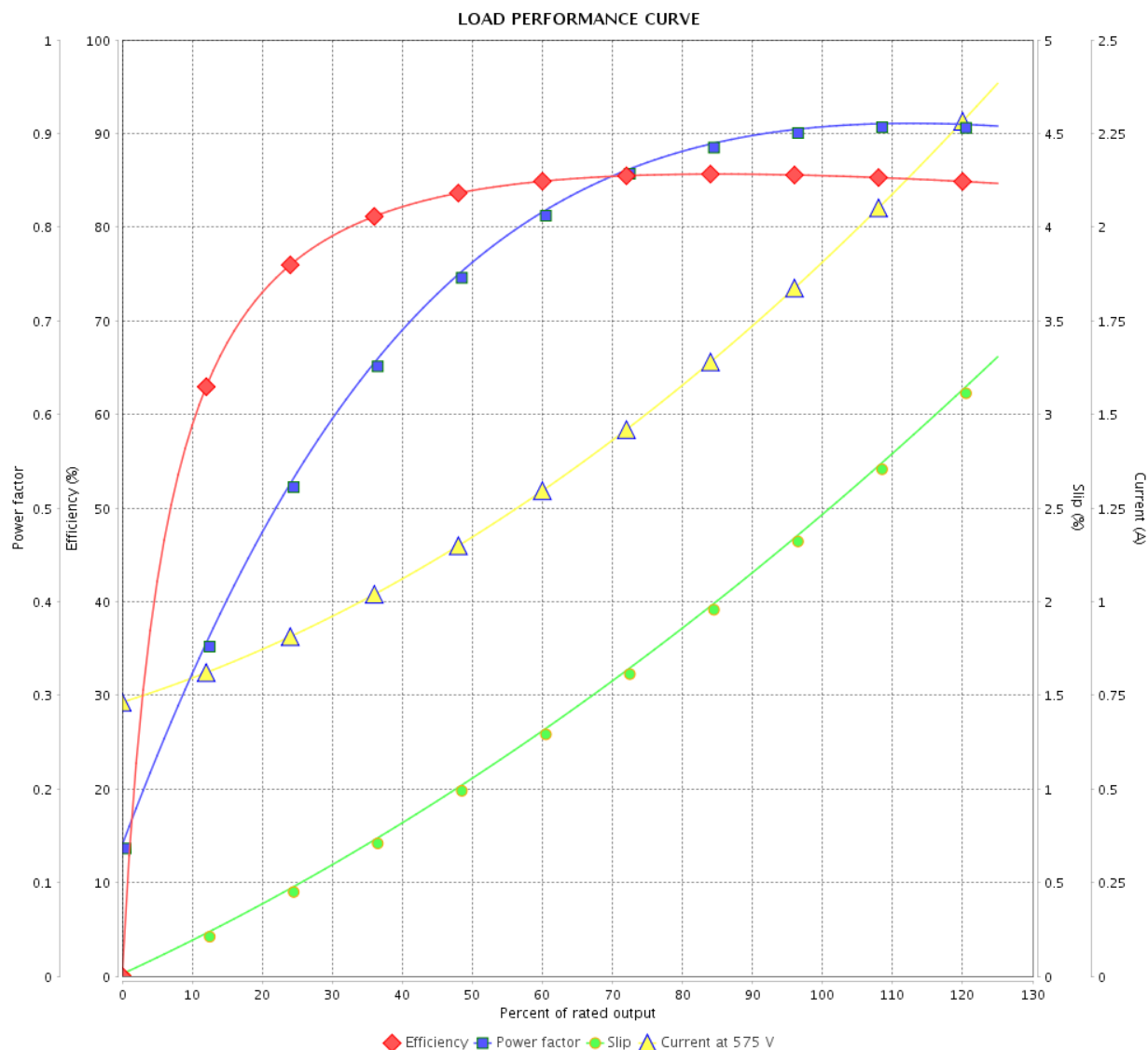
## Three Phase Induction Motor - Squirrel Cage



Customer :

Product line : Three-Phase

Product code : 13918325

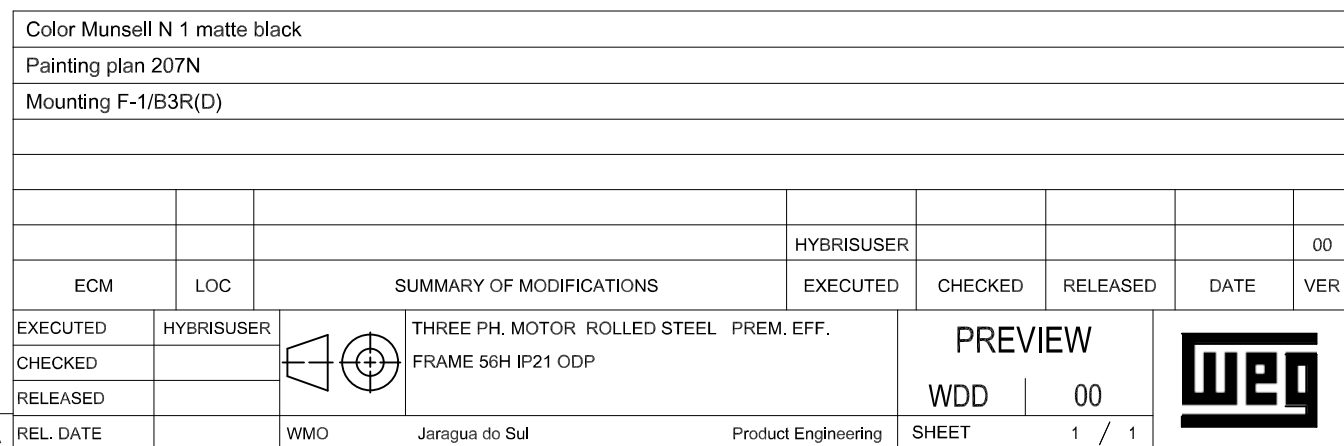
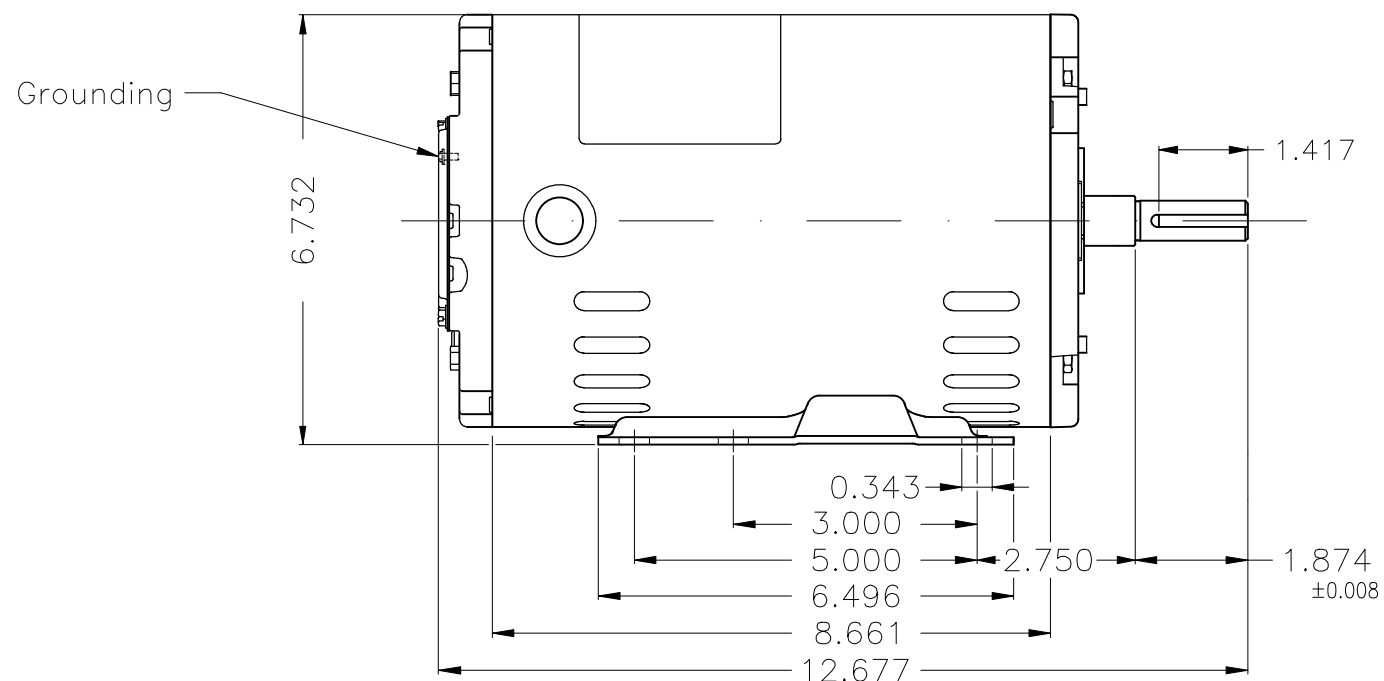


Performance : 575 V 60 Hz 2P

Rated current : 1.94 A  
 LRC : 8.9  
 Rated torque : 0.414 kgfm  
 Locked rotor torque : 220 %  
 Breakdown torque : 330 %  
 Rated speed : 3510 rpm

Moment of inertia (J) : 0.0049 kgm<sup>2</sup>  
 Duty cycle : Cont.(S1)  
 Insulation class : F  
 Service factor : 1.15  
 Temperature rise : 80 K  
 Design : A

Rev.	Changes Summary		Performed	Checked	Date
Performed by				Page 2 / 2	Revision
Checked by					
Date	11/05/2022				



WEG's property. Forbidden reproduction without previous authorization.