

DATA SHEET

Single Phase Induction Motor - Squirrel Cage



Customer					
Product line	: Jet Pump - J type Single-Phase	Product code	: 13950889		
Frame	: 56J	Cooling method	: IC01 - ODP		
Insulation class	: F	Mounting	: F-1		
Duty cycle	: Cont.(S1)	Rotation ¹	: CCW		
Ambient temperature	: -20°C to +40°C	Starting method	: Direct On Line		
Altitude	: 1000 m.a.s.l.	Approx. weight ³	: 19.6 kg		
Design	: L	Moment of inertia (J)	: 0.0036 kgm ²		
Output [HP]	3				
Poles	2				
Frequency [Hz]	60				
Rated voltage [V]	230				
Rated current [A]	13.2				
L. R. Amperes [A]	106				
LRC [A]	8.0x(Code K)				
No load current [A]	4.50				
Rated speed [RPM]	3485				
Slip [%]	3.19				
Rated torque [kgfm]	0.625				
Locked rotor torque [%]	200				
Breakdown torque [%]	250				
Service factor	1.15				
Temperature rise	80 K				
Locked rotor time	10s (cold) 6s (hot)				
Noise level ²	58.0 dB(A)				
Efficiency (%)	25%				
	50%	71.0			
	75%	76.0			
	100%	78.0			
Power Factor	25%				
	50%	0.85			
	75%	0.91			
	100%	0.93			
Bearing type	: <u>Drive end</u> 6203 2RS	<u>Non drive end</u> 6202 2RS	Foundation loads		
Sealing	: Without	Without	Max. traction	: 39 kgf	
	Bearing Seal	Bearing Seal	Max. compression	: 59 kgf	
Lubrication interval	: -	-			
Lubricant amount	: -	-			
Lubricant type	: Mobil Polyrex EM				
Notes					
<p>This revision replaces and cancel the previous one, which must be eliminated.</p> <p>(1) Looking the motor from the shaft end.</p> <p>(2) Measured at 1m and with tolerance of +3dB(A).</p> <p>(3) Approximate weight subject to changes after manufacturing process.</p> <p>(4) At 100% of full load.</p>			<p>These are average values based on tests with sinusoidal power supply, subject to the tolerances stipulated in NEMA MG-1.</p>		
Rev.	Changes Summary		Performed	Checked	Date
Performed by					
Checked by				Page	Revision
Date	11/05/2022			1 / 2	

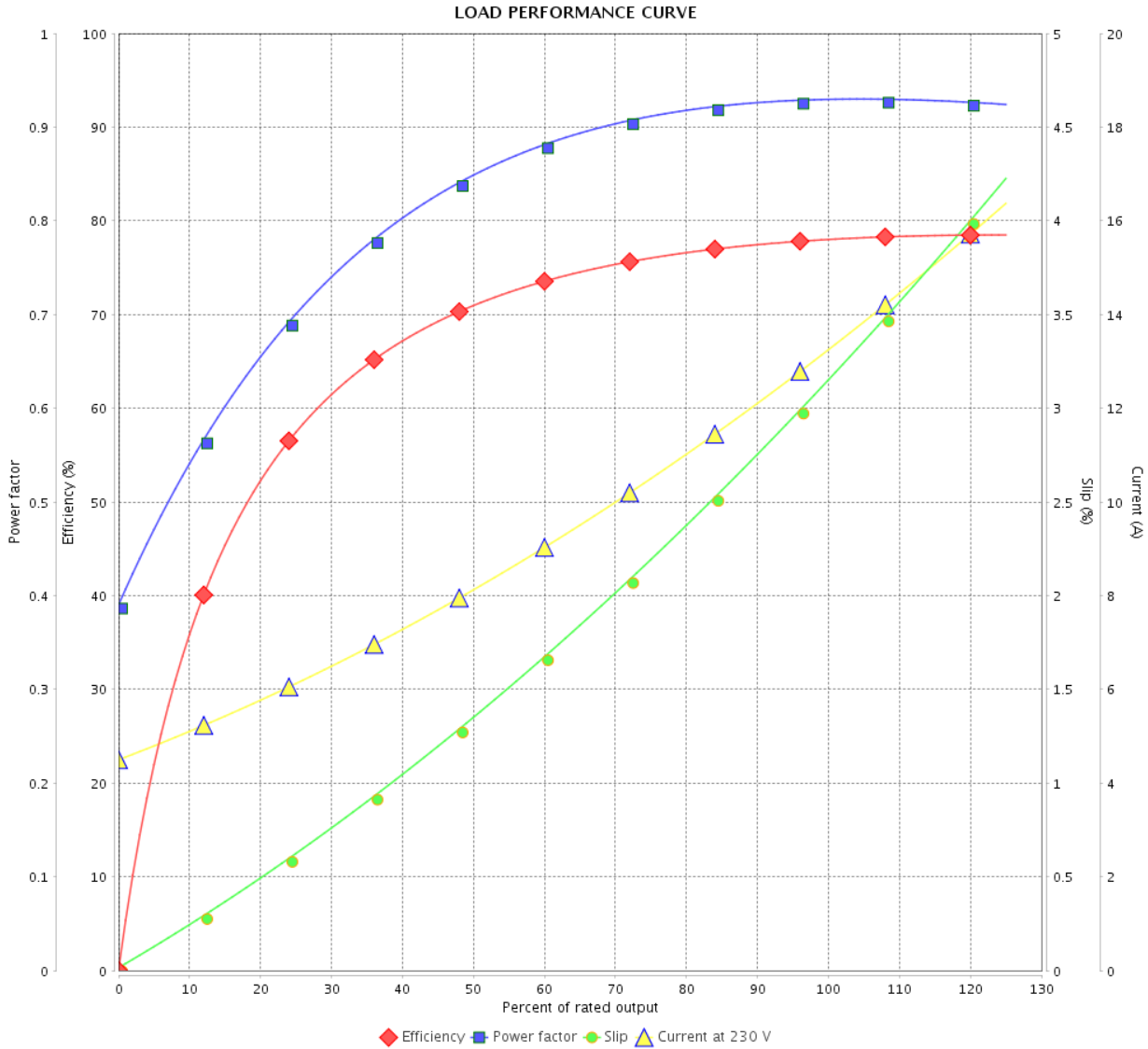
LOAD PERFORMANCE CURVE

Single Phase Induction Motor - Squirrel Cage



Customer :

Product line : Jet Pump - J type Single-Phase Product code : 13950889



Performance : 230 V 60 Hz 2P

Rated current	: 13.2 A	Moment of inertia (J)	: 0.0036 kgm ²
LRC	: 8.0	Duty cycle	: Cont.(S1)
Rated torque	: 0.625 kgfm	Insulation class	: F
Locked rotor torque	: 200 %	Service factor	: 1.15
Breakdown torque	: 250 %	Temperature rise	: 80 K
Rated speed	: 3485 rpm	Design	: L

Rev.	Changes Summary	Performed	Checked	Date
Performed by			Page 2 / 2	Revision
Checked by				
Date	11/05/2022			

1 2 3 4 5 6

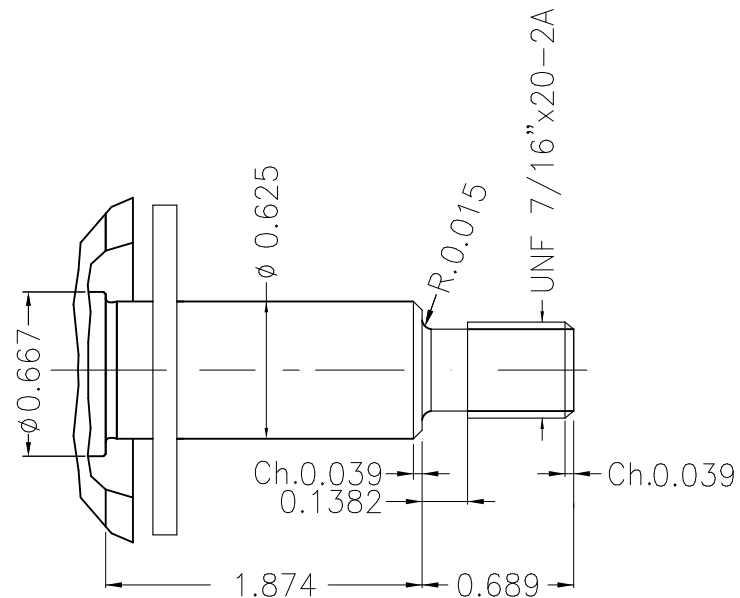
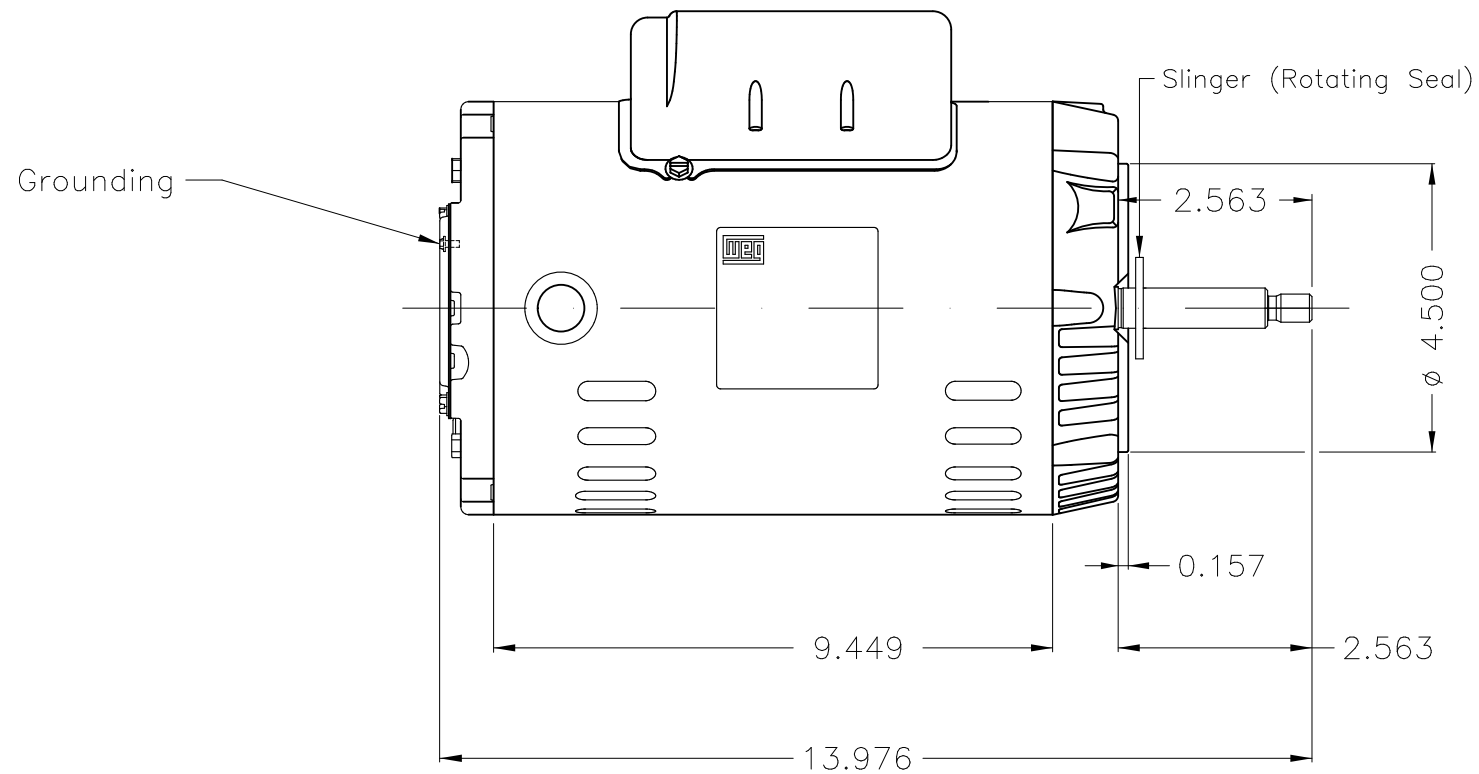
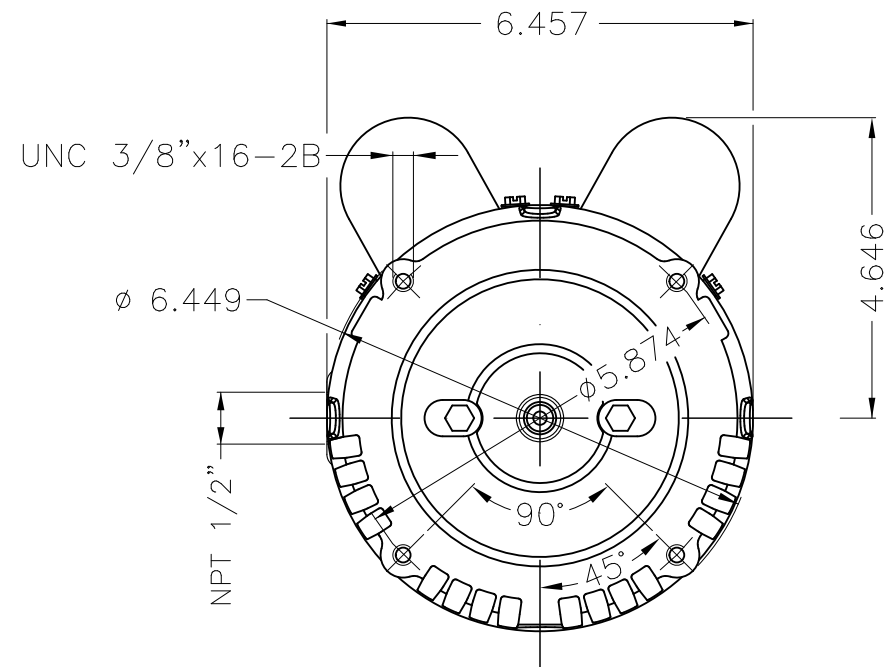
A

B

C

D

E



Color Munsell N 1 matte black
 Painting plan 207N
 Mounting F-1/B14R(D)

						HYBRISUSER						00	
ECM	LOC	SUMMARY OF MODIFICATIONS				EXECUTED	CHECKED	RELEASED	DATE	VER			
EXECUTED	HYBRISUSER	SINGLE PH. MOTOR ROLLED STEEL JET PUMP THREADED				EXECUTED	CHECKED	RELEASED	DATE	VER	PREVIEW		
CHECKED		FRAME 56J IP21 ODP				EXECUTED	CHECKED	RELEASED	DATE	VER	WDD 00		
RELEASED						EXECUTED	CHECKED	RELEASED	DATE	VER	SHEET 1 / 1		
REL. DATE		WMO	Jaragua do Sul	Product Engineering									

3 HP 02 Poles 60 Hz

A