

DATA SHEET

Single Phase Induction Motor - Squirrel Cage



Customer :				
Product line : Single-Phase		Product code : 13905941		
Frame : 56 Insulation class : F Duty cycle : Cont.(S1) Ambient temperature : -20°C to +40°C Altitude : 1000 m.a.s.l. Protection degree : IP55 Design : N		Cooling method : IC411 - TEFC Mounting : F-1 Rotation ¹ : Both (CW and CCW) Starting method : Direct On Line Approx. weight ³ : 16.0 kg Moment of inertia (J) : 0.0052 kgm²		
Output [HP]		0.5		
Poles		6		
Frequency [Hz]		60		
Rated voltage [V]		115/208-230		
Rated current [A]		6.40/3.54-3.20		
L. R. Amperes [A]		42.2/23.4-21.1		
LRC [A]		6.6x(Code L)		
No load current [A]		4.40/1.90-2.20		
Rated speed [RPM]		1170		
Slip [%]		2.50		
Rated torque [kgfm]		0.310		
Locked rotor torque [%]		240		
Breakdown torque [%]		260		
Service factor				
Temperature rise		80 K		
Locked rotor time		32s (cold) 18s (hot)		
Noise level ²		54.0 dB(A)		
Efficiency (%)	25%			
	50%	54.0		
	75%	63.0		
	100%	67.0		
Power Factor	25%			
	50%	0.58		
	75%	0.67		
	100%	0.72		
Bearing type : Drive end 6203 ZZ Non drive end 6202 ZZ Sealing : V'Ring V'Ring Lubrication interval : - - Lubricant amount : - - Lubricant type : Mobil Polyrex EM		Foundation loads Max. traction : 17 kgf Max. compression : 33 kgf		
Notes				
This revision replaces and cancel the previous one, which must be eliminated. (1) Looking the motor from the shaft end. (2) Measured at 1m and with tolerance of +3dB(A). (3) Approximate weight subject to changes after manufacturing process. (4) At 100% of full load.		These are average values based on tests with sinusoidal power supply, subject to the tolerances stipulated in NEMA MG-1.		
Rev.	Changes Summary		Performed	Checked
Performed by				
Checked by			Page	Revision
Date	11/05/2022		1 / 2	

LOAD PERFORMANCE CURVE

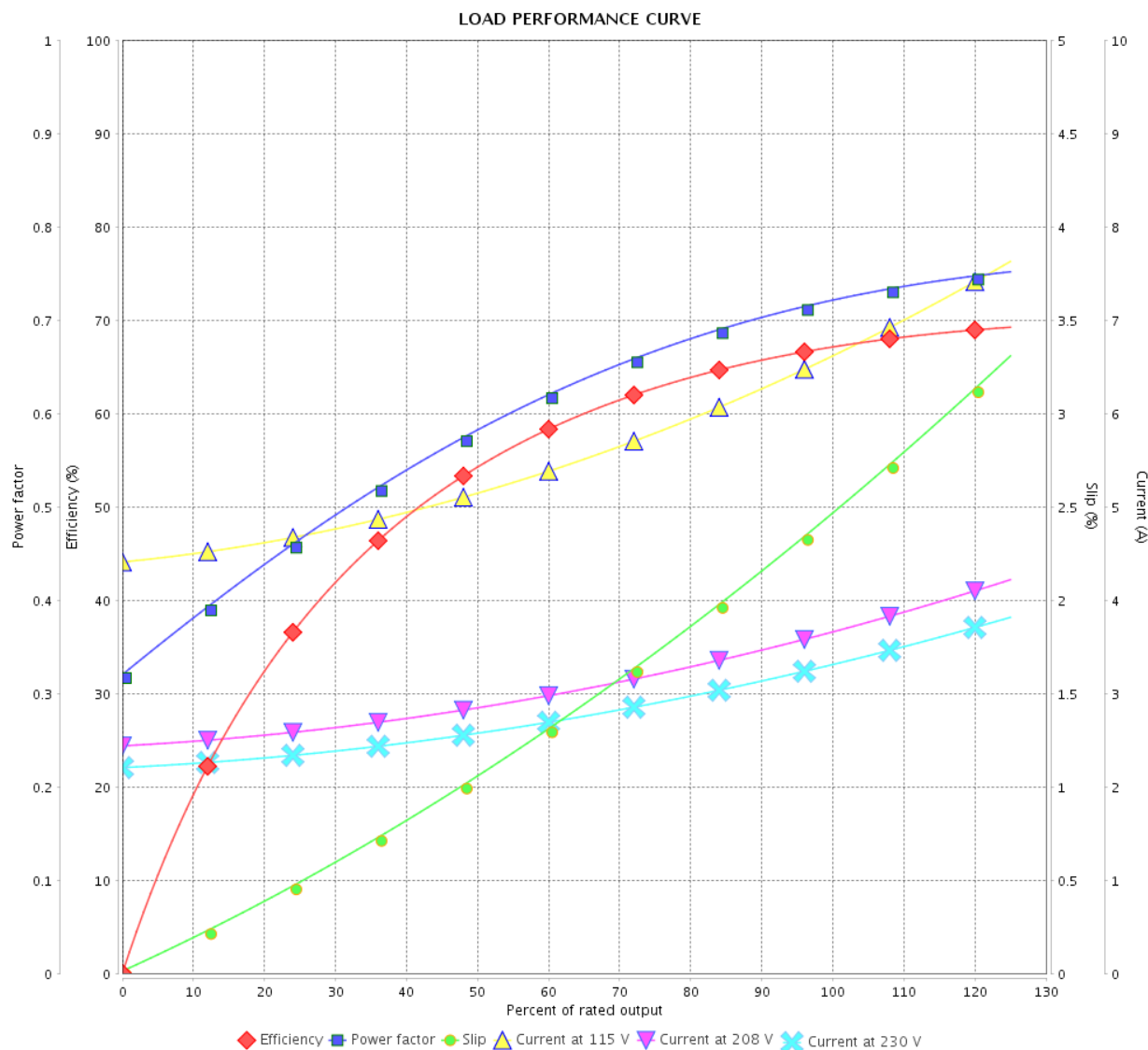
Single Phase Induction Motor - Squirrel Cage



Customer :

Product line : Single-Phase

Product code : 13905941

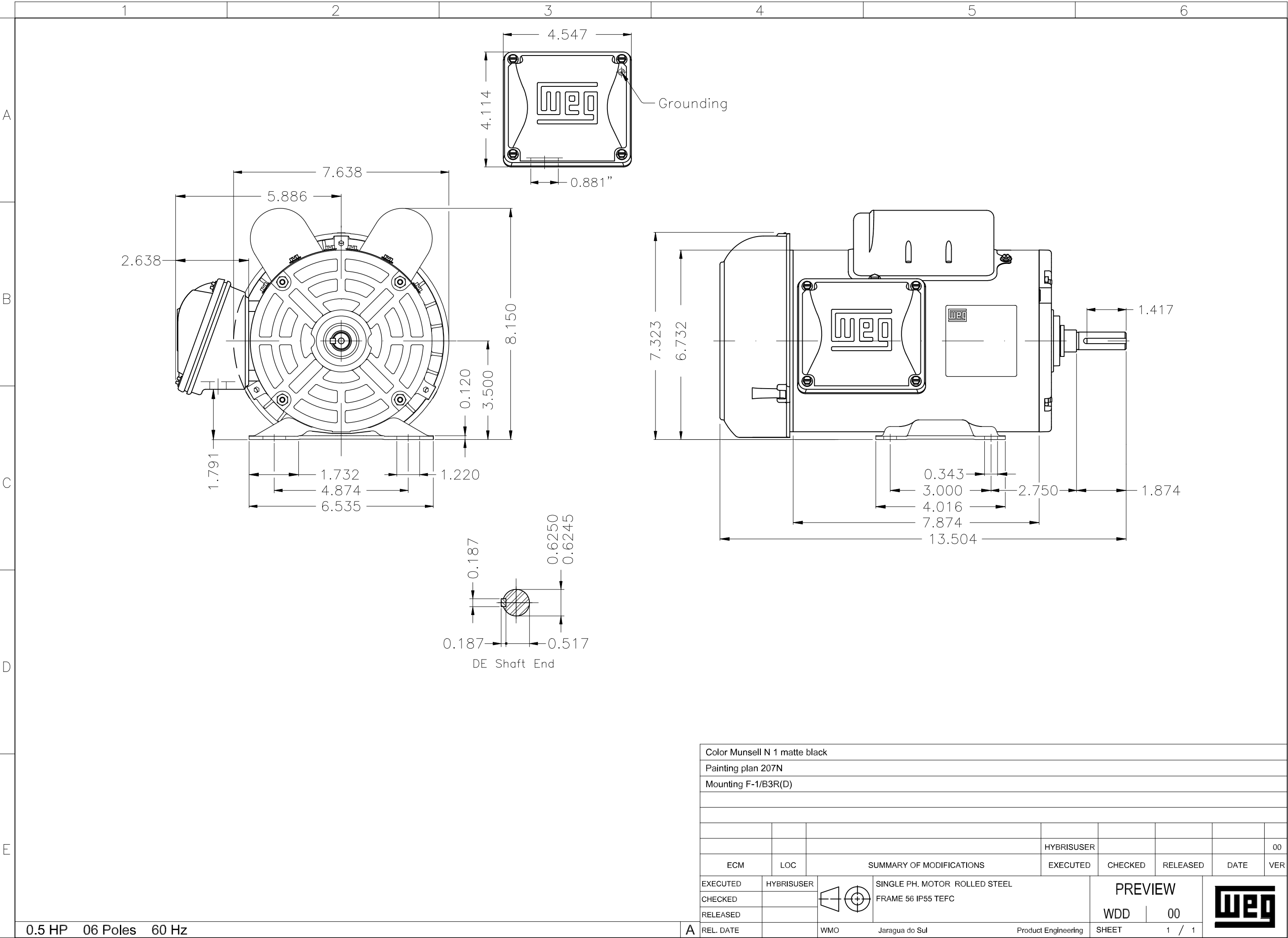


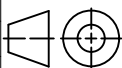

Performance : 115/208-230 V 60 Hz 6P

Rated current : 6.40/3.54-3.20 A
 LRC : 6.6
 Rated torque : 0.310 kgfm
 Locked rotor torque : 240 %
 Breakdown torque : 260 %
 Rated speed : 1170 rpm

Moment of inertia (J) : 0.0052 kgm²
 Duty cycle : Cont.(S1)
 Insulation class : F
 Service factor :
 Temperature rise : 80 K
 Design : N

Rev.	Changes Summary		Performed	Checked	Date
Performed by				Page 2 / 2	Revision
Checked by					
Date	11/05/2022				



Color Munsell N 1 matte black									
Painting plan 207N									
Mounting F-1/B3R(D)									
						HYBRISUSER			00
ECM	LOC	SUMMARY OF MODIFICATIONS				EXECUTED	CHECKED	RELEASED	DATE VER
EXECUTED	HYBRISUSER		SINGLE PH. MOTOR ROLLED STEEL FRAME 56 IP55 TEFC			PREVIEW WDD 00			
CHECKED									
RELEASED									
REL. DATE									
		WMO	Jaragua do Sul	Product Engineering	SHEET	1 / 1			