

# DATA SHEET

## Single Phase Induction Motor - Squirrel Cage



Customer :				
Product line		: Jet Pump - J type Single-Phase	Product code : 13905943	
Frame	: 56J	Cooling method	: IC411 - TEFC	
Insulation class	: F	Mounting	: F-1	
Duty cycle	: Cont.(S1)	Rotation <sup>1</sup>	: CCW	
Ambient temperature	: -20°C to +40°C	Starting method	: Direct On Line	
Altitude	: 1000 m.a.s.l.	Approx. weight <sup>3</sup>	: 11.6 kg	
Protection degree	: IP55	Moment of inertia (J)	: 0.0017 kgm <sup>2</sup>	
Design	: N			
Output [HP]	0.75			
Poles	2			
Frequency [Hz]	60			
Rated voltage [V]	115/208-230			
Rated current [A]	8.00/4.42-4.00			
L. R. Amperes [A]	64.0/35.4-32.0			
LRC [A]	8.0x(Code L)			
No load current [A]	4.00/1.72-2.00			
Rated speed [RPM]	3500			
Slip [%]	2.78			
Rated torque [kgfm]	0.156			
Locked rotor torque [%]	280			
Breakdown torque [%]	290			
Service factor				
Temperature rise	80 K			
Locked rotor time	18s (cold) 10s (hot)			
Noise level <sup>2</sup>	68.0 dB(A)			
Efficiency (%)	25%			
	50%	52.0		
	75%	62.0		
	100%	66.0		
Power Factor	25%			
	50%	0.81		
	75%	0.87		
	100%	0.91		
Bearing type	: Drive end 6203 2RS Non drive end 6202 2RS	Foundation loads		
Sealing	: V'Ring V'Ring	Max. traction : 8 kgf		
Lubrication interval	: - -	Max. compression : 20 kgf		
Lubricant amount	: - -			
Lubricant type	: Mobil Polyrex EM			
Notes				
This revision replaces and cancel the previous one, which must be eliminated. (1) Looking the motor from the shaft end. (2) Measured at 1m and with tolerance of +3dB(A). (3) Approximate weight subject to changes after manufacturing process. (4) At 100% of full load.		These are average values based on tests with sinusoidal power supply, subject to the tolerances stipulated in NEMA MG-1.		
Rev.	Changes Summary		Performed	Checked
Performed by				
Checked by			Page	Revision
Date	11/05/2022		1 / 2	

# LOAD PERFORMANCE CURVE

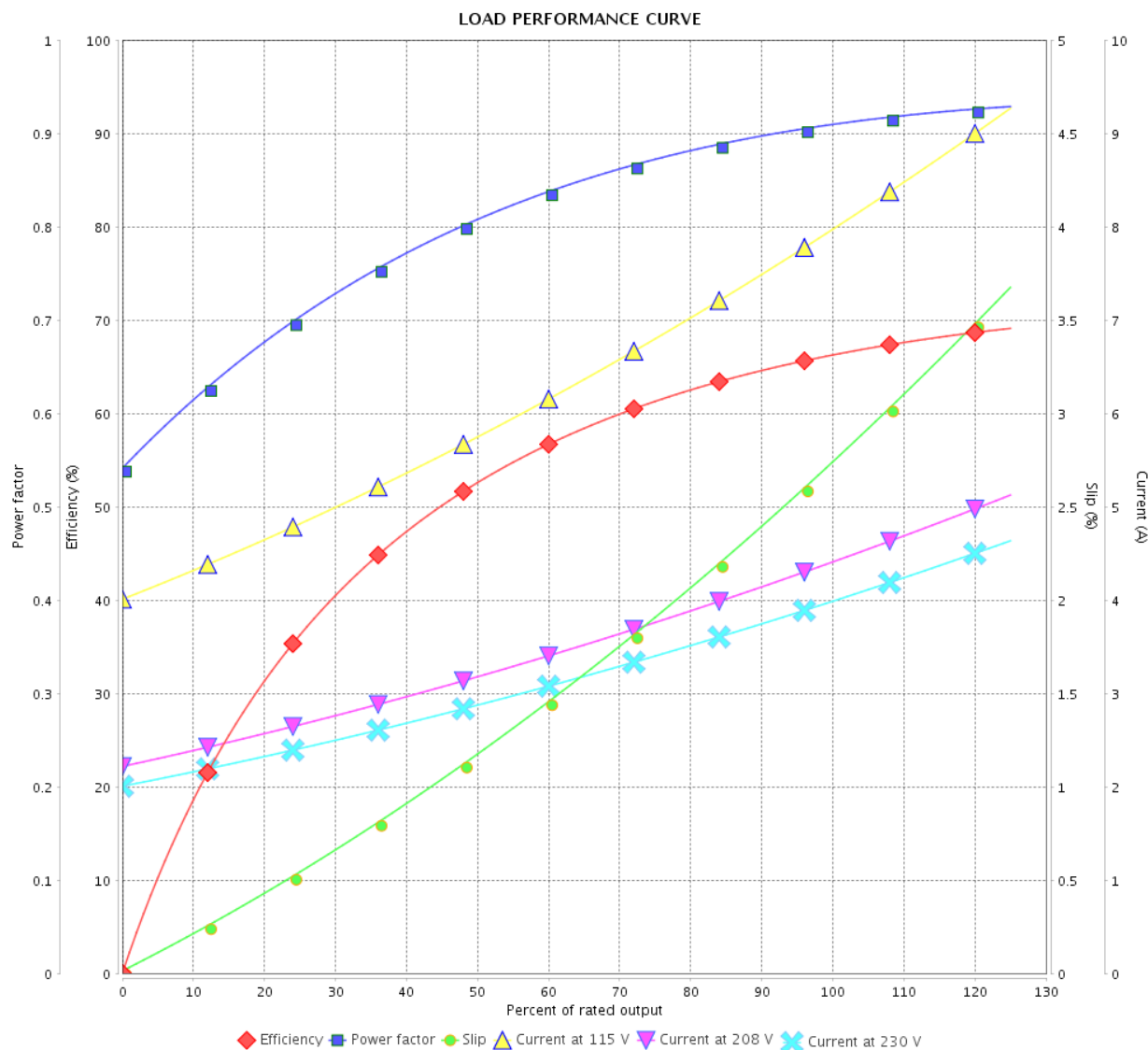
Single Phase Induction Motor - Squirrel Cage



Customer :

Product line : Jet Pump - J type Single-Phase

Product code : 13905943

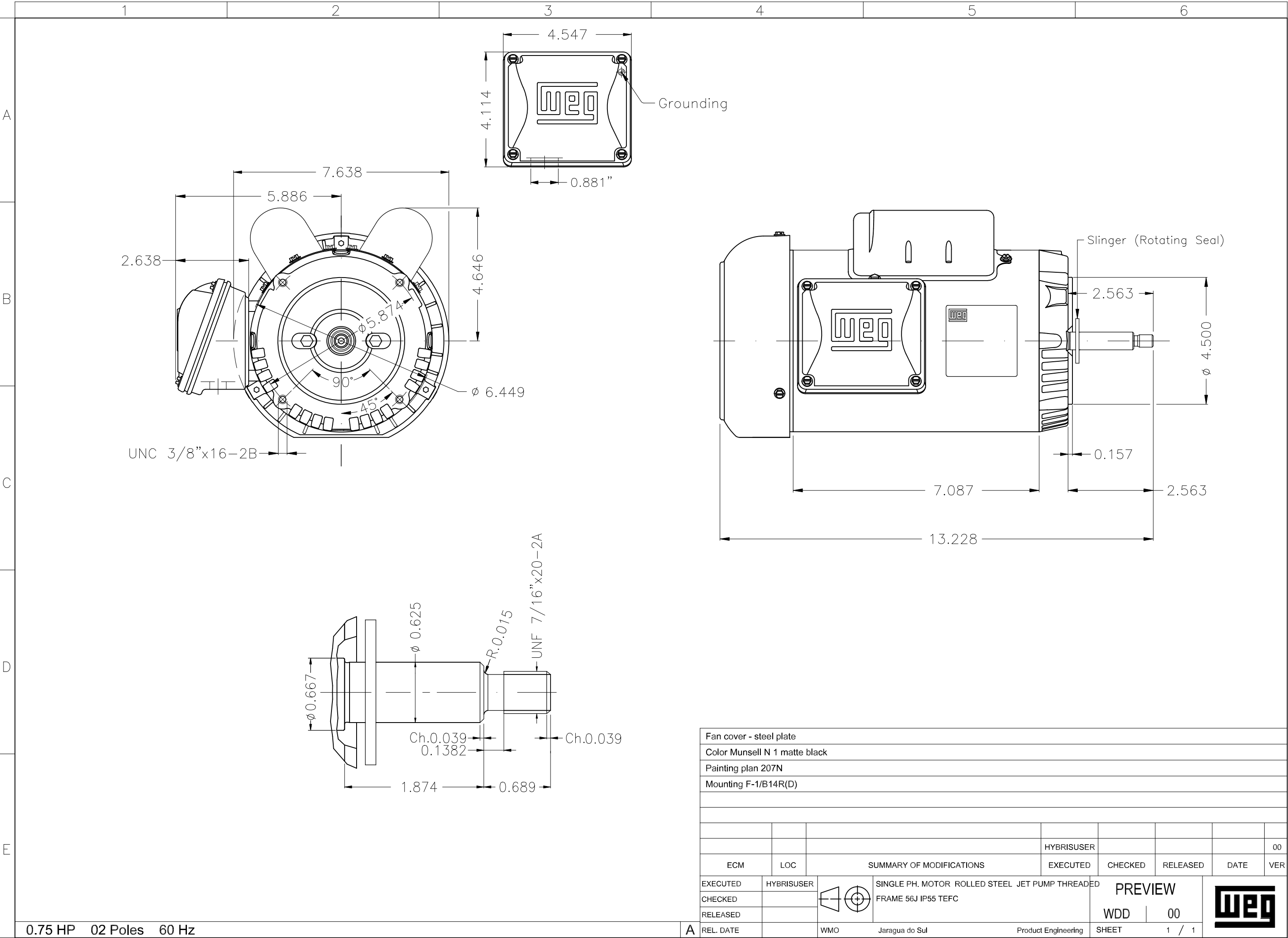


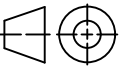

Performance : 115/208-230 V 60 Hz 2P

Rated current : 8.00/4.42-4.00 A  
 LRC : 8.0  
 Rated torque : 0.156 kgfm  
 Locked rotor torque : 280 %  
 Breakdown torque : 290 %  
 Rated speed : 3500 rpm

Moment of inertia (J) : 0.0017 kgm<sup>2</sup>  
 Duty cycle : Cont.(S1)  
 Insulation class : F  
 Service factor :  
 Temperature rise : 80 K  
 Design : N

Rev.	Changes Summary		Performed	Checked	Date
Performed by				Page	Revision
Checked by				2 / 2	
Date					



Fan cover - steel plate									
Color Munsell N 1 matte black									
Painting plan 207N									
Mounting F-1/B14R(D)									
				HYBRISUSER					00
ECM	LOC	SUMMARY OF MODIFICATIONS			EXECUTED	CHECKED	RELEASED	DATE	VER
EXECUTED	HYBRISUSER		SINGLE PH. MOTOR ROLLED STEEL JET PUMP THREADED			PREVIEW			
CHECKED			FRAME 56J IP55 TEFC						
RELEASED									
REL. DATE			WMO Jaragua do Sul Product Engineering			SHEET 1 / 1			