

DATA SHEET

Three Phase Induction Motor - Squirrel Cage



Customer	:			
Product line	: Three-Phase	Product code : 13896797		
Frame	: 56HC	Cooling method : IC01 - ODP		
Insulation class	: F	Mounting : F-1		
Duty cycle	: Cont.(S1)	Rotation ¹ : Both (CW and CCW)		
Ambient temperature	: -20°C to +40°C	Starting method : Direct On Line		
Altitude	: 1000 m.a.s.l.	Approx. weight ³ : 17.3 kg		
Design	: A	Moment of inertia (J) : 0.0049 kgm ²		
Output [HP]		2		
Poles		4		
Frequency [Hz]		60		
Rated voltage [V]		575		
Rated current [A]		2.15		
L. R. Amperes [A]		16.6		
LRC [A]		7.7x(Code K)		
No load current [A]		1.10		
Rated speed [RPM]		1740		
Slip [%]		3.33		
Rated torque [kgfm]		0.834		
Locked rotor torque [%]		260		
Breakdown torque [%]		320		
Service factor		1.15		
Temperature rise		80 K		
Locked rotor time		30s (cold) 17s (hot)		
Noise level ²		52.0 dB(A)		
Efficiency (%)	25%			
	50%	85.5		
	75%	86.5		
	100%	86.5		
Power Factor	25%			
	50%	0.61		
	75%	0.74		
	100%	0.81		
Bearing type	: <u>Drive end</u> 6204 ZZ <u>Non drive end</u> 6202 ZZ	Foundation loads		
Sealing	: Without Bearing Seal Without Bearing Seal	Max. traction : 77 kgf		
Lubrication interval	: - -	Max. compression : 94 kgf		
Lubricant amount	: - -			
Lubricant type	: Mobil Polyrex EM			
Notes				
<p>This revision replaces and cancel the previous one, which must be eliminated.</p> <p>(1) Looking the motor from the shaft end.</p> <p>(2) Measured at 1m and with tolerance of +3dB(A).</p> <p>(3) Approximate weight subject to changes after manufacturing process.</p> <p>(4) At 100% of full load.</p>		<p>These are average values based on tests with sinusoidal power supply, subject to the tolerances stipulated in NEMA MG-1.</p>		
Rev.	Changes Summary	Performed	Checked	Date
Performed by				
Checked by			Page	Revision
Date	11/05/2022		1 / 2	

LOAD PERFORMANCE CURVE

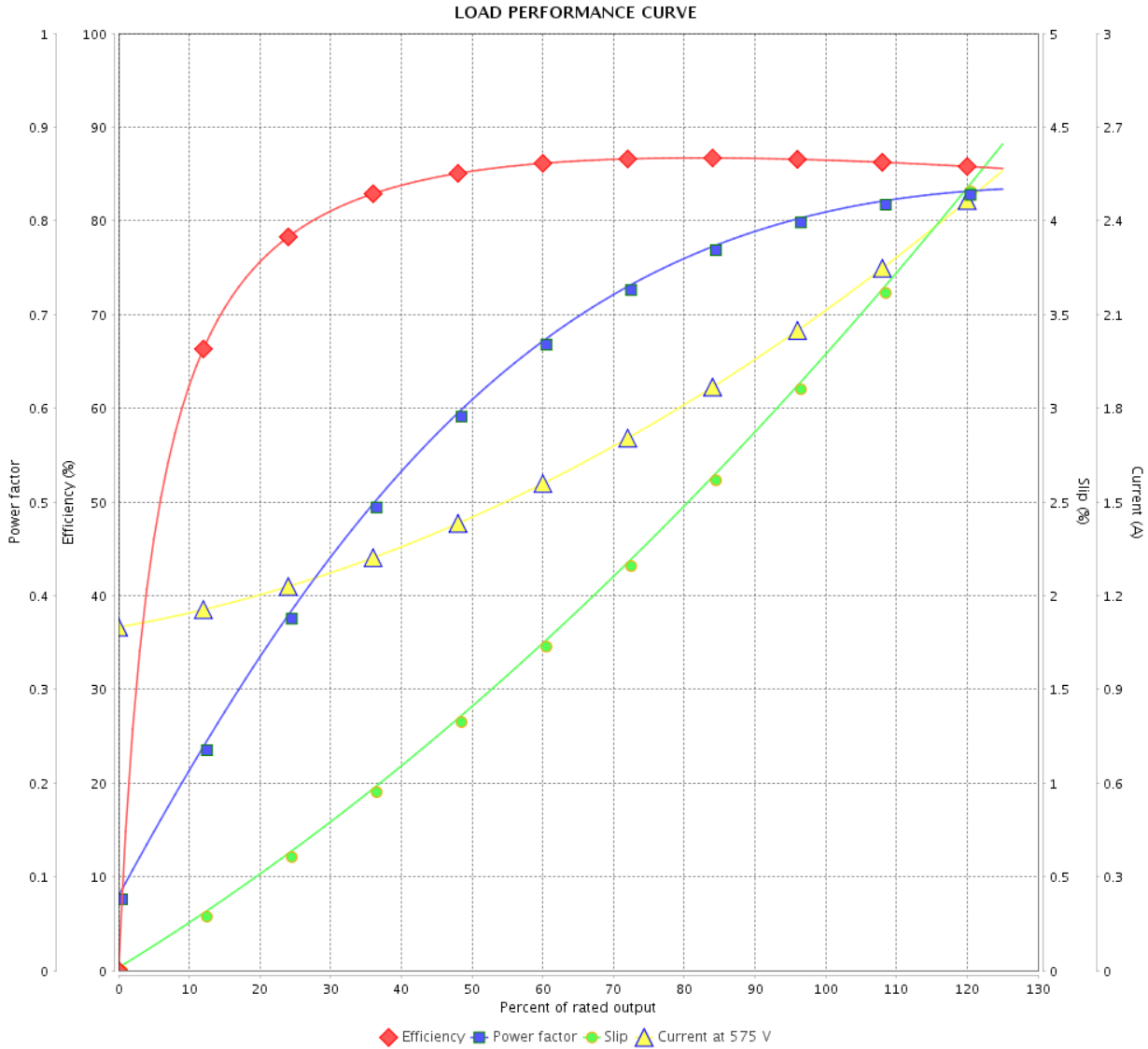
Three Phase Induction Motor - Squirrel Cage



Customer : _____

Product line : Three-Phase

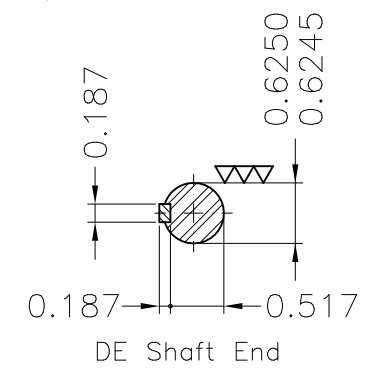
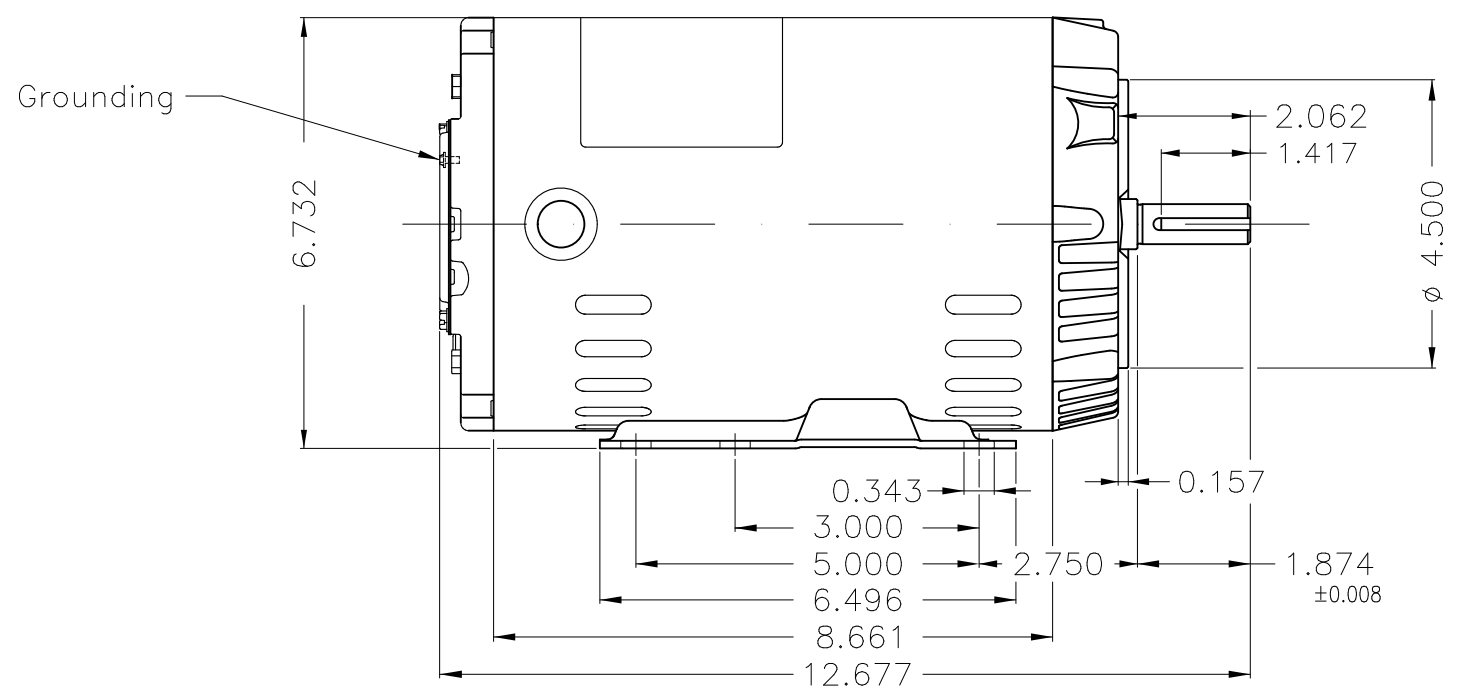
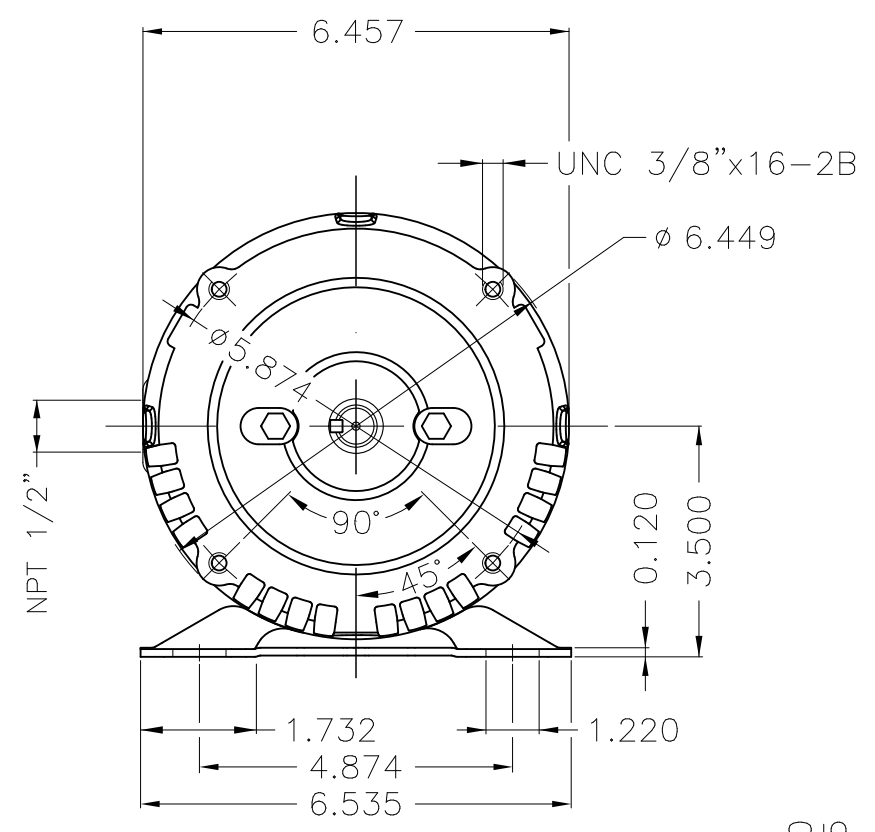
Product code : 13896797



Performance : 575 V 60 Hz 4P

Rated current	: 2.15 A	Moment of inertia (J)	: 0.0049 kgm ²
LRC	: 7.7	Duty cycle	: Cont.(S1)
Rated torque	: 0.834 kgfm	Insulation class	: F
Locked rotor torque	: 260 %	Service factor	: 1.15
Breakdown torque	: 320 %	Temperature rise	: 80 K
Rated speed	: 1740 rpm	Design	: A

Rev.	Changes Summary	Performed	Checked	Date
Performed by			Page 2 / 2	Revision
Checked by				
Date	11/05/2022			



Color Munsell N 1 matte black									
Painting plan 207N									
Mounting F-1/B34R(D)									
					HYBRISUSER	00			
ECM	LOC	SUMMARY OF MODIFICATIONS			EXECUTED	CHECKED	RELEASED	DATE	VER
EXECUTED	HYBRISUSER	THREE PH. MOTOR ROLLED STEEL PREM. EFF.			PREVIEW				
CHECKED		FRAME 56HC IP21 ODP			WDD		00		
RELEASED					SHEET		1 / 1		
REL. DATE		WMO	Jaragua do Sul	Product Engineering					

2 HP 04 Poles 60 Hz

Dimensions in inches XME A3