

DATA SHEET

Three Phase Induction Motor - Squirrel Cage



Customer : V.J. PAMENSKY CANADA INC.

Product line : W01 - TEFC - Nema Premium Efficiency JM Derating Product code : 12969542

Frame	: 213/5JM	Cooling method	: IC411 - TEFC
Insulation class	: F	Mounting	: F-1/B34R(D)
Duty cycle	: S1	Rotation ¹	: Both
Ambient temperature	: -20 °C to +40 °C	Starting method	: Direct On Line
Altitude	: 3280 ft	Approx. weight ³	: 131 lb
Protection degree	: IP55	Moment of inertia (J)	: 0.8899 sq.ft.lb
Design	: B		

	7.5 HP (5.5 kW)	5.5 HP (4 kW)	5.5 HP (4 kW)
Output	7.5 HP (5.5 kW)	5.5 HP (4 kW)	5.5 HP (4 kW)
Poles	4	4	4
Frequency	60 Hz	50 Hz	50 Hz
Rated voltage	230/460 V	190/380 V	220/415 V
Rated current	17.9/8.96 A	16.7/8.37 A	15.1/7.98 A
L. R. Amperes	129/64.5 A	134/67.0 A	138/73.4 A
LRC	7.2	8.0	9.2
No load current	8.20/4.10 A	8.20/4.10 A	8.87/4.70 A
Rated speed	1770 rpm	1475 rpm	1480 rpm
Slip	1.67 %	1.67 %	1.33 %
Rated torque	21.9 ft.lb	19.3 ft.lb	19.2 ft.lb
Locked rotor torque	230 %	230 %	260 %
Pull up torque	230 %	170 %	215 %
Breakdown torque	300 %	330 %	370 %
Service factor	1.15	1.00	1.00
Temperature rise	80 K	80 K	80 K
Noise level ²	60.0 dB(A)	57.0 dB(A)	57.0 dB(A)
Locked rotor time (hot)	18 s	16 s	14 s
Locked rotor time (cold)	32 s	29 s	25 s
Efficiency (%)	50%	90.2	89.5
	75%	91.0	90.0
	100%	91.7	88.6
Power Factor	50%	0.68	0.64
	75%	0.78	0.76
	100%	0.84	0.82

Losses at normative operating points (speed;torque), in percentage of rated output power

Losses (%)		8.8	12.4	11.5
Losses (%)	P1(0,9;1,0)	8.8	12.4	11.5
	P2(0,5;1,0)	7.4	10.5	9.7
	P3(0,25;1,0)	6.9	9.8	9.0
	P4(0,9;0,5)	4.5	6.4	5.9
	P5(0,5;0,5)	3.1	4.4	4.1
	P6(0,5;0,25)	2.1	3.1	2.8
	P7(0,25;0,25)	1.6	2.2	2.0

Bearing type	Drive end	6209-ZZ	Non drive end	6206-ZZ	Foundation loads	Max. traction	:
	Lubrication interval	-	-	-		Max. compression	:
Lubricant amount	-	-	-	-	Load type	:-	
Lubricant type	MOBIL POLYREX EM				Load torque	:-	
					Load inertia (J=GD ² /4)	:-	

Notes
See notes on page 2.

Rev.	Changes Summary		Rev.	Checked	Date
Performed by	farazq			1865161014	
Checked by	AUTOMATICO			Page	Rev.
Date	24/06/2026			1 / 2	0

DATA SHEET

Three Phase Induction Motor - Squirrel Cage



Customer : V.J. PAMENSKY CANADA INC.

Product line : W01 - TEFC - Nema Premium Efficiency JM Derating
 Product code : 12969542

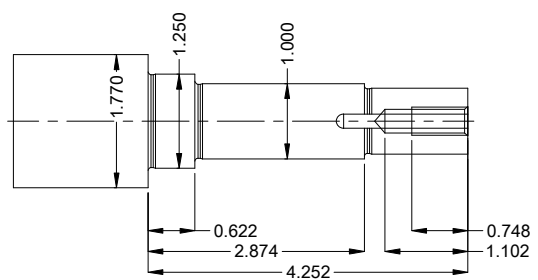
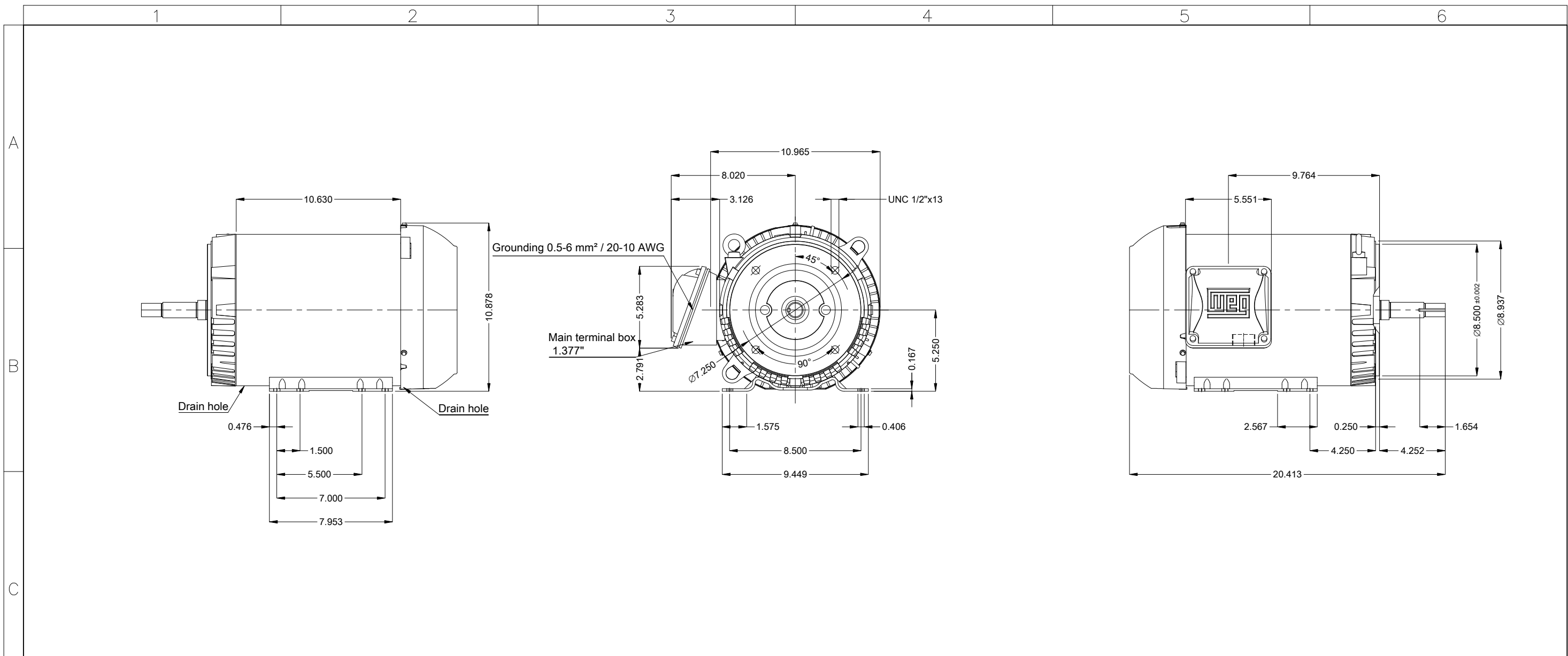
Thermal protection ID	Application	Type	Quantity	Sensing Temperature
-----------------------	-------------	------	----------	---------------------

Notes
 USABLE @208V 20.1A SF 1.15 SFA 23.1A

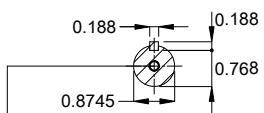
Standards	Specification : MG1 - Part 10	Vibration : MG1 - Part 7
	Test : MG1 - Part 12	Tolerance : MG1 - Part 12
	Noise : MG1 - Part 9	

This revision replaces and cancel the previous one, which must be eliminated. (1) Looking the motor from the shaft end. (2) Measured at 1m and with tolerance of +3dB(A). (3) Approximate weight, subject to be changed after manufacturing process.	These are average values based on tests with sinusoidal power supply, subject to the tolerances stipulated in NEMA MG 1-12.
---	---

Rev.	Changes Summary	Rev.	Checked	Date
Performed by	farazq	1865161014		
Checked by	AUTOMATICO	Page	Rev.	
Date	24/06/2026	2 / 2	0	



DE Shaft End



EUNC 3/8"-16 WEG WPR-7309

- Internal AEGIS ground ring on the DE
- Color Munsell N 1 matte black
- Painting plan 207N
- Mounting MARKET F-1/B34R(D)
- Mounting B34D

7.5 HP 04 Poles 60 Hz A

Scale 2 : 13

						HYBRISUSER				00	
ECM	LOC	SUMMARY OF MODIFICATIONS				EXECUTED	CHECKED	RELEASED	DATE	VER	
EXECUTED	HYBRISUSER			THREE PH. MOTOR ROLLED STEEL JM NEMA PREM. EFF.		PREVIEW WDD 00				SHEET 1 / 1	
CHECKED				FRAME 213/5JM IP55 TEFC							
RELEASED											
REL. DATE											