

DATA SHEET

Single Phase Induction Motor - Squirrel Cage



Customer :

Product line : Explosion Proof Single-Phase Product code : 11359859

Frame	: A56EX	Locked rotor time	: 10s (cold) 6s (hot)
Output	: 0.33 HP (0.25 kW)	Temperature rise	: 80 K
Poles	: 4	Duty cycle	: Cont.(S1)
Frequency	: 60 Hz	Ambient temperature	: -20°C to +40°C
Rated voltage	: 115/208-230 V	Altitude	: 1000 m.a.s.l.
Rated current	: 6.50/3.00-3.25 A	Protection degree	: IP44
L. R. Amperes	: 35.1/16.2-17.6 A	Cooling method	: IC411 - TEFC
LRC	: 5.4x(Code N)	Mounting	: F-1
No load current	: 5.95/2.56-2.98 A	Rotation ¹	: Both (CW and CCW)
Rated speed	: 1755 rpm	Starting method	: Direct On Line
Slip	: 2.50 %	Approx. weight ³	: 15.0 kg
Rated torque	: 0.136 kgfm		
Locked rotor torque	: 310 %		
Breakdown torque	: 290 %		
Insulation class	: B		
Service factor	: 1.15		
Moment of inertia (J)	: 0.0034 kgm ²		

Output	50%	75%	100%	Foundation loads	
Efficiency (%)	46.5	55.2	60.2	Max. traction	: 5 kgf
Power Factor	0.39	0.48	0.54	Max. compression	: 20 kgf

		<u>Drive end</u>	<u>Non drive end</u>
Bearing type	:	6203 ZZ	6203 ZZ
Sealing	:	Without Bearing Seal	Without Bearing Seal
Lubrication interval	:	-	-
Lubricant amount	:	-	-
Lubricant type	:	Mobil Polyrex EM	

Notes

This revision replaces and cancel the previous one, which must be eliminated.

- (1) Looking the motor from the shaft end.
- (2) Measured at 1m and with tolerance of +3dB(A).
- (3) Approximate weight subject to changes after manufacturing process.
- (4) At 100% of full load.

These are average values based on tests with sinusoidal power supply, subject to the tolerances stipulated in NEMA MG-1.

Rev.	Changes Summary	Performed	Checked	Date
Performed by		Page 1 / 2 Revision		
Checked by				
Date	26/10/2024			

LOAD PERFORMANCE CURVE

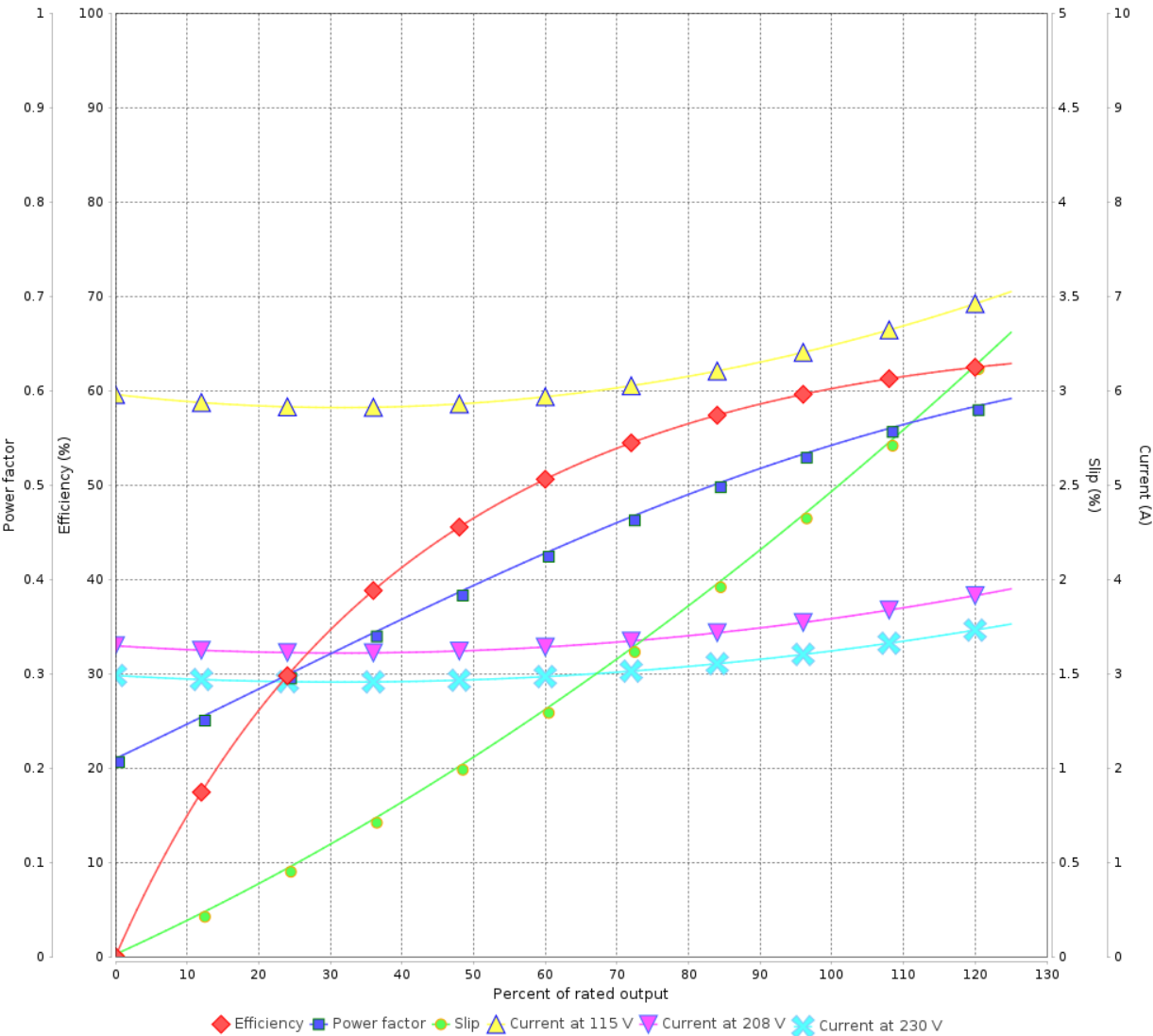
Single Phase Induction Motor - Squirrel Cage



Customer :

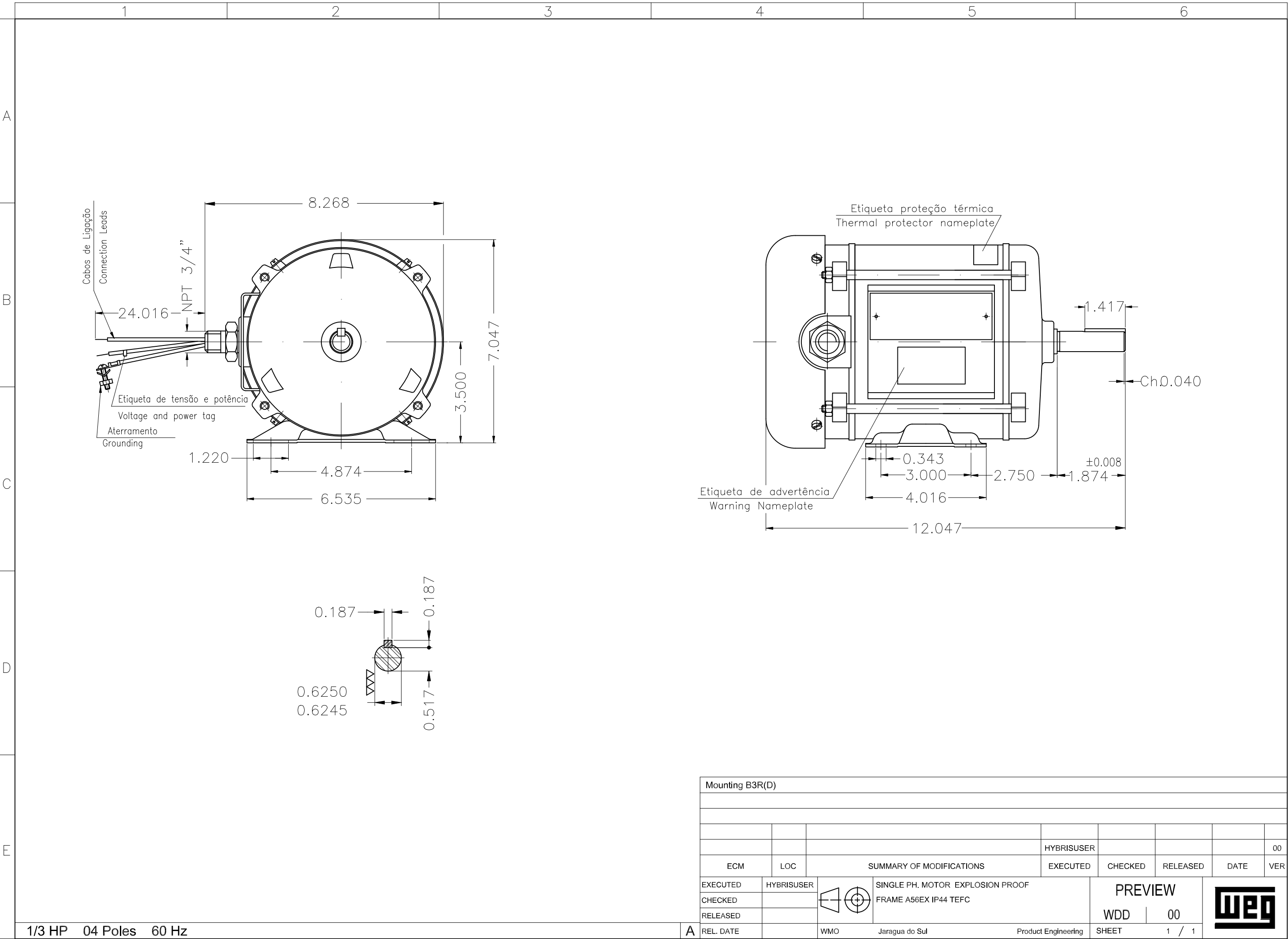
Product line : Explosion Proof Single-Phase Product code : 11359859

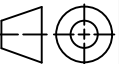

LOAD PERFORMANCE CURVE



Performance : 115/208-230 V 60 Hz 4P			
Rated current	: 6.50/3.00-3.25 A	Moment of inertia (J)	: 0.0034 kgm²
LRC	: 5.4	Duty cycle	: Cont.(S1)
Rated torque	: 0.136 kgfm	Insulation class	: B
Locked rotor torque	: 310 %	Service factor	:
Breakdown torque	: 290 %	Temperature rise	: 80 K
Rated speed	: 1755 rpm		

Rev.	Changes Summary		Performed	Checked	Date
Performed by				Page 2 / 2	Revision
Checked by					
Date	26/10/2024				



Mounting B3R(D)									
				HYBRISUSER					00
ECM	LOC	SUMMARY OF MODIFICATIONS			EXECUTED	CHECKED	RELEASED	DATE	VER
EXECUTED	HYBRISUSER		SINGLE PH. MOTOR EXPLOSION PROOF FRAME A56EX IP44 TEFC			PREVIEW WDD 00			
CHECKED									
RELEASED									
REL. DATE									
		WMO	Jaragua do Sul	Product Engineering	SHEET	1 / 1			