

# DATA SHEET

## Three Phase Induction Motor - Squirrel Cage



Customer :

Product line : Explosion Proof Standard Efficiency Three-Phase Product code : 10674682

Frame	: B56CEX	Locked rotor time	: 27s (cold) 15s (hot)
Output	: 0.75 HP (0.550 kW)	Temperature rise	: 80 K
Poles	: 4	Duty cycle	: Cont.(S1)
Frequency	: 60 Hz	Ambient temperature	: -20°C to +40°C
Rated voltage	: 575 V	Altitude	: 1000 m.a.s.l.
Rated current	: 0.928 A	Protection degree	: IP44
L. R. Amperes	: 5.29 A	Cooling method	: IC411 - TEFC
LRC	: 5.7x(Code H)	Mounting	: F-1
No load current	: 0.560 A	Rotation <sup>1</sup>	: Both (CW and CCW)
Rated speed	: 1730 rpm	Noise level <sup>2</sup>	: 50.0 dB(A)
Slip	: 3.89 %	Starting method	: Direct On Line
Rated torque	: 0.315 kgfm	Approx. weight <sup>3</sup>	: 17.4 kg
Locked rotor torque	: 240 %		
Breakdown torque	: 280 %		
Insulation class	: B		
Service factor	: 1.15		
Moment of inertia (J)	: 0.0041 kgm <sup>2</sup>		

Output	50%	75%	100%	Foundation loads	
Efficiency (%)	77.0	80.0	81.5	Max. traction	: 19 kgf
Power Factor	0.53	0.66	0.74	Max. compression	: 37 kgf

		<u>Drive end</u>	<u>Non drive end</u>
Bearing type	:	6203 ZZ	6203 ZZ
Sealing	:	Without Bearing Seal	Without Bearing Seal
Lubrication interval	:	-	-
Lubricant amount	:	-	-
Lubricant type	:	Mobil Polyrex EM	

### Notes

This revision replaces and cancel the previous one, which must be eliminated.

- (1) Looking the motor from the shaft end.
- (2) Measured at 1m and with tolerance of +3dB(A).
- (3) Approximate weight subject to changes after manufacturing process.
- (4) At 100% of full load.

These are average values based on tests with sinusoidal power supply, subject to the tolerances stipulated in NEMA MG-1.

Rev.	Changes Summary	Performed	Checked	Date
Performed by		Page 1 / 3 Revision		
Checked by				
Date	26/10/2024			

Customer :

Thermal protection

ID	Application	Type	Quantity	Sensing Temperature
1	Winding	Thermostat - 2 wires	1 x Phase	130 °C

Rev.	Changes Summary		Performed	Checked	Date
Performed by				Page	Revision
Checked by				2 / 3	
Date	26/10/2024				

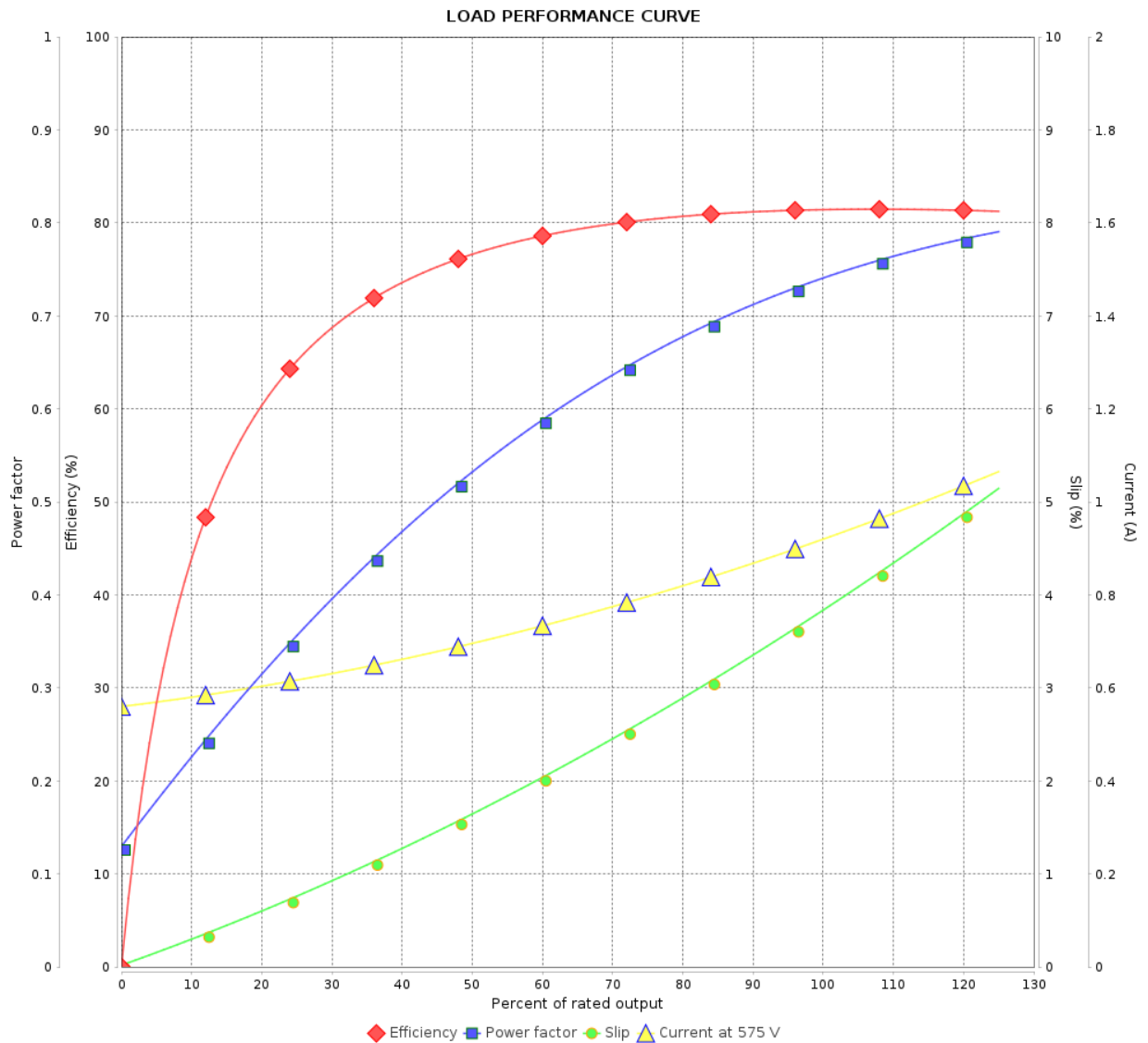
# LOAD PERFORMANCE CURVE

## Three Phase Induction Motor - Squirrel Cage



Customer :

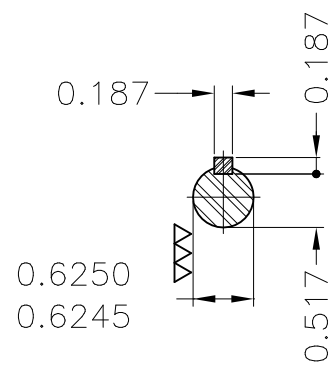
Product line : Explosion Proof Standard Efficiency Three-Phase      Product code : 10674682

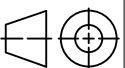



Performance : 575 V 60 Hz 4P

Rated current	: 0.928 A	Moment of inertia (J)	: 0.0041 kgm <sup>2</sup>
LRC	: 5.7	Duty cycle	: Cont.(S1)
Rated torque	: 0.315 kgfm	Insulation class	: B
Locked rotor torque	: 240 %	Service factor	: 1.15
Breakdown torque	: 280 %	Temperature rise	: 80 K
Rated speed	: 1730 rpm		

Rev.	Changes Summary	Performed	Checked	Date
Performed by				
Checked by				
Date	26/10/2024		Page 3 / 3	Revision



Bearing cap									
Mounting B34R(D)									
				HYBRISUSER					00
ECM	LOC	SUMMARY OF MODIFICATIONS			EXECUTED	CHECKED	RELEASED	DATE	VER
EXECUTED	HYBRISUSER		THREE PH. MOTOR EXPLOSION PROOF FRAME B56CEX IP44 TEFC			PREVIEW WDD   00			
CHECKED									
RELEASED									
REL. DATE		WMO	Jaragua do Sul	Product Engineering	SHEET	1 / 1			