

DATA SHEET

Three Phase Induction Motor - Squirrel Cage



Customer :

Product line : Explosion Proof Standard Efficiency Three-Phase Product code : 10687989

Frame	: B56CEX	Locked rotor time	: 27s (cold) 15s (hot)
Output	: 0.75 HP (0.550 kW)	Temperature rise	: 80 K
Poles	: 4	Duty cycle	: Cont.(S1)
Frequency	: 60 Hz	Ambient temperature	: -20°C to +40°C
Rated voltage	: 208-230/460 V	Altitude	: 1000 m.a.s.l.
Rated current	: 2.57-2.32/1.16 A	Protection degree	: IP44
L. R. Amperes	: 14.6-13.2/6.61 A	Cooling method	: IC411 - TEFC
LRC	: 5.7x(Code H)	Mounting	: F-1
No load current	: 1.55-1.40/0.700 A	Rotation ¹	: Both (CW and CCW)
Rated speed	: 1730 rpm	Noise level ²	: 50.0 dB(A)
Slip	: 3.89 %	Starting method	: Direct On Line
Rated torque	: 0.315 kgfm	Approx. weight ³	: 17.5 kg
Locked rotor torque	: 240 %		
Breakdown torque	: 280 %		
Insulation class	: B		
Service factor	: 1.15		
Moment of inertia (J)	: 0.0041 kgm ²		

Output	50%	75%	100%	Foundation loads	
Efficiency (%)	77.0	80.0	81.5	Max. traction	: 19 kgf
Power Factor	0.53	0.66	0.74	Max. compression	: 37 kgf

	Drive end	Non drive end
Bearing type	: 6203 ZZ	: 6203 ZZ
Sealing	: Without Bearing Seal	: Without Bearing Seal
Lubrication interval	: -	: -
Lubricant amount	: -	: -
Lubricant type	: Mobil Polyrex EM	

Notes
USABLE @208V SF 1.00

This revision replaces and cancel the previous one, which must be eliminated.

- (1) Looking the motor from the shaft end.
- (2) Measured at 1m and with tolerance of +3dB(A).
- (3) Approximate weight subject to changes after manufacturing process.
- (4) At 100% of full load.

These are average values based on tests with sinusoidal power supply, subject to the tolerances stipulated in NEMA MG-1.

Rev.	Changes Summary	Performed	Checked	Date
Performed by		Page 1 / 3 Revision		
Checked by				
Date	26/10/2024			

DATA SHEET

Three Phase Induction Motor - Squirrel Cage



Customer :

Thermal protection

ID	Application	Type	Quantity	Sensing Temperature
1	Winding	Thermostat - 2 wires	1 x Phase	130 °C

Rev.	Changes Summary		Performed	Checked	Date
Performed by				Page 2 / 3Revision	
Checked by					
Date	26/10/2024				

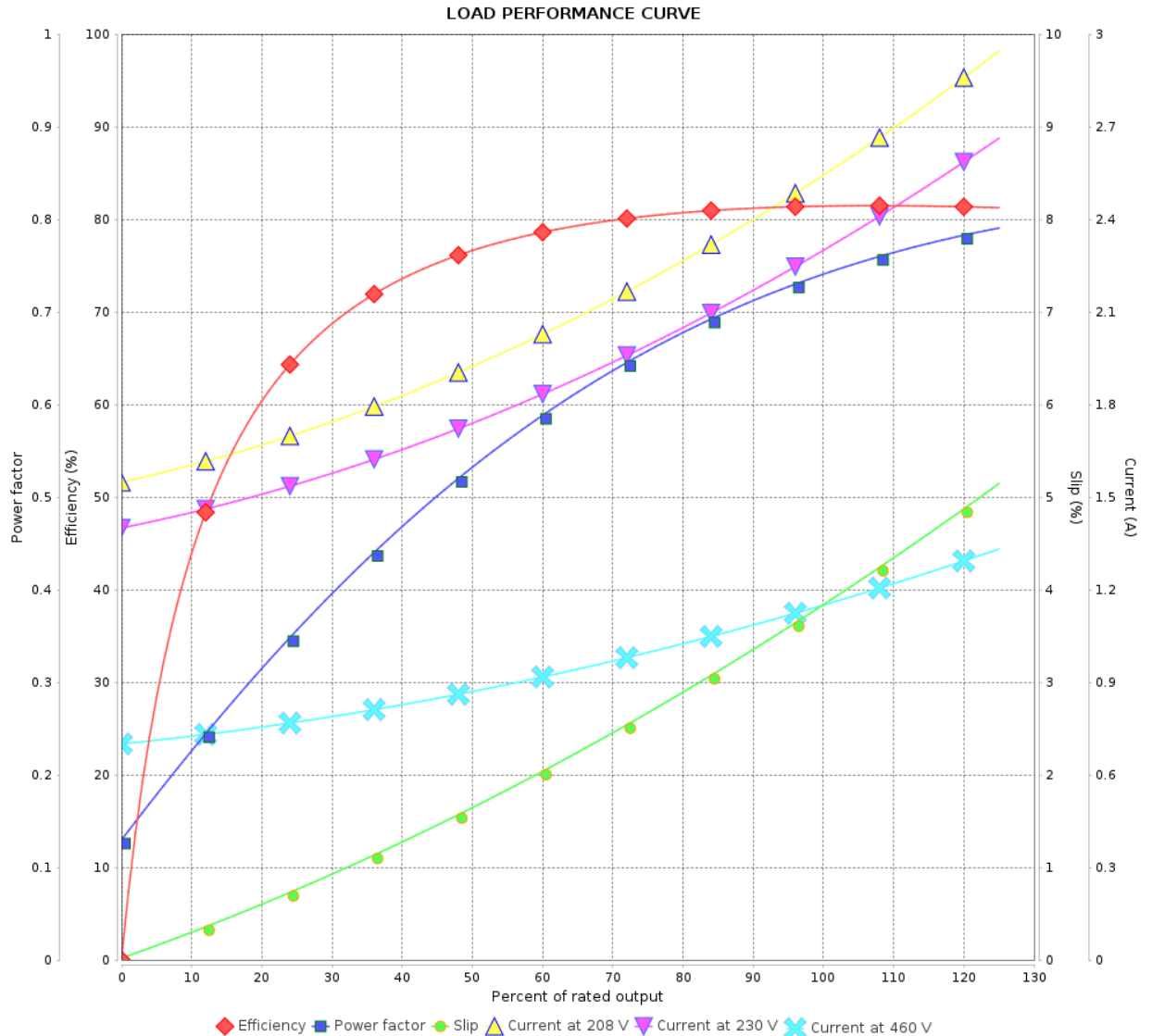
LOAD PERFORMANCE CURVE

Three Phase Induction Motor - Squirrel Cage



Customer :

Product line : Explosion Proof Standard Efficiency Three-Phase Product code : 10687989

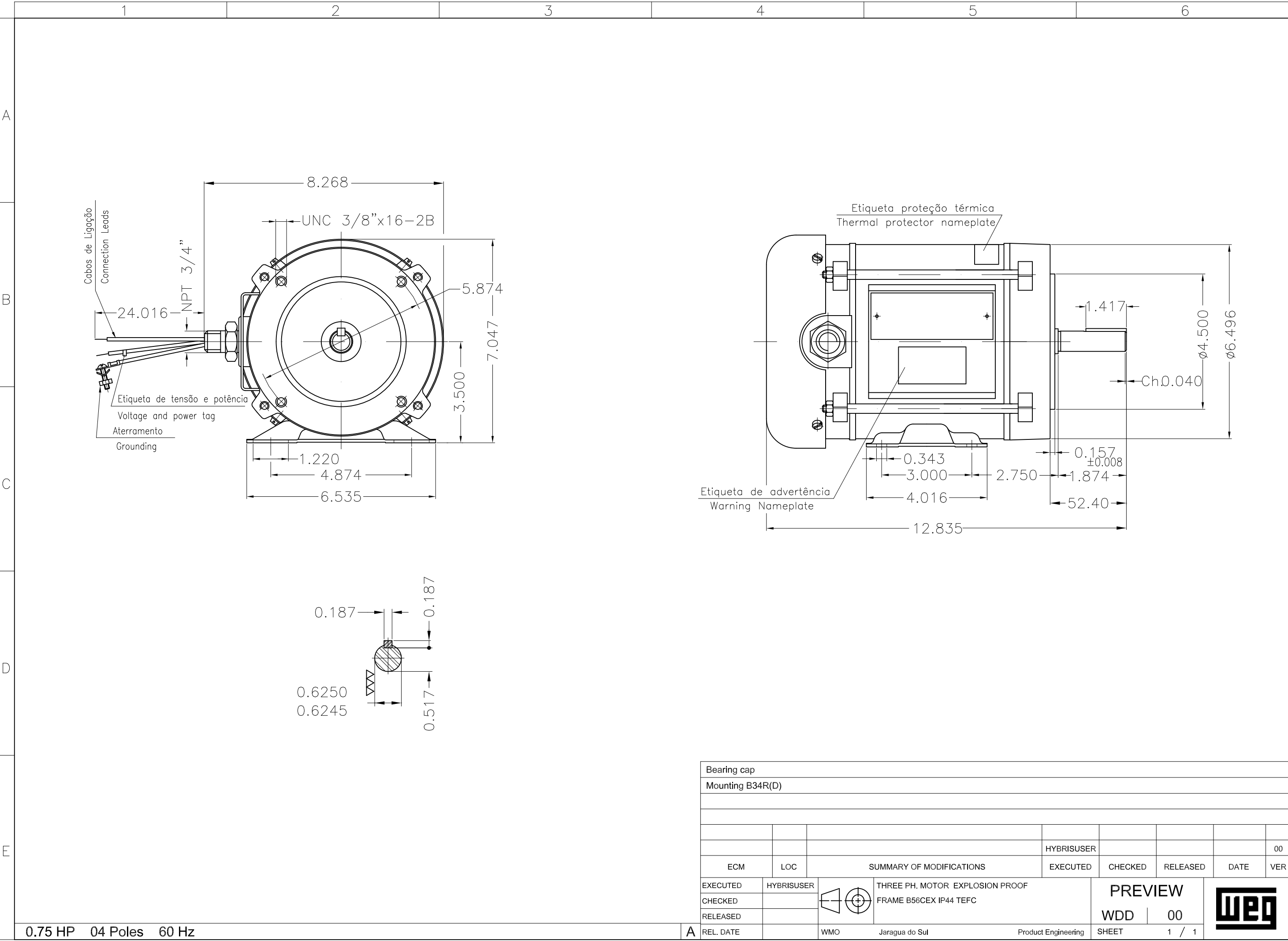


Performance : 208-230/460 V 60 Hz 4P

Rated current : 2.57-2.32/1.16 A
LRC : 5.7
Rated torque : 0.315 kgfm
Locked rotor torque : 240 %
Breakdown torque : 280 %
Rated speed : 1730 rpm

Moment of inertia (J) : 0.0041 kgm²
Duty cycle : Cont.(S1)
Insulation class : B
Service factor :
Temperature rise : 80 K

Rev.	Changes Summary		Performed	Checked	Date
Performed by				Page 3 / 3Revision	
Checked by					
Date	26/10/2024				



Bearing cap									
Mounting B34R(D)									
</									