

DATA SHEET

Single Phase Induction Motor - Squirrel Cage



Customer : V.J. PAMENSKY CANADA INC.

Product line : W01 - ODP - Ventilação Premium Efficiency (DOE) Product code : 19074592

Frame	: 56H	Locked rotor time	: 18 s (hot) 32 s (cold)
Output	: 2 HP (1.5 kW)	Temperature rise	: 80 K
Poles	: 4	Duty cycle	: S1
Frequency	: 60 Hz	Ambient temperature	: -20 °C to +40 °C
Rated voltage	: 115/208-230 V	Altitude	: 3280 ft
Rated current	: 17.7/9.50-8.87 A	Protection degree	: IP21
L. R. Amperes	: 115/61.7-57.7 A	Cooling method	: IC01 - ODP
LRC	: 6.5	Mounting	: F-1/B3R(D)
No load current	: 6.20/2.67-3.10 A	Rotation ¹	: Both
Rated speed	: 1730 rpm	Noise level ²	: 52.0 dB(A)
Slip	: 3.89 %	Vibration class	: A
Rated torque	: 5.99 ft.lb	Starting method	: Direct On Line
Locked rotor torque	: 290 %	Approx. weight ³	: 45.2 lb
Pull up torque	: 245 %	Color	: PRIMER ONLY
Breakdown torque	: 225 %	Design	: L
Insulation class	: F		
Service factor	: 1.15		
Moment of inertia (J)	: 0.1614 sq.ft.lb		

Output	50%	75%	100%	Load type	: -
Efficiency (%)	83.0	84.0	84.5	Load torque	: -
Power Factor	0.75	0.83	0.87	Load inertia (J=GD ² /4)	: -

Bearing type	Drive end	Non drive end	Foundation loads	
Lubrication interval	6204-ZZ	6202-ZZ	Max. traction	: -
Lubricant amount	-	-	Max. compression	: -
Lubricant type	MOBIL POLYREX EM			

Notes
See notes on page 2.

This revision replaces and cancel the previous one, which must be eliminated.
(1) Looking the motor from the shaft end.
(2) Measured at 1m and with tolerance of +3dB(A).
(3) Approximate weight, subject to be changed after manufacturing process.

These are average values based on tests with sinusoidal power supply, subject to the tolerances stipulated in NEMA MG 1-12.

Rev.	Changes Summary	Rev.	Checked	Date
Performed by	farazq	1848012516		
Checked by	AUTOMATICO	Page	Rev.	
Date	13/05/2026	1 / 2	0	

DATA SHEET

Single Phase Induction Motor - Squirrel Cage



Customer : V.J. PAMENSKY CANADA INC.

Product line : W01 - ODP - Ventilação Premium Efficiency (DOE) Product code : 19074592

Thermal protection ID	Application	Type	Quantity	Sensing Temperature
-----------------------	-------------	------	----------	---------------------

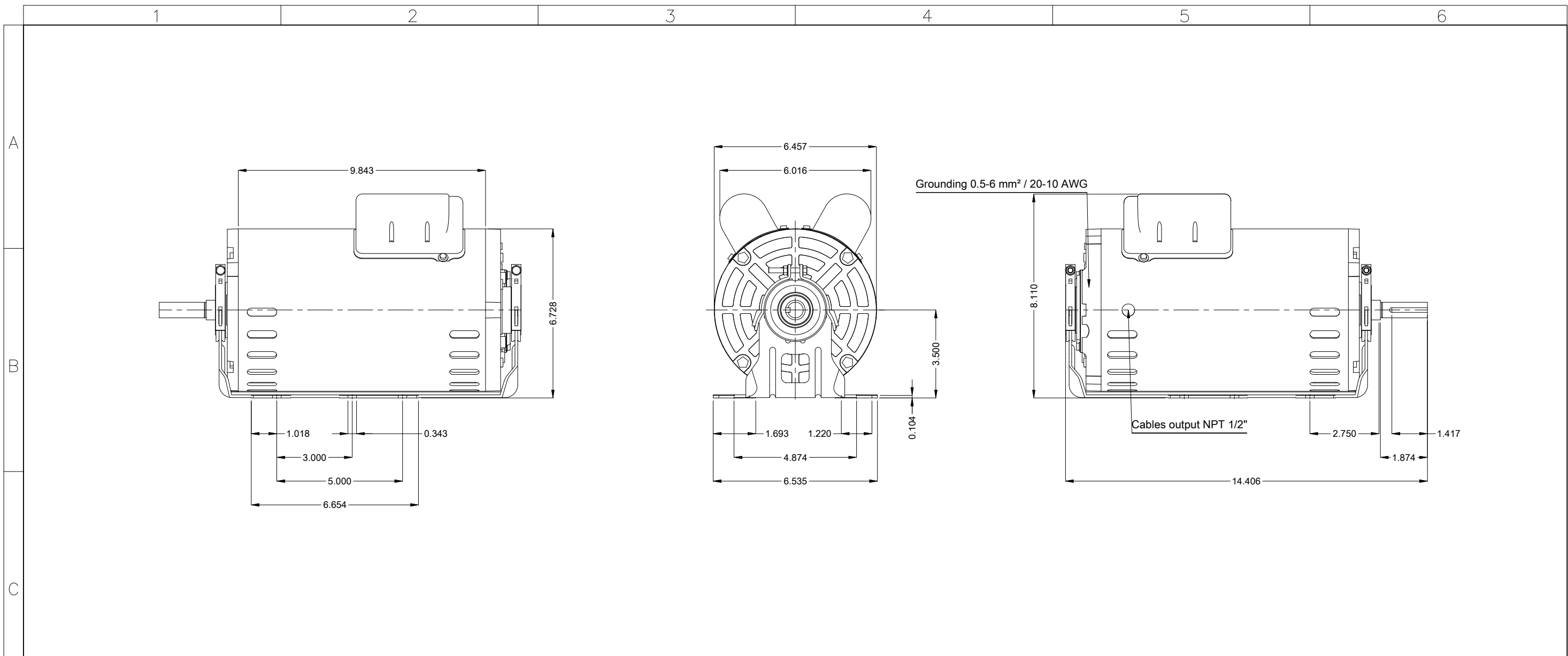
Notes

Standards	Specification	: MG1 - Part 10	Vibration	: MG1 - Part 7
	Test	: MG1 - Part 12	Tolerance	: MG1 - Part 12
	Noise	: MG1 - Part 9		

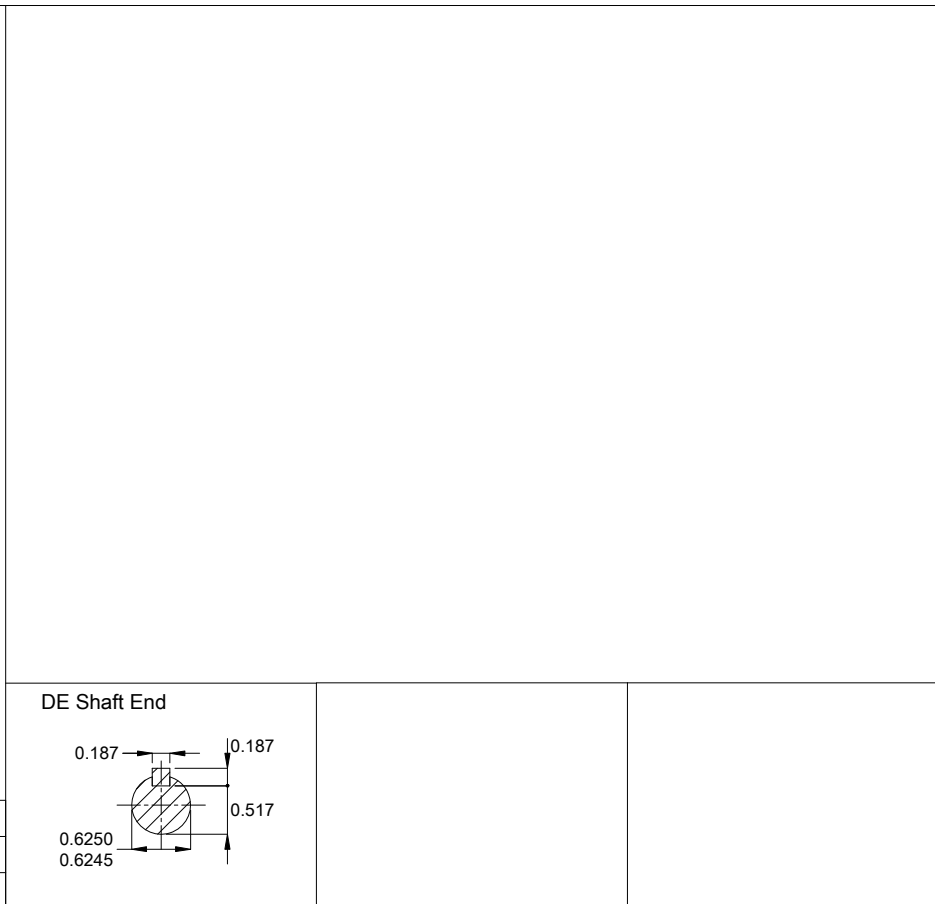
This revision replaces and cancel the previous one, which must be eliminated.
(1) Looking the motor from the shaft end.
(2) Measured at 1m and with tolerance of +3dB(A).
(3) Approximate weight, subject to be changed after manufacturing process.

These are average values based on tests with sinusoidal power supply, subject to the tolerances stipulated in NEMA MG 1-12.

Rev.	Changes Summary	Rev.	Checked	Date
Performed by	farazq	1848012516		
Checked by	AUTOMATICO	Page	Rev.	
Date	13/05/2026	2 / 2	0	



Phenolic thermal protector - automatic
Mounting MARKET F-1/B3R(D)
Mounting F-1/B3R(D)



2 HP 04 Poles 60 Hz										A	
Scale 1 : 4											
HYBRISUSER										00	
ECM	LOC	SUMMARY OF MODIFICATIONS					EXECUTED	CHECKED	RELEASED	DATE	VER
EXECUTED	HYBRISUSER	SINGLE PH. MOTOR ROLLED STEEL FAN / EXHAUST PREM. EFF. FRAME 56H IP21 ODP					PREVIEW				
CHECKED							WDD		00		
RELEASED							SHEET		1 / 1		
REL. DATE											

Dimensions in inches

A3

