

DATA SHEET



Single Phase Induction Motor - Squirrel Cage

Customer :					
Product line		: Rolled Steel Jet Pump - J type Single-Phase		Product code : 18120339	
Frame	: 56J	Locked rotor time	: 37s (cold) 21s (hot)		
Output	: 0.75 HP (0.55 kW)	Temperature rise	: 80 K		
Frequency	: 60 Hz	Duty cycle	: Cont.(S1)		
Rated voltage	: 115/208-230 V	Ambient temperature	: -20°C to +40°C		
Poles	: 2	Altitude	: 1000 m.a.s.l.		
Rated current	: 6.54/3.62-3.27 A	Protection degree	: IP55		
	: 8.3x(Code K)	Cooling method	: IC411 - TEFC		
Rated speed	: 3510 rpm	Mounting	: F-1		
Rated torque	: 0.155 kgfm	Rotation ¹	: CCW		
Insulation class	: F	Noise level ²	: 68.0 dB(A)		
Service factor	: 1.15	Starting method	: Direct On Line		
Moment of inertia (J)	: 0.0020 kgm ²	Approx. weight ³	: 13.0 kg		
Design	: N				
Output	25%	50%	75%	100%	
Efficiency (%)	0.000	64.0	72.0	77.0	
Power Factor	0.00	0.94	0.94	0.95	
Foundation loads					
Max. traction		: 8 kgf			
Max. compression		: 21 kgf			
		<u>Drive end</u>	<u>Non drive end</u>		
Bearing type	:	6203 2RS	6202 2RS		
Sealing	:	V'Ring	Without Bearing Seal		
Lubrication interval	:	0 h	0 h		
Lubricant amount	:	0 g	0 g		
Lubricant type	:	Mobil Polyrex EM			
Notes					
This revision replaces and cancel the previous one, which must be eliminated.					
(1) Looking the motor from the shaft end.					
(2) Measured at 1m and with tolerance of +3dB(A).					
(3) Approximate weight subject to changes after manufacturing process.					
(4) At 100% of full load.					
These are average values based on tests with sinusoidal power supply, subject to the tolerances stipulated in NEMA MG-1.					
Rev.	Changes Summary		Performed	Checked	Date
Performed by					
Checked by				Page	Revision
Date	19/05/2026			1 / 2	

LOAD PERFORMANCE CURVE

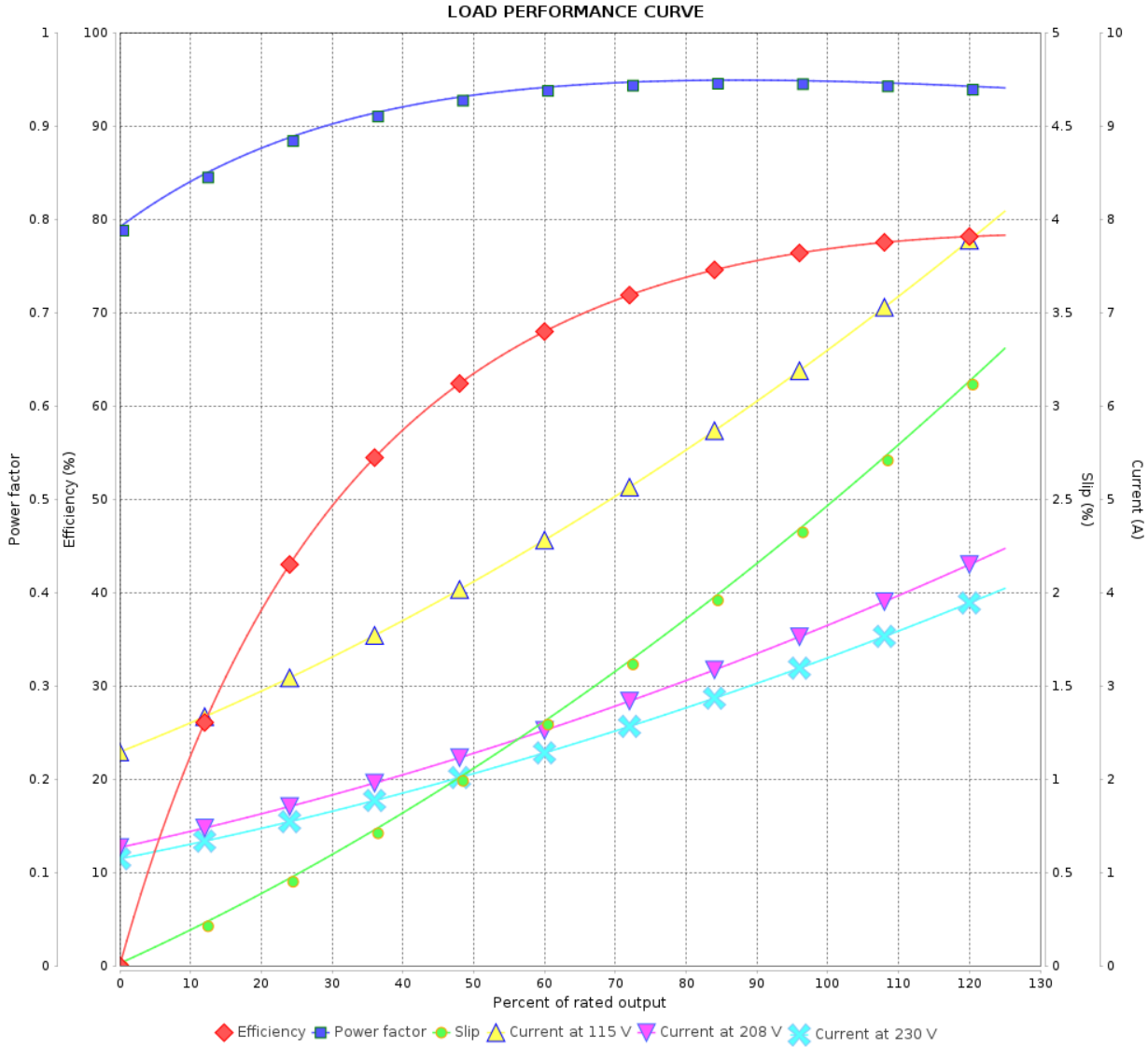
Single Phase Induction Motor - Squirrel Cage



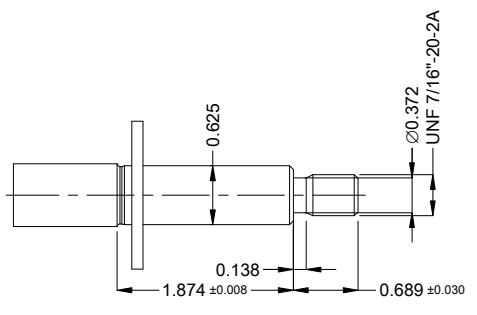
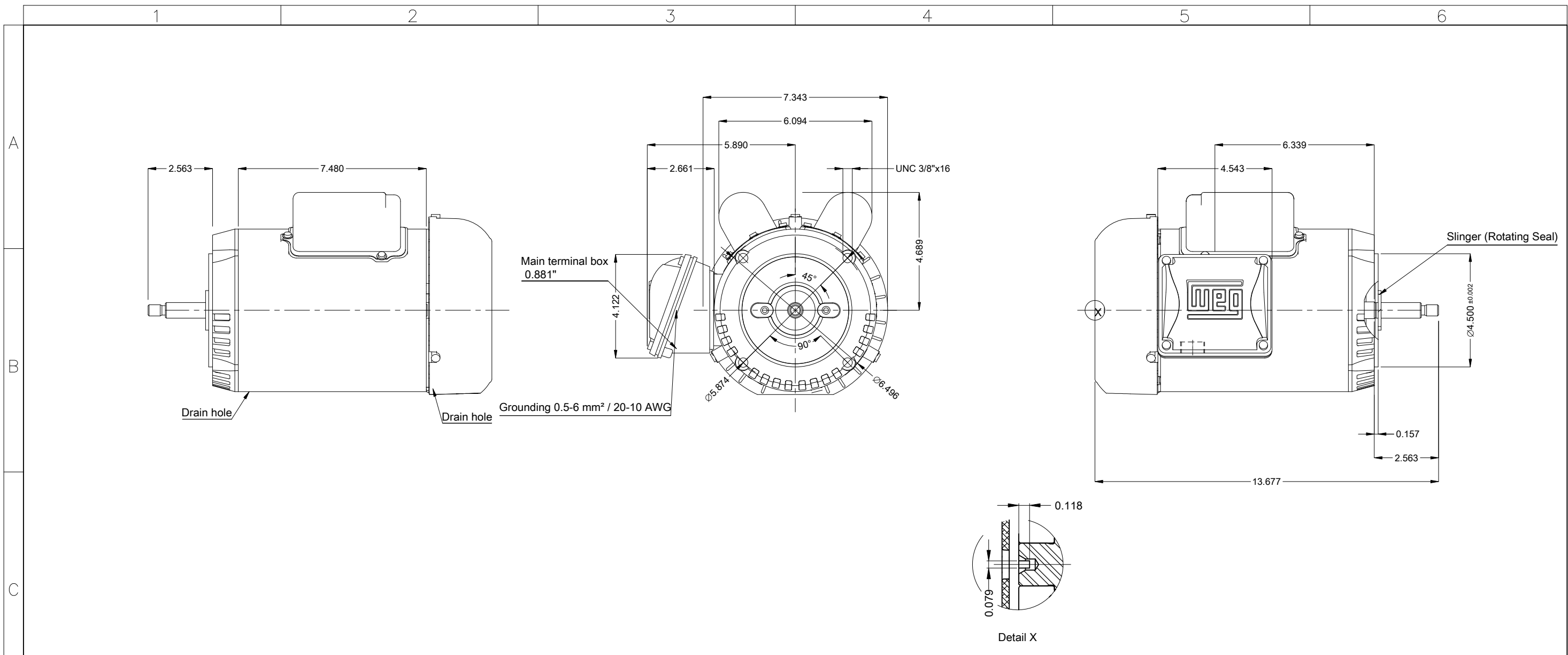
Customer :

Product line : Rolled Steel Jet Pump - J type
Single-Phase

Product code : 18120339



Rev.	Changes Summary	Performed	Checked	Date
Performed by			Page 2 / 2	Revision
Checked by				
Date				



Fan cover - steel plate
Color Munsell N 1 matte black
Painting plan 207N
Mounting MARKET F-1/B14R(D)
Mounting F-1/B14R(D)

ECM	LOC	SUMMARY OF MODIFICATIONS	EXECUTED	CHECKED	RELEASED	DATE	VER
EXECUTED	HYBRISUSER	SINGLE PH. MOTOR ROLLED STEEL JET PUMP THREADED PRELIEF					
CHECKED		FRAME 56J IP55 TEFC					
RELEASED							
REL. DATE							

0.75 HP 02 Poles 60 Hz A

Scale 1 : 4

HYBRISUSER 00

ECM	LOC	SUMMARY OF MODIFICATIONS	EXECUTED	CHECKED	RELEASED	DATE	VER
EXECUTED	HYBRISUSER	SINGLE PH. MOTOR ROLLED STEEL JET PUMP THREADED PRELIEF					
CHECKED		FRAME 56J IP55 TEFC					
RELEASED							
REL. DATE							

PREVIEW

WDD | 00

SHEET 1 / 1