

DATA SHEET

Single Phase Induction Motor - Squirrel Cage



Customer :				
Product line : Single-Phase		Product code : 13711220		
Frame : 56H Insulation class : F Duty cycle : Cont.(S1) Ambient temperature : -20°C to +40°C Altitude : 1000 m.a.s.l. Protection degree : IP55 Design : L		Cooling method : IC411 - TEFC Mounting : F-1 Rotation ¹ : Both (CW and CCW) Starting method : Direct On Line Approx. weight ³ : 26.2 kg Moment of inertia (J) : 0.0068 kgm²		
Output [HP]		2		
Poles		4		
Frequency [Hz]		60		
Rated voltage [V]		115/208-230		
Rated current [A]		18.8/10.0-9.41		
L. R. Amperes [A]		141/75.0-70.6		
LRC [A]		7.5x(Code K)		
No load current [A]		8.80/3.79-4.40		
Rated speed [RPM]		1735		
Slip [%]		3.61		
Rated torque [kgfm]		0.837		
Locked rotor torque [%]		290		
Breakdown torque [%]		250		
Service factor				
Temperature rise		80 K		
Locked rotor time		34s (cold) 19s (hot)		
Noise level ²		54.0 dB(A)		
Efficiency (%)	25%			
	50%	80.0		
	75%	82.5		
	100%	82.5		
Power Factor	25%			
	50%	0.71		
	75%	0.79		
	100%	0.84		
Bearing type : Drive end 6204 ZZ Non drive end 6202 ZZ Sealing : V'Ring V'Ring Lubrication interval : - - Lubricant amount : - - Lubricant type : Mobil Polyrex EM		Foundation loads Max. traction : 53 kgf Max. compression : 79 kgf		
Notes				
This revision replaces and cancel the previous one, which must be eliminated. (1) Looking the motor from the shaft end. (2) Measured at 1m and with tolerance of +3dB(A). (3) Approximate weight subject to changes after manufacturing process. (4) At 100% of full load.		These are average values based on tests with sinusoidal power supply, subject to the tolerances stipulated in NEMA MG-1.		
Rev.	Changes Summary		Performed	Checked
Performed by				
Checked by			Page	Revision
Date	11/05/2022		1 / 2	

LOAD PERFORMANCE CURVE

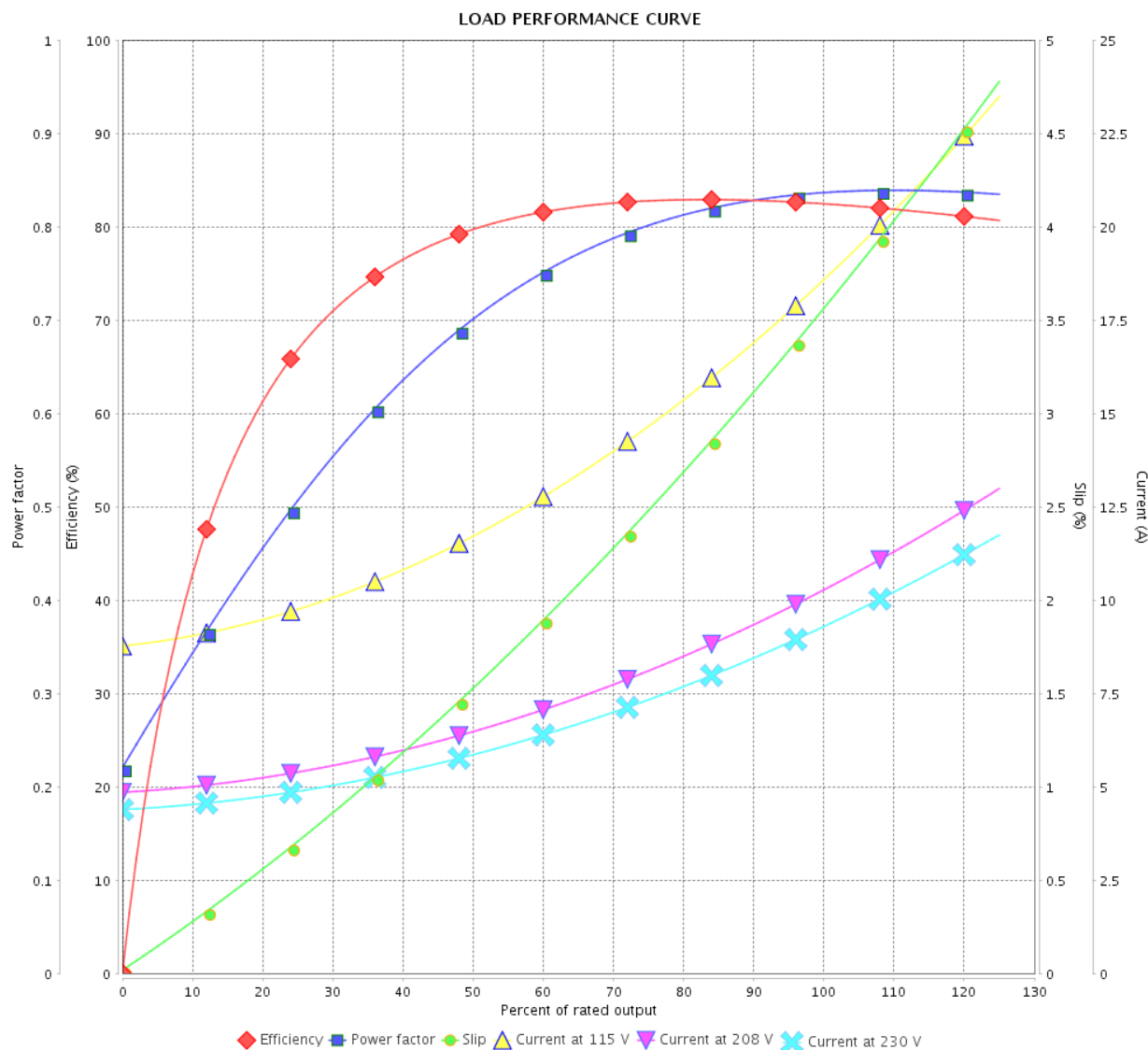
Single Phase Induction Motor - Squirrel Cage



Customer :

Product line : Single-Phase

Product code : 13711220

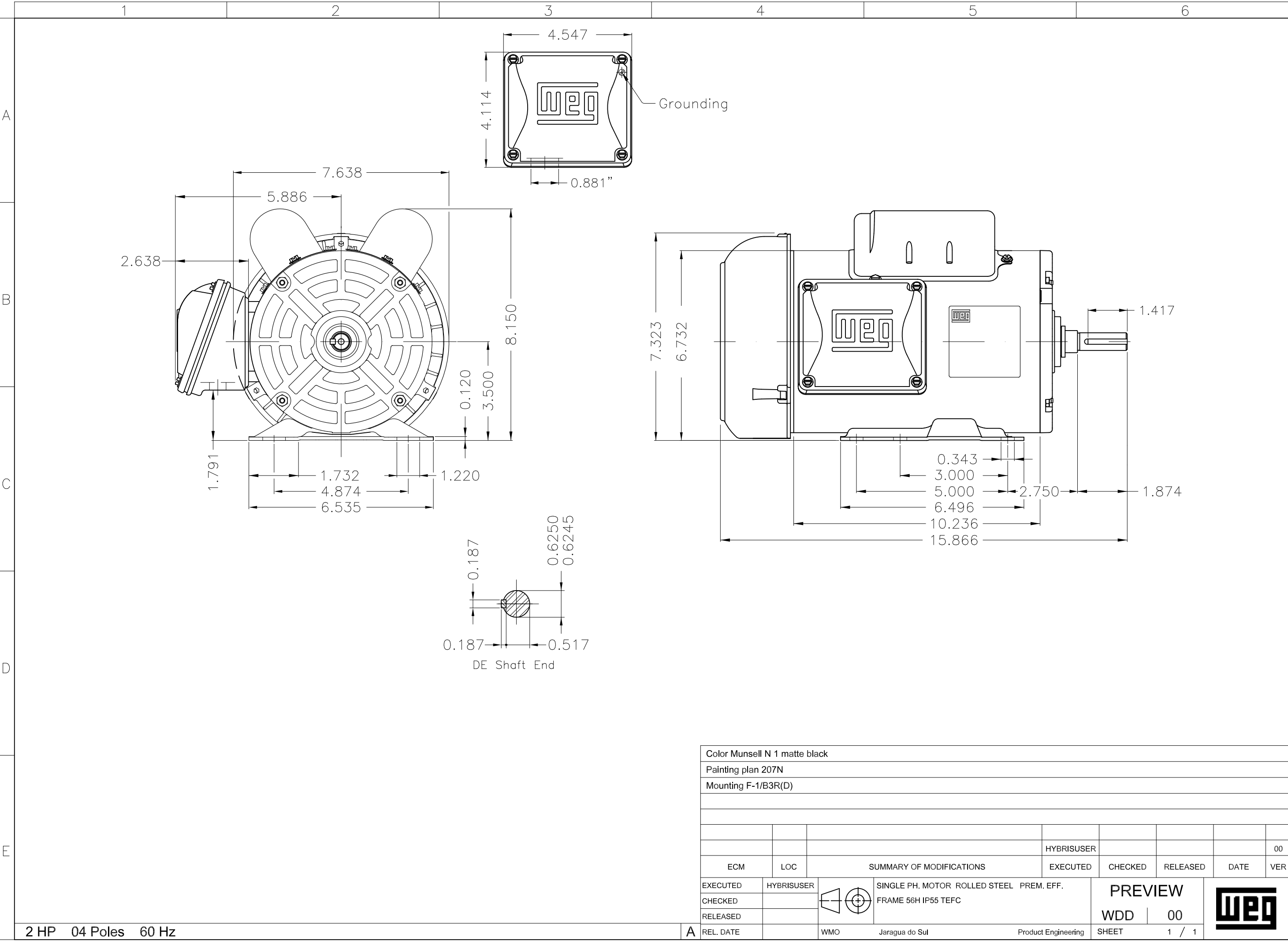


Performance : 115/208-230 V 60 Hz 4P

Rated current : 18.8/10.0-9.41 A
 LRC : 7.5
 Rated torque : 0.837 kgfm
 Locked rotor torque : 290 %
 Breakdown torque : 250 %
 Rated speed : 1735 rpm

Moment of inertia (J) : 0.0068 kgm²
 Duty cycle : Cont.(S1)
 Insulation class : F
 Service factor :
 Temperature rise : 80 K
 Design : L

Rev.	Changes Summary		Performed	Checked	Date
Performed by				Page	Revision
Checked by				2 / 2	
Date					



Color Munsell N 1 matte black									
Painting plan 207N									
Mounting F-1/B3R(D)									