

DATA SHEET

Three Phase Induction Motor - Squirrel Cage



| | | | | |
|--|---------------------|-----------------------------------|--|----------|
| Customer : | | | | |
| Product line | | : Standard Efficiency Three-Phase | Product code : | 13293057 |
| Frame | : 56H | Cooling method | : IC411 - TEFC | |
| Insulation class | : F | Mounting | : F-1 | |
| Duty cycle | : Cont.(S1) | Rotation ¹ | : Both (CW and CCW) | |
| Ambient temperature | : -20°C to +40°C | Starting method | : Direct On Line | |
| Altitude | : 1000 m.a.s.l. | Approx. weight ³ | : 14.9 kg | |
| Protection degree | : IP55 | Moment of inertia (J) | : 0.0044 kgm ² | |
| Design | : A | | | |
| Output [HP] | 1.5 | | | |
| Poles | 4 | | | |
| Frequency [Hz] | 60 | | | |
| Rated voltage [V] | 575 | | | |
| Rated current [A] | 1.78 | | | |
| L. R. Amperes [A] | 13.4 | | | |
| LRC [A] | 7.5x(Code K) | | | |
| No load current [A] | 1.20 | | | |
| Rated speed [RPM] | 1750 | | | |
| Slip [%] | 2.78 | | | |
| Rated torque [kgfm] | 0.622 | | | |
| Locked rotor torque [%] | 250 | | | |
| Breakdown torque [%] | 300 | | | |
| Service factor | 1.15 | | | |
| Temperature rise | 80 K | | | |
| Locked rotor time | 16s (cold) 9s (hot) | | | |
| Noise level ² | 52.0 dB(A) | | | |
| Efficiency (%) | 25% | | | |
| | 50% | 77.0 | | |
| | 75% | 80.0 | | |
| | 100% | 81.5 | | |
| Power Factor | 25% | | | |
| | 50% | 0.54 | | |
| | 75% | 0.67 | | |
| | 100% | 0.76 | | |
| Bearing type | : Drive end 6204 ZZ | Non drive end 6202 ZZ | Foundation loads | |
| Sealing | : V'Ring | V'Ring | Max. traction : 52 kgf | |
| Lubrication interval | : - | - | Max. compression : 67 kgf | |
| Lubricant amount | : - | - | | |
| Lubricant type | : Mobil Polyrex EM | | | |
| Notes | | | | |
| This revision replaces and cancel the previous one, which must be eliminated. (1) Looking the motor from the shaft end. (2) Measured at 1m and with tolerance of +3dB(A). (3) Approximate weight subject to changes after manufacturing process. (4) At 100% of full load. | | | These are average values based on tests with sinusoidal power supply, subject to the tolerances stipulated in NEMA MG-1. | |
| Rev. | Changes Summary | | Performed | Checked |
| | | | | |
| Performed by | | | | |
| Checked by | | | Page | Revision |
| Date | 11/05/2022 | | 1 / 2 | |

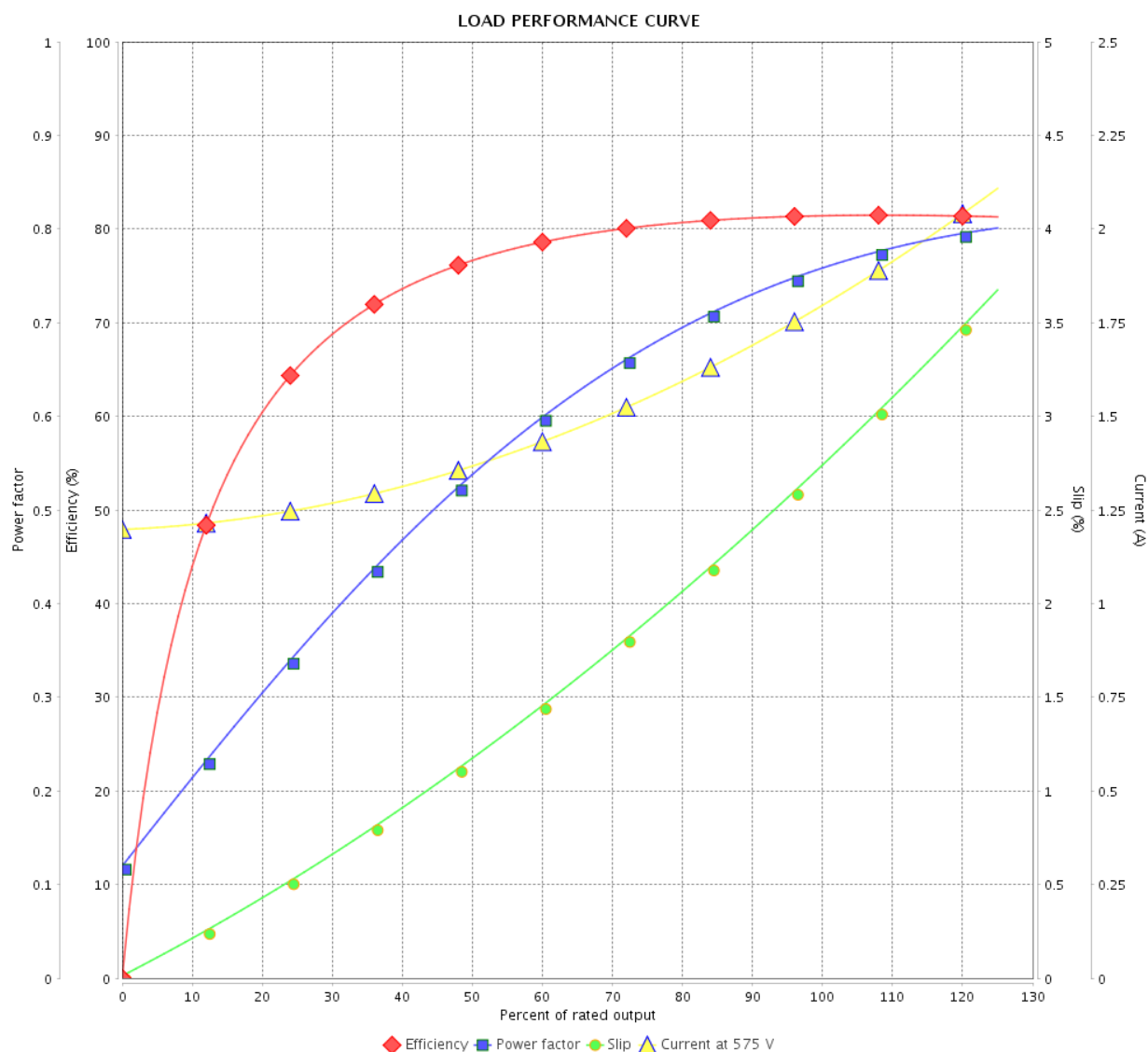
LOAD PERFORMANCE CURVE

Three Phase Induction Motor - Squirrel Cage



Customer :

Product line : Standard Efficiency Three-Phase Product code : 13293057

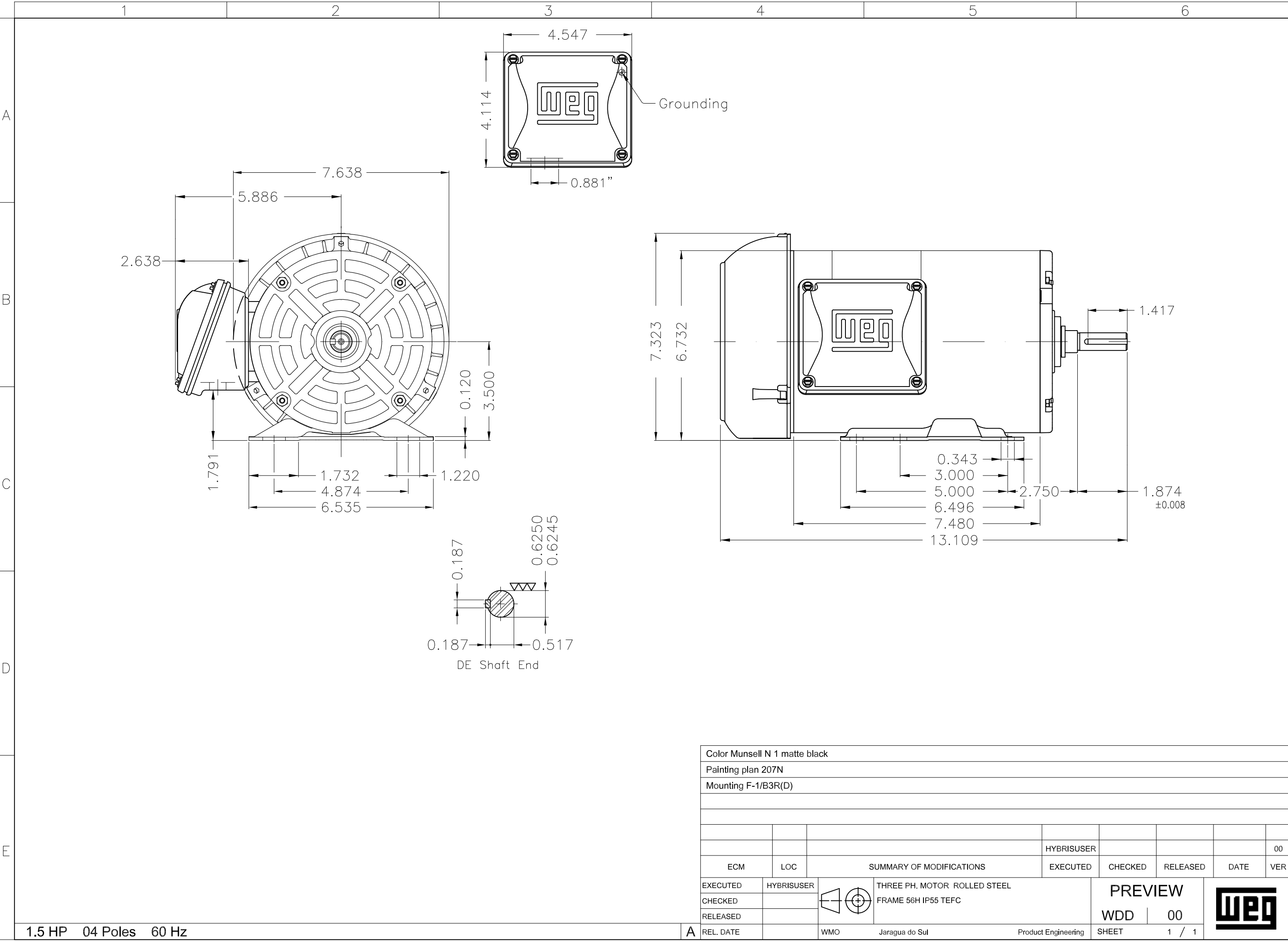


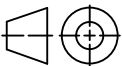

Performance : 575 V 60 Hz 4P

Rated current : 1.78 A
 LRC : 7.5
 Rated torque : 0.622 kgfm
 Locked rotor torque : 250 %
 Breakdown torque : 300 %
 Rated speed : 1750 rpm

Moment of inertia (J) : 0.0044 kgm²
 Duty cycle : Cont.(S1)
 Insulation class : F
 Service factor : 1.15
 Temperature rise : 80 K
 Design : A

| Rev. | Changes Summary | | Performed | Checked | Date |
|--------------|-----------------|--|-----------|---------------|----------|
| | | | | | |
| Performed by | | | | Page 2 / 2 | Revision |
| Checked by | | | | | |
| Date | 11/05/2022 | | | | |



| | | | | | | | | | |
|-------------------------------|------------|---|---|---------------------|----------|---------------------|----------|---|-----|
| Color Munsell N 1 matte black | | | | | | | | | |
| Painting plan 207N | | | | | | | | | |
| Mounting F-1/B3R(D) | | | | | | | | | |
| | | | | | | | | | |
| | | | | | | | | | |
| | | | | HYBRISUSER | | | | | 00 |
| ECM | LOC | SUMMARY OF MODIFICATIONS | | | EXECUTED | CHECKED | RELEASED | DATE | VER |
| EXECUTED | HYBRISUSER |  | THREE PH. MOTOR ROLLED STEEL FRAME 56H IP55 TEFC | | | PREVIEW WDD 00 | |  | |
| CHECKED | | | | | | | | | |
| RELEASED | | | | | | | | | |
| REL. DATE | | WMO | Jaragua do Sul | Product Engineering | SHEET | 1 / 1 | | | |