

# DATA SHEET



## Single Phase Induction Motor - Squirrel Cage

Customer :

Product line : Rolled Steel Fan and Exhaust Single-Phase Split Phase      Product code : 17925319

Frame	: 48	Locked rotor time	: 10s (cold) 6s (hot)
Output	: 0.33 HP (0.25 kW)	Temperature rise	: 80 K
Frequency	: 60 Hz	Duty cycle	: Cont.(S1)
Rated voltage	: 115 V	Ambient temperature	: -20°C to +40°C
Poles	: 4	Altitude	: 1000 m.a.s.l.
Rated current	: 5.16 A	Cooling method	: IC01 - ODP
	: 6.0x(Code M)	Mounting	: F-1
Rated speed	: 1710 rpm	Rotation <sup>1</sup>	: Both (CW and CCW)
Rated torque	: 0.140 kgfm	Starting method	: Direct On Line
Insulation class	: F	Approx. weight <sup>3</sup>	: 8.9 kg
Service factor	: 1.35		
Moment of inertia (J)	: 0.0013 kgm <sup>2</sup>		
Design	: N		

Output	50%	75%	100%	Foundation loads	
Efficiency (%)	51.0	58.0	62.0	Max. traction	: 7 kgf
Power Factor	0.48	0.60	0.68	Max. compression	: 15 kgf

	Drive end	Non drive end
Bearing type	: 6203 ZZ	: 6202 ZZ
Sealing	: Without Bearing Seal	: Without Bearing Seal
Lubrication interval	: -	: -
Lubricant amount	: -	: -
Lubricant type	: Mobil Polyrex EM	

### Notes

This revision replaces and cancel the previous one, which must be eliminated.

- (1) Looking the motor from the shaft end.
- (2) Measured at 1m and with tolerance of +3dB(A).
- (3) Approximate weight subject to changes after manufacturing process.
- (4) At 100% of full load.

These are average values based on tests with sinusoidal power supply, subject to the tolerances stipulated in NEMA MG-1.

Rev.	Changes Summary	Performed	Checked	Date
Performed by			Page	Revision
Checked by			1 / 2	
Date	29/06/2026			

# LOAD PERFORMANCE CURVE

Single Phase Induction Motor - Squirrel Cage

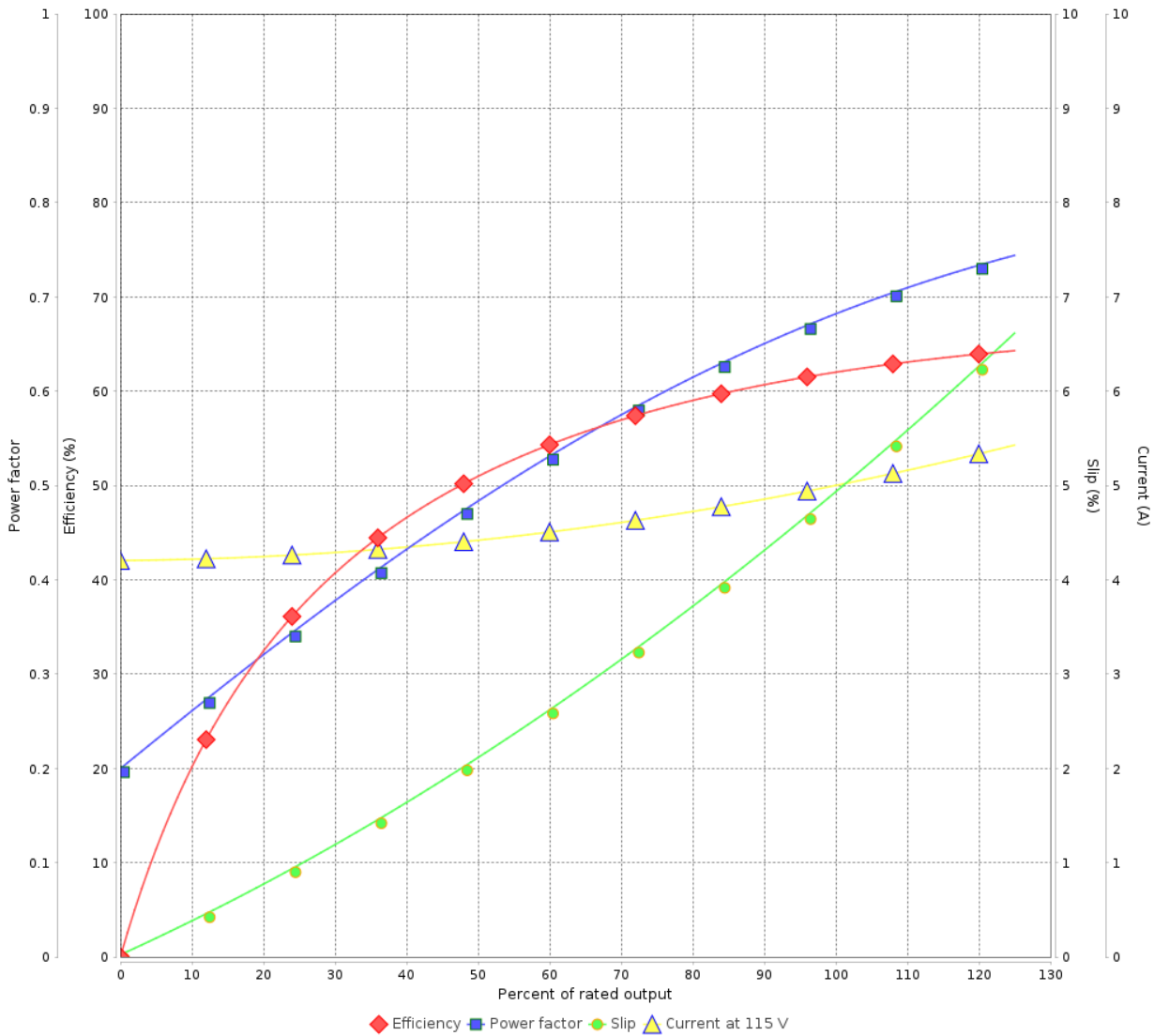


Customer :

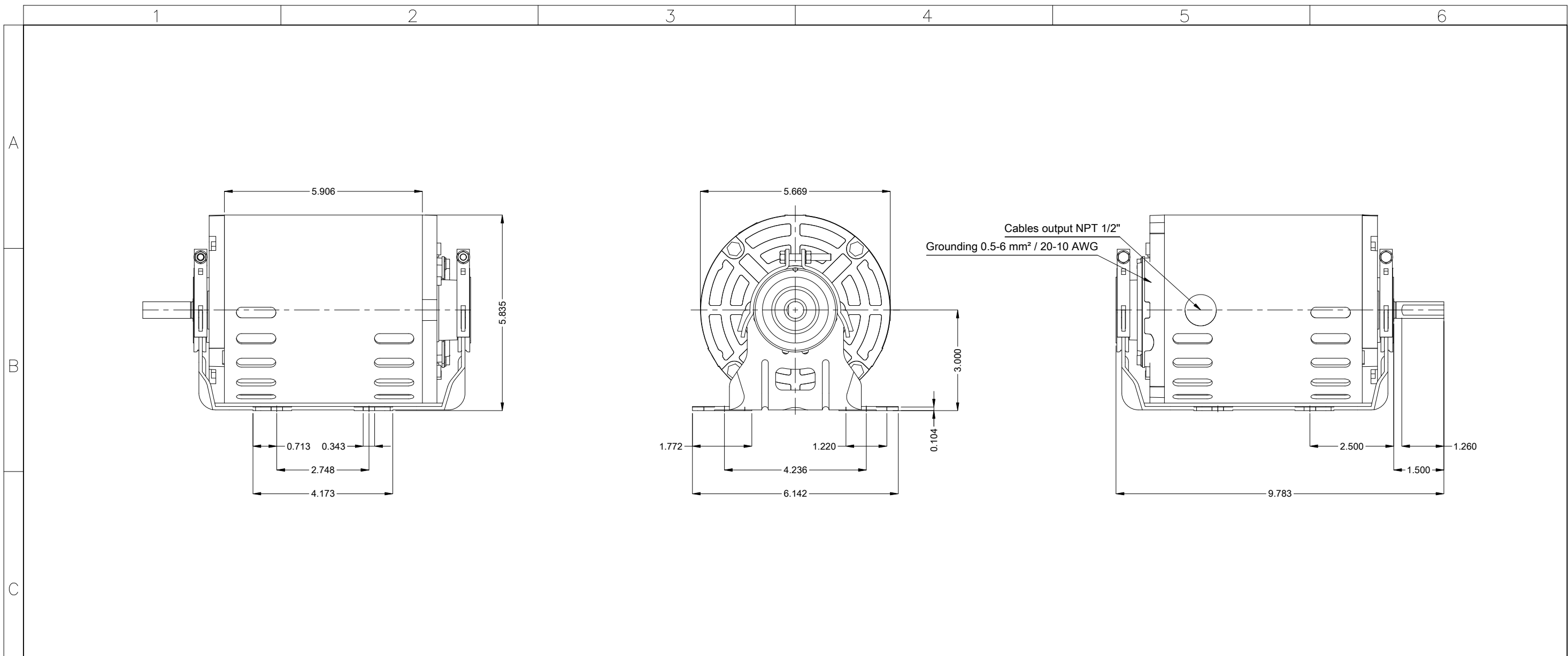
Product line : Rolled Steel Fan and Exhaust  
Single-Phase Split Phase

Product code : 17925319

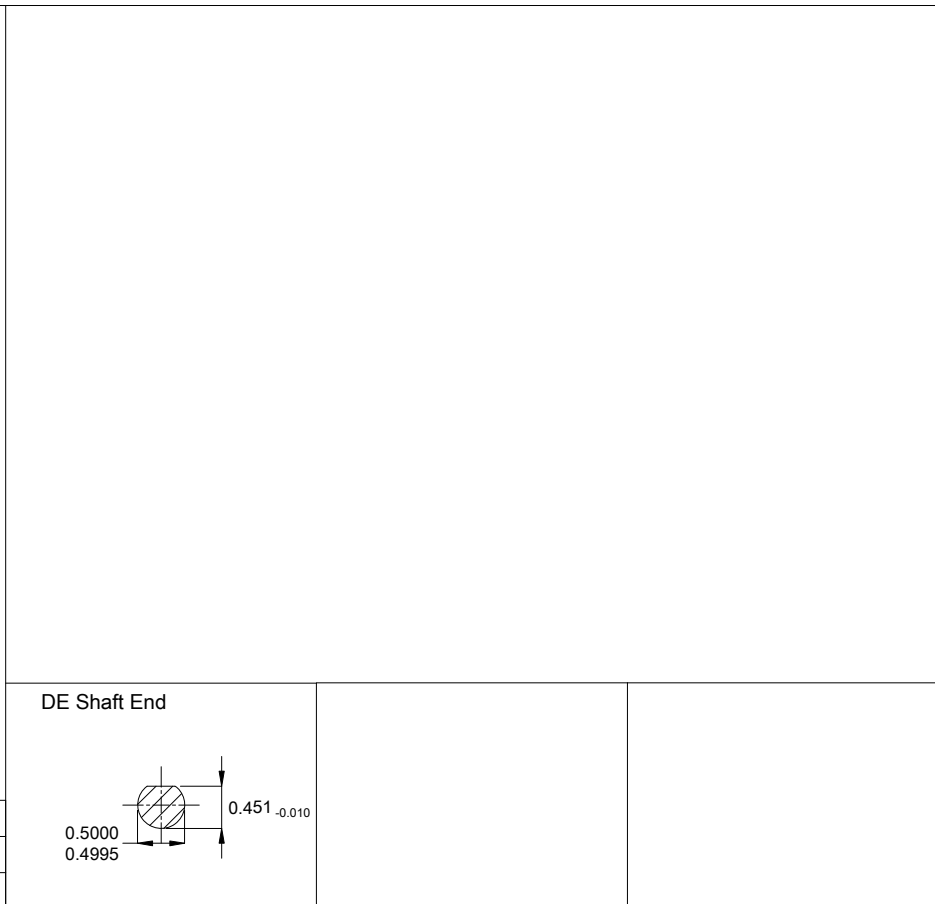
LOAD PERFORMANCE CURVE



Rev.	Changes Summary	Performed	Checked	Date
Performed by			Page 2 / 2	Revision
Checked by				
Date	29/06/2026			



Phenolic thermal protector - automatic
Mounting MARKET F-1/B3R(D)
Mounting F-1/B3R(D)



0.33 HP 04 Poles 60 Hz						A
Scale						1 : 3
ECM	LOC	SUMMARY OF MODIFICATIONS		EXECUTED	CHECKED	RELEASED
EXECUTED	HYBRISUSER	SINGLE PH. MOTOR ROLLED STEEL FAN / EXHAUST		EXECUTED	CHECKED	RELEASED
CHECKED		FRAME 48 IP21 ODP		EXECUTED	CHECKED	RELEASED
RELEASED				EXECUTED	CHECKED	RELEASED
REL. DATE				EXECUTED	CHECKED	RELEASED
				HYBRISUSER		00
				PREVIEW		
				WDD		00
				SHEET		1 / 1

Dimensions in inches

A3

