

DATA SHEET

Three Phase Induction Motor - Squirrel Cage



Customer : V.J. PAMENSKY CANADA INC.

Product line : W01 - TEAO - Grain Dryer

Frame	: 143/5TZ	Cooling method	: IC418 - TEAO
Insulation class	: F	Minimum air speed over motor	: 12.1 m/s
Duty cycle	: S1	Mounting	: F-3/B3T
Ambient temperature	: -20 °C to +40 °C	Rotation ¹	: Counter clockwise
Altitude	: 3280 ft	Starting method	: Direct On Line
Protection degree	: IP55	Approx. weight ³	: 40.9 lb
Design	: B	Moment of inertia (J)	: 0.1092 sq.ft.lb

Output	1.5 HP (1.1 kW)	3 HP (2.2 kW)	
Poles	2	2	
Frequency	60 Hz	60 Hz	
Rated voltage	575 V	575 V	
Rated current	1.93 A	3.04 A	
L. R. Amperes	22.2 A	21.9 A	
LRC	11.5	7.2	
No load current	1.39 A	1.38 A	
Rated speed	3550 rpm	3480 rpm	
Slip	1.39 %	3.33 %	
Rated torque	2.19 ft.lb	4.46 ft.lb	
Locked rotor torque	450 %	220 %	
Pull up torque	380 %	185 %	
Breakdown torque	620 %	290 %	
Service factor	1.00	1.00	
Temperature rise	105 K	105 K	
Noise level ²	68.0 dB(A)	68.0 dB(A)	
Locked rotor time (hot)	15 s	10 s	
Locked rotor time (cold)	27 s	18 s	
Efficiency (%)	50%	69.5	79.3
	75%	76.3	81.7
	100%	79.7	81.7
Power Factor	50%	0.51	0.73
	75%	0.63	0.84
	100%	0.72	0.89

Bearing type	Drive end	Non drive end	Foundation loads
	6205-ZZ	6203-ZZ	
Lubrication interval	-	-	Max. compression :
Lubricant amount	-	-	Load type :-
Lubricant type	MOBIL POLYREX EM		Load torque :-
			Load inertia (J=GD ² /4) :-

Notes
See notes on page 2.

This revision replaces and cancel the previous one, which must be eliminated.
(1) Looking the motor from the shaft end.
(2) Measured at 1m and with tolerance of +3dB(A).
(3) Approximate weight, subject to be changed after manufacturing process.

These are average values based on tests with sinusoidal power supply, subject to the tolerances stipulated in NEMA MG 1-12.

Rev.	Changes Summary	Rev.	Checked	Date
Performed by	omarm		1847464123	
Checked by	AUTOMATICO		Page	Rev.
Date	12/05/2026		1 / 2	0

DATA SHEET

Three Phase Induction Motor - Squirrel Cage



Customer : V.J. PAMENSKY CANADA INC.

Product line : W01 - TEAO - Grain Dryer

Thermal protection ID	Application	Type	Quantity	Sensing Temperature
1	Winding	Thermostat - 2 wires	1 x Phase	155°C

Notes

Standards	Specification : MG1 - Part 10	Vibration : MG1 - Part 7
	Test : MG1 - Part 12	Tolerance : MG1 - Part 12
	Noise : MG1 - Part 9	

This revision replaces and cancel the previous one, which must be eliminated.
 (1) Looking the motor from the shaft end.
 (2) Measured at 1m and with tolerance of +3dB(A).
 (3) Approximate weight, subject to be changed after manufacturing process.

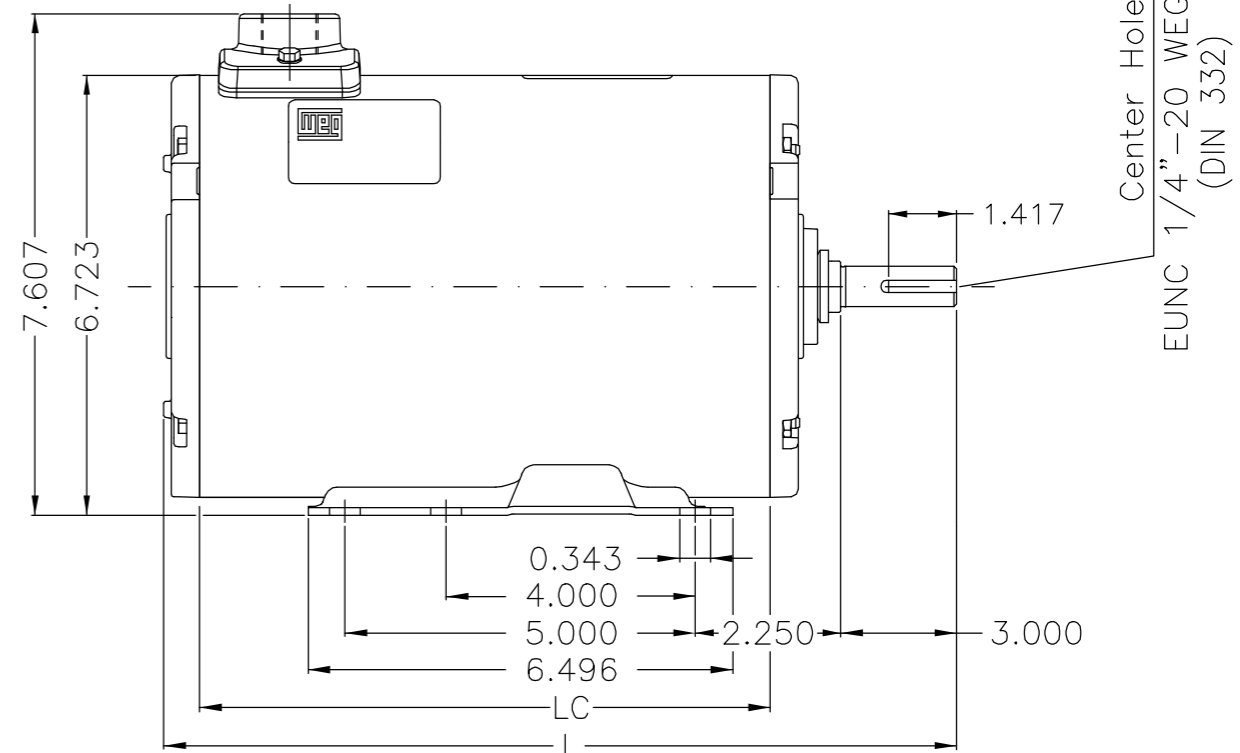
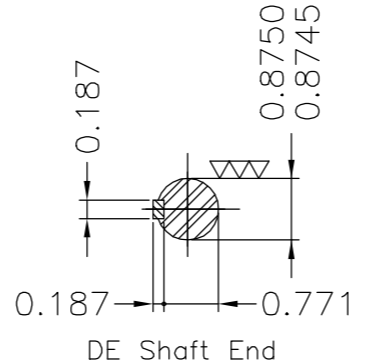
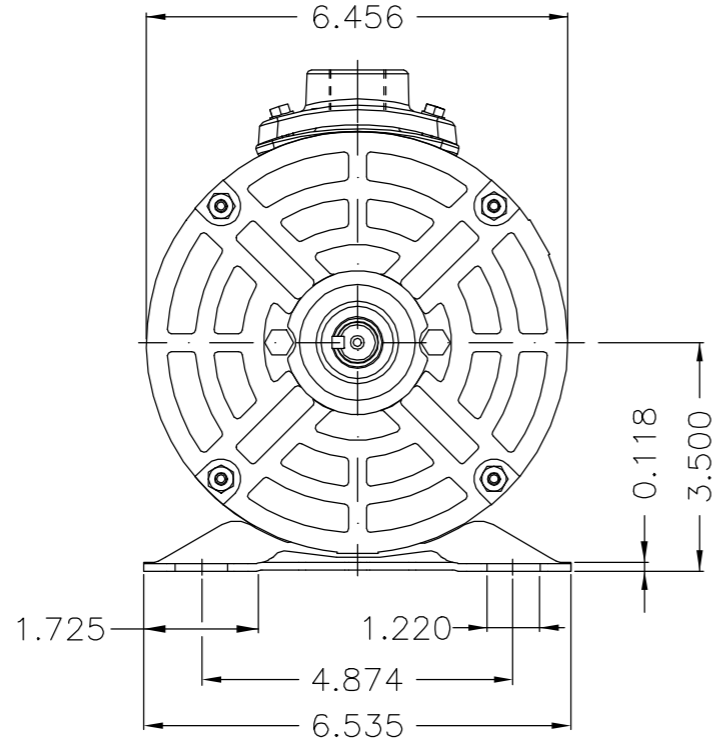
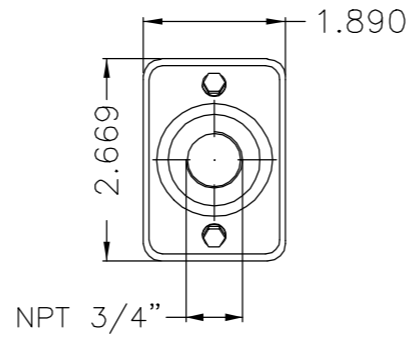
These are average values based on tests with sinusoidal power supply, subject to the tolerances stipulated in NEMA MG 1-12.

Rev.	Changes Summary	Rev.	Checked	Date
Performed by	omarm	1847464123		
Checked by	AUTOMATICO	Page	Rev.	
Date	12/05/2026	2 / 2	0	

EIXO/SHAFT	
PADRÃO/STANDARD	X
OPCIONAL/OPTIONAL	
ESPECIAL/SPECIAL	

Dimensões em polegadas
Dimensions in inches

THIS IS AN UPDATED REVISION, THE PREVIOUS ONE MUST BE DISREGARDED.



Center Hole
EUNC 1/4"-20 WEG TBG253
(DIN 332)

Comprimento dos cabos de acessórios 30+2" a partir da base / Accessories cables length 30+2" from the base
 Comprimento do cabo de aterramento 30+2" a partir da base / Grounding lead 30+2" length from base
 Comprimento dos cabos de ligação 30+2" a partir da base / Connection leads 30+2" length from base
 Etiqueta sobressalente sem logotipos de certificação e sem número de série fornecida em avulso / Spare label without certification logo and without serial number supplied loose
 Forma construtiva F-3/B3T / Mounting F-3/B3T

WEG ELECTRIC CORP.

500001355979		ALTERADO CONFORME ECM	ARIVABENE	MENSOR	11.09.2017	04
500001186609		ALTERAÇÃO CONFORME ECM.	LGAMA	TOBIASR	08.06.2016	03
ECM	LOC	SUMMARY OF MODIFICATIONS	EXECUTED	CHECKED	RELEASED	DATE VER
EXECUTED	PATRICKL	THREE PHASE TEAO ROLLED STEEL FRAME 143/5TZ IP55	10003403642			
CHECKED			000	04		
RELEASED	EMERSONRH		SHEET 1 / 1			
REL DT	03.03.2015	WMO	LINHARES	ENGENHARIA DE PRODUTO		

				LC	L	
3 / 4.5 HP	04 Poles	60Hz	413759943	9.055	13.582	B
1.5 / 3 HP	04 Poles	60Hz	413760289	8,268	12.795	A

UNCONTROLLED COPY

RELEASED

ZME A3