

# DATA SHEET

## Single Phase Induction Motor - Squirrel Cage



Customer : V.J. PAMENSKY CANADA INC.

Product line : W01 - ODP Compressor Duty Standard Efficiency Product code : 17552661

Frame	: 56	Locked rotor time	: 7 s (hot) 13 s (cold)
Output	: 1 HP (0.75 kW)	Temperature rise	: 80 K
Poles	: 4	Duty cycle	: S1
Frequency	: 60 Hz	Ambient temperature	: -20 °C to +40 °C
Rated voltage	: 115/208-230 V	Altitude	: 3280 ft
Rated current	: 11.9/6.20-5.96 A	Protection degree	: IP21
L. R. Amperes	: 75.1/39.1-37.5 A	Cooling method	: IC01 - ODP
LRC	: 6.3	Mounting	: F-1/B3R(D)
No load current	: 9.00/3.88-4.50 A	Rotation <sup>1</sup>	: Both
Rated speed	: 1745 rpm	Noise level <sup>2</sup>	: 70.0 dB(A)
Slip	: 3.06 %	Vibration class	: A
Rated torque	: 2.97 ft.lb	Starting method	: Direct On Line
Locked rotor torque	: 220 %	Approx. weight <sup>3</sup>	: 30.9 lb
Pull up torque	: 185 %	Painting plan	: 207N
Breakdown torque	: 250 %	Color	: MUNSELL N 1 - MATTE
Insulation class	: F		
Service factor	: 1.00		
Moment of inertia (J)	: 0.1424 sq.ft.lb		

Output	50%	75%	100%	Load type	: -
Efficiency (%)	60.0	68.0	72.0	Load torque	: -
Power Factor	0.57	0.68	0.76	Load inertia (J=GD <sup>2</sup> /4)	: -

Bearing type	Drive end 6204-ZZ	Non drive end 6202-ZZ	Foundation loads	
Lubrication interval	-	-	Max. traction	: -
Lubricant amount	-	-	Max. compression	: -
Lubricant type	MOBIL POLYREX EM			

Notes  
See notes on page 2.

This revision replaces and cancel the previous one, which must be eliminated.  
(1) Looking the motor from the shaft end.  
(2) Measured at 1m and with tolerance of +3dB(A).  
(3) Approximate weight, subject to be changed after manufacturing process.

These are average values based on tests with sinusoidal power supply, subject to the tolerances stipulated in NEMA MG 1-12.

Rev.	Changes Summary		Rev.	Checked	Date
Performed by	farazq			1847486668	
Checked by	AUTOMATICO			Page	Rev.
Date	12/05/2026			1 / 2	0

# DATA SHEET

## Single Phase Induction Motor - Squirrel Cage



Customer : V.J. PAMENSKY CANADA INC.

Product line : W01 - ODP Compressor Duty Standard Efficiency Product code : 17552661

Thermal protection ID

Application

Type

Quantity

Sensing Temperature

Notes

Standards

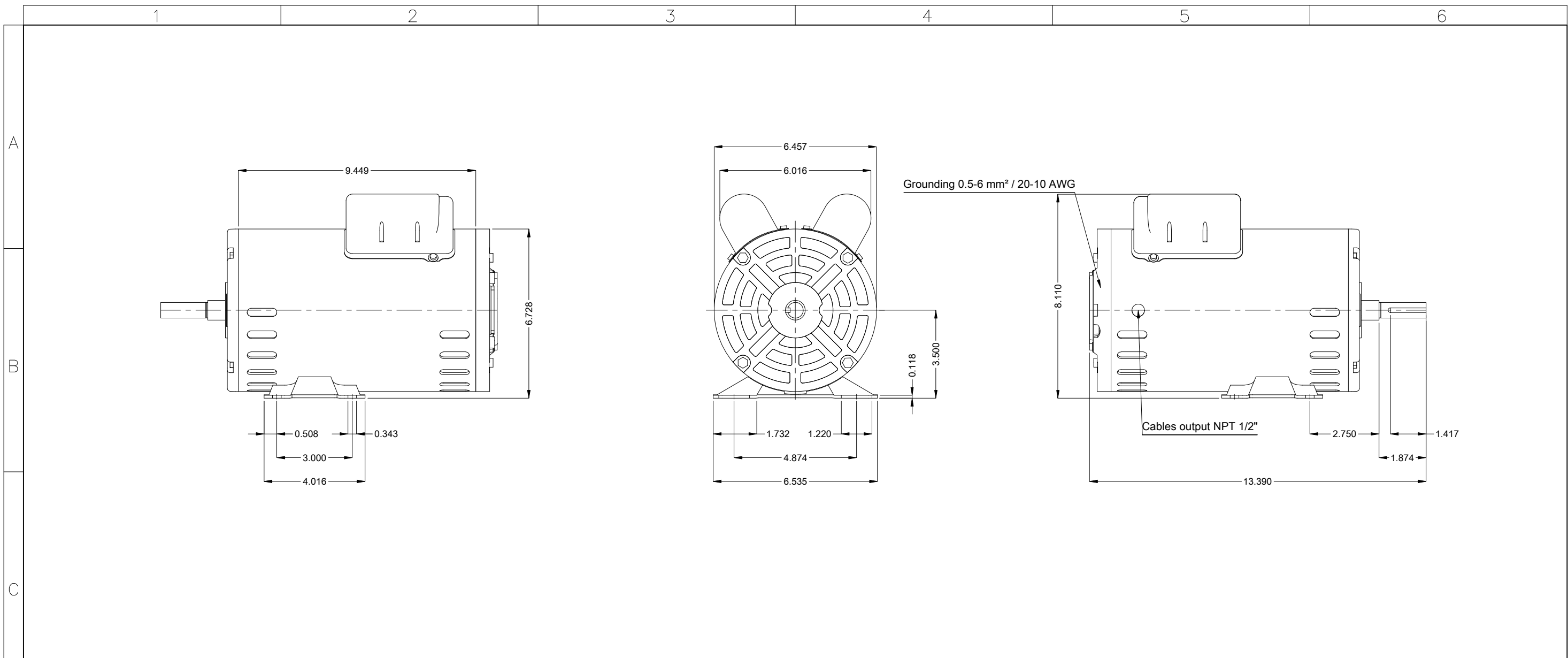
Specification : MG1 - Part 10  
Test : MG1 - Part 12  
Noise : MG1 - Part 9

Vibration : MG1 - Part 7  
Tolerance : MG1 - Part 12

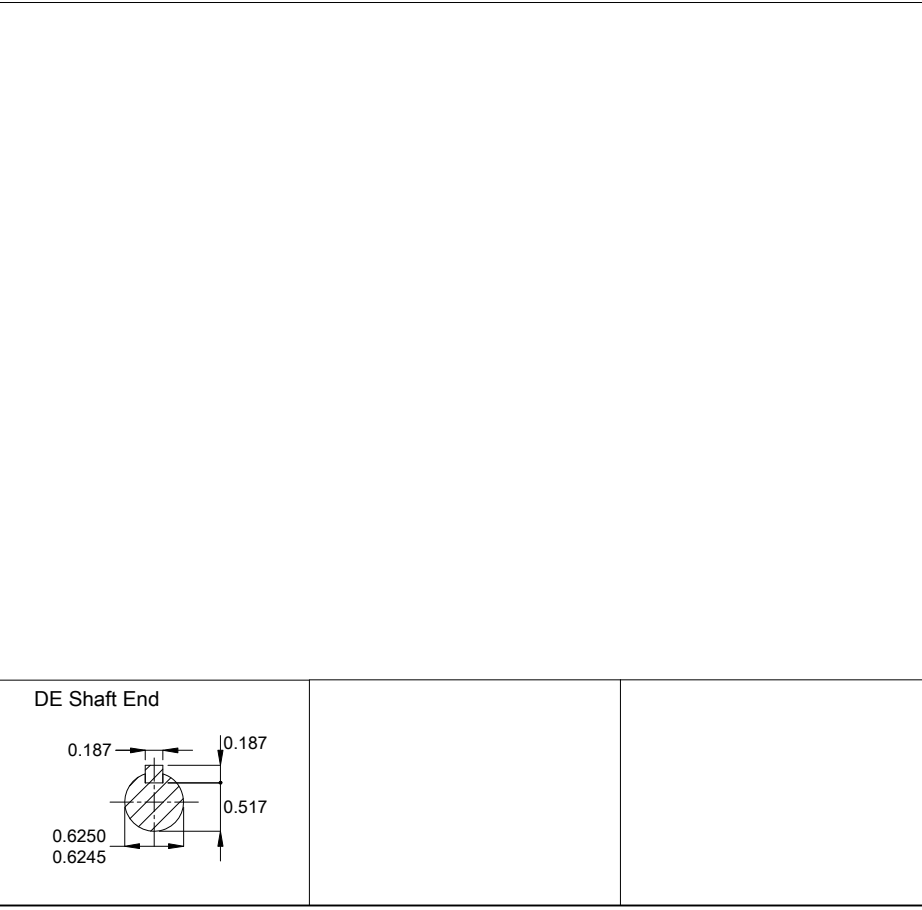
This revision replaces and cancel the previous one, which must be eliminated.  
(1) Looking the motor from the shaft end.  
(2) Measured at 1m and with tolerance of +3dB(A).  
(3) Approximate weight, subject to be changed after manufacturing process.

These are average values based on tests with sinusoidal power supply, subject to the tolerances stipulated in NEMA MG 1-12.

Rev.	Changes Summary	Rev.	Checked	Date
Performed by	farazq	1847486668		
Checked by	AUTOMATICO	Page	Rev.	
Date	12/05/2026	2 / 2	0	



Reinforce the foot with 2 mig welding spots  
 Phenolic thermal protector - manual  
 Mounting MARKET F-1/B3R(D)  
 Mounting B3R(D)



1 HP 04 Poles 60 Hz										A	
Scale										1 : 4	
HYBRISUSER										00	
ECM	LOC	SUMMARY OF MODIFICATIONS					EXECUTED	CHECKED	RELEASED	DATE	VER
EXECUTED	HYBRISUSER	SINGLE PH. MOTOR W01 COMPRESSOR DUTY					PREVIEW				
CHECKED		FRAME 56 IP21 ODP					WDD	00			
RELEASED							SHEET		1 / 1		
REL. DATE											