

# DATA SHEET

## Three Phase Induction Motor - Squirrel Cage



Customer :				
Product line		: Standard Efficiency Three-Phase	Product code :	13997114
Frame	: 56	Cooling method	: IC411 - TEFC	
Insulation class	: F	Mounting	: F-1	
Duty cycle	: Cont.(S1)	Rotation <sup>1</sup>	: Both (CW and CCW)	
Ambient temperature	: -20°C to +40°C	Starting method	: Direct On Line	
Altitude	: 1000 m.a.s.l.	Approx. weight <sup>3</sup>	: 8.8 kg	
Protection degree	: IP55	Moment of inertia (J)	: 0.0019 kgm <sup>2</sup>	
Output [HP]	0.5			
Poles	2			
Frequency [Hz]	60			
Rated voltage [V]	575			
Rated current [A]	0.674			
L. R. Amperes [A]	4.72			
LRC [A]	7.0x(Code L)			
No load current [A]	0.360			
Rated speed [RPM]	3500			
Slip [%]	2.78			
Rated torque [kgfm]	0.104			
Locked rotor torque [%]	260			
Breakdown torque [%]	300			
Service factor	1.15			
Temperature rise	80 K			
Locked rotor time	63s (cold) 35s (hot)			
Noise level <sup>2</sup>	68.0 dB(A)			
Efficiency (%)	25%			
	50%	55.0		
	75%	62.0		
	100%	68.0		
Power Factor	25%			
	50%	0.67		
	75%	0.75		
	100%	0.81		
Bearing type	: Drive end 6203 ZZ	Non drive end 6202 ZZ	Foundation loads	
Sealing	: V'Ring	V'Ring	Max. traction : 5 kgf	
Lubrication interval	: -	-	Max. compression : 14 kgf	
Lubricant amount	: -	-		
Lubricant type	: Mobil Polyrex EM			
Notes				
<p>This revision replaces and cancel the previous one, which must be eliminated.</p> <p>(1) Looking the motor from the shaft end.</p> <p>(2) Measured at 1m and with tolerance of +3dB(A).</p> <p>(3) Approximate weight subject to changes after manufacturing process.</p> <p>(4) At 100% of full load.</p>			<p>These are average values based on tests with sinusoidal power supply, subject to the tolerances stipulated in NEMA MG-1.</p>	
Rev.	Changes Summary		Performed	Checked
Performed by				
Checked by			Page	Revision
Date	11/05/2022		1 / 2	

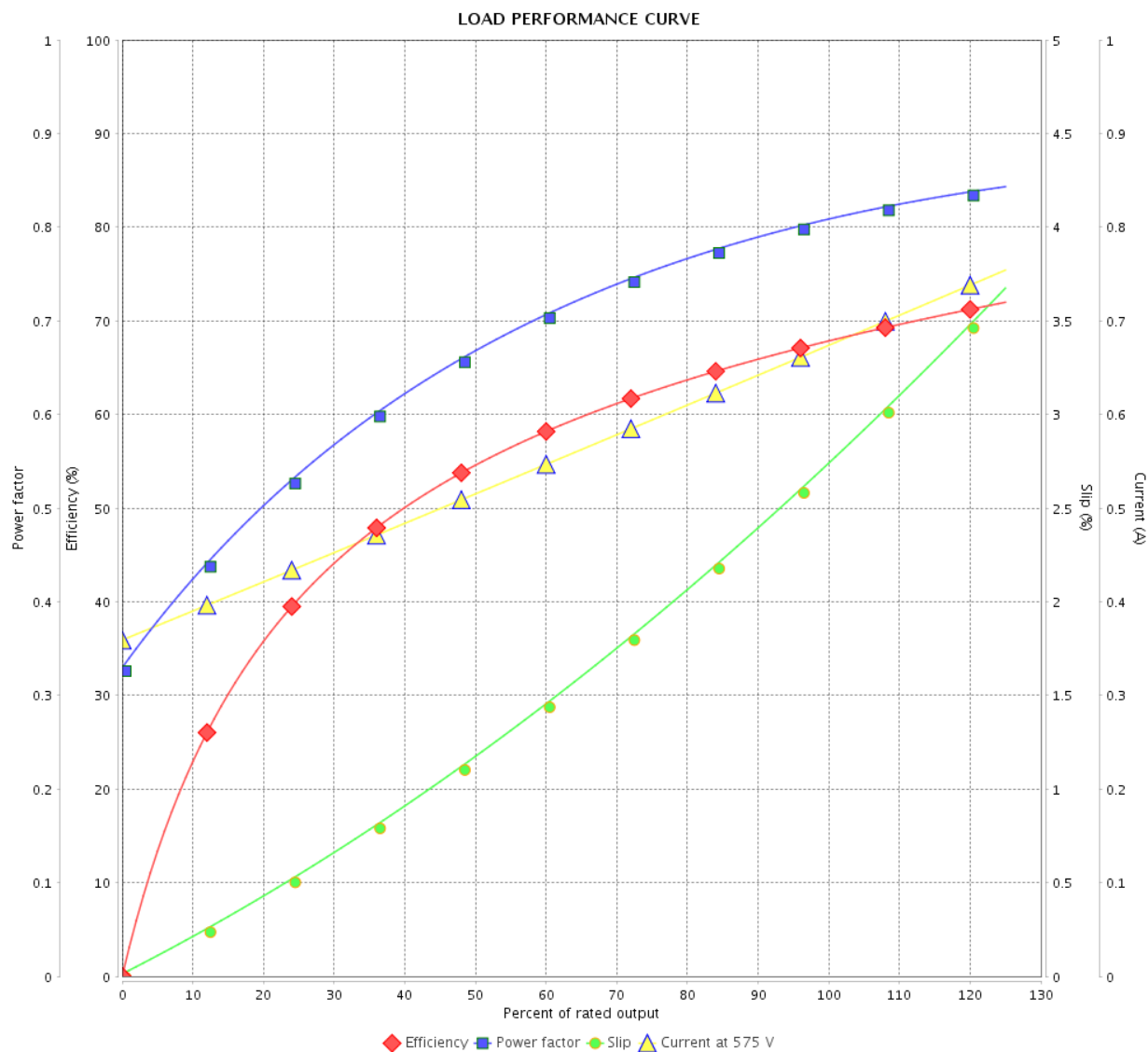
# LOAD PERFORMANCE CURVE

Three Phase Induction Motor - Squirrel Cage



Customer :

Product line : Standard Efficiency Three-Phase Product code : 13997114

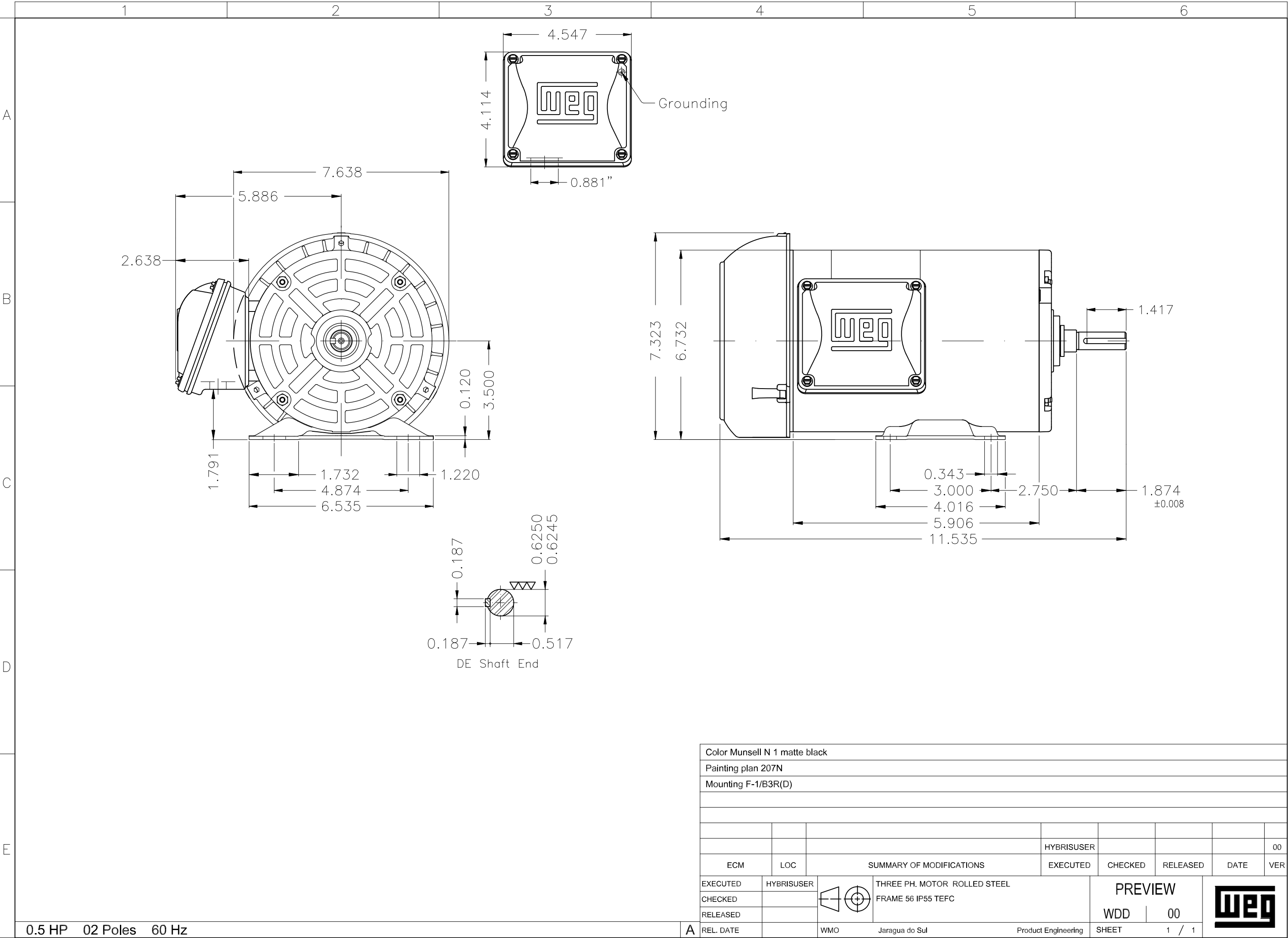


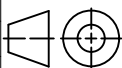

Performance : 575 V 60 Hz 2P

Rated current : 0.674 A  
 LRC : 7.0  
 Rated torque : 0.104 kgfm  
 Locked rotor torque : 260 %  
 Breakdown torque : 300 %  
 Rated speed : 3500 rpm

Moment of inertia (J) : 0.0019 kgm<sup>2</sup>  
 Duty cycle : Cont.(S1)  
 Insulation class : F  
 Service factor : 1.15  
 Temperature rise : 80 K

Rev.	Changes Summary		Performed	Checked	Date
Performed by				Page	Revision
Checked by				2 / 2	
Date					



Color Munsell N 1 matte black									
Painting plan 207N									
Mounting F-1/B3R(D)									
						HYBRISUSER			00
ECM	LOC	SUMMARY OF MODIFICATIONS				EXECUTED	CHECKED	RELEASED	DATE VER
EXECUTED	HYBRISUSER	 THREE PH. MOTOR ROLLED STEEL FRAME 56 IP55 TEFC				PREVIEW			
CHECKED									
RELEASED									
REL. DATE									
		WMO	Jaragua do Sul	Product Engineering	SHEET	1	/	1	