

DATA SHEET

Three Phase Induction Motor - Squirrel Cage



Customer :

Product line : Standard Efficiency Three-Phase Product code : 12630184

Frame	: 56	Cooling method	: IC411 - TEFC
Insulation class	: F	Mounting	: F-1
Duty cycle	: Cont.(S1)	Rotation ¹	: Both (CW and CCW)
Ambient temperature	: -20°C to +40°C	Starting method	: Direct On Line
Altitude	: 1000 m.a.s.l.	Approx. weight ³	: 9.7 kg
Protection degree	: IP55	Moment of inertia (J)	: 0.0025 kgm ²

Output [HP]	0.5	0.5	0.5
Poles	4	4	4
Frequency [Hz]	60	50	50
Rated voltage [V]	208-230/460	190-220/380	415
Rated current [A]	1.91-1.72/0.862	1.90-1.64/0.950	0.962
L. R. Amperes [A]	13.3-12.1/6.03	11.0-9.52/5.51	6.06
LRC [A]	7.0x(Code L)	5.8x(Code J)	6.3x(Code K)
No load current [A]	1.03-1.20/0.600	1.24-1.07/0.618	0.737
Rated speed [RPM]	1760	1445	1460
Slip [%]	2.22	3.67	2.67
Rated torque [kgfm]	0.206	0.251	0.249
Locked rotor torque [%]	240	180	220
Breakdown torque [%]	300	250	310
Service factor		1.15	1.15
Temperature rise	80 K	80 K	80 K
Locked rotor time	36s (cold) 20s (hot)	0s (cold) 0s (hot)	0s (cold) 0s (hot)
Noise level ²	52.0 dB(A)	49.0 dB(A)	49.0 dB(A)
Efficiency (%)	25%		
	50%	68.0	70.7
	75%	74.0	75.0
	100%	77.0	75.9
Power Factor	25%		
	50%	0.48	0.56
	75%	0.61	0.69
	100%	0.70	0.78

Bearing type	: Drive end	Non drive end	Foundation loads
	: 6203 ZZ	6202 ZZ	
Sealing	: V'Ring	Without	Max. traction : 20 kgf
		Bearing Seal	
Lubrication interval	: -	-	Max. compression : 29 kgf
Lubricant amount	: -	-	
Lubricant type	: Mobil Polyrex EM		

Notes
USABLE @208V SF 1.00

This revision replaces and cancel the previous one, which must be eliminated.

- (1) Looking the motor from the shaft end.
- (2) Measured at 1m and with tolerance of +3dB(A).
- (3) Approximate weight subject to changes after manufacturing process.
- (4) At 100% of full load.

These are average values based on tests with sinusoidal power supply, subject to the tolerances stipulated in NEMA MG-1.

Rev.	Changes Summary	Performed	Checked	Date
Performed by		Page 1 / 4		
Checked by				
Date	11/05/2022			
		Revision		

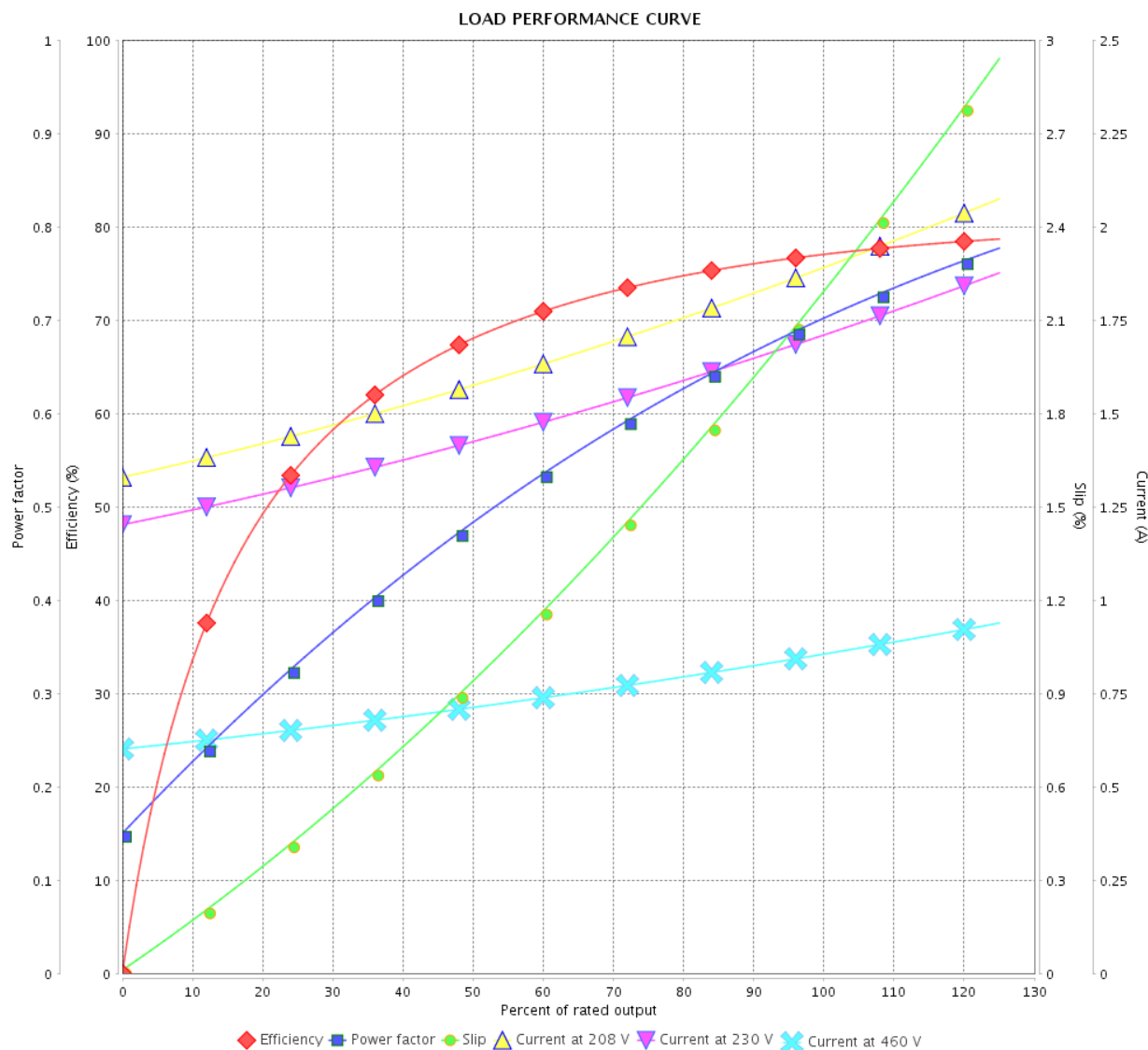
LOAD PERFORMANCE CURVE

Three Phase Induction Motor - Squirrel Cage



Customer :

Product line : Standard Efficiency Three-Phase Product code : 12630184



Performance : 208-230/460 V 60 Hz 4P

Rated current : 1.91-1.72/0.862 A
 LRC : 7.0
 Rated torque : 0.206 kgfm
 Locked rotor torque : 240 %
 Breakdown torque : 300 %
 Rated speed : 1760 rpm

Moment of inertia (J) : 0.0025 kgm²
 Duty cycle : Cont.(S1)
 Insulation class : F
 Service factor :
 Temperature rise : 80 K

Rev.	Changes Summary		Performed	Checked	Date
Performed by					
Checked by					
Date	11/05/2022			Page 2 / 4	Revision

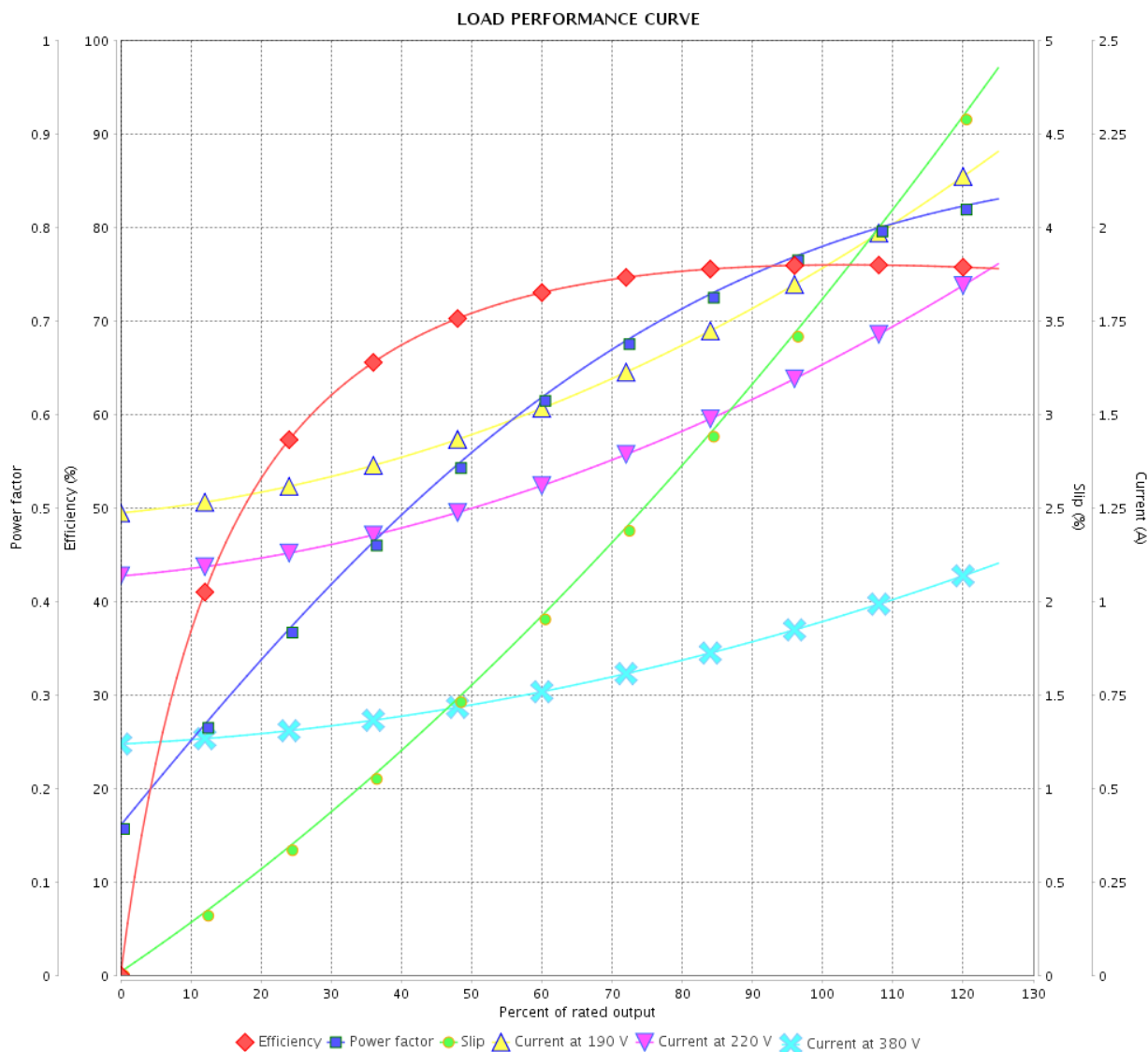
LOAD PERFORMANCE CURVE

Three Phase Induction Motor - Squirrel Cage



Customer :

Product line : Standard Efficiency Three-Phase Product code : 12630184



Performance : 190-220/380 V 50 Hz 4P

Rated current : 1.90-1.64/0.950 A
 LRC : 5.8
 Rated torque : 0.251 kgfm
 Locked rotor torque : 180 %
 Breakdown torque : 250 %
 Rated speed : 1445 rpm

Moment of inertia (J) : 0.0025 kgm²
 Duty cycle : Cont.(S1)
 Insulation class : F
 Service factor : 1.15
 Temperature rise : 80 K

Rev.	Changes Summary	Performed	Checked	Date
Performed by		Page 3 / 4		
Checked by				
Date	11/05/2022			
		Revision		

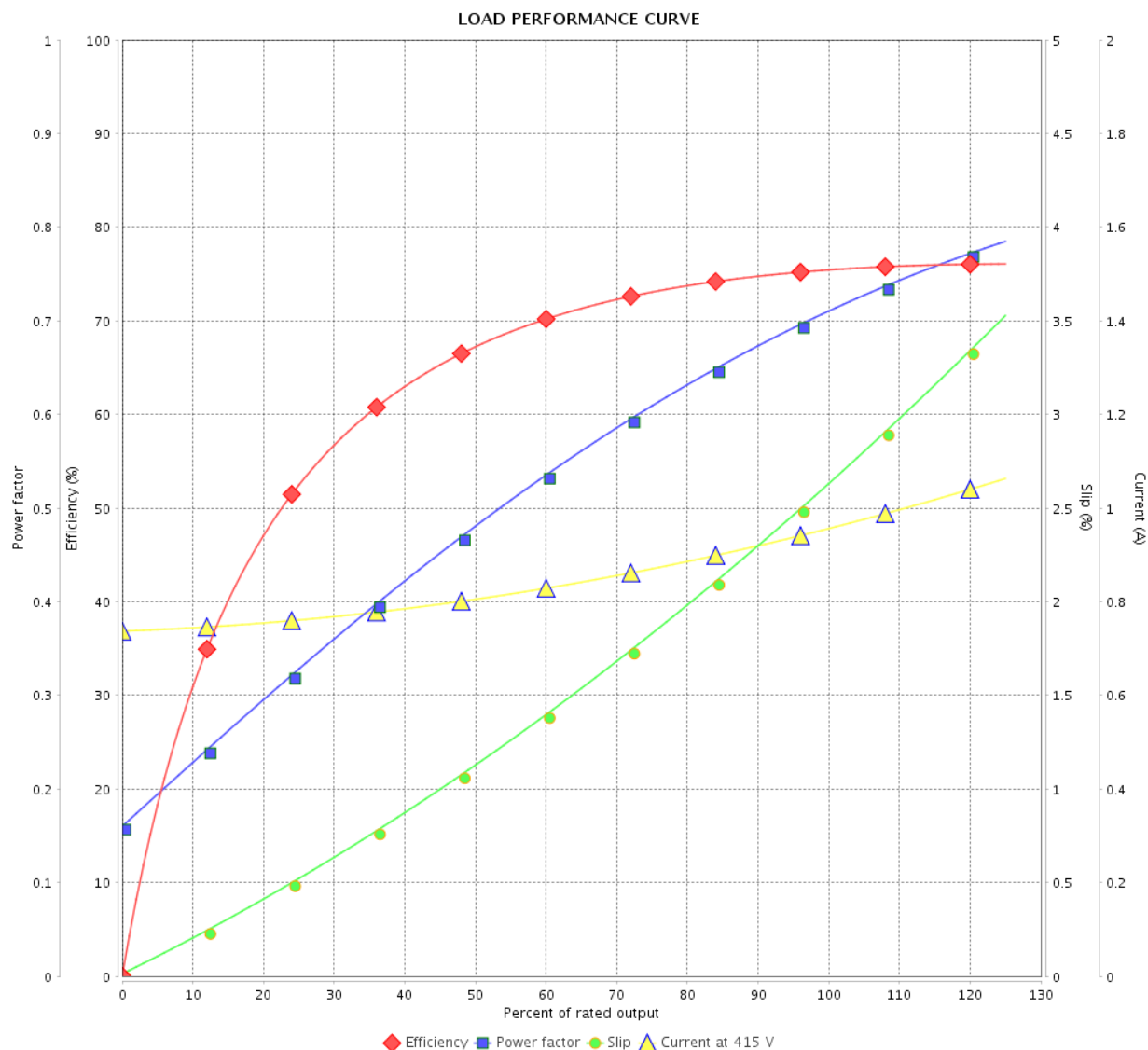
LOAD PERFORMANCE CURVE

Three Phase Induction Motor - Squirrel Cage



Customer :

Product line : Standard Efficiency Three-Phase Product code : 12630184

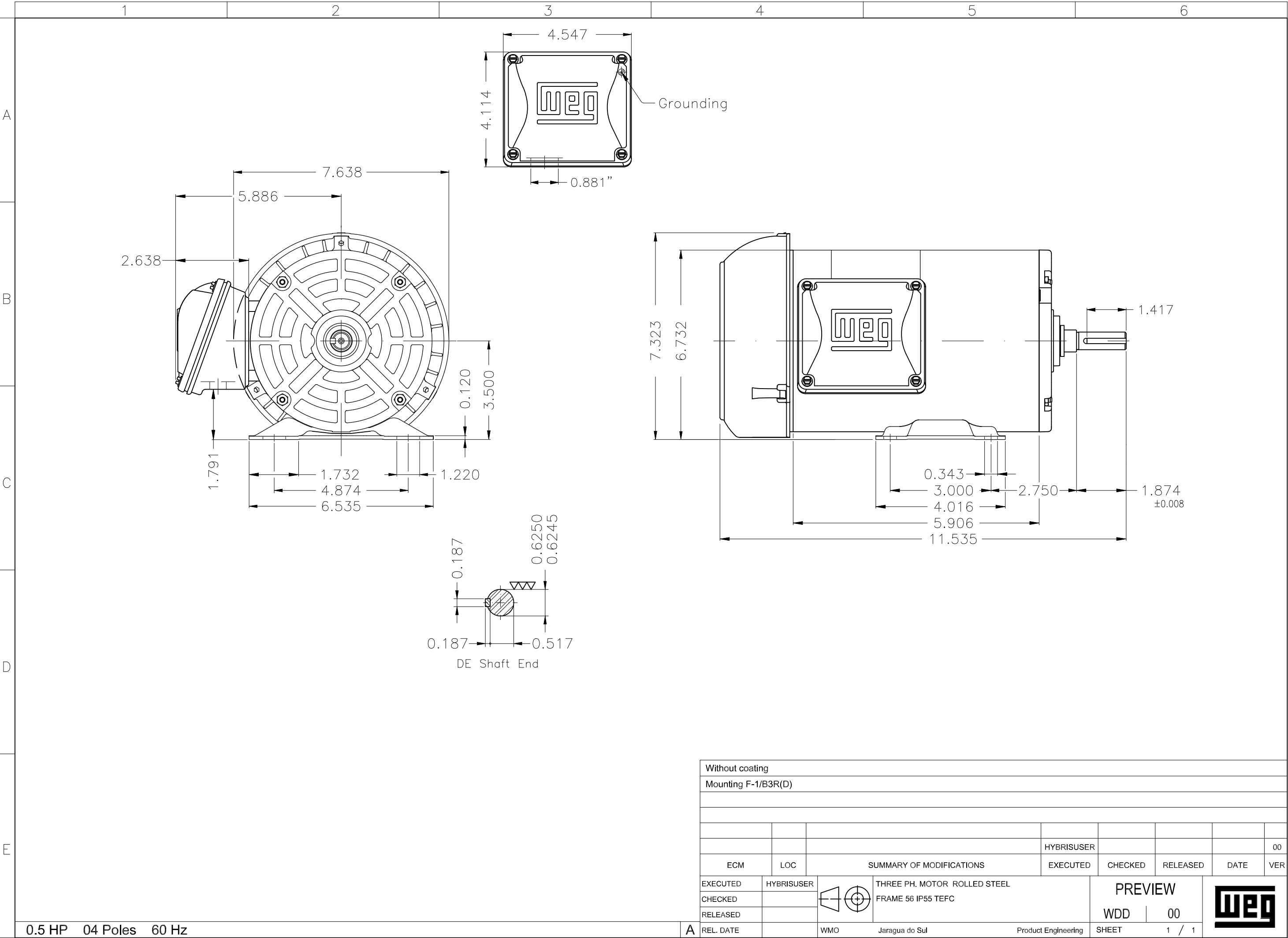




Performance : 415 V 50 Hz 4P

Rated current : 0.962 A
 LRC : 6.3
 Rated torque : 0.249 kgfm
 Locked rotor torque : 220 %
 Breakdown torque : 310 %
 Rated speed : 1460 rpm

Moment of inertia (J) : 0.0025 kgm²
 Duty cycle : Cont.(S1)
 Insulation class : F
 Service factor : 1.15
 Temperature rise : 80 K

Rev.	Changes Summary		Performed	Checked	Date
Performed by				Page	Revision
Checked by				4 / 4	
Date					



Without coating									
Mounting F-1/B3R(D)									
						HYBRISUSER			00
ECM	LOC	SUMMARY OF MODIFICATIONS				EXECUTED	CHECKED	RELEASED	DATE VER
EXECUTED	HYBRISUSER	 THREE PH. MOTOR ROLLED STEEL FRAME 56 IP55 TEFC				PREVIEW			
CHECKED									
RELEASED									
REL. DATE									
		WMO	Jaragua do Sul	Product Engineering	SHEET	1 / 1			