

DATA SHEET

Three Phase Induction Motor - Squirrel Cage



Customer :

Product line : Standard Efficiency Three-Phase Product code : 13484072

Frame	: W56	Cooling method	: IC411 - TEFC
Insulation class	: F	Mounting	: F-1
Duty cycle	: Cont.(S1)	Rotation ¹	: Both (CW and CCW)
Ambient temperature	: -20°C to +40°C	Starting method	: Direct On Line
Altitude	: 1000 m.a.s.l.	Approx. weight ³	: 7.2 kg
Protection degree	: IP55	Moment of inertia (J)	: 0.0006 kgm ²

Output [HP]	0.5	0.5	0.5
Poles	2	2	2
Frequency [Hz]	60	50	50
Rated voltage [V]	208-230/460	190/380	220/415
Rated current [A]	1.89-1.71/0.854	1.98/0.990	1.84/0.975
L. R. Amperes [A]	11.9-10.8/5.38	9.50/4.75	9.93/5.27
LRC [A]	6.3x(Code K)	4.8x(Code G)	5.4x(Code J)
No load current [A]	0.933-1.08/0.541	1.05/0.526	1.23/0.654
Rated speed [RPM]	3400	2730	2785
Slip [%]	5.56	9.00	7.17
Rated torque [kgfm]	0.107	0.133	0.130
Locked rotor torque [%]	290	220	280
Breakdown torque [%]	290	220	260
Service factor		1.00	1.00
Temperature rise	80 K	105 K	105 K
Locked rotor time	36s (cold) 20s (hot)	32s (cold) 18s (hot)	30s (cold) 17s (hot)
Noise level ²	65.0 dB(A)	64.0 dB(A)	64.0 dB(A)
Efficiency (%)	25%		
	50%	59.5	62.0
	75%	66.0	66.0
	100%	68.0	66.0
Power Factor	25%		
	50%	0.61	0.68
	75%	0.73	0.79
	100%	0.80	0.86

	<u>Drive end</u>	<u>Non drive end</u>	Foundation loads
Bearing type	: 6203 ZZ	6202 ZZ	Max. traction : 7 kgf
Sealing	: V'Ring	V'Ring	Max. compression : 14 kgf
Lubrication interval	: -	-	
Lubricant amount	: -	-	
Lubricant type	: Mobil Polyrex EM		

Notes
USABLE @208V SF 1.00

This revision replaces and cancel the previous one, which must be eliminated.

- (1) Looking the motor from the shaft end.
- (2) Measured at 1m and with tolerance of +3dB(A).
- (3) Approximate weight subject to changes after manufacturing process.
- (4) At 100% of full load.

These are average values based on tests with sinusoidal power supply, subject to the tolerances stipulated in NEMA MG-1.

Rev.	Changes Summary	Performed	Checked	Date
Performed by				
Checked by				
Date	11/05/2022			
			Page	Revision
			1 / 4	

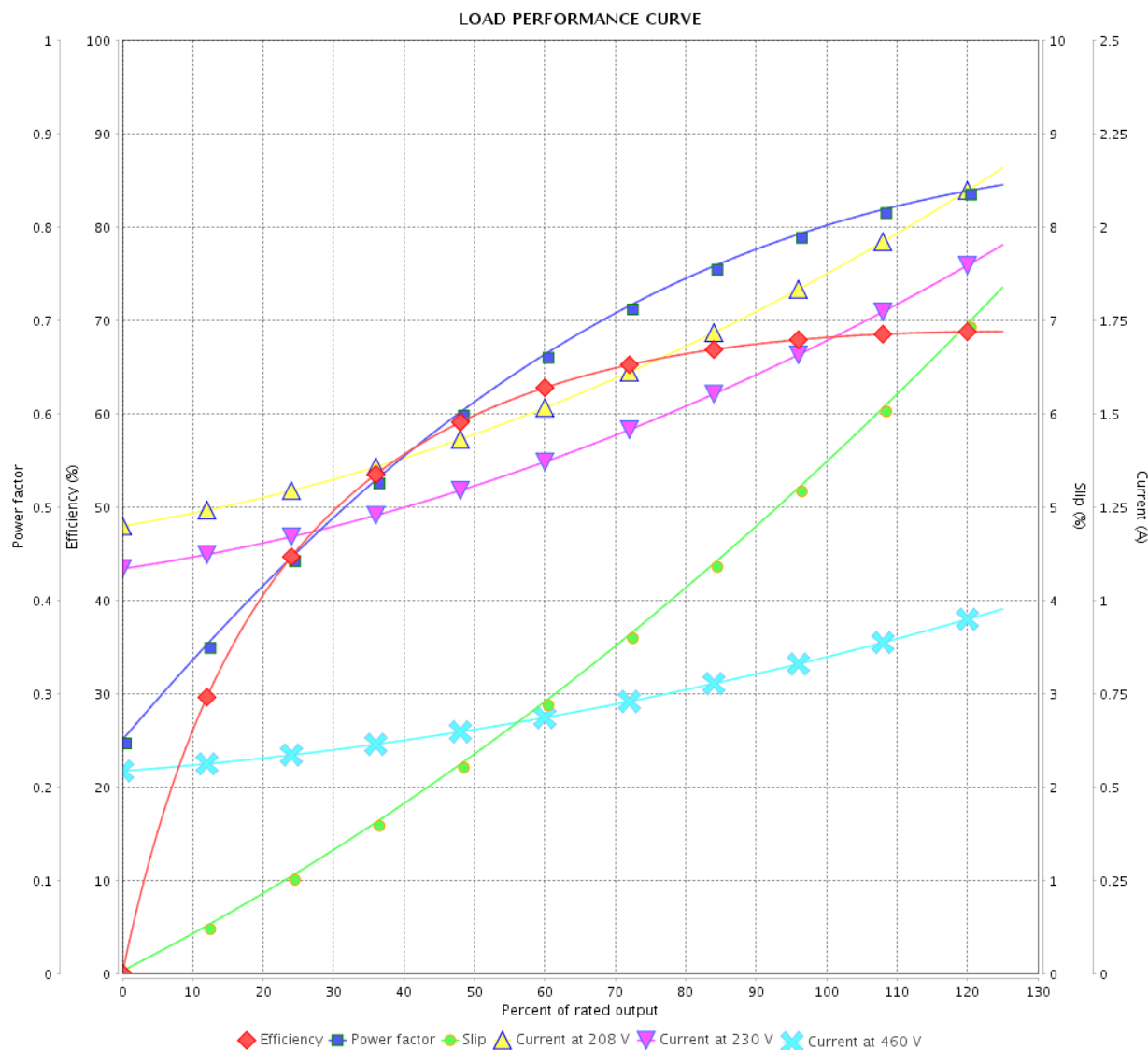
LOAD PERFORMANCE CURVE

Three Phase Induction Motor - Squirrel Cage



Customer :

Product line : Standard Efficiency Three-Phase Product code : 13484072



Performance : 208-230/460 V 60 Hz 2P

Rated current : 1.89-1.71/0.854 A
 LRC : 6.3
 Rated torque : 0.107 kgfm
 Locked rotor torque : 290 %
 Breakdown torque : 290 %
 Rated speed : 3400 rpm

Moment of inertia (J) : 0.0006 kgm²
 Duty cycle : Cont.(S1)
 Insulation class : F
 Service factor :
 Temperature rise : 80 K

Rev.	Changes Summary	Performed	Checked	Date
Performed by		Page 2 / 4Revision		
Checked by				
Date	11/05/2022			

LOAD PERFORMANCE CURVE

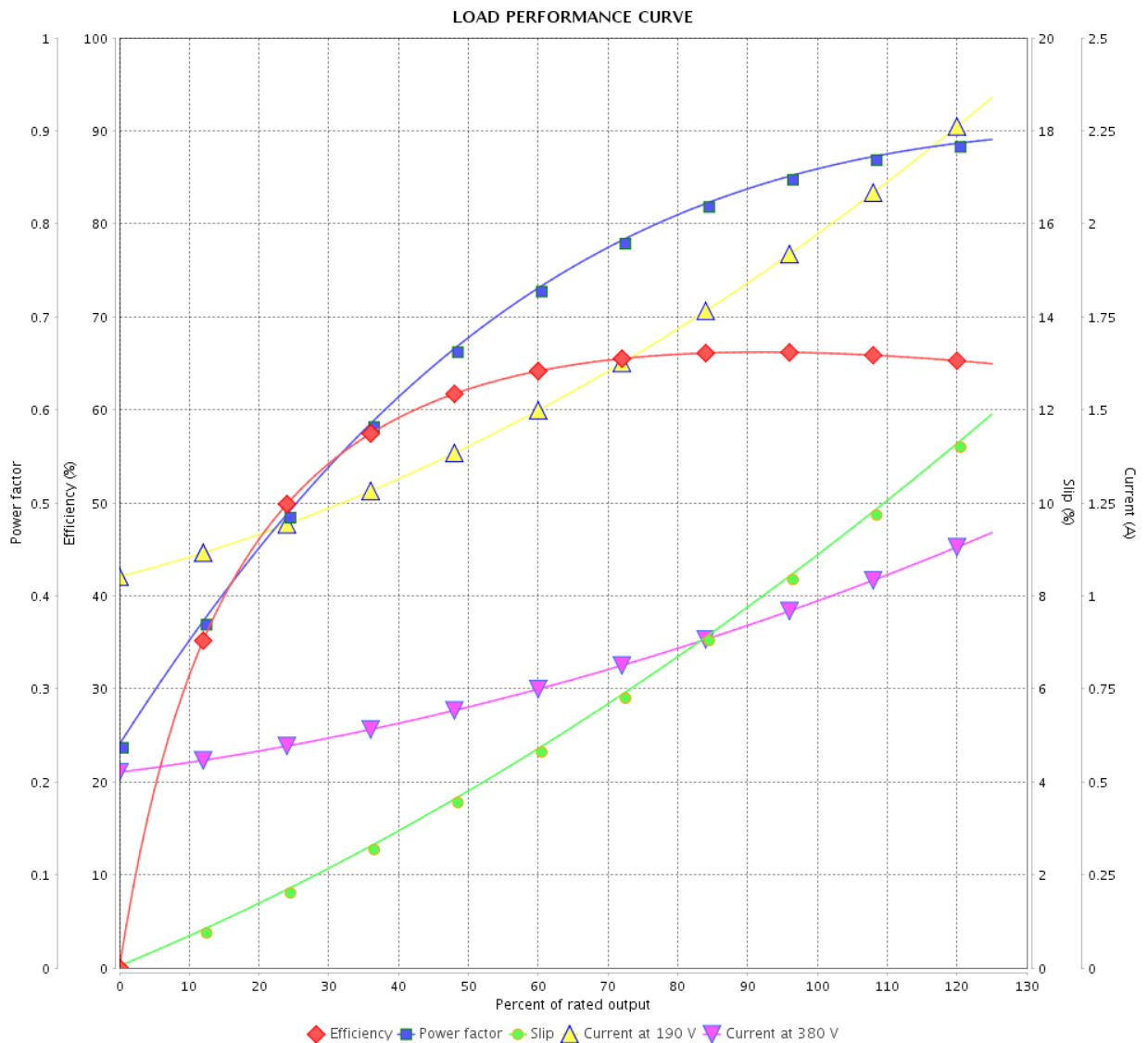
Three Phase Induction Motor - Squirrel Cage



Customer :

Product line : Standard Efficiency Three-Phase

Product code : 13484072



Performance : 190/380 V 50 Hz 2P

Rated current : 1.98/0.990 A
 LRC : 4.8
 Rated torque : 0.133 kgfm
 Locked rotor torque : 220 %
 Breakdown torque : 220 %
 Rated speed : 2730 rpm

Moment of inertia (J) : 0.0006 kgm²
 Duty cycle : Cont.(S1)
 Insulation class : F
 Service factor : 1.00
 Temperature rise : 105 K

Rev.	Changes Summary	Performed	Checked	Date
Performed by		Page 3 / 4Revision		
Checked by				
Date	11/05/2022			

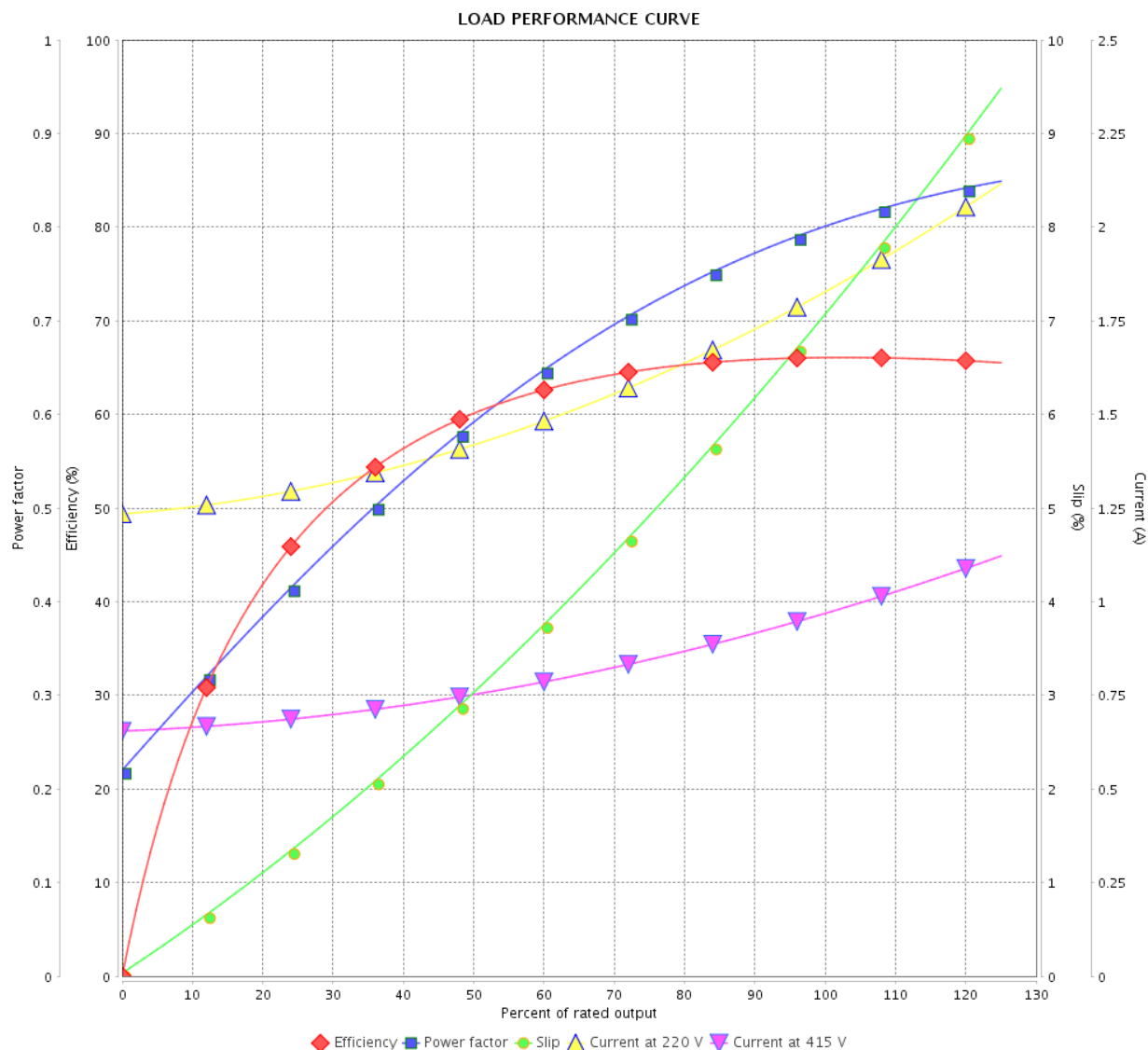
LOAD PERFORMANCE CURVE

Three Phase Induction Motor - Squirrel Cage



Customer :

Product line : Standard Efficiency Three-Phase Product code : 13484072

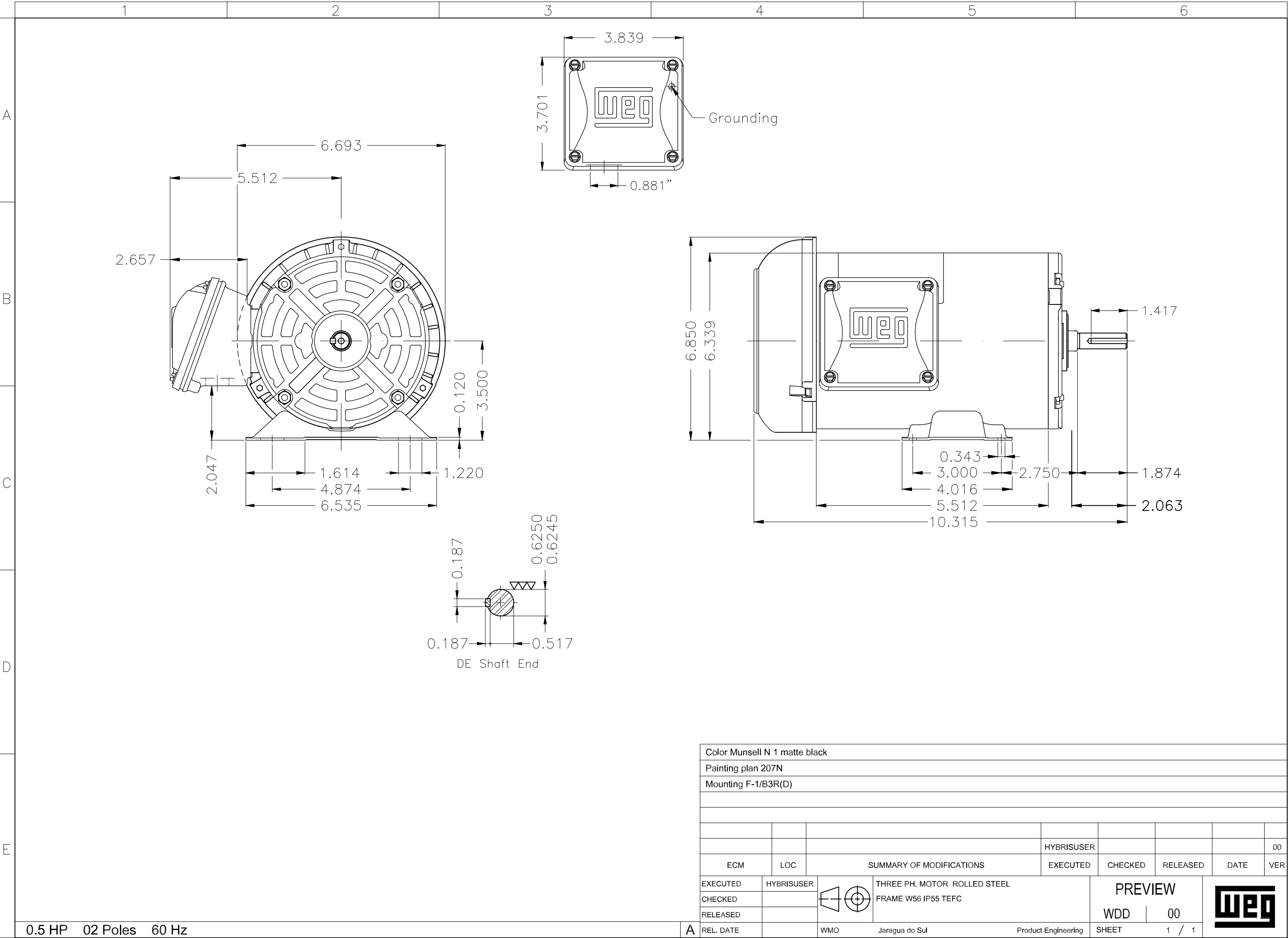


Performance : 220/415 V 50 Hz 2P

Rated current : 1.84/0.975 A
 LRC : 5.4
 Rated torque : 0.130 kgfm
 Locked rotor torque : 280 %
 Breakdown torque : 260 %
 Rated speed : 2785 rpm

Moment of inertia (J) : 0.0006 kgm²
 Duty cycle : Cont.(S1)
 Insulation class : F
 Service factor : 1.00
 Temperature rise : 105 K

Rev.	Changes Summary		Performed	Checked	Date
Performed by				Page	Revision
Checked by				4 / 4	
Date					



A

B

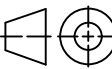

C

D

E

Dimensions in inches

XME A3

Color Munsell N 1 matte black									
Painting plan 207N									
Mounting F-1/B3R(D)									
				HYBRISUSER					00
ECM	LOC	SUMMARY OF MODIFICATIONS			EXECUTED	CHECKED	RELEASED	DATE	VER
EXECUTED	HYBRISUSER	 THREE PH. MOTOR ROLLED STEEL FRAME W56 IP55 TEFC			PREVIEW				
CHECKED									
RELEASED									
REL. DATE		WMO	Jaragua do Sul	Product Engineering	SHEET	1 / 1			

0.5 HP 02 Poles 60 Hz

A