

DATA SHEET

Single Phase Induction Motor - Squirrel Cage



Customer :				
Product line : Single-Phase	Product code : 13383422			
Frame : W56 Insulation class : F Duty cycle : Cont.(S1) Ambient temperature : -20°C to +40°C Altitude : 1000 m.a.s.l. Protection degree : IP55 Design : N	Cooling method : IC411 - TEFC Mounting : F-1 Rotation ¹ : Both (CW and CCW) Starting method : Direct On Line Approx. weight ² : 9.6 kg Moment of inertia (J) : 0.0020 kgm ²			
Output [HP]	0.5			
Poles	4			
Frequency [Hz]	60			
Rated voltage [V]	115/208-230			
Rated current [A]	8.00/4.42-4.00			
L. R. Amperes [A]	45.6/25.2-22.8			
LRC [A]	5.7x(Code M)			
No load current [A]	6.60/2.85-3.30			
Rated speed [RPM]	1730			
Slip [%]	3.89			
Rated torque [kgfm]	0.210			
Locked rotor torque [%]	320			
Breakdown torque [%]	270			
Service factor				
Temperature rise	80 K			
Locked rotor time	18s (cold) 10s (hot)			
Noise level ²	52.0 dB(A)			
Efficiency (%)	25%			
	50%			
	75%			
	100%			
Power Factor	25%			
	50%			
	75%			
	100%			
Bearing type : <u>Drive end</u> 6203 ZZ <u>Non drive end</u> 6202 ZZ Sealing : V'Ring V'Ring Lubrication interval : - - Lubricant amount : - - Lubricant type : Mobil Polyrex EM	Foundation loads Max. traction : 13 kgf Max. compression : 22 kgf			
Notes				
This revision replaces and cancel the previous one, which must be eliminated. (1) Looking the motor from the shaft end. (2) Measured at 1m and with tolerance of +3dB(A). (3) Approximate weight subject to changes after manufacturing process. (4) At 100% of full load.	These are average values based on tests with sinusoidal power supply, subject to the tolerances stipulated in NEMA MG-1.			
Rev.	Changes Summary	Performed	Checked	Date
Performed by				
Checked by			Page	Revision
Date	11/05/2022		1 / 2	

LOAD PERFORMANCE CURVE

Single Phase Induction Motor - Squirrel Cage

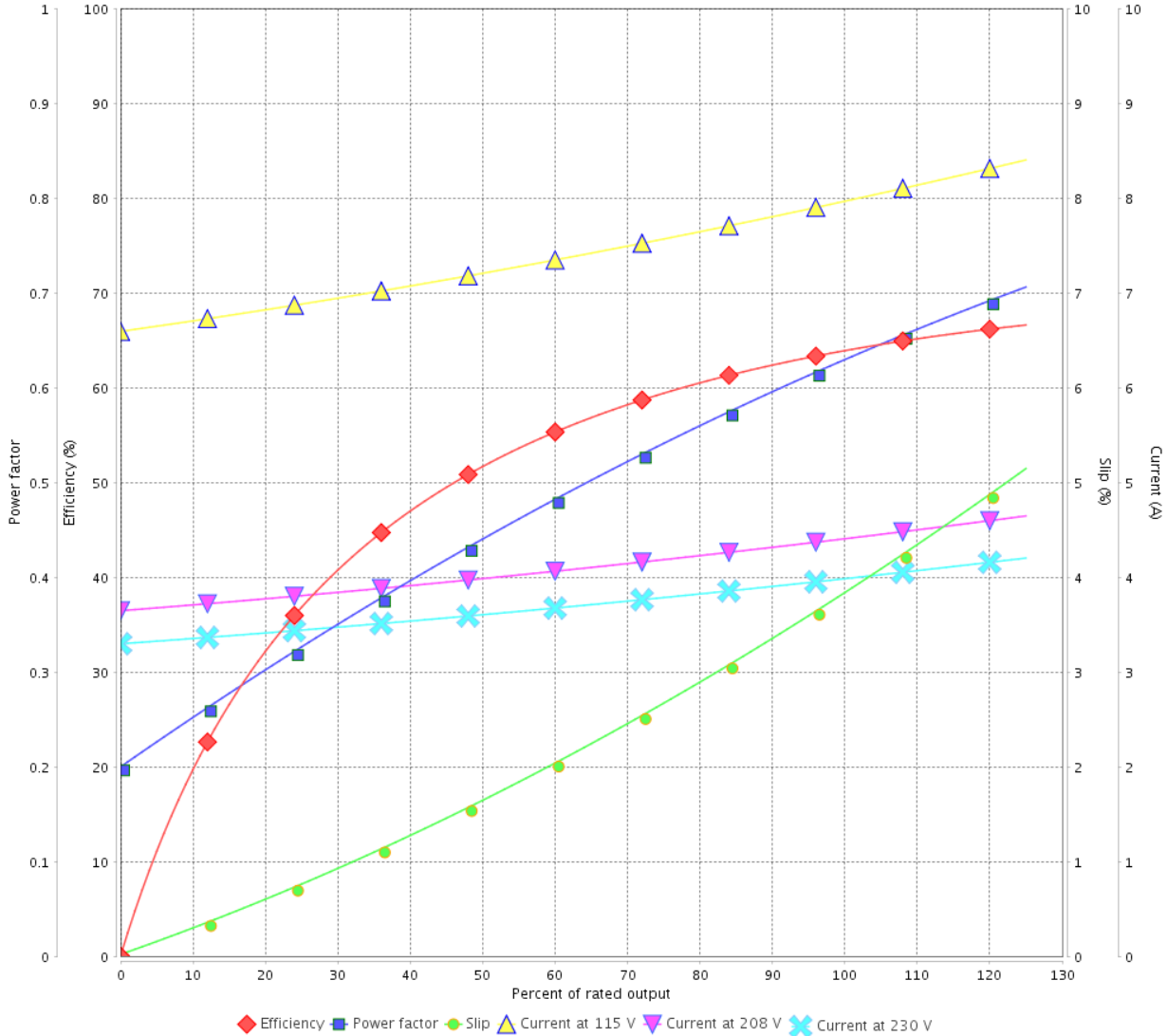


Customer :

Product line : Single-Phase

Product code : 13383422

LOAD PERFORMANCE CURVE



Performance : 115/208-230 V 60 Hz 4P

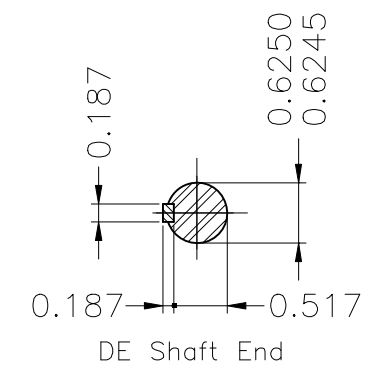
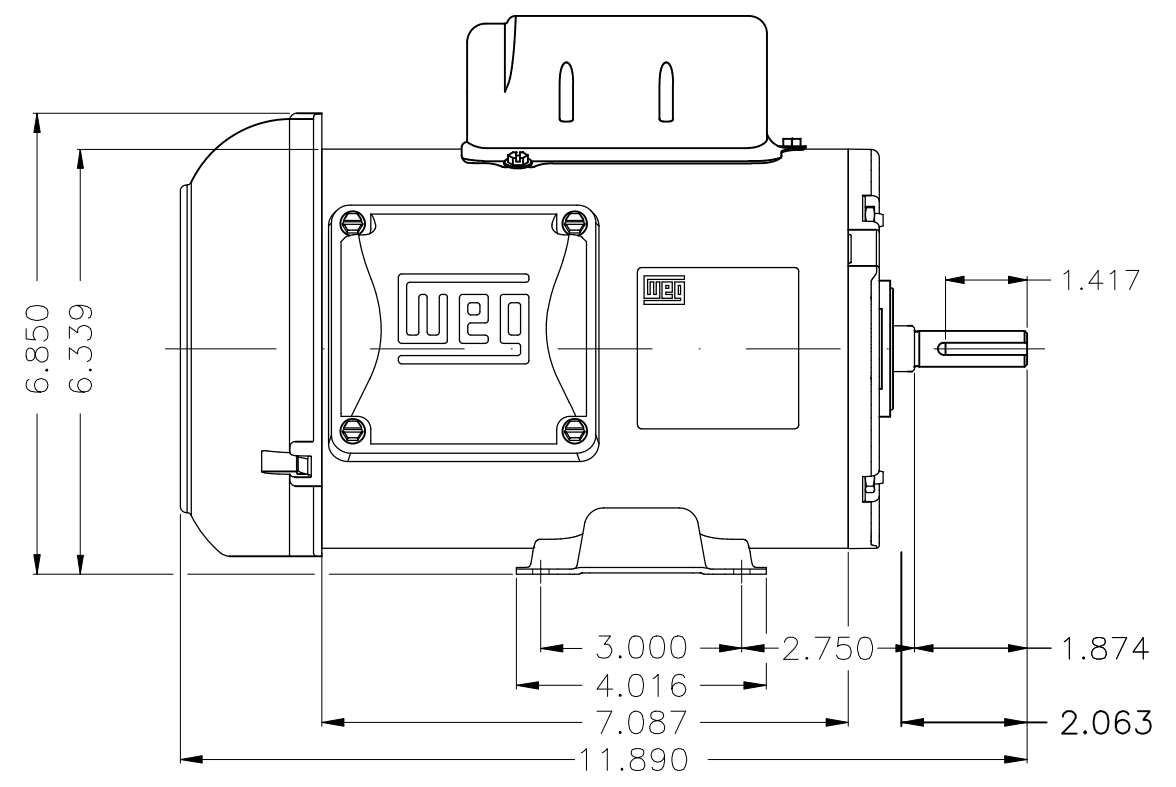
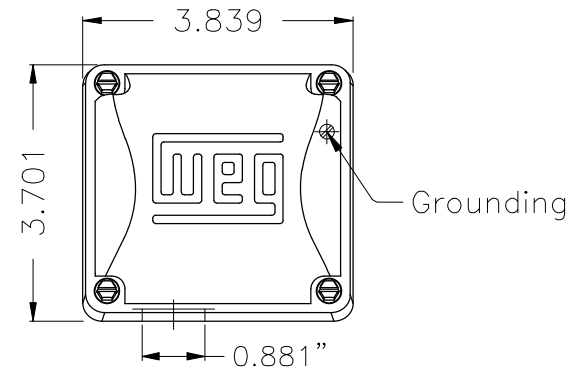
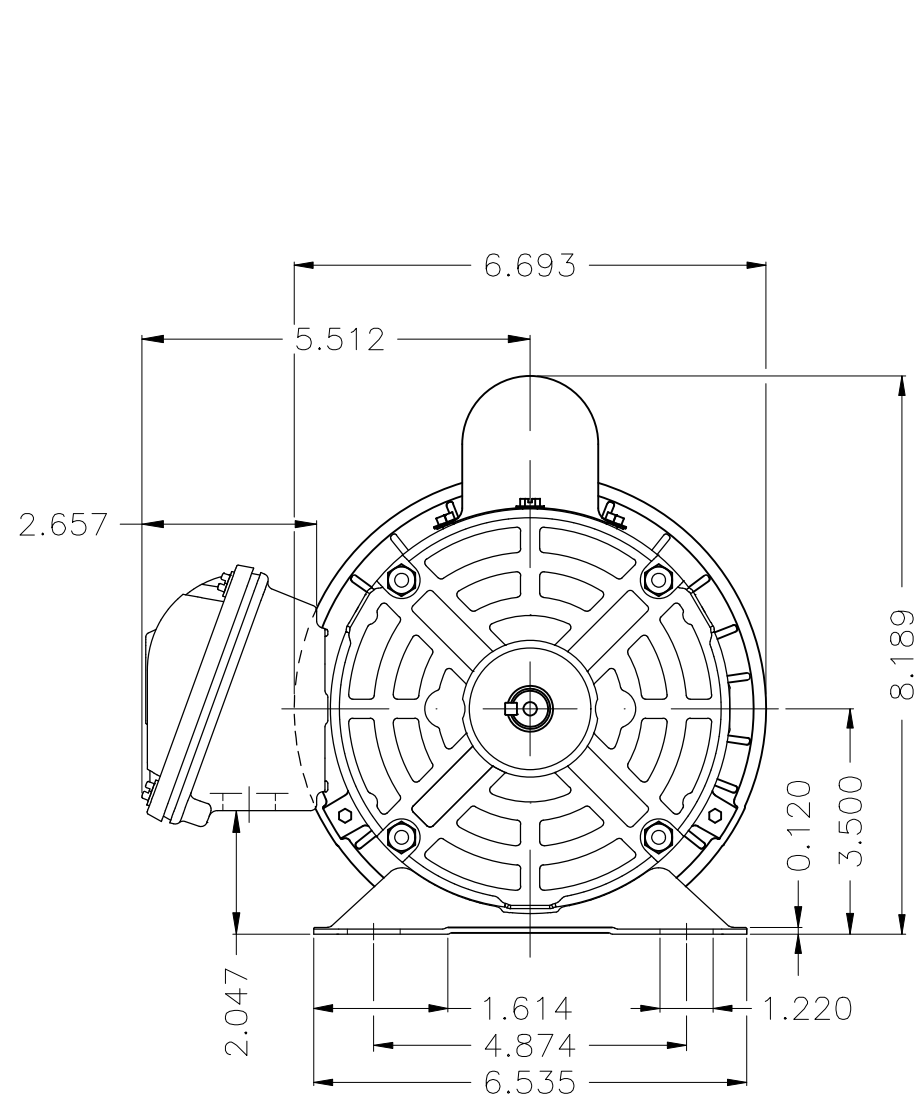
Rated current : 8.00/4.42-4.00 A
 LRC : 5.7
 Rated torque : 0.210 kgfm
 Locked rotor torque : 320 %
 Breakdown torque : 270 %
 Rated speed : 1730 rpm


Moment of inertia (J) : 0.0020 kgm²
 Duty cycle : Cont.(S1)
 Insulation class : F
 Service factor :
 Temperature rise : 80 K
 Design : N

Rev.	Changes Summary	Performed	Checked	Date
Performed by			Page 2 / 2	Revision
Checked by				
Date	11/05/2022			

1 2 3 4 5 6

A
B
C
D
E



Design N									
Color Munsell N 1 matte black									
Painting plan 207N									
Mounting F-1/B3R(D)									
						00			
ECM	LOC	SUMMARY OF MODIFICATIONS			EXECUTED	CHECKED	RELEASED	DATE	VER
EXECUTED	HYBRISUSER	SINGLE PH. MOTOR ROLLED STEEL				PREVIEW			
CHECKED		FRAME W56 IP55 TEFC				WDD	00		
RELEASED						SHEET	1 / 1		
REL. DATE		WMO	Jaragua do Sul	Product Engineering					

0.5 HP 04 Poles 60 Hz