

# DATA SHEET



## Single Phase Induction Motor - Squirrel Cage

Customer :

Product line : General Single-Phase Product code : 10022074

Frame	: B56	Locked rotor time	: 10s (cold) 6s (hot)
Output	: 0.5 HP (0.37 kW)	Temperature rise	: 80 K
Poles	: 4	Duty cycle	: Cont.(S1)
Frequency	: 60 Hz	Ambient temperature	: -20°C to +40°C
Rated voltage	: 115/208-230 V	Altitude	: 1000 m.a.s.l.
Rated current	: 7.44/3.60-3.72 A	Protection degree	: IP55
L. R. Amperes	: 43.2/20.9-21.6 A	Cooling method	: IC411 - TEFC
LRC	: 5.8x(Code L)	Mounting	: F-1
No load current	: 6.00/2.59-3.00 A	Rotation <sup>1</sup>	: Both (CW and CCW)
Rated speed	: 1750 rpm	Noise level <sup>2</sup>	: 55.0 dB(A)
Slip	: 2.78 %	Starting method	: Direct On Line
Rated torque	: 0.207 kgfm	Approx. weight <sup>3</sup>	: 11.1 kg
Locked rotor torque	: 290 %		
Breakdown torque	: 270 %		
Insulation class	: B		
Service factor	: 1.15		
Moment of inertia (J)	: 0.0034 kgm <sup>2</sup>		

Output	50%	75%	100%	Foundation loads	
Efficiency (%)	56.0	64.0	66.5	Max. traction	: 12 kgf
Power Factor	0.46	0.57	0.65	Max. compression	: 23 kgf

	<u>Drive end</u>	<u>Non drive end</u>
Bearing type	: 6203 ZZ	: 6202 ZZ
Sealing	: V'Ring	: V'Ring
Lubrication interval	: -	: -
Lubricant amount	: -	: -
Lubricant type	: Mobil Polyrex EM	

### Notes

This revision replaces and cancel the previous one, which must be eliminated.

- (1) Looking the motor from the shaft end.
- (2) Measured at 1m and with tolerance of +3dB(A).
- (3) Approximate weight subject to changes after manufacturing process.
- (4) At 100% of full load.

These are average values based on tests with sinusoidal power supply, subject to the tolerances stipulated in NEMA MG-1.

Rev.	Changes Summary	Performed	Checked	Date
Performed by				
Checked by			Page	Revision
Date	26/10/2024		1 / 2	

# LOAD PERFORMANCE CURVE

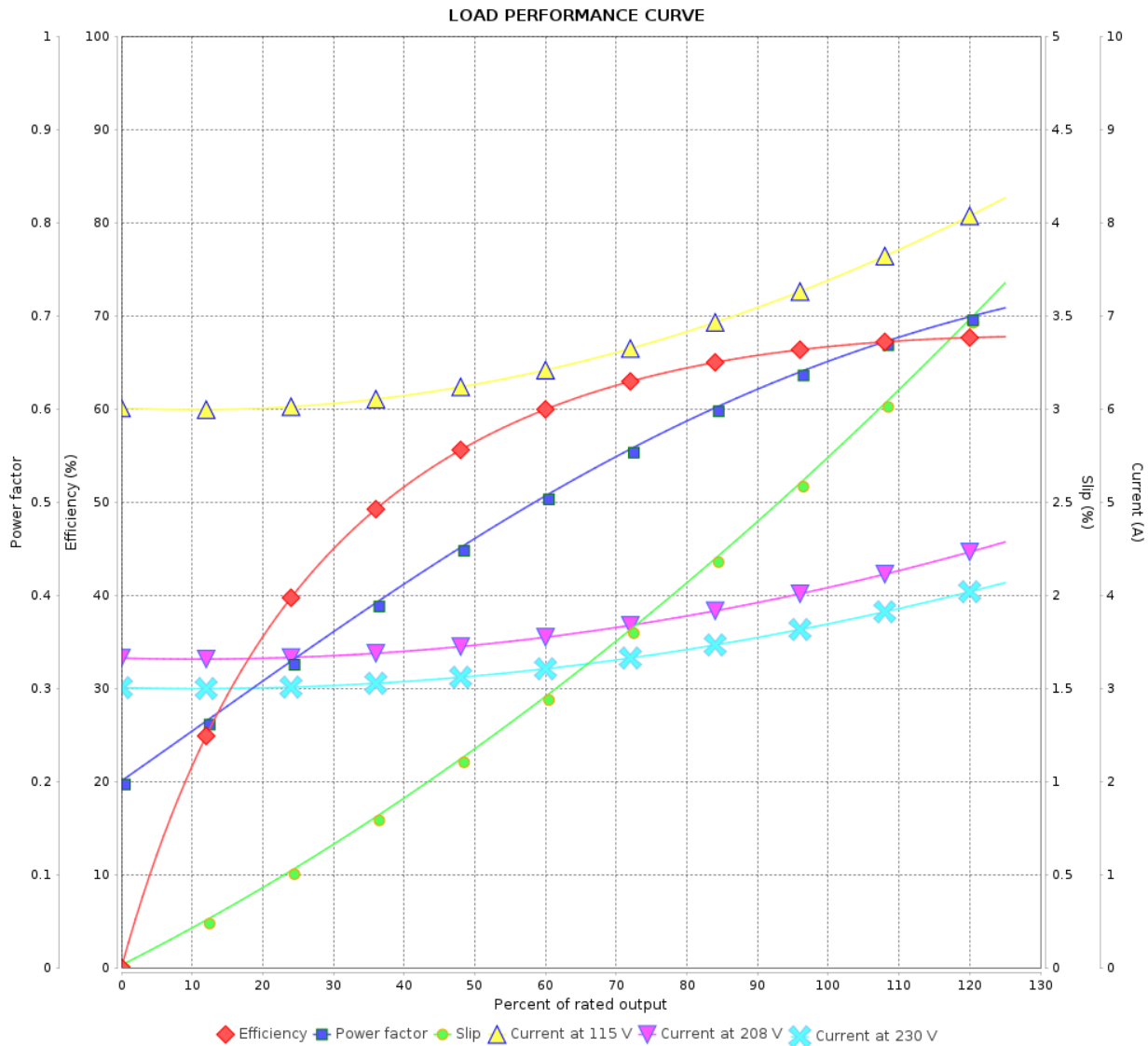
Single Phase Induction Motor - Squirrel Cage



Customer :

Product line : General Single-Phase

Product code : 10022074



Performance : 115/208-230 V 60 Hz 4P

Rated current : 7.44/3.60-3.72 A  
 LRC : 5.8  
 Rated torque : 0.207 kgfm  
 Locked rotor torque : 290 %  
 Breakdown torque : 270 %  
 Rated speed : 1750 rpm

Moment of inertia (J) : 0.0034 kgm<sup>2</sup>  
 Duty cycle : Cont.(S1)  
 Insulation class : B  
 Service factor :  
 Temperature rise : 80 K

Rev.	Changes Summary	Performed	Checked	Date
Performed by			Page	Revision
Checked by				
Date				

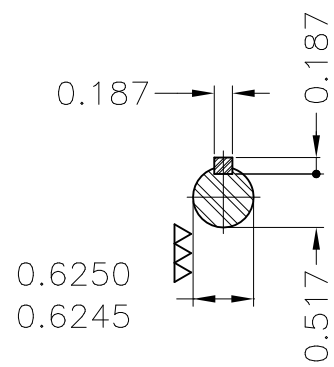
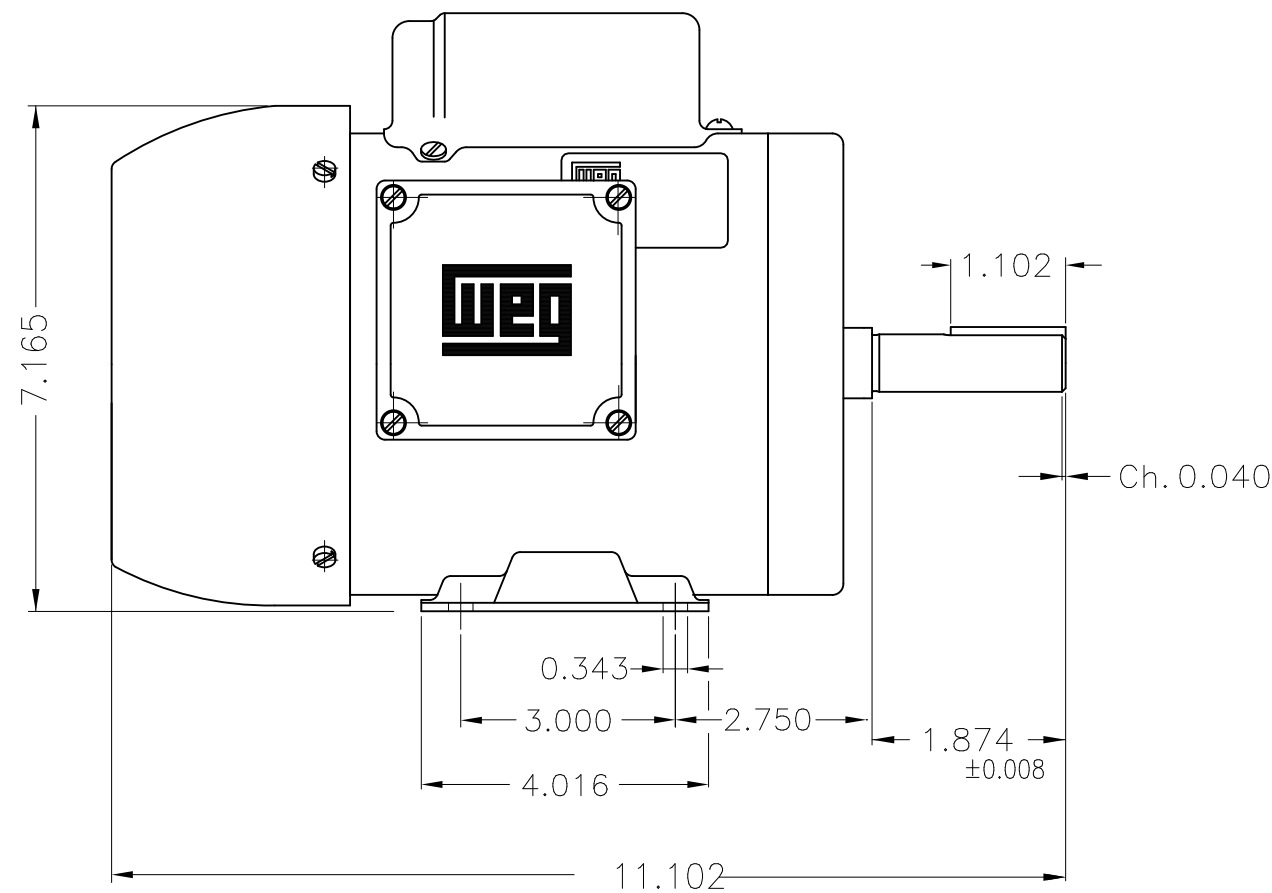
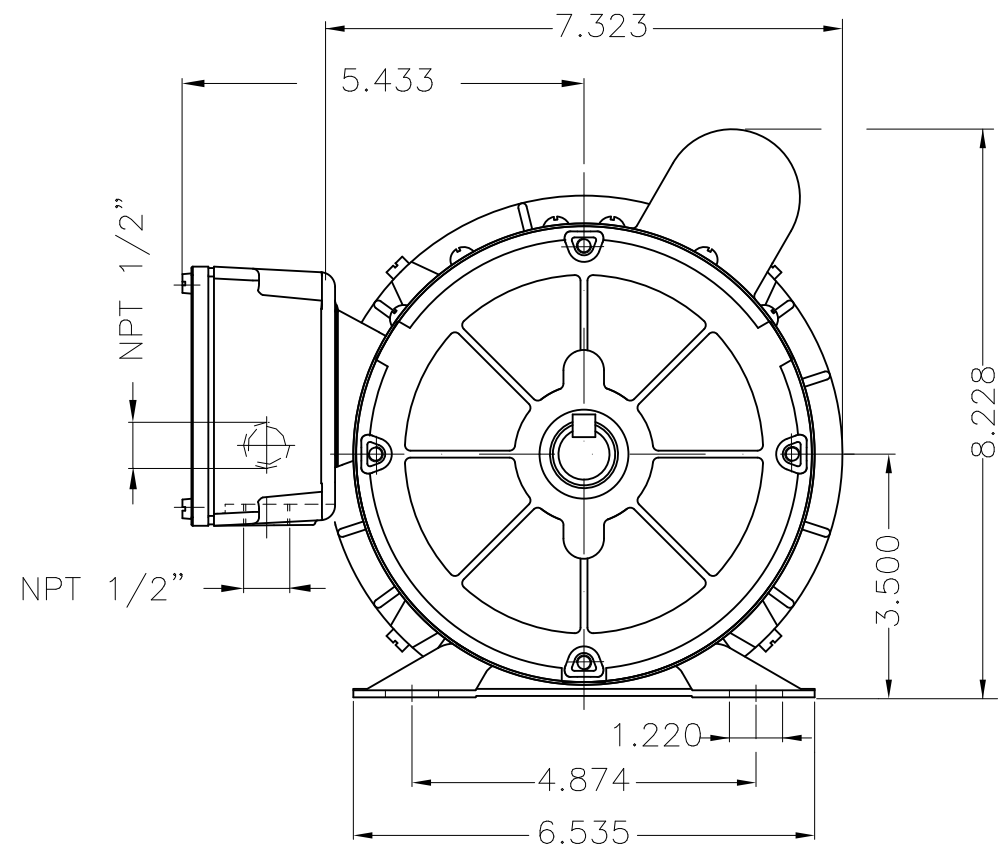
A

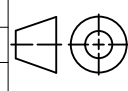

B

C

D

E



Mounting B3R(D)											
							HYBRISUSER			00	
ECM	LOC	SUMMARY OF MODIFICATIONS					EXECUTED	CHECKED	RELEASED	DATE	VER
EXECUTED	HYBRISUSER	 SINGLE PH. MOTOR GENERAL FRAME B56 IP55 TEFC					PREVIEW				
CHECKED							WDD				00
RELEASED							SHEET				1 / 1
REL. DATE		WMO	Jaragua do Sul	Product Engineering							

1/2 HP 04 Poles 60 Hz

A