

# DATA SHEET

## Single Phase Induction Motor - Squirrel Cage



Customer	:			
Product line	: Single-Phase	Product code : 13383421		
Frame	: W56	Cooling method : IC411 - TEFC		
Insulation class	: F	Mounting : F-1		
Duty cycle	: Cont.(S1)	Rotation <sup>1</sup> : Both (CW and CCW)		
Ambient temperature	: -20°C to +40°C	Starting method : Direct On Line		
Altitude	: 1000 m.a.s.l.	Approx. weight <sup>3</sup> : 8.6 kg		
Protection degree	: IP55	Moment of inertia (J) : 0.0017 kgm <sup>2</sup>		
Design	: N			
Output [HP]		0.33		
Poles		4		
Frequency [Hz]		60		
Rated voltage [V]		115/208-230		
Rated current [A]		6.00/3.32-3.00		
L. R. Amperes [A]		33.6/18.6-16.8		
LRC [A]		5.6x(Code N)		
No load current [A]		5.40/2.33-2.70		
Rated speed [RPM]		1735		
Slip [%]		3.61		
Rated torque [kgfm]		0.138		
Locked rotor torque [%]		320		
Breakdown torque [%]		280		
Service factor				
Temperature rise		80 K		
Locked rotor time		21s (cold) 12s (hot)		
Noise level <sup>2</sup>		52.0 dB(A)		
Efficiency (%)	25%			
	50%	46.0		
	75%	55.0		
	100%	61.0		
Power Factor	25%			
	50%	0.42		
	75%	0.51		
	100%	0.59		
Bearing type	: Drive end : 6203 ZZ Non drive end : 6202 ZZ	Foundation loads		
Sealing	: V'Ring V'Ring	Max. traction : 8 kgf		
Lubrication interval	: - -	Max. compression : 16 kgf		
Lubricant amount	: - -			
Lubricant type	: Mobil Polyrex EM			
Notes				
<p>This revision replaces and cancel the previous one, which must be eliminated.</p> <p>(1) Looking the motor from the shaft end.</p> <p>(2) Measured at 1m and with tolerance of +3dB(A).</p> <p>(3) Approximate weight subject to changes after manufacturing process.</p> <p>(4) At 100% of full load.</p>		<p>These are average values based on tests with sinusoidal power supply, subject to the tolerances stipulated in NEMA MG-1.</p>		
Rev.	Changes Summary	Performed	Checked	Date
Performed by				
Checked by			Page	Revision
Date	11/05/2022		1 / 2	

# LOAD PERFORMANCE CURVE

Single Phase Induction Motor - Squirrel Cage

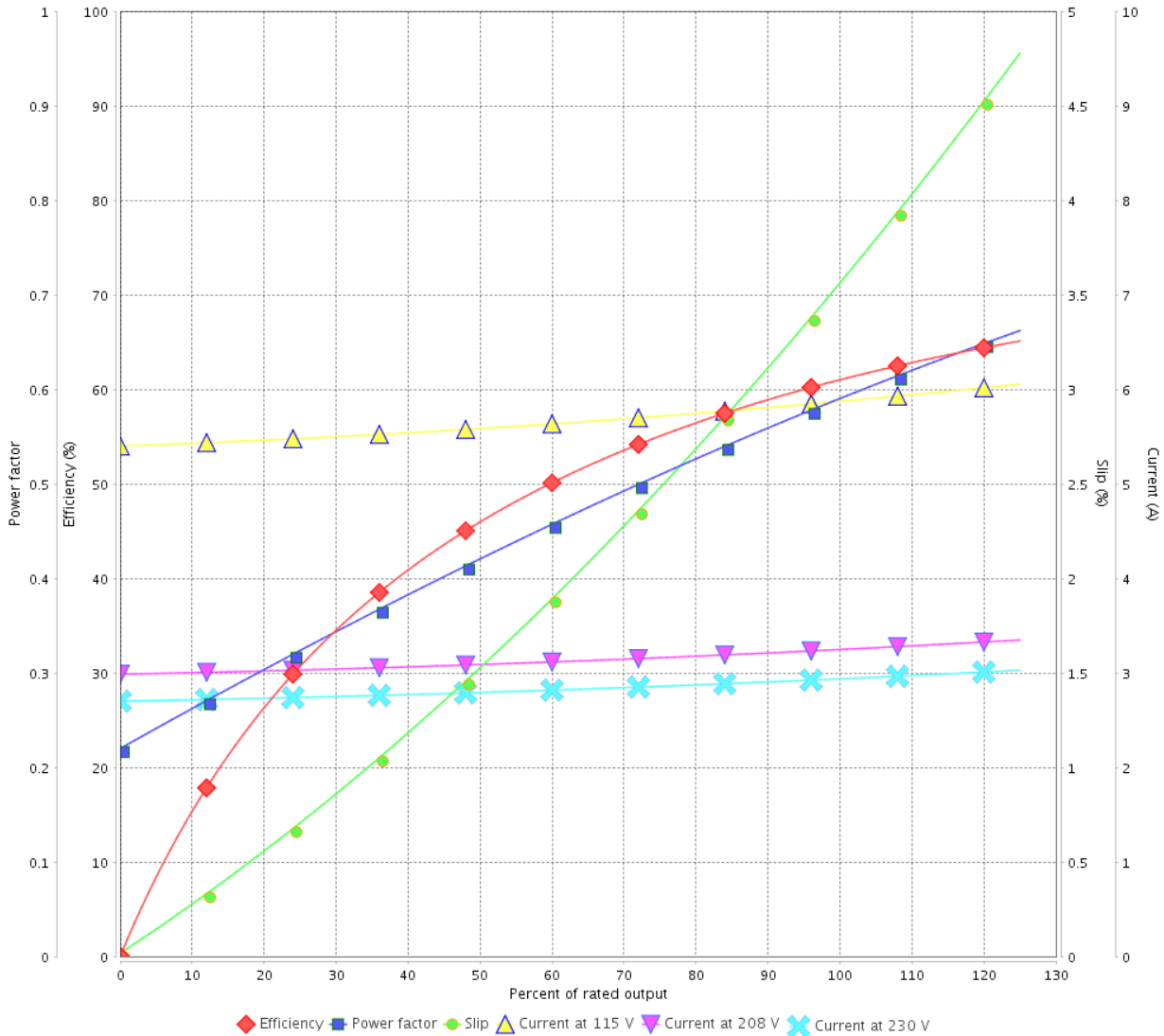


Customer :

Product line : Single-Phase

Product code : 13383421

LOAD PERFORMANCE CURVE

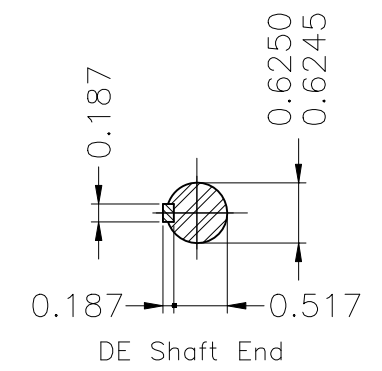
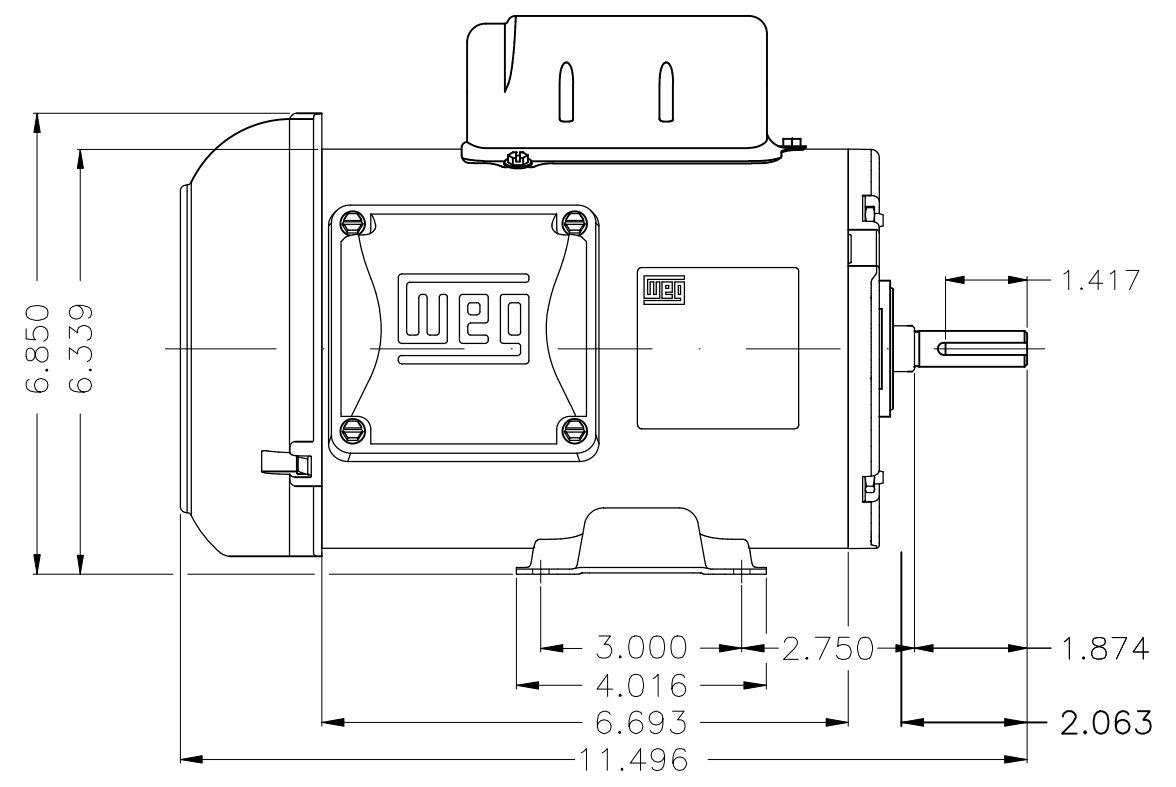
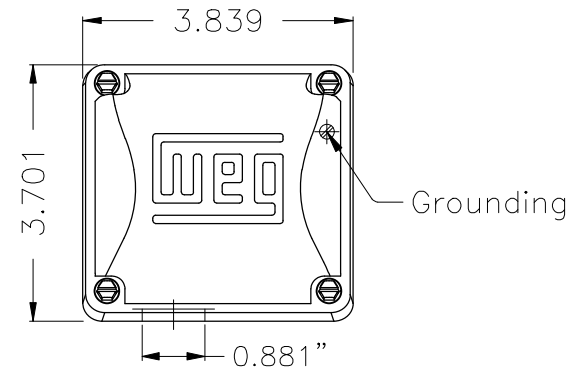
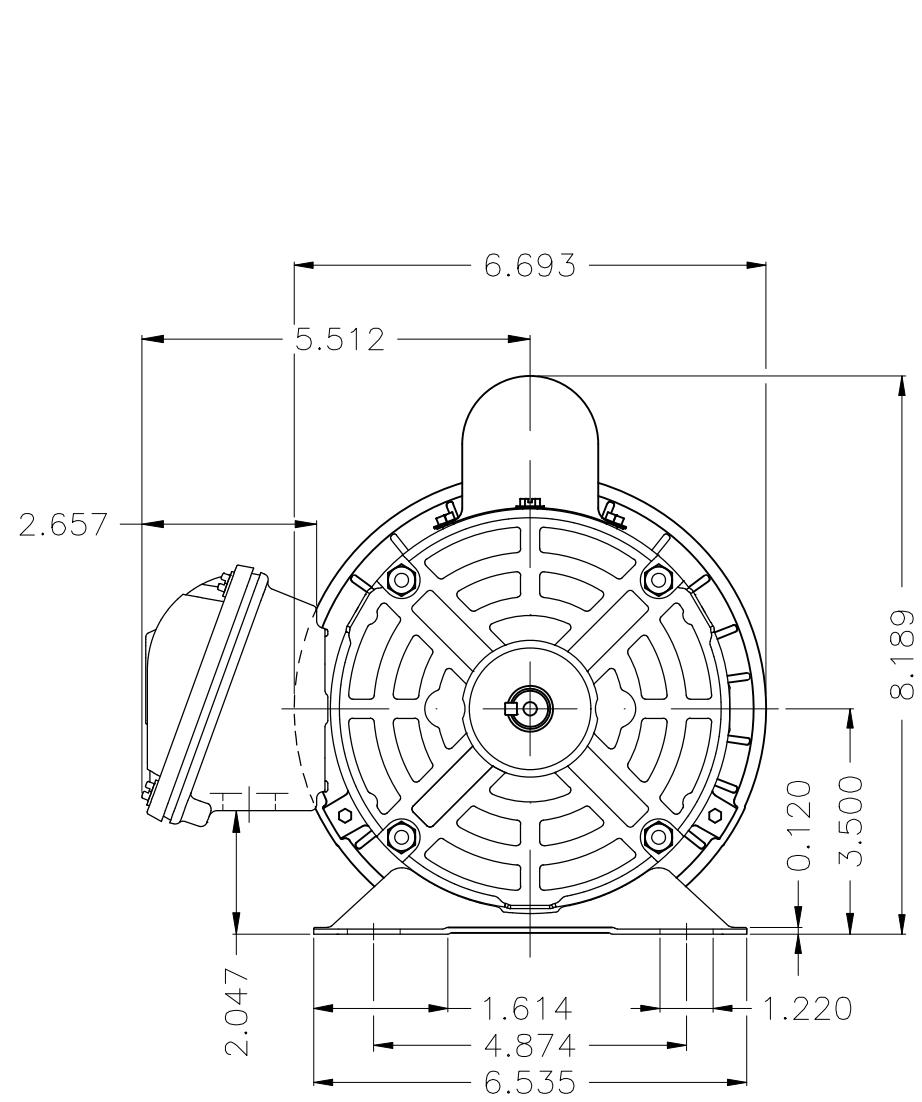


Performance : 115/208-230 V 60 Hz 4P

Rated current : 6.00/3.32-3.00 A  
 LRC : 5.6  
 Rated torque : 0.138 kgfm  
 Locked rotor torque : 320 %  
 Breakdown torque : 280 %  
 Rated speed : 1735 rpm

Moment of inertia (J) : 0.0017 kgm<sup>2</sup>  
 Duty cycle : Cont.(S1)  
 Insulation class : F  
 Service factor :  
 Temperature rise : 80 K  
 Design : N

Rev.	Changes Summary	Performed	Checked	Date
Performed by			Page 2 / 2	Revision
Checked by				
Date	11/05/2022			



Design N  
 Color Munsell N 1 matte black  
 Painting plan 207N  
 Mounting F-1/B3R(D)

			HYBRISUSER							00			
ECM	LOC	SUMMARY OF MODIFICATIONS				EXECUTED	CHECKED	RELEASED	DATE	VER			
EXECUTED	HYBRISUSER	SINGLE PH. MOTOR ROLLED STEEL FRAME W56 IP55 TEFC				PREVIEW WDD 00							
CHECKED										SHEET		1 / 1	
RELEASED													
REL. DATE		WMO	Jaragua do Sul	Product Engineering									

0.33 HP 04 Poles 60 Hz

A