

DATA SHEET

Single Phase Induction Motor - Squirrel Cage



Customer : V.J. PAMENSKY CANADA INC.

Product line : W01 - TEAO - Grain Dryer

Frame	: 182/4TZ	Cooling method	: IC418 - TEAO
Insulation class	: F	Minimum air speed over motor	: 16.8 m/s
Duty cycle	: S1	Mounting	: F-3/B3T
Ambient temperature	: -20 °C to +40 °C	Rotation ¹	: Both
Altitude	: 3280 ft	Starting method	: Direct On Line
Protection degree	: IP55	Approx. weight ³	: 83.0 lb
		Moment of inertia (J)	: 0.0000 sq.ft.lb

Output	5 HP (3.7 kW)	7.5 HP (5.5 kW)	
Poles	2	2	
Frequency	60 Hz	60 Hz	
Rated voltage	230 V	230 V	
Rated current	19.8 A	29.1 A	
L. R. Amperes	224 A	224 A	
LRC	11.3	7.7	
No load current	4.90 A	4.90 A	
Rated speed	3547 rpm	3508 rpm	
Slip	1.47 %	2.56 %	
Rated torque	7.31 ft.lb	11.1 ft.lb	
Locked rotor torque	300 %	200 %	
Pull up torque	255 %	170 %	
Breakdown torque	410 %	260 %	
Service factor	1.00	1.00	
Temperature rise	80 K	105 K	
Noise level ²	72.0 dB(A)	72.0 dB(A)	
Locked rotor time (hot)	7 s	5 s	
Locked rotor time (cold)	13 s	9 s	
Efficiency (%)	50%	73.4	79.3
	75%	79.9	83.2
	100%	82.9	83.9
Power Factor	50%	0.95	0.97
	75%	0.97	0.98
	100%	0.98	0.98

	Drive end	Non drive end	Foundation loads
Bearing type	6206-ZZ	6205-ZZ	Max. traction :-
Lubrication interval	-	-	Max. compression :-
Lubricant amount	-	-	Load type :-
Lubricant type	MOBIL POLYREX EM		Load torque :-
			Load inertia (J=GD ² /4) :-

Notes
See notes on page 2.

This revision replaces and cancel the previous one, which must be eliminated.
 (1) Looking the motor from the shaft end.
 (2) Measured at 1m and with tolerance of +3dB(A).
 (3) Approximate weight, subject to be changed after manufacturing process.

These are average values based on tests with sinusoidal power supply, subject to the tolerances stipulated in NEMA MG 1-12.

Rev.	Changes Summary	Rev.	Checked	Date
Performed by	farazq	1850594641		
Checked by	AUTOMATICO	Page	Rev.	
Date	20/05/2026	1 / 2	0	

DATA SHEET

Single Phase Induction Motor - Squirrel Cage



Customer : V.J. PAMENSKY CANADA INC.

Product line : W01 - TEAO - Grain Dryer

Thermal protection

ID	Application	Type	Quantity	Sensing Temperature
1	Winding	Thermostat - 2 wires	1 x Phase	155°C

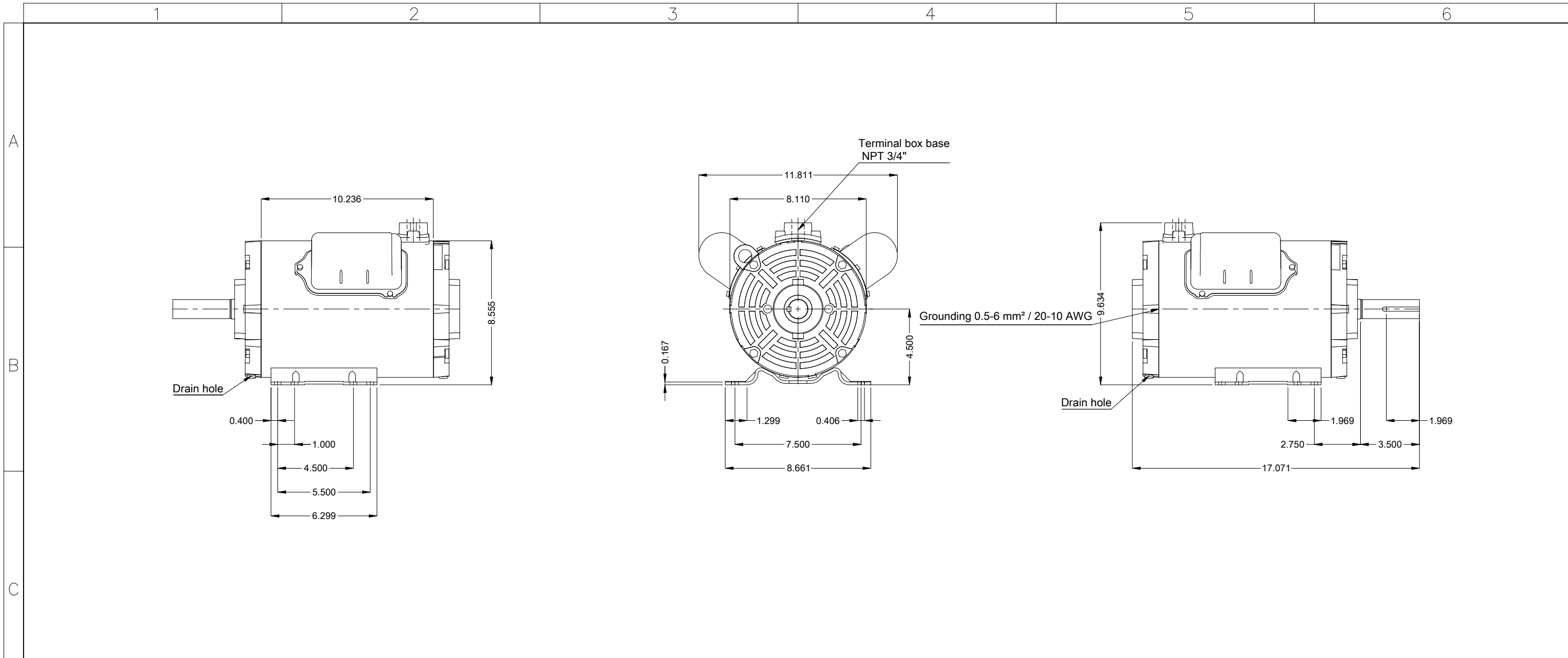
Notes

Standards	Specification : MG1 - Part 10	Vibration : MG1 - Part 7
	Test : MG1 - Part 12	Tolerance : MG1 - Part 12
	Noise : MG1 - Part 9	

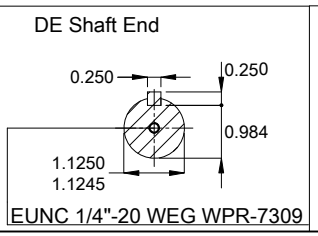
This revision replaces and cancel the previous one, which must be eliminated.
 (1) Looking the motor from the shaft end.
 (2) Measured at 1m and with tolerance of +3dB(A).
 (3) Approximate weight, subject to be changed after manufacturing process.

These are average values based on tests with sinusoidal power supply, subject to the tolerances stipulated in NEMA MG 1-12.

Rev.	Changes Summary	Rev.	Checked	Date
Performed by	farazq	1850594641		
Checked by	AUTOMATICO	Page	Rev.	
Date	20/05/2026	2 / 2	0	



Mounting MARKET F-3/B3T
 Mounting B3T



5.0-7.5 HP 02 Poles 60 Hz										A	
Scale 1 : 6											
HYBRISUSER										00	
ECM	LOC	SUMMARY OF MODIFICATIONS					EXECUTED	CHECKED	RELEASED	DATE	VER
EXECUTED	HYBRISUSER	SINGLE PH. MOTOR ROLLED STEEL GRAIN DRYER FRAME 182/4TZ IP55 TEAO					PREVIEW		WDD 00		
CHECKED							SHEET		1 / 1		
RELEASED											
REL. DATE											