

# DATA SHEET

## Three Phase Induction Motor - Squirrel Cage



Customer : V.J. PAMENSKY CANADA INC.

Product line : W01 - TEAO - Grain Dryer

Frame	: 182/4TZ	Cooling method	: IC418 - TEAO
Insulation class	: F	Minimum air speed over motor	: 16.8 m/s
Duty cycle	: S1	Mounting	: F-3/B3T
Ambient temperature	: -20 °C to +40 °C	Rotation <sup>1</sup>	: Counter clockwise
Altitude	: 3280 ft	Starting method	: Direct On Line
Protection degree	: IP55	Approx. weight <sup>3</sup>	: 74.1 lb
Design	: B	Moment of inertia (J)	: 0.1922 sq.ft.lb

Output	5 HP (3.7 kW)	7.5 HP (5.5 kW)	
Poles	2	2	
Frequency	60 Hz	60 Hz	
Rated voltage	575 V	575 V	
Rated current	5.16 A	7.09 A	
L. R. Amperes	57.8 A	57.4 A	
LRC	11.2	8.1	
No load current	2.24 A	2.24 A	
Rated speed	3535 rpm	3495 rpm	
Slip	1.81 %	2.92 %	
Rated torque	7.31 ft.lb	11.1 ft.lb	
Locked rotor torque	390 %	260 %	
Pull up torque	330 %	220 %	
Breakdown torque	520 %	350 %	
Service factor	1.00	1.00	
Temperature rise	105 K	105 K	
Noise level <sup>2</sup>	68.0 dB(A)	68.0 dB(A)	
Locked rotor time (hot)	14 s	7 s	
Locked rotor time (cold)	25 s	13 s	
Efficiency (%)	50%	83.6	86.7
	75%	86.7	87.9
	100%	87.8	87.5
Power Factor	50%	0.61	0.74
	75%	0.74	0.84
	100%	0.82	0.89

Losses at normative operating points (speed;torque), in percentage of rated output power

Losses (%)	P1(0,9;1,0)	12.7	13.0
	P2(0,5;1,0)	8.6	8.8
	P3(0,25;1,0)	7.3	7.6
	P4(0,9;0,5)	8.4	8.6
	P5(0,5;0,5)	4.5	4.6
	P6(0,5;0,25)	3.5	3.6
	P7(0,25;0,25)	2.0	2.0

Bearing type	Drive end 6206-ZZ	Non drive end 6205-ZZ	Foundation loads	
Lubrication interval	-	-	Max. traction	:
Lubricant amount	-	-	Max. compression	:
Lubricant type	MOBIL POLYREX EM		Load type	:-
			Load torque	:-
			Load inertia (J=GD <sup>2</sup> /4)	:-

### Notes

See notes on page 2.

Rev.	Changes Summary	Rev.	Checked	Date
Performed by	farazq			1850604889
Checked by	AUTOMATICO	Page	Rev.	
Date	20/05/2026	1 / 2	0	

# DATA SHEET

## Three Phase Induction Motor - Squirrel Cage



Customer : V.J. PAMENSKY CANADA INC.

Product line : W01 - TEAO - Grain Dryer

Thermal protection ID	Application	Type	Quantity	Sensing Temperature
1	Winding	Thermostat - 2 wires	1 x Phase	155°C

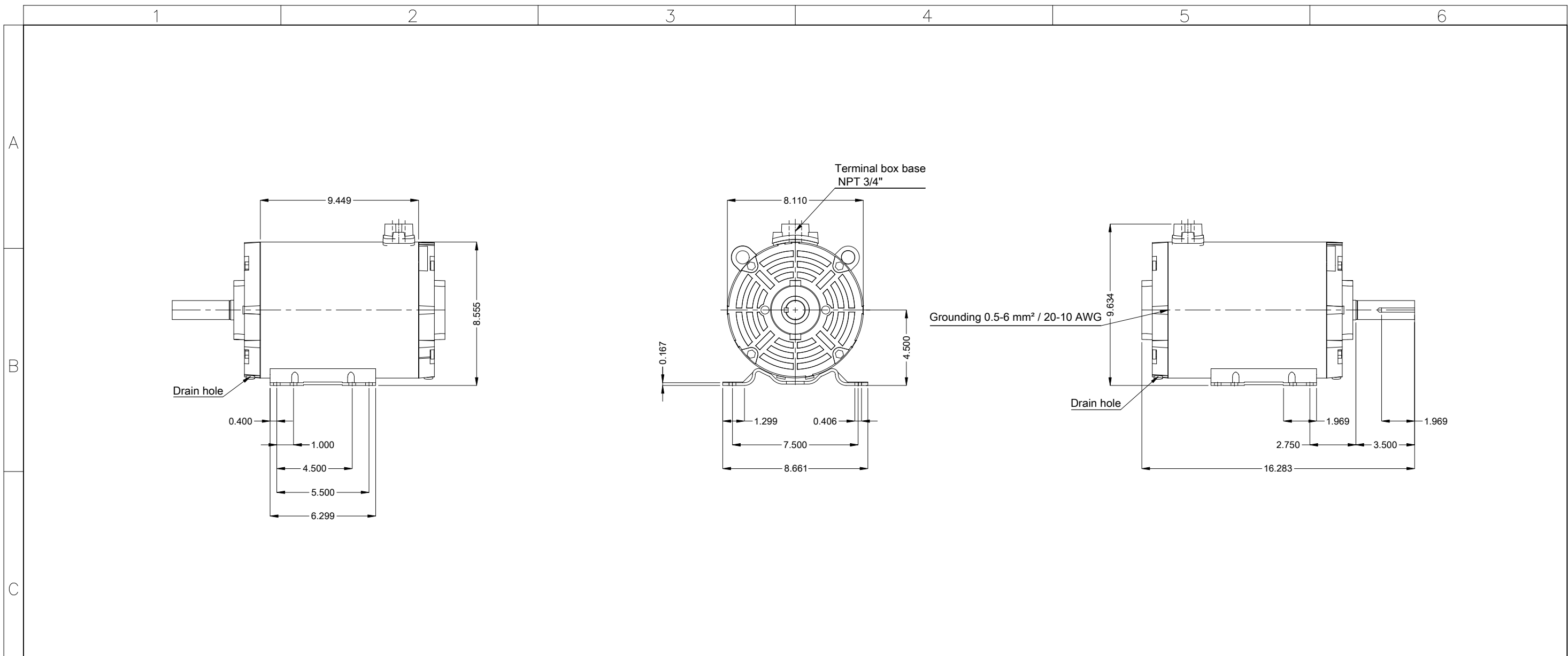
### Notes

Standards	Specification	: MG1 - Part 10	Vibration	: MG1 - Part 7
	Test	: MG1 - Part 12	Tolerance	: MG1 - Part 12
	Noise	: MG1 - Part 9		

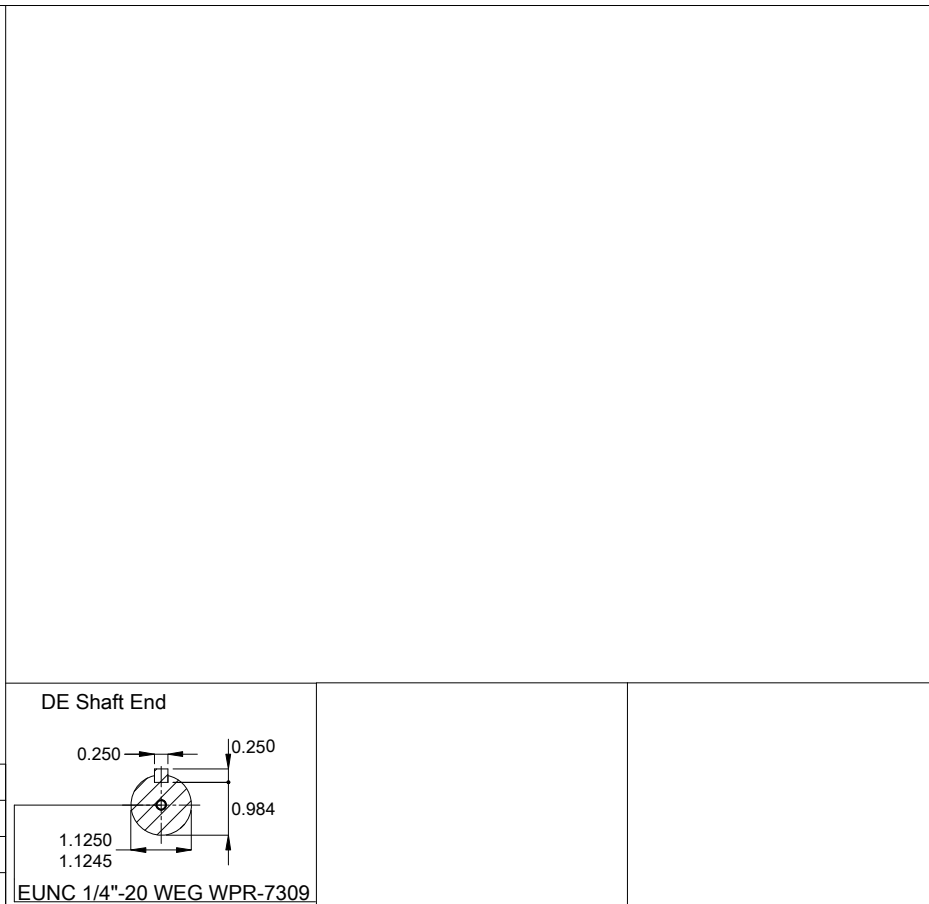
This revision replaces and cancel the previous one, which must be eliminated.  
 (1) Looking the motor from the shaft end.  
 (2) Measured at 1m and with tolerance of +3dB(A).  
 (3) Approximate weight, subject to be changed after manufacturing process.

These are average values based on tests with sinusoidal power supply, subject to the tolerances stipulated in NEMA MG 1-12.

Rev.	Changes Summary		Rev.	Checked	Date
	Performed by	farazq		1850604889	
	Checked by	AUTOMATICO		Page	Rev.
	Date	20/05/2026		2 / 2	0



Color RAL 7031
Painting plan 207N
Mounting MARKET F-3/B3T
Mounting B3T



5.0-7.5 HP 02 Poles 60 Hz										A	
Scale 1 : 6											
HYBRISUSER										00	
ECM	LOC	SUMMARY OF MODIFICATIONS					EXECUTED	CHECKED	RELEASED	DATE	VER
EXECUTED	HYBRISUSER	THREE PH. MOTOR ROLLED STEEL GRAIN DRYER					PREVIEW		WDD 00		
CHECKED		FRAME 182/4TZ IP55 TEAO					SHEET		1 / 1		
RELEASED							WEG				
REL. DATE											