

# DATA SHEET



## Single Phase Induction Motor - Squirrel Cage

Customer :						
Product line		: Rolled Steel 00022 Single-Phase		Product code : 18968415		
Frame	: 56C	Locked rotor time	: 14s (cold) 8s (hot)			
Output	: 1 HP (0.75 kW)	Temperature rise	: 80 K			
Frequency	: 60 Hz	Duty cycle	: Cont.(S1)			
Rated voltage	: 115/230 V	Ambient temperature	: -20°C to +40°C			
Poles	: 4	Altitude	: 1000 m.a.s.l.			
Rated current	: 13.6/6.80 A	Protection degree	: IP55			
	: 6.7x(Code M)	Cooling method	: IC411 - TEFC			
Rated speed	: 1745 rpm	Mounting	: F-1			
Rated torque	: 0.416 kgfm	Rotation <sup>1</sup>	: Both (CW and CCW)			
Insulation class	: F	Noise level <sup>2</sup>	: 54.0 dB(A)			
Service factor	: 1.15	Starting method	: Direct On Line			
Moment of inertia (J)	: 0.0044 kgm <sup>2</sup>	Approx. weight <sup>3</sup>	: 17.6 kg			
Design	: L					
Output	50%	75%	100%	Foundation loads		
Efficiency (%)	62.0	68.0	71.0	Max. traction : 27 kgf		
Power Factor	0.48	0.60	0.68	Max. compression : 45 kgf		
Bearing type	:	<u>Drive end</u> 6204 2RS	<u>Non drive end</u> 6202 2RS			
Sealing	:	V'Ring	Without Bearing Seal			
Lubrication interval	:	-	-			
Lubricant amount	:	-	-			
Lubricant type	:	Mobil Polyrex EM				
Notes						
<p>This revision replaces and cancel the previous one, which must be eliminated.</p> <p>(1) Looking the motor from the shaft end.</p> <p>(2) Measured at 1m and with tolerance of +3dB(A).</p> <p>(3) Approximate weight subject to changes after manufacturing process.</p> <p>(4) At 100% of full load.</p>			<p>These are average values based on tests with sinusoidal power supply, subject to the tolerances stipulated in NEMA MG-1.</p>			
Rev.	Changes Summary			Performed	Checked	Date
Performed by						
Checked by					Page	Revision
Date	26/03/2026				1 / 2	

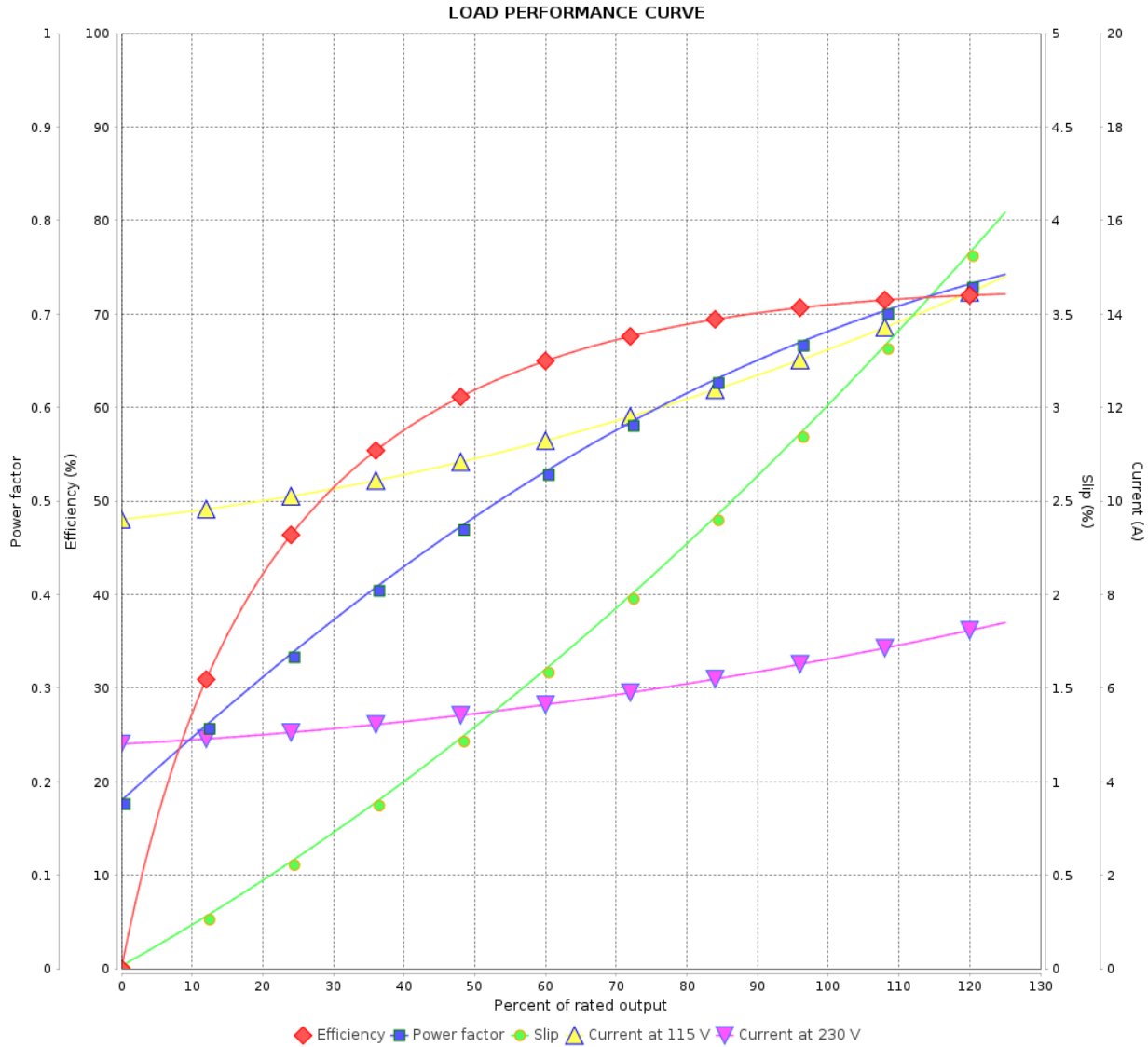
# LOAD PERFORMANCE CURVE

Single Phase Induction Motor - Squirrel Cage

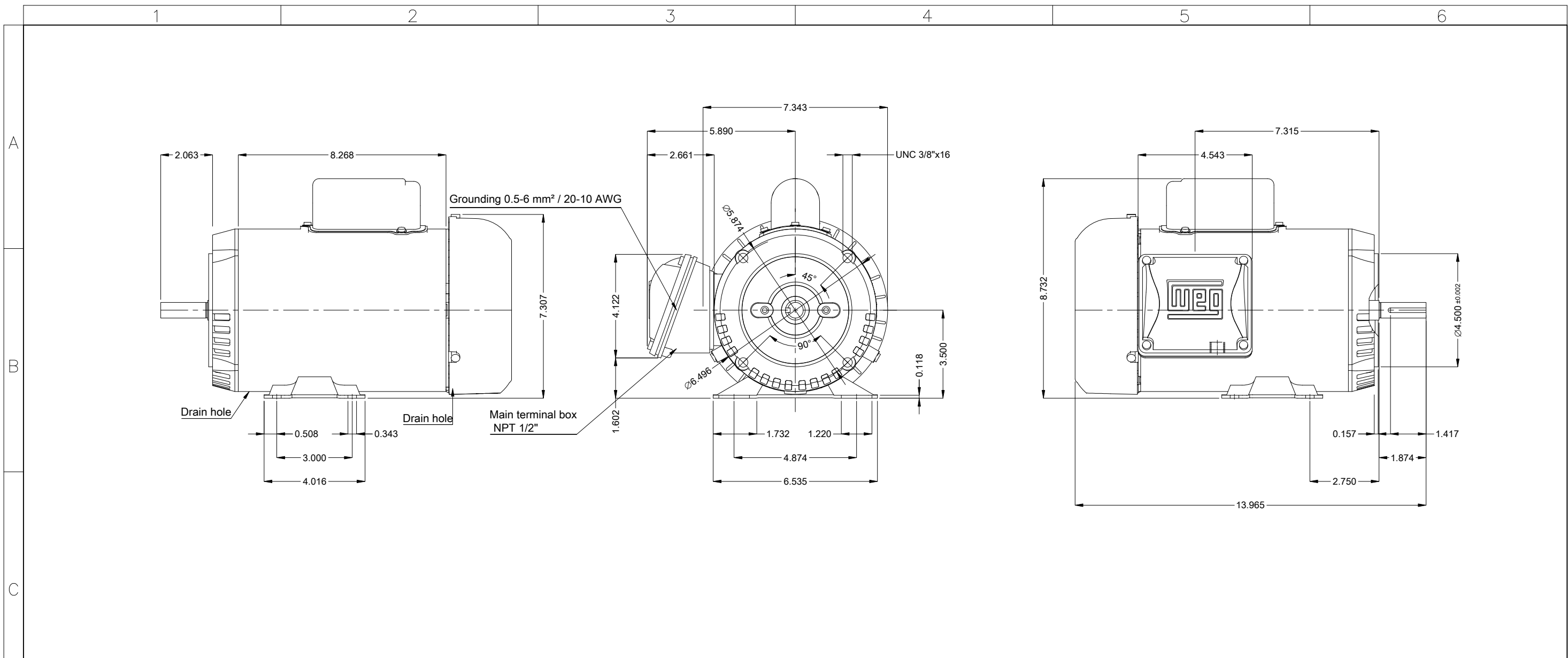


Customer :

Product line : Rolled Steel 00022 Single-Phase      Product code : 18968415



Rev.	Changes Summary	Performed	Checked	Date
Performed by			Page 2 / 2	Revision
Checked by				
Date	26/03/2026			

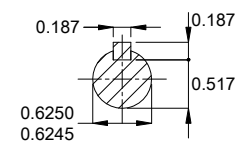


1  
2  
3  
4  
5  
6

A  
B  
C  
D  
E

- Reinforce the foot with 2 mig welding spots
- Fan cover - steel plate
- Color RAL 3002
- Mounting MARKET F-1/B34R(D)
- Mounting B34D

DE Shaft End



1 HP 04 Poles 60 Hz										A	
Scale 1 : 4											
HYBRISUSER										00	
ECM	LOC	SUMMARY OF MODIFICATIONS					EXECUTED	CHECKED	RELEASED	DATE	VER
EXECUTED	HYBRISUSER	SINGLE PH. MOTOR ROLLED STEEL FARM DUTY					PREVIEW		WDD 00		
CHECKED		FRAME 56C IP55 TEFC					SHEET 1 / 1				
RELEASED											
REL. DATE											