

# DATA SHEET

## Three Phase Induction Motor - Squirrel Cage



Customer :

Product line : W22 P Base NEMA Premium Efficiency Three-Phase Product code : 13293743

Frame	: 213/5HP	Locked rotor time	: 36s (cold) 20s (hot)
Output	: 7.5 HP (5.5 kW)	Temperature rise	: 80 K
Poles	: 4	Duty cycle	: Cont.(S1)
Frequency	: 60 Hz	Ambient temperature	: -20°C to +40°C
Rated voltage	: 208-230/460 V	Altitude	: 1000 m.a.s.l.
Rated current	: 19.9-18.4/9.18 A	Protection degree	: IP55
L. R. Amperes	: 141-131/65.2 A	Cooling method	: IC411 - TEFC
LRC	: 7.1x(Code H)	Mounting	: W-6
No load current	: 7.59-8.80/4.40 A	Rotation <sup>1</sup>	: Both (CW and CCW)
Rated speed	: 1765 rpm	Noise level <sup>2</sup>	: 58.0 dB(A)
Slip	: 1.94 %	Starting method	: Direct On Line
Rated torque	: 3.08 kgfm	Approx. weight <sup>3</sup>	: 82.0 kg
Locked rotor torque	: 220 %		
Breakdown torque	: 310 %		
Insulation class	: F		
Service factor	: 1.25		
Moment of inertia (J)	: 0.0566 kgm <sup>2</sup>		
Design	: B		

Output	25%	50%	75%	100%	Foundation loads
Efficiency (%)	0.000	89.5	91.0	91.7	Max. traction
Power Factor	0.00	0.66	0.76	0.82	Max. compression

	Drive end	Non drive end
Bearing type	: 6309 ZZ	6207 ZZ
Sealing	: V'Ring	V'Ring
Lubrication interval	: 0 h	0 h
Lubricant amount	: 0 g	0 g
Lubricant type	Mobil Polyrex EM	

### Notes

This revision replaces and cancel the previous one, which must be eliminated.

- (1) Looking the motor from the shaft end.
- (2) Measured at 1m and with tolerance of +3dB(A).
- (3) Approximate weight subject to changes after manufacturing process.
- (4) At 100% of full load.

These are average values based on tests with sinusoidal power supply, subject to the tolerances stipulated in NEMA MG-1.

Rev.	Changes Summary	Performed	Checked	Date
Performed by				
Checked by				
Date	26/10/2024			

Page 1 / 2  
Revision

# LOAD PERFORMANCE CURVE

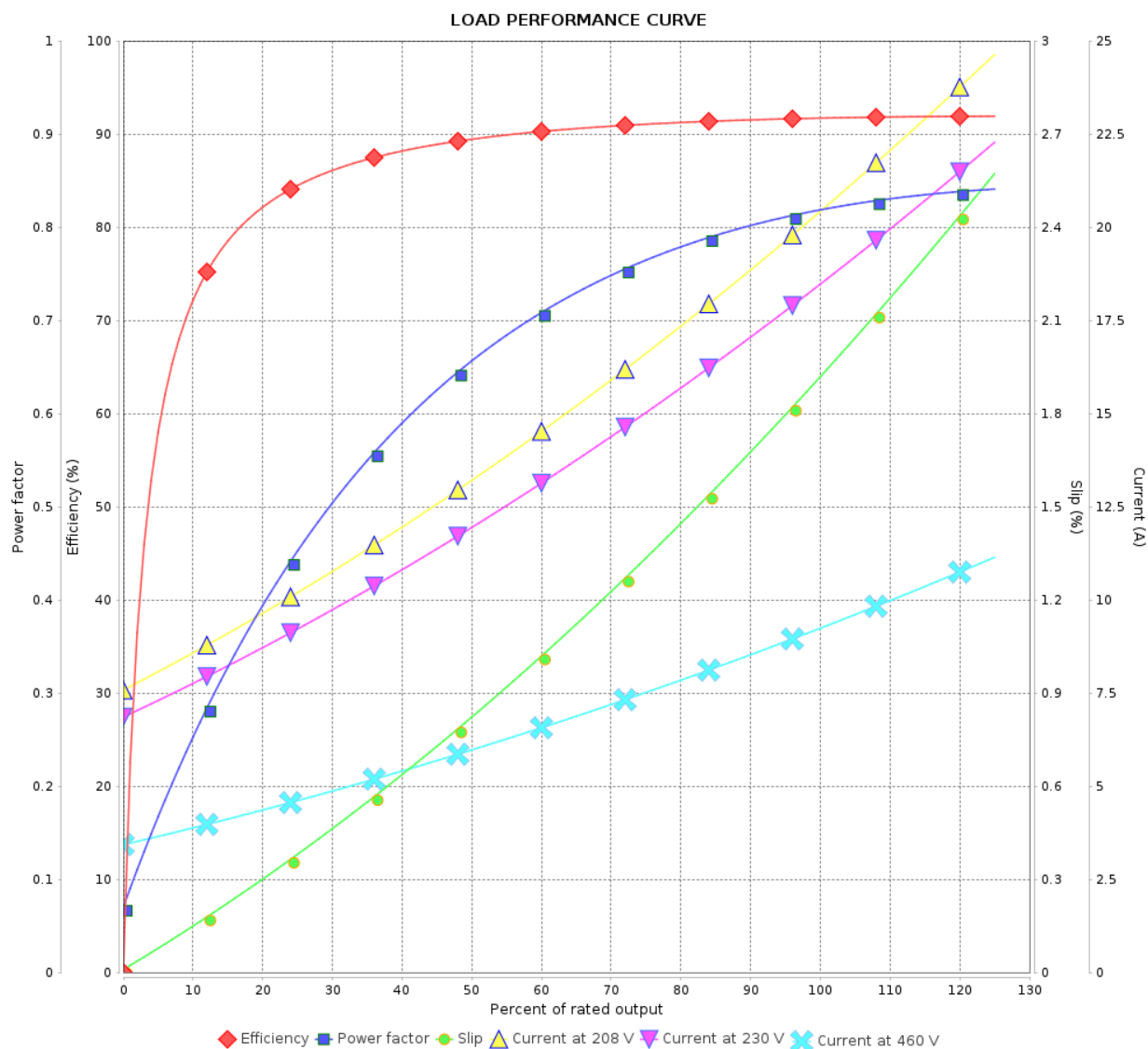
## Three Phase Induction Motor - Squirrel Cage



Customer :

Product line : W22 P Base NEMA Premium  
Efficiency Three-Phase

Product code : 13293743

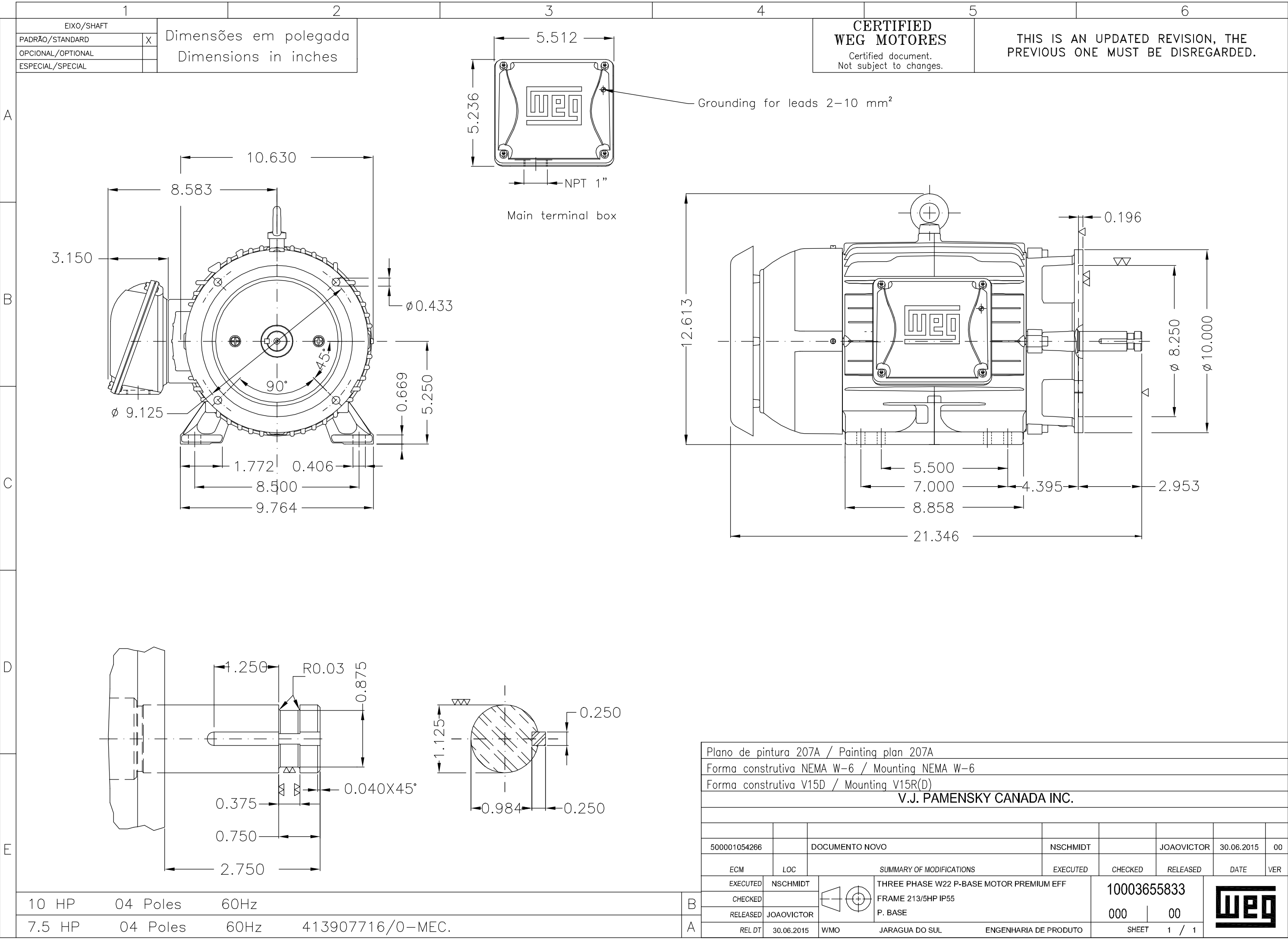


Performance : 208-230/460 V 60 Hz 4P

Rated current : 19.9-18.4/9.18 A  
LRC : 7.1  
Rated torque : 3.08 kgfm  
Locked rotor torque : 220 %  
Breakdown torque : 310 %  
Rated speed : 1765 rpm

Moment of inertia (J) : 0.0566 kgm<sup>2</sup>  
Duty cycle : Cont.(S1)  
Insulation class : F  
Service factor : 1.25  
Temperature rise : 80 K  
Design : B

Rev.	Changes Summary		Performed	Checked	Date
Performed by				Page 2 / 2Revision	
Checked by					
Date	26/10/2024				



UNCONTROLLED COPY

RELEASED

ZME A3