

DATA SHEET

Three Phase Induction Motor - Squirrel Cage



Customer :

Product line : W22 NEMA Premium Efficiency Three-Phase Product code : 17371727

Frame	: 586/7TZ	Locked rotor time	: 45s (cold) 25s (hot)
Output	: 500 HP (370 kW)	Temperature rise	: 80 K
Frequency	: 60 Hz	Duty cycle	: Cont.(S1)
Rated voltage	: 575 V	Ambient temperature	: -20°C to +40°C
Poles	: 6	Altitude	: 1000 m.a.s.l.
Rated current	: 482 A	Protection degree	: IP55
	: 6.0x(Code G)	Cooling method	: IC411 - TEFC
Rated speed	: 1192 rpm	Mounting	: F-1
Rated torque	: 304 kgfm	Rotation ¹	: Both (CW and CCW)
Insulation class	: F	Noise level ²	: 77.0 dB(A)
Service factor	: 1.15	Starting method	: Direct On Line
Moment of inertia (J)	: 15.5 kgm ²	Approx. weight ³	: 2145 kg

Output	50%	75%	100%	Foundation loads	
Efficiency (%)	95.8	96.2	96.2	Max. traction	: 3304 kgf
Power Factor	0.66	0.76	0.80	Max. compression	: 5449 kgf

Losses at normative operating points (speed;torque), in percentage of rated output power

P1 (0,9;1,0)	P2 (0,5;1,0)	P3 (0,25;1,0)	P4 (0,9;0,5)	P5 (0,5;0,5)	P6 (0,5;0,25)	P7 (0,25;0,25)
4.6	3.5	2.8	2.8	1.9	1.5	0.8

	<u>Drive end</u>	<u>Non drive end</u>
Bearing type	: NU-324 C3	: 6319 C3
Sealing	: Taconite Labyrinth	: Taconite Labyrinth
Lubrication interval	: 6000 h	: 13000 h
Lubricant amount	: 72 g	: 45 g
Lubricant type	: Mobil Polyrex EM	

Notes

This revision replaces and cancel the previous one, which must be eliminated.

- (1) Looking the motor from the shaft end.
- (2) Measured at 1m and with tolerance of +3dB(A).
- (3) Approximate weight subject to changes after manufacturing process.
- (4) At 100% of full load.

These are average values based on tests with sinusoidal power supply, subject to the tolerances stipulated in NEMA MG-1.

Rev.	Changes Summary	Performed	Checked	Date
Performed by		Page		Revision
Checked by		1 / 3		
Date	28/05/2026			

DATA SHEET

Three Phase Induction Motor - Squirrel Cage



Customer : _____

Thermal protection

ID	Application	Type	Quantity	Sensing Temperature
1	Winding	Thermostat - 2 wires	1 x Phase	155 °C

Space heater information

Voltage: 200 - 240 V

Rev.	Changes Summary	Performed	Checked	Date
Performed by				
Checked by			Page	Revision
Date	28/05/2026		2 / 3	

LOAD PERFORMANCE CURVE

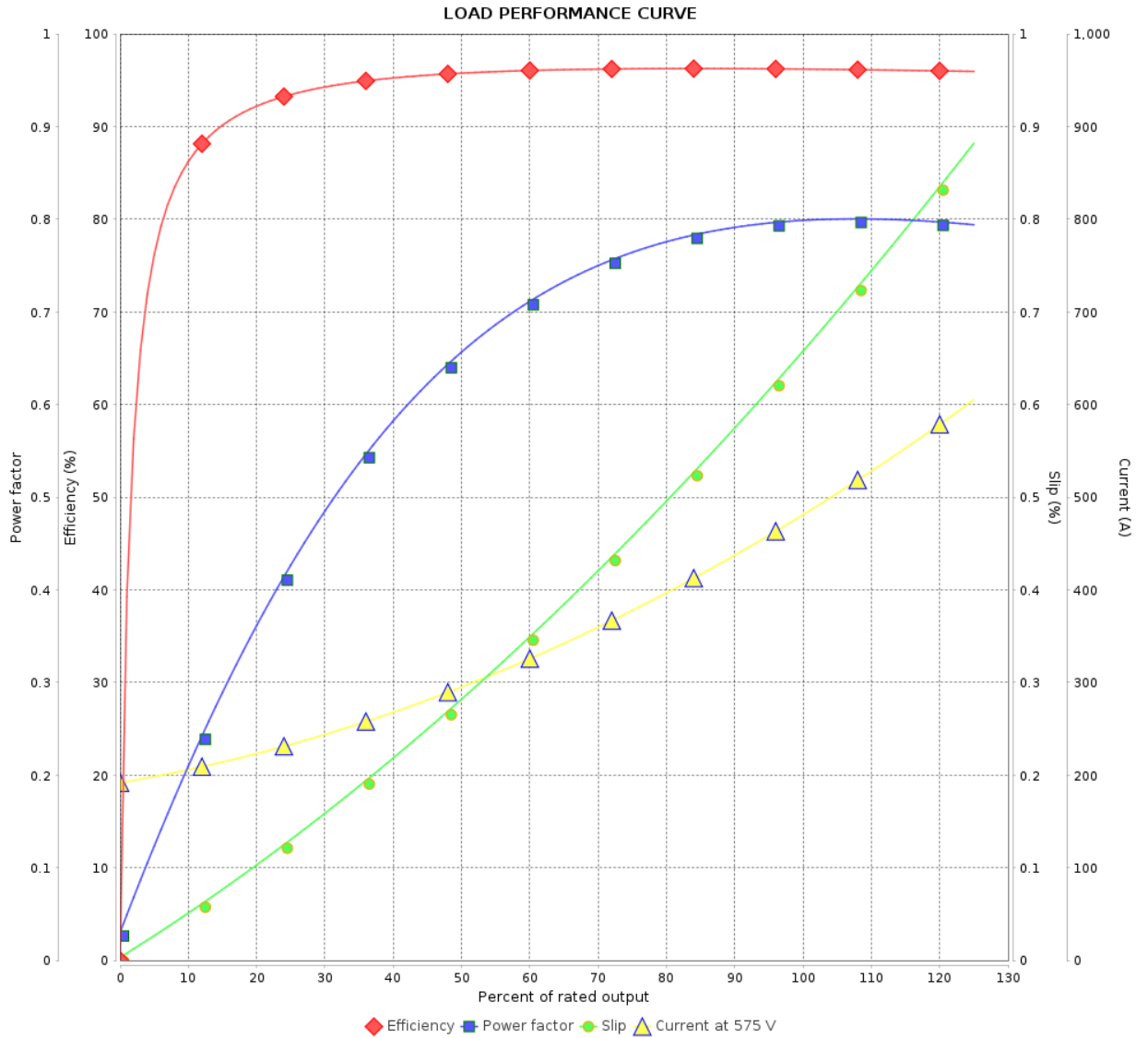
Three Phase Induction Motor - Squirrel Cage



Customer :

Product line : W22 NEMA Premium Efficiency Three-Phase

Product code : 17371727



Rev.	Changes Summary	Performed	Checked	Date
Performed by			Page 3 / 3	Revision
Checked by				
Date	28/05/2026			

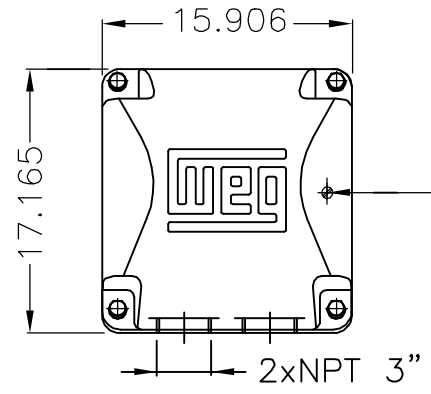
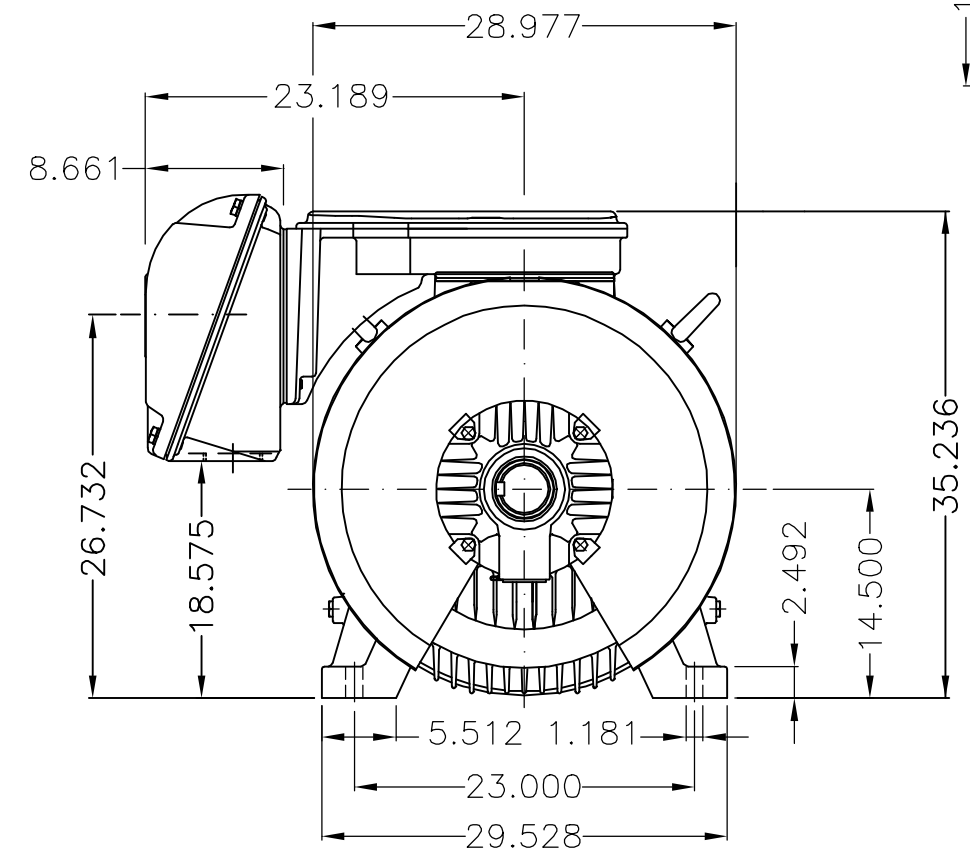
EIXO/SHAFT	
PADRÃO/STANDARD	
OPCIONAL/OPTIONAL	
ESPECIAL/SPECIAL	X

Dimensões em polegada
Dimensions in inches

CERTIFIED WEG MOTORES
Certified document.
Not subject to changes.

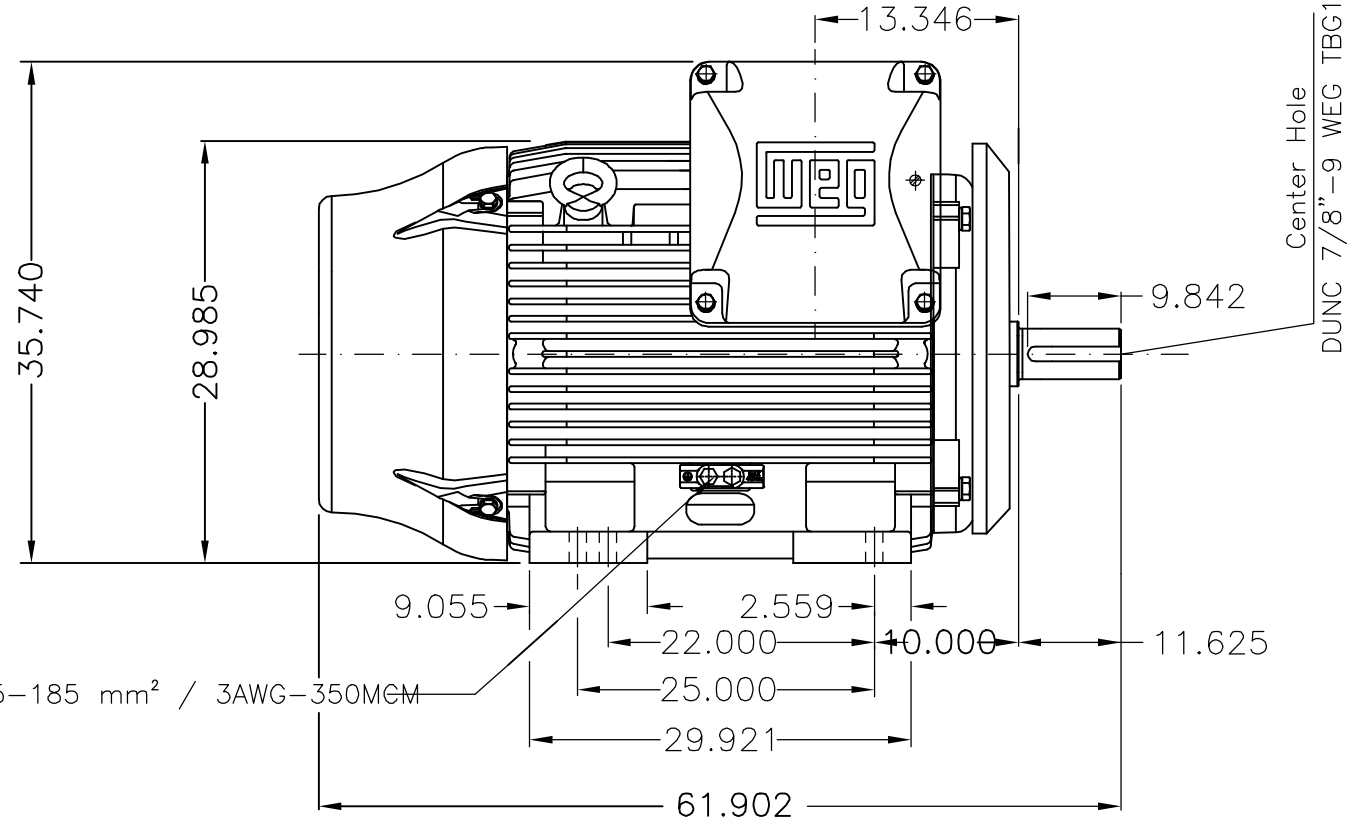
THIS IS AN UPDATED REVISION, THE PREVIOUS ONE MUST BE DISREGARDED.

A
B
C
D
E



Main terminal box

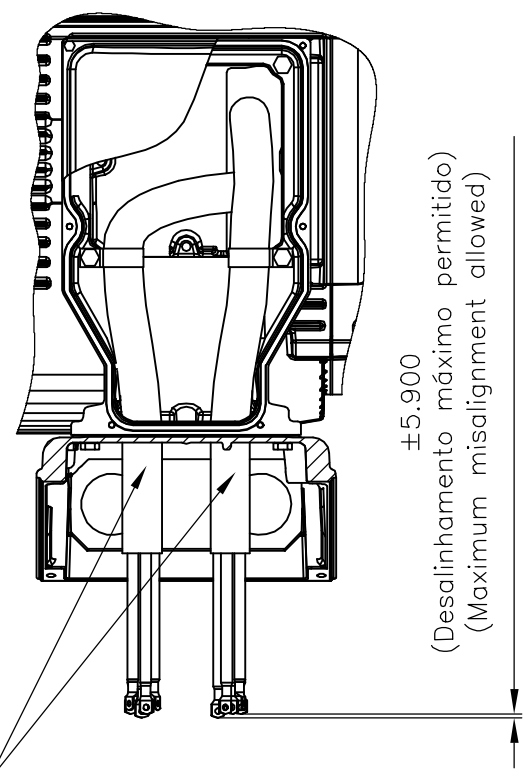
Grounding for leads 35-120 mm² / 1-4/0 AWG



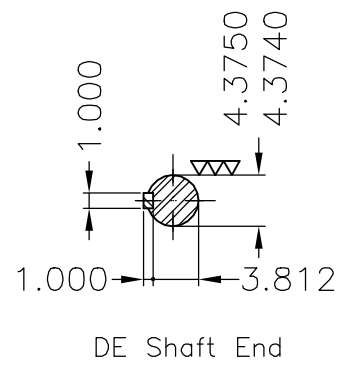
Grounding for leads 25-185 mm² / 3AWG-350MCM

Center Hole
DUNC 7/8"-9 WEG TBG12

Fixar o conduto no suporte com abraçadeiras.
Fasten the conduit on support with cables ties.



±5.900
(Desalinhamento máximo permitido)
(Maximum misalignment allowed)



DE Shaft End

Conduite para cabos no interior do suporte da caixa de ligação	Cables conduit inside terminal box support
Tampa dianteira especial / Special DE endshield	Rolamento dianteiro de rolos NU-324 / NU-324 DE roller bearing
Linha do motor: Crusher Duty / Motor purpose: Crusher Duty	Dispositivo de travamento de eixo / Shaft locking device
Proteção térmica para desligamento - termostato 155°C	Thermal protection to switch off - thermostat 155°C
Tampa traseira com mancal eletricamente isolado	NDE endshield with electrically insulated bearing hub
Defletor de ar dianteiro / Drive-End Air Deflector	Cor RAL 5009 / Color RAL 5009
Plano de pintura 203A / Painting plan 203A	Forma construtiva NEMA F-1 / Mounting NEMA F-1
Forma construtiva B3D / Mounting B3R(D)	

WEG ELECTRIC CORPORATION - WEC

414149741/0 MEC

500002368949		REMOVIDA NOTA DE CATEGORIA A	FRANCINES	LEDUARDO	LEDUARDO	05.05.2023	05
500001346215	B2	ADDED DEFLECTOR RETAIL	SAORIN	ERIC	ERIC	10.08.2017	04
ECM	LOC	SUMMARY OF MODIFICATIONS	EXECUTED	CHECKED	RELEASED	DATE	VER
EXECUTED	DVEGINI	THREE PHASE W22 MOTOR - NEMA PREMIUM EFF FRAME 586/7TZ IP55 TEFC			10004909462		
CHECKED	NSCHMDT				000 05		
RELEASED	NSCHMDT				SHEET 1 / 1		
REL DT	02.05.2017	WMO	Jaraguá do Sul	Product Engineering			

500 HP 06 Poles 60Hz 414649158/0

A



UNCONTROLLED COPY RELEASED ZME A3