

# DATA SHEET

## Three Phase Induction Motor - Squirrel Cage



Customer : \_\_\_\_\_

Product line : W22 P Base NEMA Premium Efficiency Three-Phase      Product code : 13128964

Frame : 145HP	Cooling method : IC411 - TEFC
Insulation class : F	Mounting : W-6
Duty cycle : Cont.(S1)	Rotation <sup>1</sup> : Both (CW and CCW)
Ambient temperature : -20°C to +40°C	Starting method : Direct On Line
Altitude : 1000 m.a.s.l.	Approx. weight <sup>3</sup> : 27.3 kg
Protection degree : IP55	Moment of inertia (J) : 0.0066 kgm <sup>2</sup>
Design : B	

Output [HP]	2	1.5	1.5	1.5	2	2	2
Poles	4	4	4	4	4	4	4
Frequency [Hz]	60	50	50	50	50	50	50
Rated voltage [V]	230/460	380	400	415	380	400	415
Rated current [A]	5.58/2.79	2.57	2.57	2.56	3.33	3.22	3.14
L. R. Amperes [A]	46.3/23.2	21.1	22.4	21.5	20.0	21.3	22.9
LRC [A]	8.3x(Code L)	8.2x(Code L)	8.7x(Code M)	8.4x(Code M)	6.0x(Code H)	6.6x(Code J)	7.3x(Code K)
No load current [A]	3.26/1.63	1.61	1.80	1.97	1.61	1.80	1.97
Rated speed [RPM]	1750	1460	1465	1465	1435	1440	1450
Slip [%]	2.78	2.67	2.33	2.33	4.33	4.00	3.33
Rated torque [kgfm]	0.829	0.746	0.743	0.743	1.01	1.01	1.00
Locked rotor torque [%]	270	290	320	350	220	229	250
Breakdown torque [%]	320	330	380	409	240	260	290
Service factor	1.25	1.25	1.25	1.25	1.25	1.25	1.25
Temperature rise	80 K	80 K	80 K	80 K	80 K	80 K	80 K
Locked rotor time	18s (cold) 10s (hot)	32s (cold) 18s (hot)	28s (cold) 16s (hot)	27s (cold) 15s (hot)	23s (cold) 13s (hot)	21s (cold) 12s (hot)	21s (cold) 12s (hot)
Noise level <sup>2</sup>	51.0 dB(A)	49.0 dB(A)	49.0 dB(A)	49.0 dB(A)	49.0 dB(A)	49.0 dB(A)	49.0 dB(A)
Efficiency (%)	25%						
	50%	85.5	84.0	82.0	81.4	85.5	84.0
	75%	86.5	84.2	83.5	83.1	84.0	84.0
	100%	86.5	84.5	84.5	84.1	82.5	84.0
Power Factor	25%						
	50%	0.57	0.55	0.50	0.47	0.66	0.62
	75%	0.70	0.69	0.64	0.61	0.78	0.74
	100%	0.78	0.77	0.73	0.71	0.83	0.80

Losses at normative operating points (speed;torque), in percentage of rated output power

Losses (%)	P1 (0,9;1,0)	15.0	15.0	15.0	15.0	15.0	15.0
	P2 (0,5;1,0)	12.8	12.8	12.8	12.8	12.8	12.8
	P3 (0,25;1,0)	12.1	12.1	12.1	12.1	12.1	12.1
	P4 (0,9;0,5)	8.4	8.4	8.4	8.4	8.4	8.4
	P5 (0,5;0,5)	6.0	6.0	6.0	6.0	6.0	6.0
	P6 (0,5;0,25)	4.7	4.7	4.7	4.7	4.7	4.7
	P7 (0,25;0,25)	3.5	3.5	3.5	3.5	3.5	3.5

Bearing type	: Drive end 6307 ZZ      Non drive end 6204 ZZ	Foundation loads Max. traction Max. compression
Sealing	: V'Ring      V'Ring	
Lubrication interval	: -      -	
Lubricant amount	: -      -	
Lubricant type	: Mobil Polyrex EM	

This revision replaces and cancel the previous one, which must be eliminated.

(1) Looking the motor from the shaft end.

These are average values based on tests with sinusoidal power supply, subject to the tolerances stipulated in NEMA MG-1.

Rev.	Changes Summary	Performed	Checked	Date
Performed by			Page	Revision
Checked by			1 / 9	
Date	26/10/2024			

# DATA SHEET

## Three Phase Induction Motor - Squirrel Cage



Customer : \_\_\_\_\_

Notes  
USABLE @208V 5.85A SF 1.15 SFA 6.73A

Rev.	Changes Summary	Performed	Checked	Date
Performed by				
Checked by			Page	Revision
Date	26/10/2024		2 / 9	

# LOAD PERFORMANCE CURVE

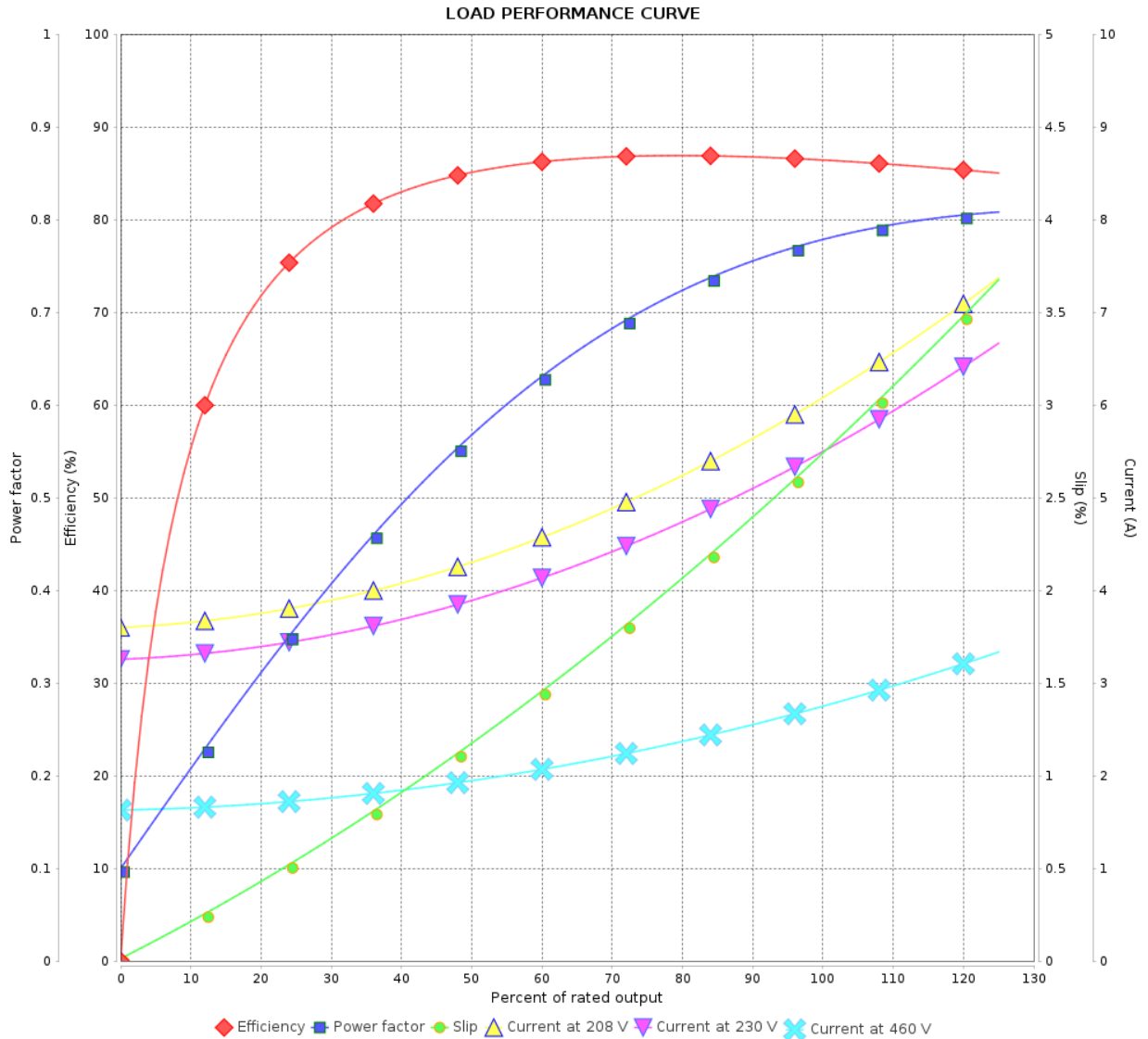
## Three Phase Induction Motor - Squirrel Cage



Customer :

Product line : W22 P Base NEMA Premium  
Efficiency Three-Phase

Product code : 13128964



Performance : 230/460 V 60 Hz 4P

Rated current : 5.58/2.79 A  
 LRC : 8.3  
 Rated torque : 0.829 kgfm  
 Locked rotor torque : 270 %  
 Breakdown torque : 320 %  
 Rated speed : 1750 rpm

Moment of inertia (J) : 0.0066 kgm<sup>2</sup>  
 Duty cycle : Cont.(S1)  
 Insulation class : F  
 Service factor : 1.25  
 Temperature rise : 80 K  
 Design : B

Rev.	Changes Summary	Performed	Checked	Date
Performed by		Page		Revision
Checked by		3 / 9		
Date		26/10/2024		

# LOAD PERFORMANCE CURVE

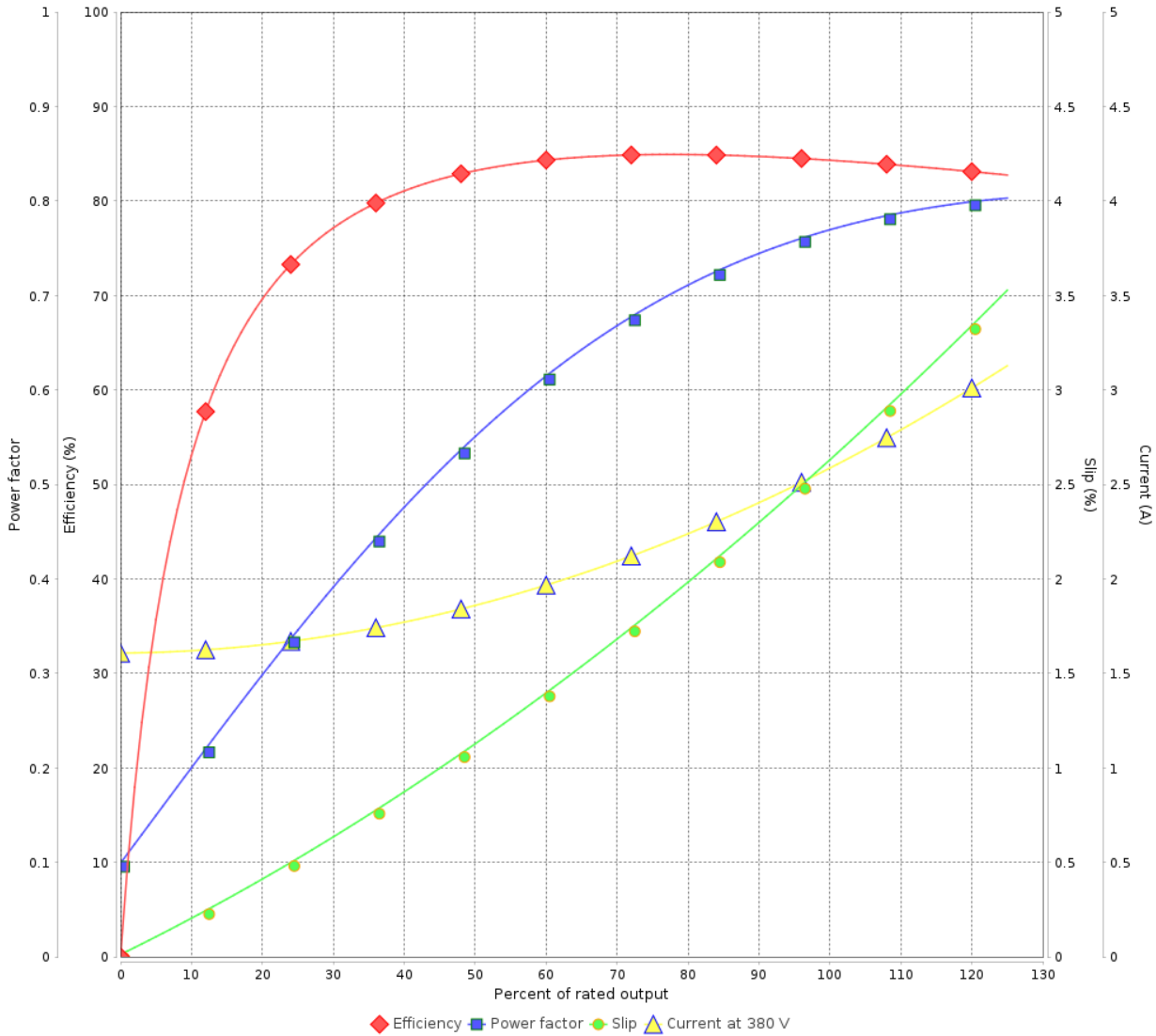
Three Phase Induction Motor - Squirrel Cage



Customer :

Product line : W22 P Base NEMA Premium Efficiency Three-Phase      Product code : 13128964

LOAD PERFORMANCE CURVE



Performance : 380 V 50 Hz 4P IE3

Rated current	: 2.57 A	Moment of inertia (J)	: 0.0066 kgm <sup>2</sup>
LRC	: 8.2	Duty cycle	: Cont.(S1)
Rated torque	: 0.746 kgfm	Insulation class	: F
Locked rotor torque	: 290 %	Service factor	: 1.25
Breakdown torque	: 330 %	Temperature rise	: 80 K
Rated speed	: 1460 rpm	Design	: B

Rev.	Changes Summary	Performed	Checked	Date
Performed by			Page 4 / 9	Revision
Checked by				
Date	26/10/2024			

# LOAD PERFORMANCE CURVE

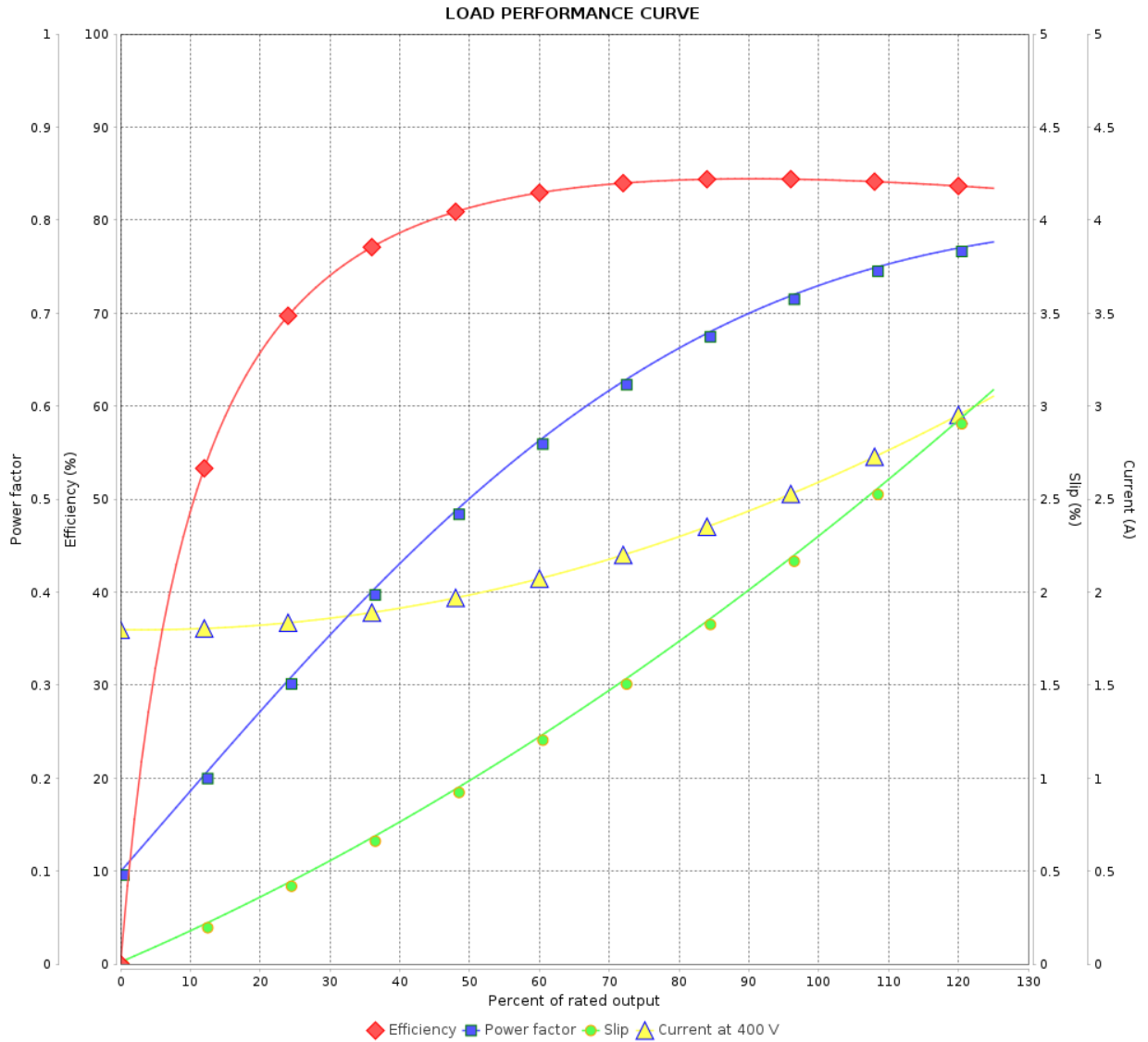
## Three Phase Induction Motor - Squirrel Cage



Customer :

Product line : W22 P Base NEMA Premium  
Efficiency Three-Phase

Product code : 13128964



Performance : 400 V 50 Hz 4P IE3

Rated current : 2.57 A  
 LRC : 8.7  
 Rated torque : 0.743 kgfm  
 Locked rotor torque : 320 %  
 Breakdown torque : 380 %  
 Rated speed : 1465 rpm

Moment of inertia (J) : 0.0066 kgm<sup>2</sup>  
 Duty cycle : Cont.(S1)  
 Insulation class : F  
 Service factor : 1.25  
 Temperature rise : 80 K  
 Design : B

Rev.	Changes Summary	Performed	Checked	Date
Performed by			Page 5 / 9	Revision
Checked by				
Date	26/10/2024			

# LOAD PERFORMANCE CURVE

Three Phase Induction Motor - Squirrel Cage

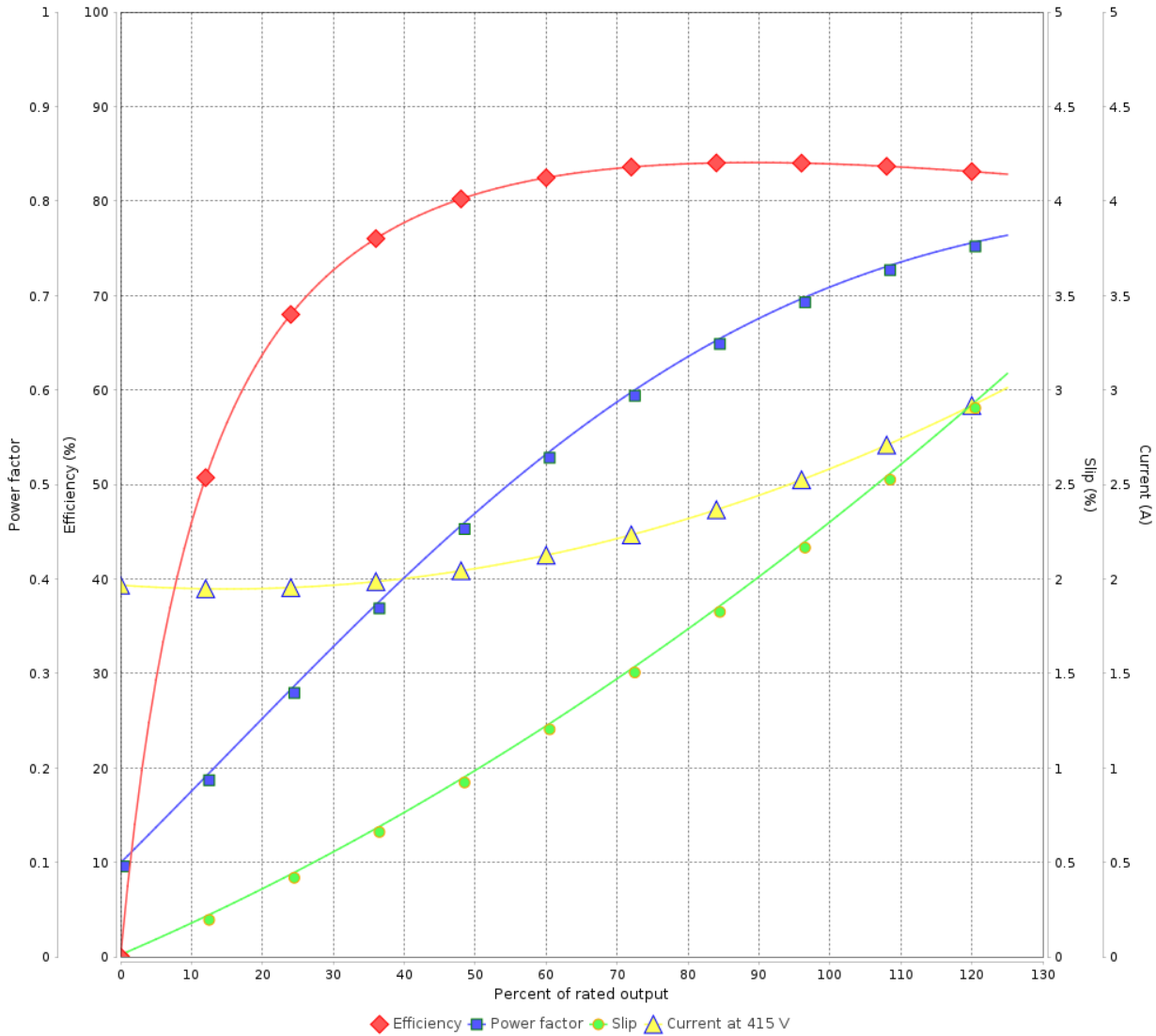


Customer :

Product line : W22 P Base NEMA Premium  
Efficiency Three-Phase

Product code : 13128964

LOAD PERFORMANCE CURVE



Performance : 415 V 50 Hz 4P IE3

Rated current : 2.56 A  
LRC : 8.4  
Rated torque : 0.743 kgfm  
Locked rotor torque : 350 %  
Breakdown torque : 409 %  
Rated speed : 1465 rpm

Moment of inertia (J) : 0.0066 kgm<sup>2</sup>  
Duty cycle : Cont.(S1)  
Insulation class : F  
Service factor : 1.25  
Temperature rise : 80 K  
Design : B

Rev.	Changes Summary	Performed	Checked	Date
Performed by			Page 6 / 9	Revision
Checked by				
Date	26/10/2024			

# LOAD PERFORMANCE CURVE

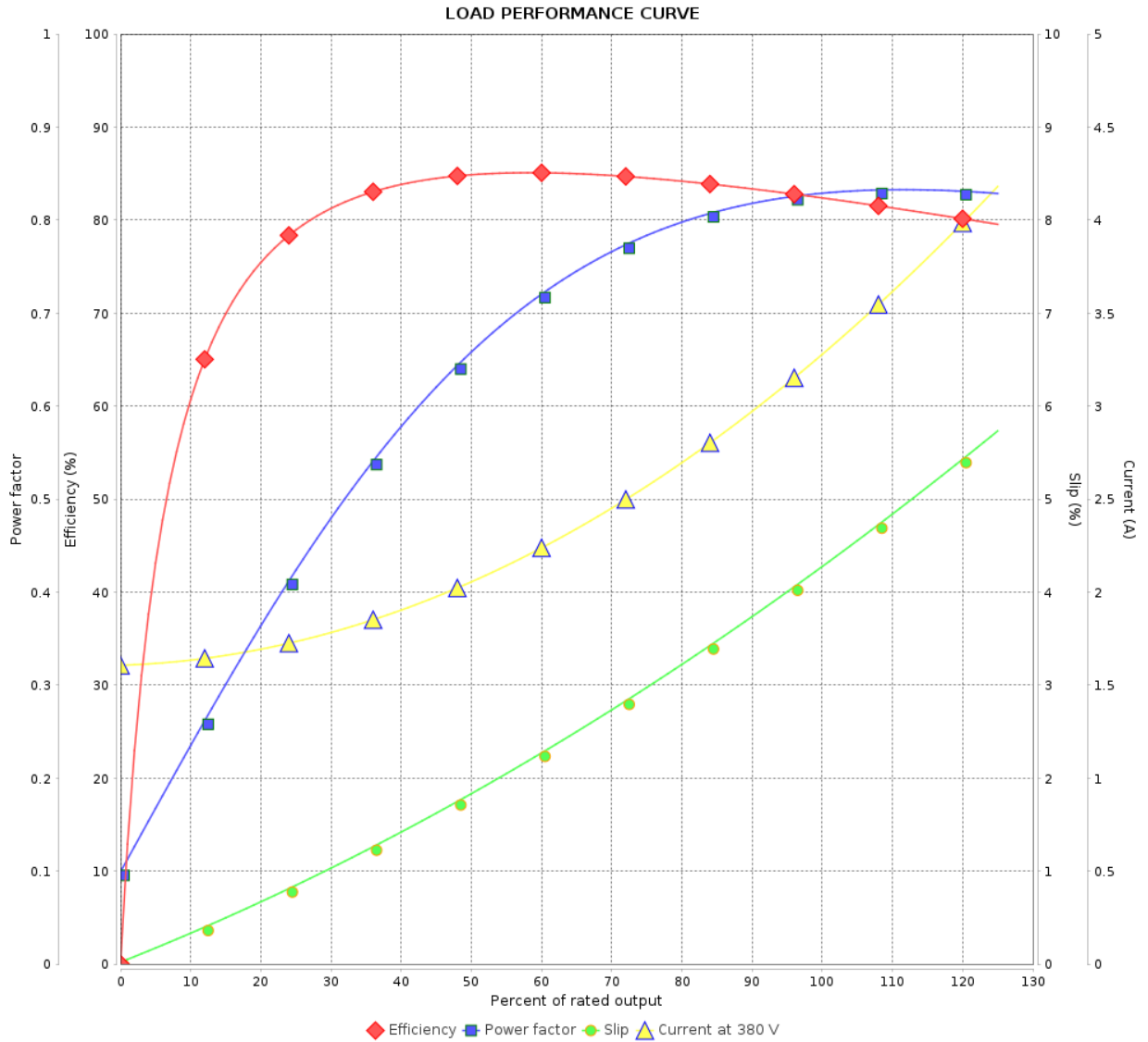
## Three Phase Induction Motor - Squirrel Cage



Customer :

Product line : W22 P Base NEMA Premium  
Efficiency Three-Phase

Product code : 13128964



Performance : 380 V 50 Hz 4P IE1

Rated current : 3.33 A  
 LRC : 6.0  
 Rated torque : 1.01 kgfm  
 Locked rotor torque : 220 %  
 Breakdown torque : 240 %  
 Rated speed : 1435 rpm

Moment of inertia (J) : 0.0066 kgm<sup>2</sup>  
 Duty cycle : Cont.(S1)  
 Insulation class : F  
 Service factor : 1.25  
 Temperature rise : 80 K  
 Design : B

Rev.	Changes Summary	Performed	Checked	Date
Performed by			Page 7 / 9	Revision
Checked by				
Date	26/10/2024			

# LOAD PERFORMANCE CURVE

Three Phase Induction Motor - Squirrel Cage

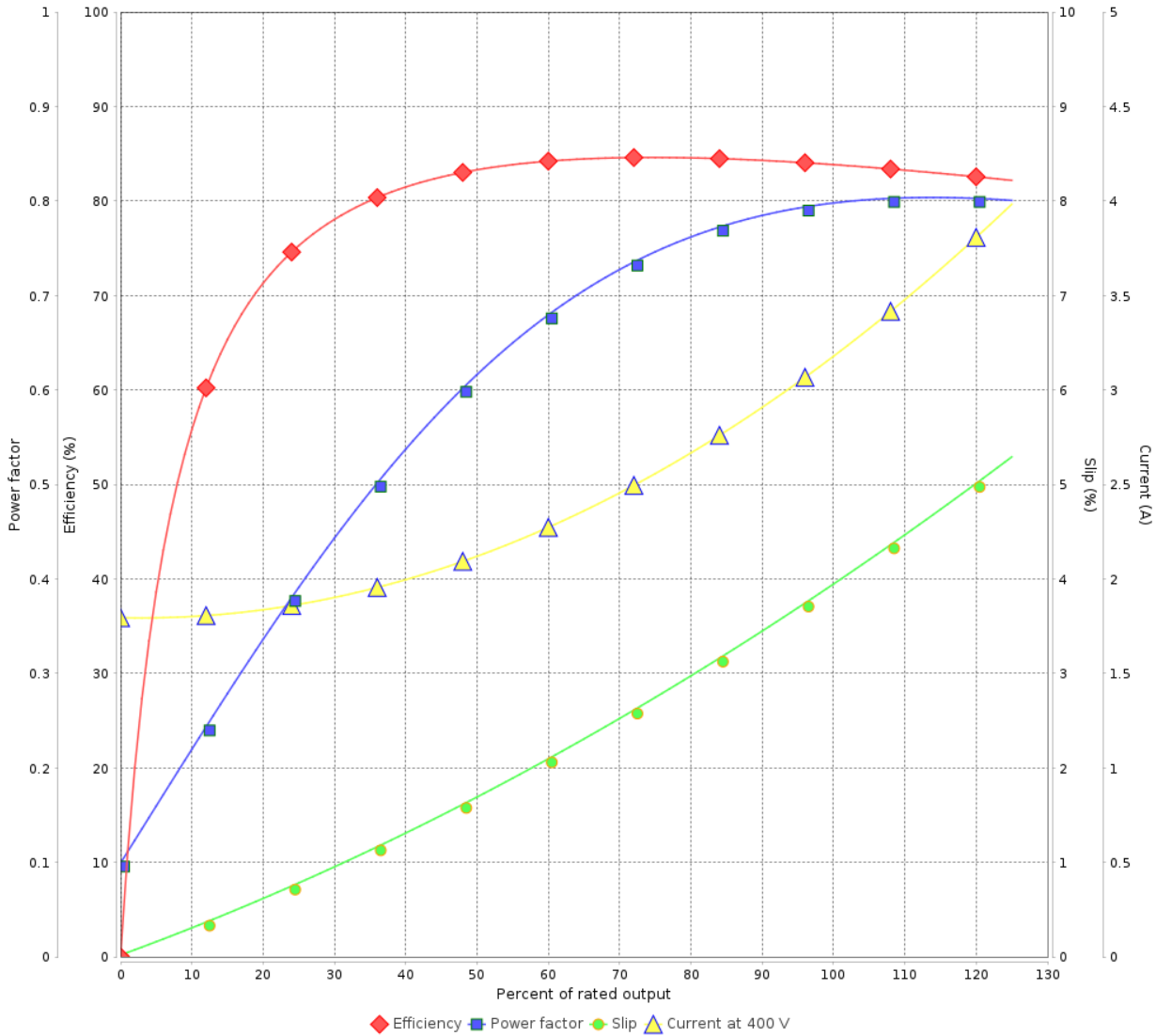


Customer :

Product line : W22 P Base NEMA Premium  
Efficiency Three-Phase

Product code : 13128964

LOAD PERFORMANCE CURVE



Performance : 400 V 50 Hz 4P IE2

Rated current : 3.22 A  
LRC : 6.6  
Rated torque : 1.01 kgfm  
Locked rotor torque : 229 %  
Breakdown torque : 260 %  
Rated speed : 1440 rpm

Moment of inertia (J) : 0.0066 kgm<sup>2</sup>  
Duty cycle : Cont.(S1)  
Insulation class : F  
Service factor : 1.25  
Temperature rise : 80 K  
Design : B

Rev.	Changes Summary	Performed	Checked	Date
Performed by			Page 8 / 9	Revision
Checked by				
Date	26/10/2024			



# LOAD PERFORMANCE CURVE

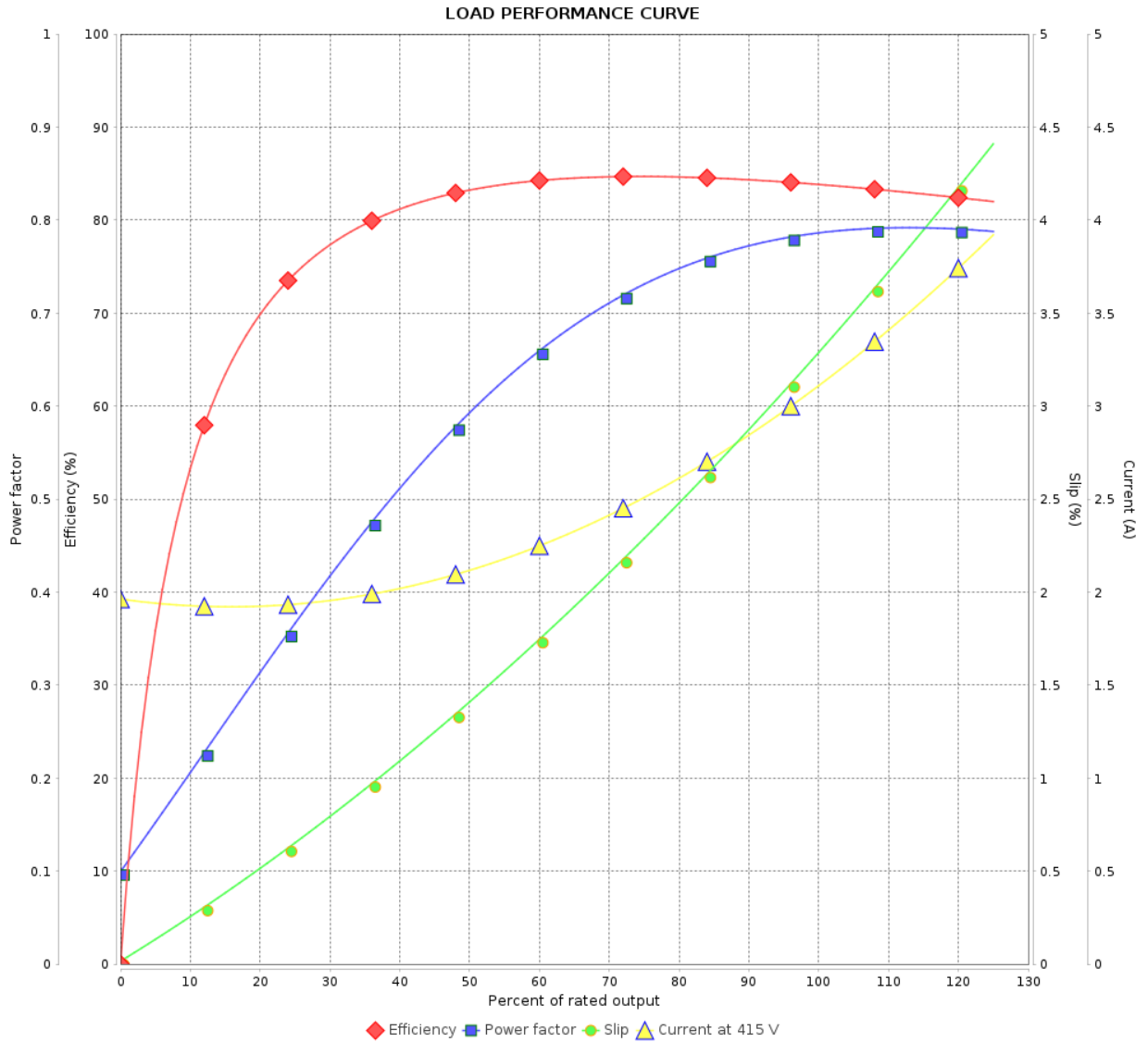
## Three Phase Induction Motor - Squirrel Cage



Customer :

Product line : W22 P Base NEMA Premium  
Efficiency Three-Phase

Product code : 13128964

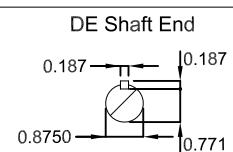
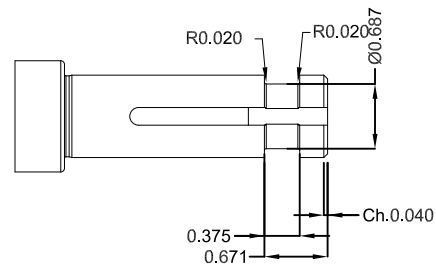
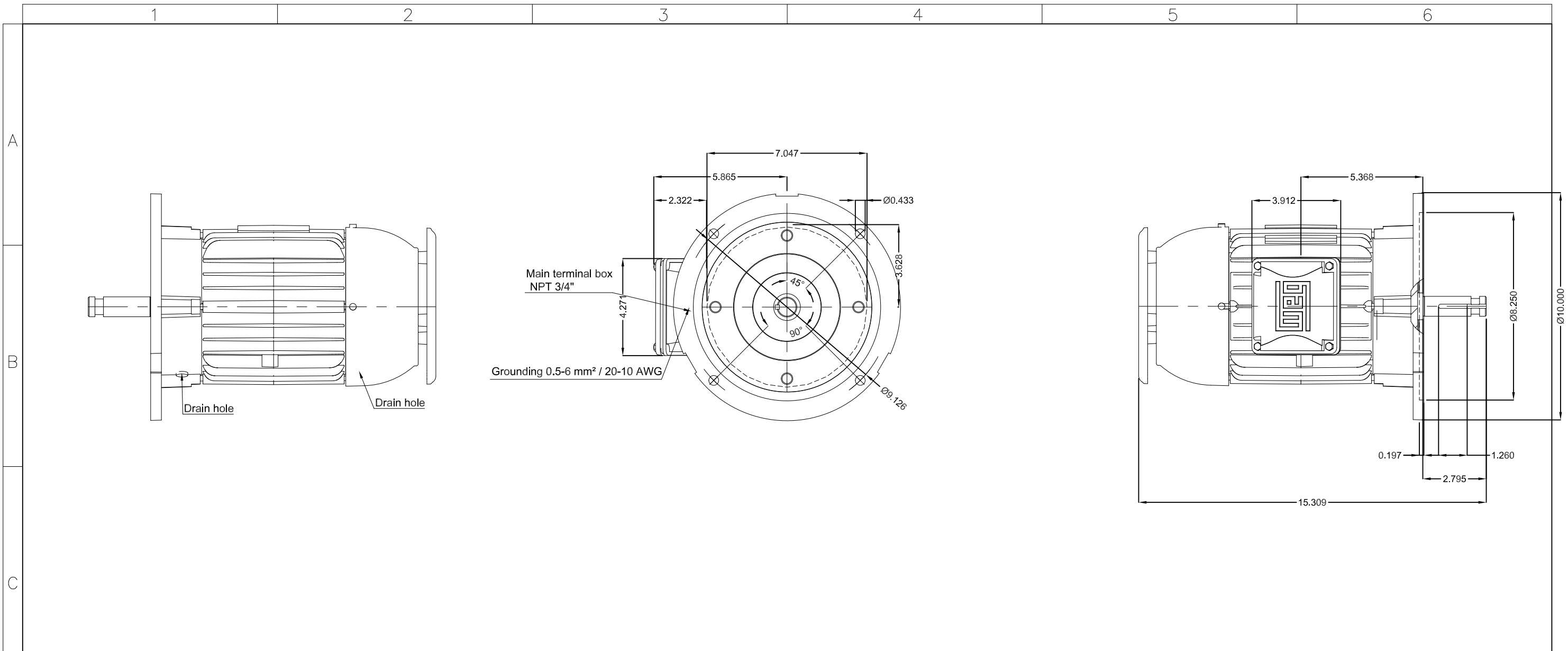


Performance : 415 V 50 Hz 4P IE2

Rated current : 3.14 A  
LRC : 7.3  
Rated torque : 1.00 kgfm  
Locked rotor torque : 250 %  
Breakdown torque : 290 %  
Rated speed : 1450 rpm

Moment of inertia (J) : 0.0066 kgm<sup>2</sup>  
Duty cycle : Cont.(S1)  
Insulation class : F  
Service factor : 1.25  
Temperature rise : 80 K  
Design : B

Rev.	Changes Summary	Performed	Checked	Date
Performed by			Page	Revision
Checked by				
Date				



Color RAL 5009  
 Painting plan 207A  
 Mounting NEMA W-6  
 Mounting V1

2 HP 04 Poles 60 Hz										A	
HYBRISUSER										00	
ECM	LOC	SUMMARY OF MODIFICATIONS					EXECUTED	CHECKED	RELEASED	DATE	VER
EXECUTED	HYBRISUSER	THREE PH. MOTOR W22 P. BASE NEMA PREM. EFF.					EXECUTED	CHECKED	RELEASED	DATE	VER
CHECKED		FRAME 145HP IP55 TEFC					EXECUTED	CHECKED	RELEASED	DATE	VER
RELEASED							EXECUTED	CHECKED	RELEASED	DATE	VER
REL. DATE							EXECUTED	CHECKED	RELEASED	DATE	VER
						PREVIEW		WDD 00			
						SHEET /					