

DATA SHEET

Three Phase Induction Motor - Squirrel Cage



Customer :				
Product line : Three-Phase		Product code : 13737501		
Frame : 56H	Insulation class : F	Cooling method : IC01 - ODP	Mounting : F-1	
Duty cycle : Cont.(S1)	Ambient temperature : -20°C to +40°C	Rotation ¹ : Both (CW and CCW)	Starting method : Direct On Line	
Altitude : 1000 m.a.s.l.	Design : A	Approx. weight ³ : 20.3 kg	Moment of inertia (J) : 0.0060 kgm ²	
Output [HP]	3			
Poles	4			
Frequency [Hz]	60			
Rated voltage [V]	575			
Rated current [A]	3.18			
L. R. Amperes [A]	24.1			
LRC [A]	7.6x(Code K)			
No load current [A]	1.68			
Rated speed [RPM]	1735			
Slip [%]	3.61			
Rated torque [kgfm]	1.25			
Locked rotor torque [%]	270			
Breakdown torque [%]	300			
Service factor	1.15			
Temperature rise	80 K			
Locked rotor time	21s (cold) 12s (hot)			
Noise level ²	52.0 dB(A)			
Efficiency (%)	25%			
	50%	86.5		
	75%	86.5		
	100%	86.9		
Power Factor	25%			
	50%	0.59		
	75%	0.72		
	100%	0.80		
Bearing type : 6204 ZZ	Drive end	Non drive end	Foundation loads	
Sealing : Without			Max. traction : 111 kgf	
	Bearing Seal	Bearing Seal	Max. compression : 131 kgf	
Lubrication interval : -	-	-		
Lubricant amount : -	-	-		
Lubricant type : Mobil Polyrex EM				
Notes				
This revision replaces and cancel the previous one, which must be eliminated. (1) Looking the motor from the shaft end. (2) Measured at 1m and with tolerance of +3dB(A). (3) Approximate weight subject to changes after manufacturing process. (4) At 100% of full load.			These are average values based on tests with sinusoidal power supply, subject to the tolerances stipulated in NEMA MG-1.	
Rev.	Changes Summary		Performed	Checked
Performed by				
Checked by			Page	Revision
Date	17/05/2022		1 / 2	

LOAD PERFORMANCE CURVE

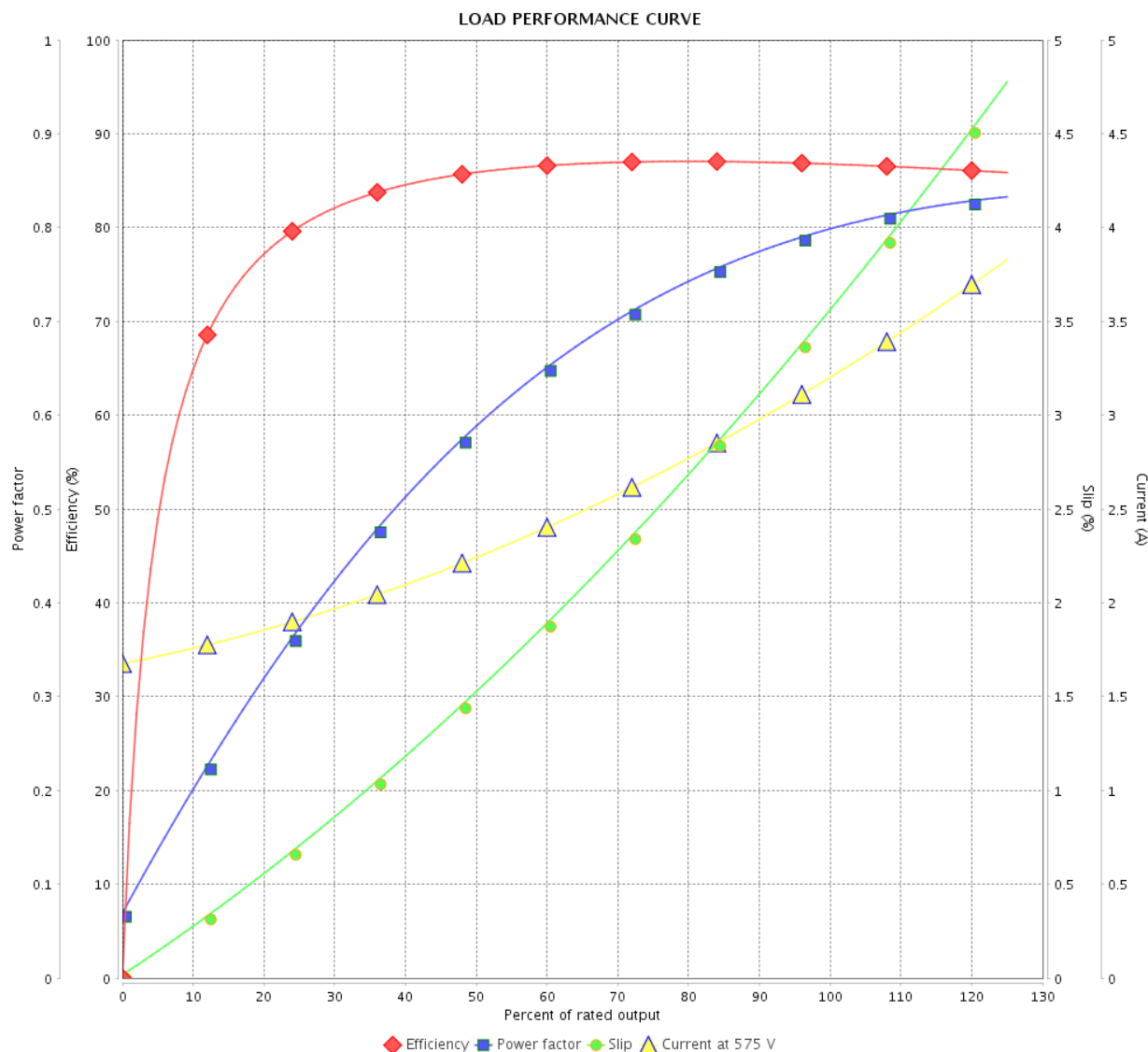
Three Phase Induction Motor - Squirrel Cage



Customer :

Product line : Three-Phase

Product code : 13737501

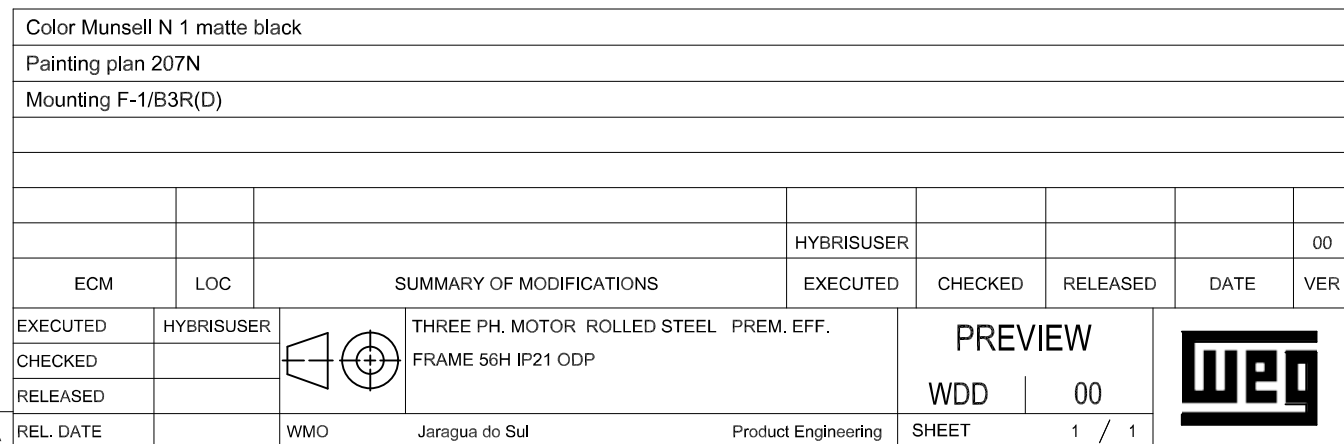
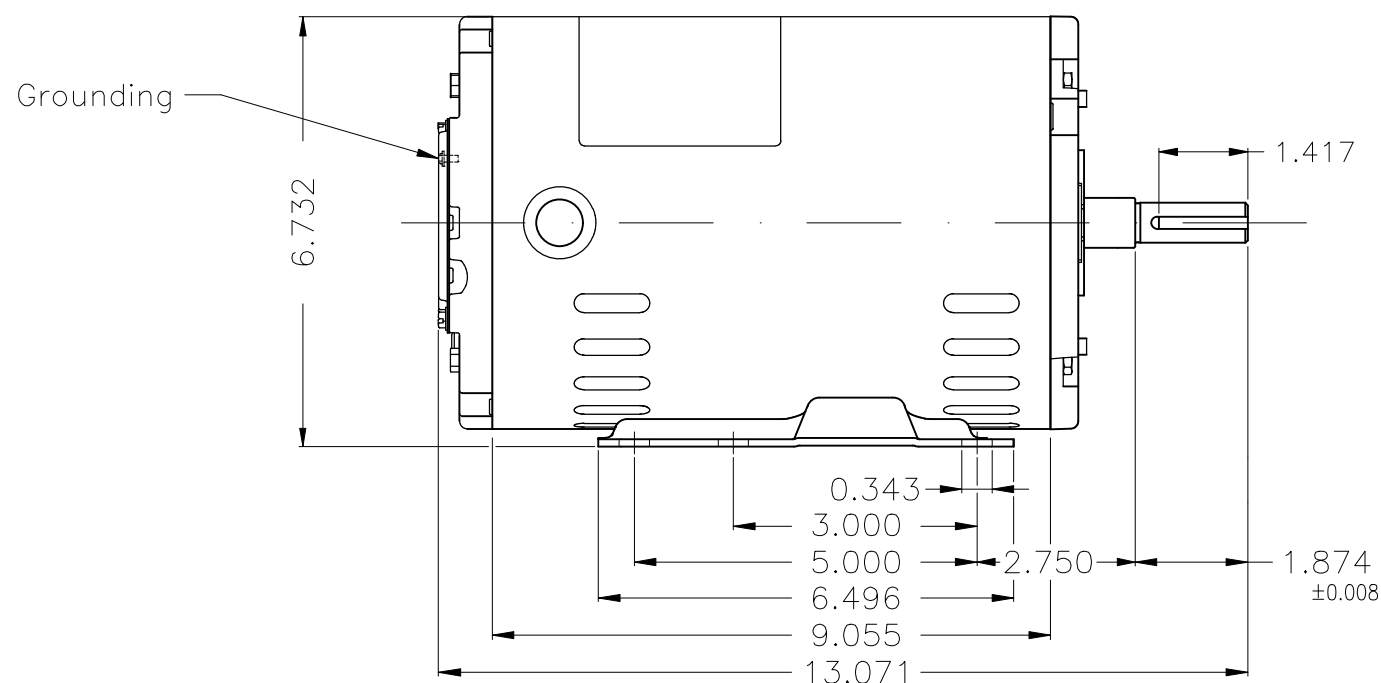


Performance : 575 V 60 Hz 4P

Rated current : 3.18 A
 LRC : 7.6
 Rated torque : 1.25 kgfm
 Locked rotor torque : 270 %
 Breakdown torque : 300 %
 Rated speed : 1735 rpm

Moment of inertia (J) : 0.0060 kgm²
 Duty cycle : Cont.(S1)
 Insulation class : F
 Service factor : 1.15
 Temperature rise : 80 K
 Design : A

Rev.	Changes Summary		Performed	Checked	Date
Performed by				Page	Revision
Checked by				2 / 2	
Date					



WEG's property. Forbidden reproduction without previous authorization.