

DATA SHEET

Three Phase Induction Motor - Squirrel Cage



Customer :				
Product line		: Standard Efficiency Three-Phase	Product code :	13505169
Frame	: 56H	Cooling method	: IC01 - ODP	
Insulation class	: F	Mounting	: F-1	
Duty cycle	: Cont.(S1)	Rotation ¹	: Both (CW and CCW)	
Ambient temperature	: -20°C to +40°C	Starting method	: Direct On Line	
Altitude	: 1000 m.a.s.l.	Approx. weight ³	: 15.0 kg	
Design	: A	Moment of inertia (J)	: 0.0040 kgm ²	
Output [HP]	3			
Poles	2			
Frequency [Hz]	60			
Rated voltage [V]	575			
Rated current [A]	3.11			
L. R. Amperes [A]	21.8			
LRC [A]	7.0x(Code J)			
No load current [A]	1.28			
Rated speed [RPM]	3450			
Slip [%]	4.17			
Rated torque [kgfm]	0.631			
Locked rotor torque [%]	220			
Breakdown torque [%]	250			
Service factor	1.15			
Temperature rise	80 K			
Locked rotor time	14s (cold) 8s (hot)			
Noise level ²	62.0 dB(A)			
Efficiency (%)	25%			
	50%	80.0		
	75%	81.5		
	100%	81.5		
Power Factor	25%			
	50%	0.70		
	75%	0.82		
	100%	0.87		
Bearing type	: Drive end 6204 ZZ Non drive end 6202 ZZ	Foundation loads		
Sealing	: Without Bearing Seal Without Bearing Seal	Max. traction : 43 kgf		
		Max. compression : 58 kgf		
Lubrication interval	: -			
Lubricant amount	: -			
Lubricant type	: Mobil Polyrex EM			
Notes				
This revision replaces and cancel the previous one, which must be eliminated. (1) Looking the motor from the shaft end. (2) Measured at 1m and with tolerance of +3dB(A). (3) Approximate weight subject to changes after manufacturing process. (4) At 100% of full load.				
These are average values based on tests with sinusoidal power supply, subject to the tolerances stipulated in NEMA MG-1.				
Rev.	Changes Summary		Performed	Checked
Date				
Performed by			Page	Revision
Checked by			1 / 2	
Date	17/05/2022			

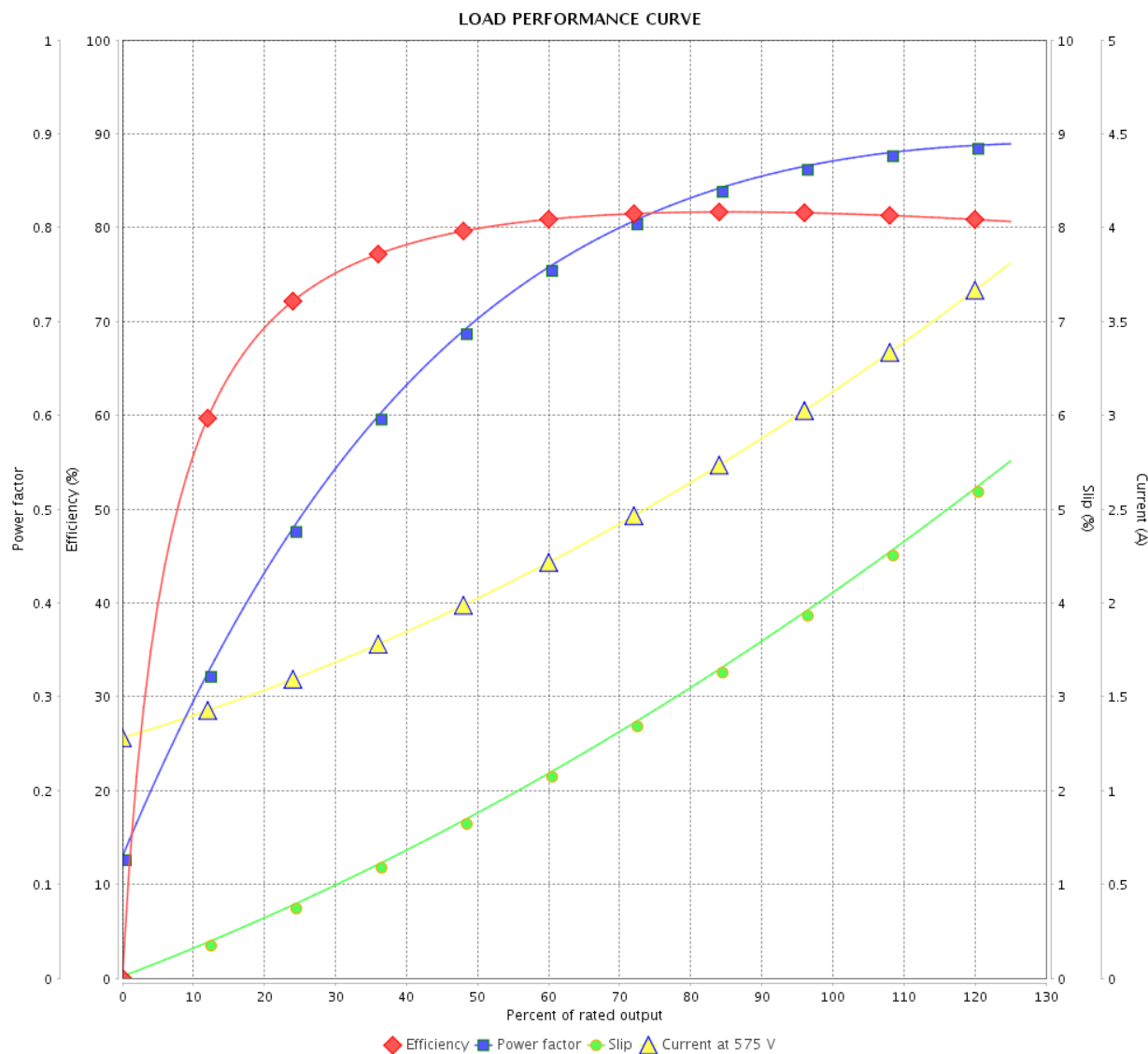
LOAD PERFORMANCE CURVE

Three Phase Induction Motor - Squirrel Cage



Customer :

Product line : Standard Efficiency Three-Phase Product code : 13505169

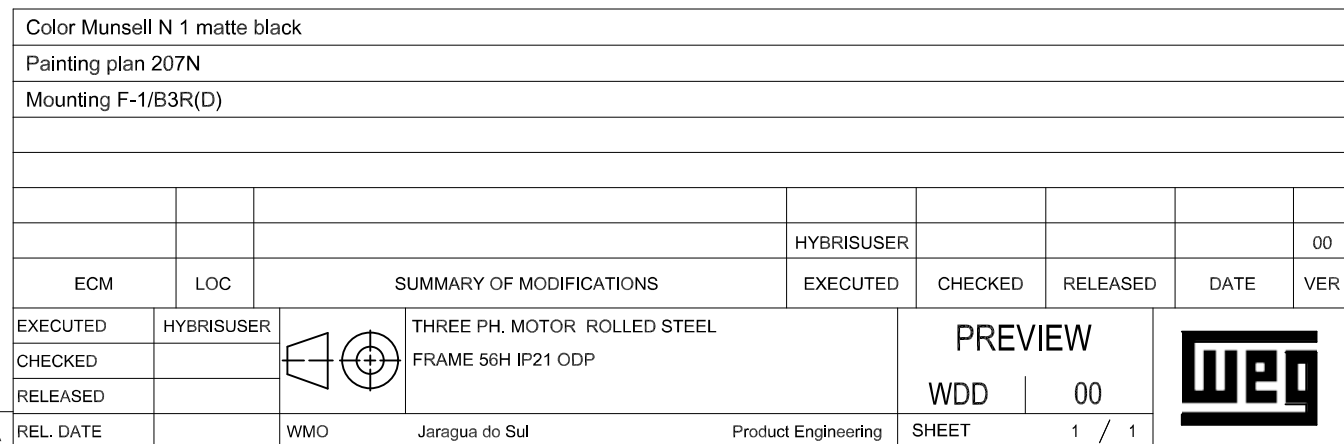
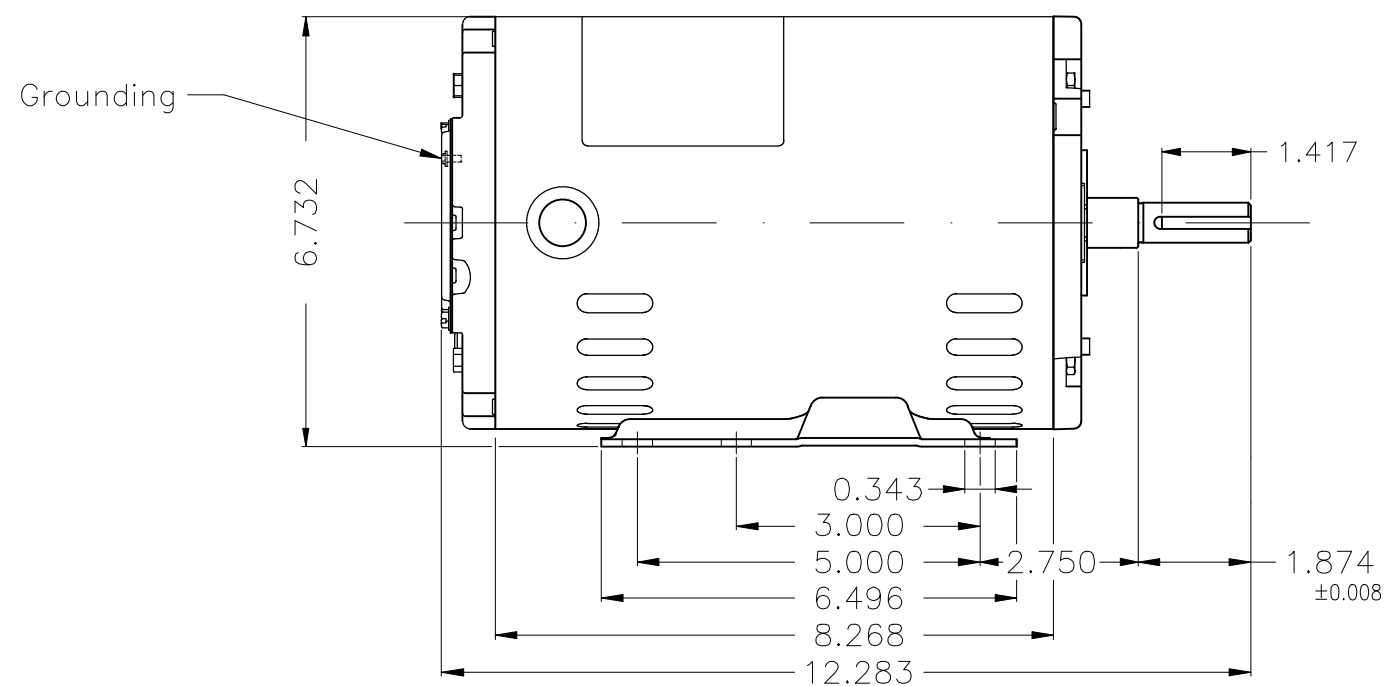


Performance : 575 V 60 Hz 2P

Rated current : 3.11 A
 LRC : 7.0
 Rated torque : 0.631 kgfm
 Locked rotor torque : 220 %
 Breakdown torque : 250 %
 Rated speed : 3450 rpm

Moment of inertia (J) : 0.0040 kgm²
 Duty cycle : Cont.(S1)
 Insulation class : F
 Service factor : 1.15
 Temperature rise : 80 K
 Design : A

Rev.	Changes Summary		Performed	Checked	Date
Performed by				Page	Revision
Checked by				2 / 2	
Date					



WEG's property. Forbidden reproduction without previous authorization.