

DATA SHEET

Three Phase Induction Motor - Squirrel Cage



Customer :					
Product line		: Three-Phase	Product code : 13737502		
Frame	: 56H	Cooling method	: IC01 - ODP		
Insulation class	: F	Mounting	: F-1		
Duty cycle	: Cont.(S1)	Rotation ¹	: Both (CW and CCW)		
Ambient temperature	: -20°C to +40°C	Starting method	: Direct On Line		
Altitude	: 1000 m.a.s.l.	Approx. weight ³	: 20.3 kg		
Design	: A	Moment of inertia (J)	: 0.0060 kgm ²		
Output [HP]	3	2	2		
Poles	4	4	4		
Frequency [Hz]	60	50	50		
Rated voltage [V]	230/460	190/380	220/415		
Rated current [A]	7.94/3.97	6.96/3.48	6.75/3.58		
L. R. Amperes [A]	60.3/30.2	55.0/27.5	58.1/30.8		
LRC [A]	7.6x(Code K)	7.9x(Code L)	8.6x(Code M)		
No load current [A]	4.20/2.10	4.19/2.10	4.88/2.59		
Rated speed [RPM]	1735	1445	1455		
Slip [%]	3.61	3.67	3.00		
Rated torque [kgfm]	1.25	1.00	0.998		
Locked rotor torque [%]	270	320	400		
Breakdown torque [%]	300	370	450		
Service factor		1.15	1.15		
Temperature rise	80 K	80 K	80 K		
Locked rotor time	21s (cold) 12s (hot)	30s (cold) 17s (hot)	25s (cold) 14s (hot)		
Noise level ²	52.0 dB(A)	49.0 dB(A)	49.0 dB(A)		
Efficiency (%)	25%				
	50%	86.5	85.1	82.0	
	75%	86.5	86.6	85.0	
	100%	86.9	86.2	85.8	
Power Factor	25%				
	50%	0.59	0.54	0.45	
	75%	0.72	0.68	0.58	
	100%	0.80	0.76	0.68	
Bearing type	: Drive end 6204 ZZ Non drive end 6202 ZZ	Foundation loads			
Sealing	: Without Bearing Seal Without Bearing Seal	Max. traction	: 134 kgf		
		Max. compression	: 155 kgf		
Lubrication interval	: -				
Lubricant amount	: -				
Lubricant type	: Mobil Polyrex EM				
Notes USABLE @208V 8.79A SF 1.00 SFA 8.79A					
This revision replaces and cancel the previous one, which must be eliminated. (1) Looking the motor from the shaft end. (2) Measured at 1m and with tolerance of +3dB(A). (3) Approximate weight subject to changes after manufacturing process. (4) At 100% of full load.			These are average values based on tests with sinusoidal power supply, subject to the tolerances stipulated in NEMA MG-1.		
Rev.	Changes Summary		Performed	Checked	Date
Performed by					
Checked by				Page	Revision
Date	17/05/2022			1 / 4	

LOAD PERFORMANCE CURVE

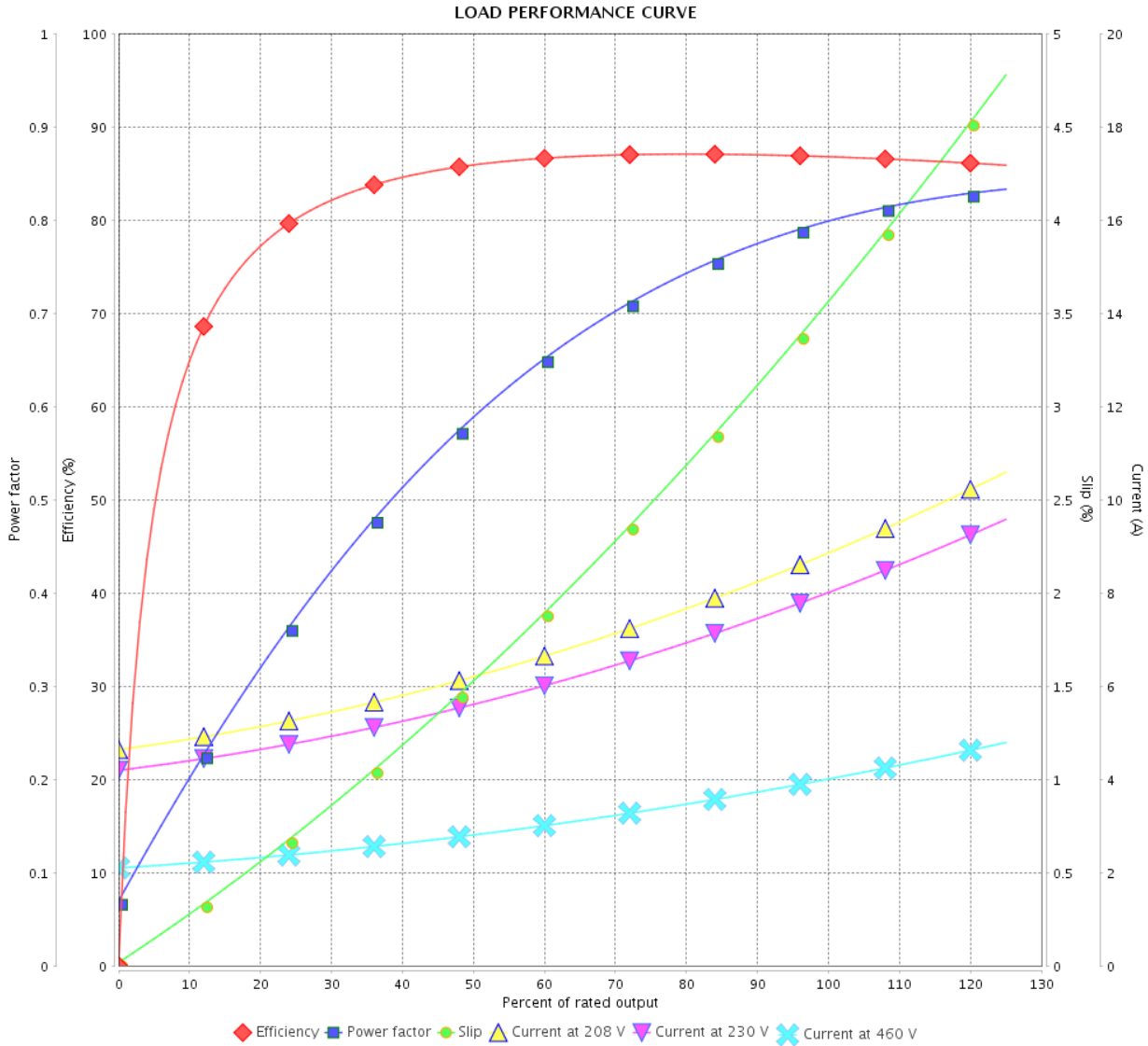
Three Phase Induction Motor - Squirrel Cage



Customer :

Product line : Three-Phase

Product code : 13737502



Performance : 230/460 V 60 Hz 4P

Rated current : 7.94/3.97 A
 LRC : 7.6
 Rated torque : 1.25 kgfm
 Locked rotor torque : 270 %
 Breakdown torque : 300 %
 Rated speed : 1735 rpm

Moment of inertia (J) : 0.0060 kgm²
 Duty cycle : Cont.(S1)
 Insulation class : F
 Service factor :
 Temperature rise : 80 K
 Design : A

Rev.	Changes Summary	Performed	Checked	Date
Performed by			Page	Revision
Checked by				
Date				

LOAD PERFORMANCE CURVE

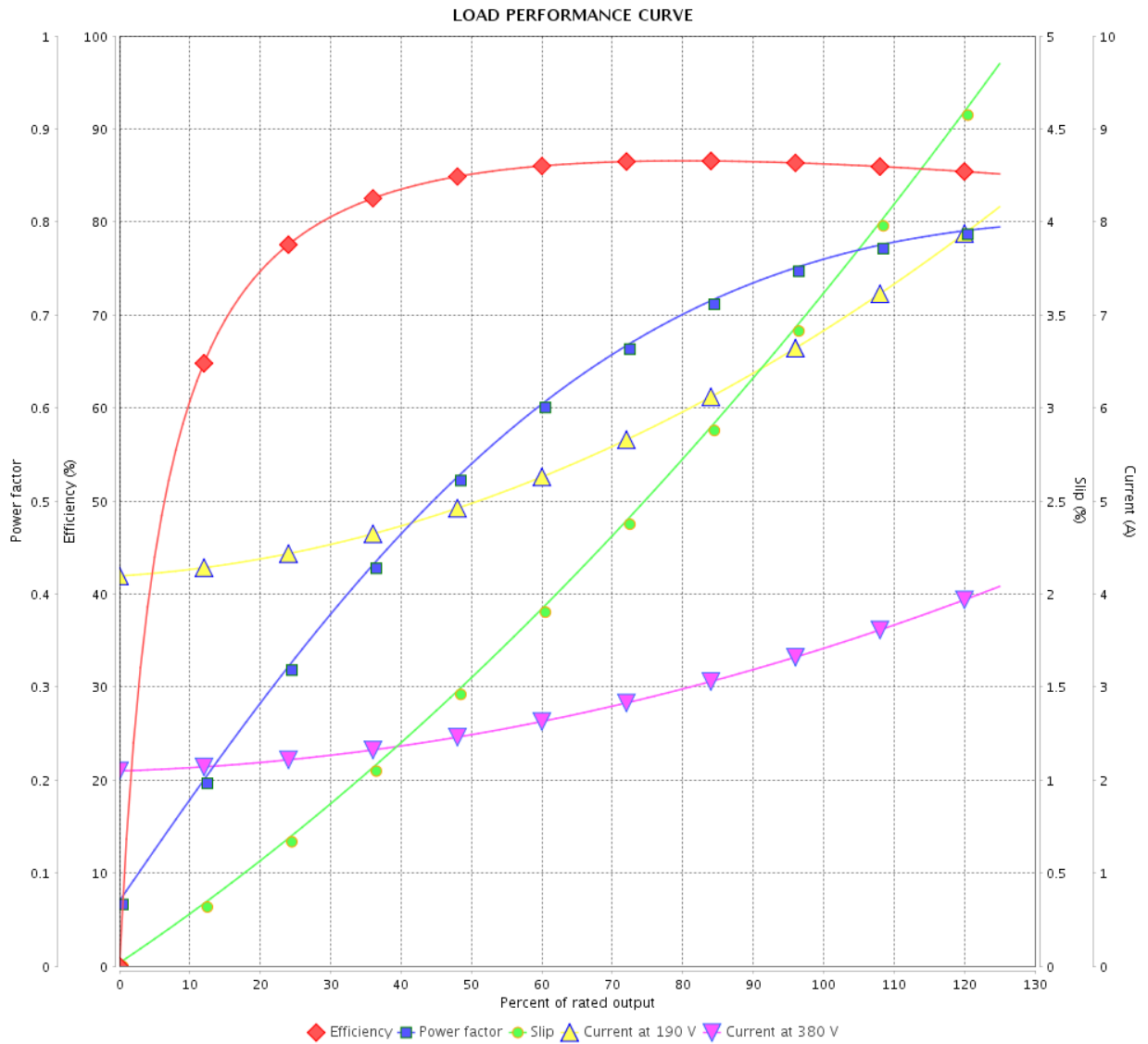
Three Phase Induction Motor - Squirrel Cage



Customer : _____

Product line : Three-Phase

Product code : 13737502



Performance : 190/380 V 50 Hz 4P

Rated current : 6.96/3.48 A
 LRC : 7.9
 Rated torque : 1.00 kgfm
 Locked rotor torque : 320 %
 Breakdown torque : 370 %
 Rated speed : 1445 rpm

Moment of inertia (J) : 0.0060 kgm²
 Duty cycle : Cont.(S1)
 Insulation class : F
 Service factor : 1.15
 Temperature rise : 80 K
 Design : A

Rev.	Changes Summary	Performed	Checked	Date
Performed by			Page	Revision
Checked by				
Date				

LOAD PERFORMANCE CURVE

Three Phase Induction Motor - Squirrel Cage

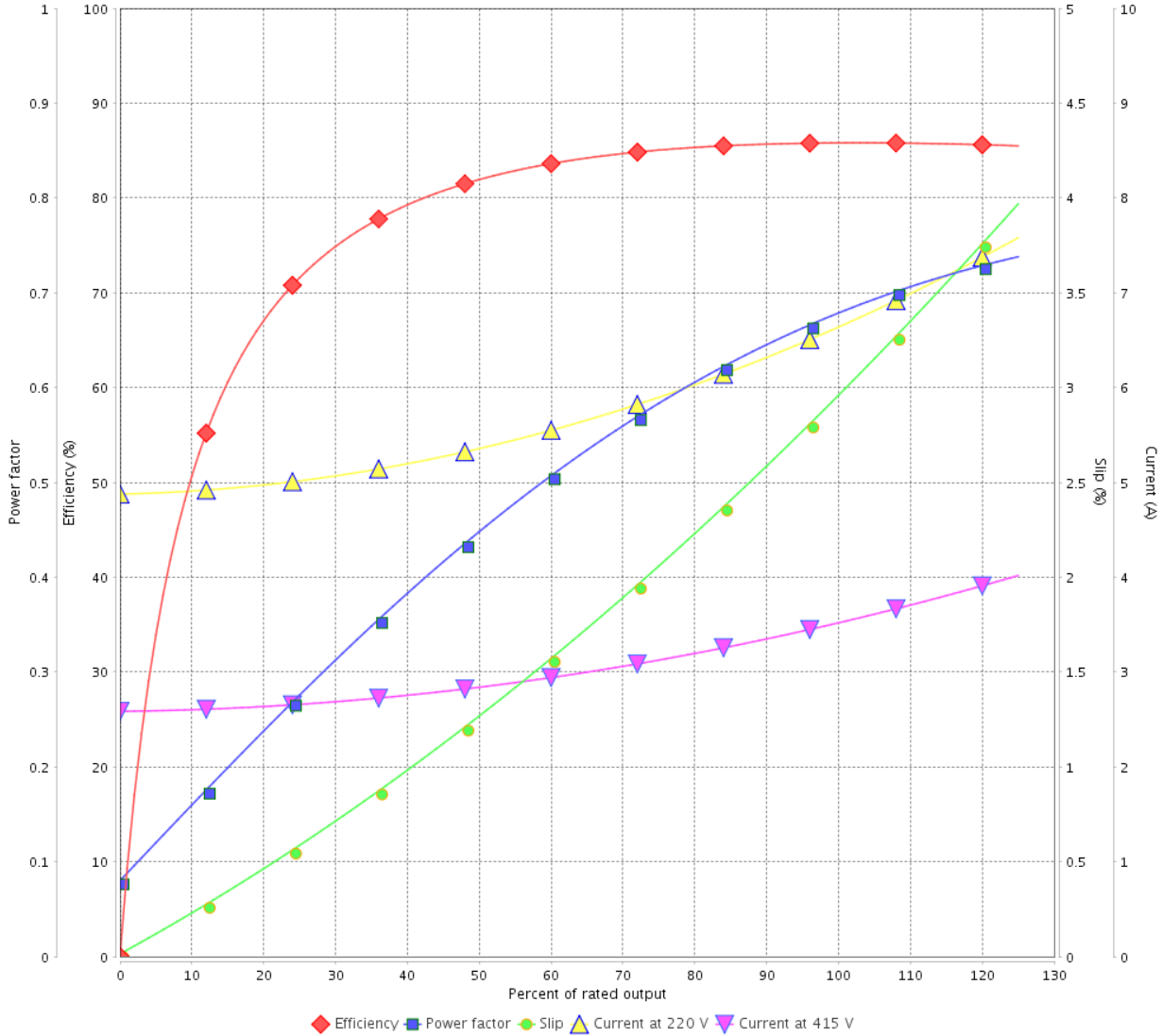


Customer :

Product line : Three-Phase

Product code : 13737502

LOAD PERFORMANCE CURVE



Performance : 220/415 V 50 Hz 4P

Rated current : 6.75/3.58 A
 LRC : 8.6
 Rated torque : 0.998 kgfm
 Locked rotor torque : 400 %
 Breakdown torque : 450 %
 Rated speed : 1455 rpm

Moment of inertia (J) : 0.0060 kgm²
 Duty cycle : Cont.(S1)
 Insulation class : F
 Service factor : 1.15
 Temperature rise : 80 K
 Design : A

Rev.	Changes Summary	Performed	Checked	Date
Performed by			Page	Revision
Checked by				
Date				

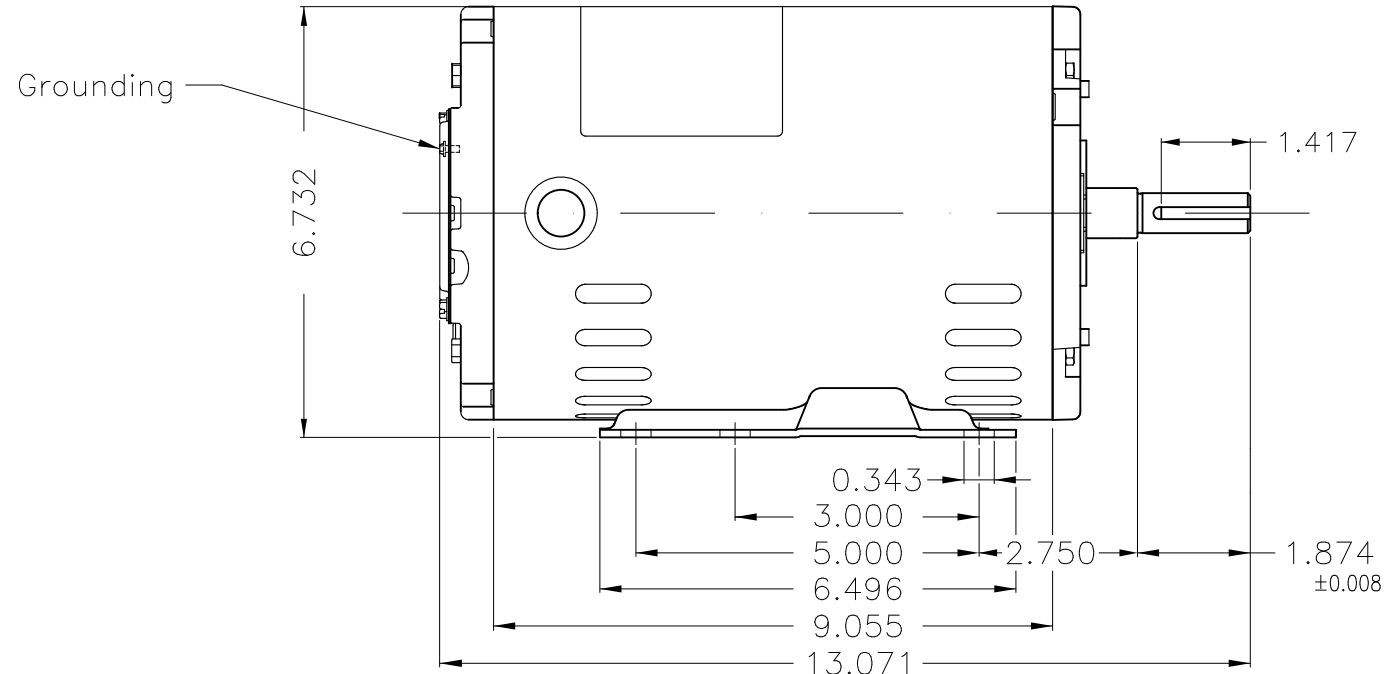
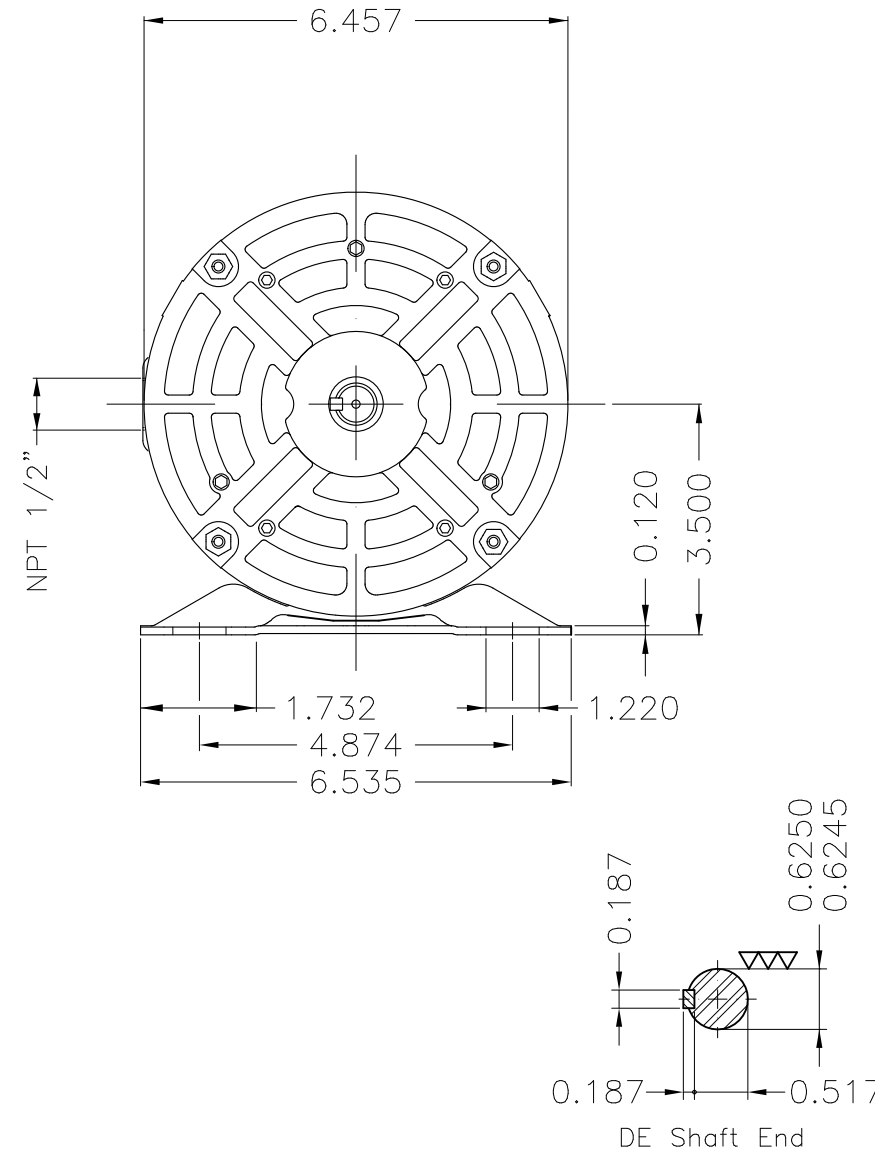
A

B

C

D

E



Color Munsell N 1 matte black								
Painting plan 207N								
Mounting F-1/B3R(D)								
HYBRISUSER 00								
ECM	LOC	SUMMARY OF MODIFICATIONS		EXECUTED	CHECKED	RELEASED	DATE	VER
EXECUTED	HYBRISUSER	THREE PH. MOTOR ROLLED STEEL PREM. EFF.		PREVIEW		WDD 00		
CHECKED		FRAME 56H IP21 ODP		WDD 00		WEG		
RELEASED								
REL. DATE	WMO	Jaragua do Sul	Product Engineering	SHEET		1 / 1		

3 HP 04 Poles 60 Hz

A