

# DATA SHEET

## Three Phase Induction Motor - Squirrel Cage



Customer :

Product line : Standard Efficiency Three-Phase Product code : 13505147

Frame	: 56H	Cooling method	: IC01 - ODP
Insulation class	: F	Mounting	: F-1
Duty cycle	: Cont.(S1)	Rotation <sup>1</sup>	: Both (CW and CCW)
Ambient temperature	: -20°C to +40°C	Starting method	: Direct On Line
Altitude	: 1000 m.a.s.l.	Approx. weight <sup>3</sup>	: 15.0 kg
Design	: A	Moment of inertia (J)	: 0.0040 kgm <sup>2</sup>

Output [HP]	3	2	2
Poles	2	2	2
Frequency [Hz]	60	50	50
Rated voltage [V]	230/460	190/380	220/415
Rated current [A]	7.78/3.89	6.30/3.15	6.02/3.19
L. R. Amperes [A]	54.5/27.2	48.5/24.3	51.1/27.1
LRC [A]	7.0x(Code J)	7.7x(Code J)	8.5x(Code L)
No load current [A]	3.20/1.60	3.20/1.60	4.15/2.20
Rated speed [RPM]	3450	2875	2900
Slip [%]	4.17	4.17	3.33
Rated torque [kgfm]	0.631	0.505	0.501
Locked rotor torque [%]	220	260	320
Breakdown torque [%]	250	300	360
Service factor		1.15	1.15
Temperature rise	80 K	80 K	80 K
Locked rotor time	14s (cold) 8s (hot)	0s (cold) 0s (hot)	0s (cold) 0s (hot)
Noise level <sup>2</sup>	62.0 dB(A)	60.0 dB(A)	60.0 dB(A)
Efficiency (%)	25%		
	50%	80.0	76.8
	75%	81.5	80.7
	100%	81.5	81.7
Power Factor	25%		
	50%	0.70	0.56
	75%	0.82	0.71
	100%	0.87	0.80

Bearing type	: Drive end	Non drive end	Foundation loads
	: 6204 ZZ	6202 ZZ	
Sealing	: Without	Without	Max. traction : 50 kgf
	: Bearing Seal	Bearing Seal	
Lubrication interval	: -	-	Max. compression : 65 kgf
Lubricant amount	: -	-	
Lubricant type	: Mobil Polyrex EM		

### Notes

USABLE @208V 8.60A SF 1.00 SFA 8.60A

This revision replaces and cancel the previous one, which must be eliminated.

- (1) Looking the motor from the shaft end.
- (2) Measured at 1m and with tolerance of +3dB(A).
- (3) Approximate weight subject to changes after manufacturing process.
- (4) At 100% of full load.

These are average values based on tests with sinusoidal power supply, subject to the tolerances stipulated in NEMA MG-1.

Rev.	Changes Summary	Performed	Checked	Date
Performed by				
Checked by				
Date	17/05/2022			
		Page 1 / 4		Revision

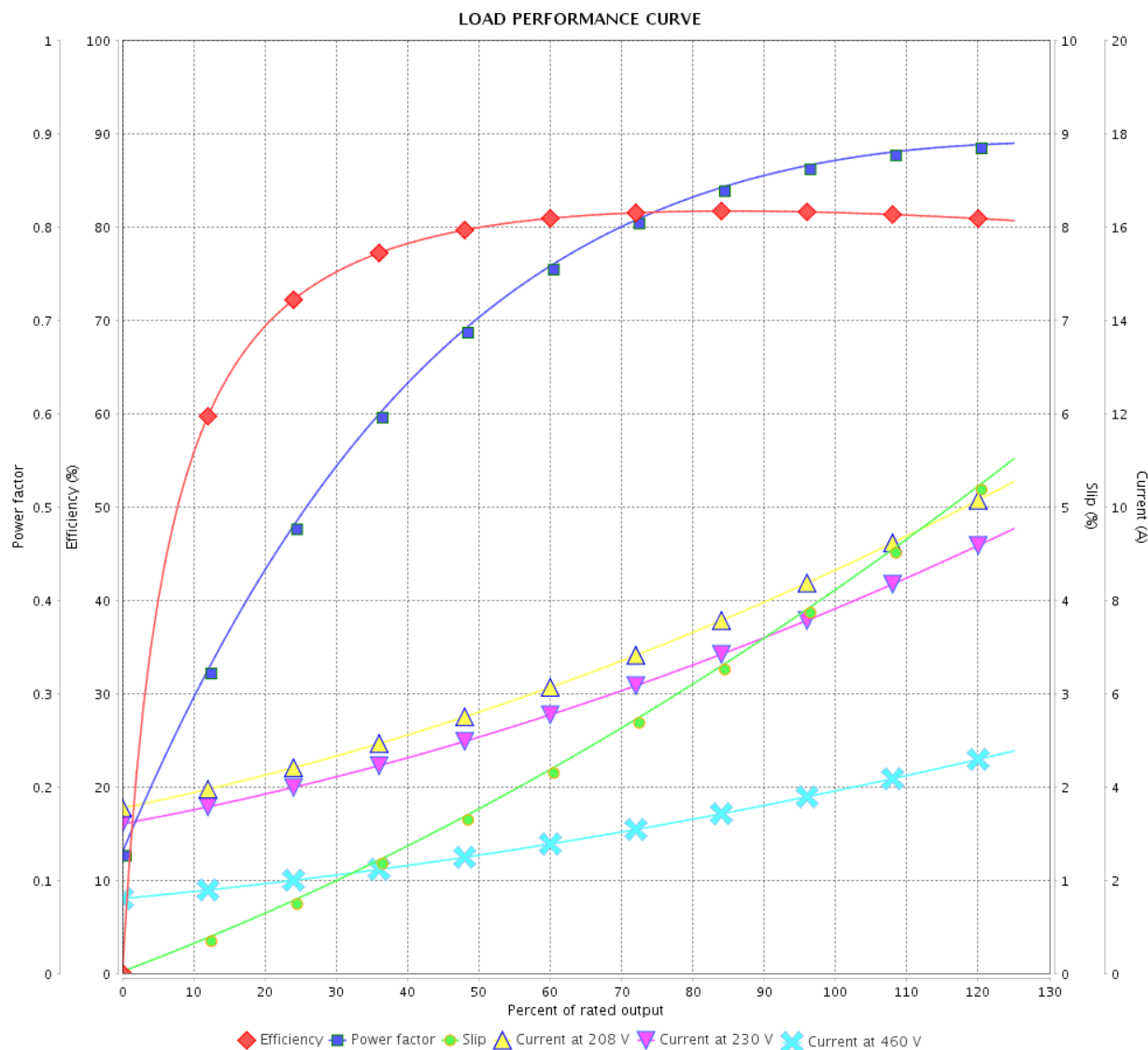
# LOAD PERFORMANCE CURVE

## Three Phase Induction Motor - Squirrel Cage



Customer :

Product line : Standard Efficiency Three-Phase Product code : 13505147



Performance : 230/460 V 60 Hz 2P

Rated current : 7.78/3.89 A  
 LRC : 7.0  
 Rated torque : 0.631 kgfm  
 Locked rotor torque : 220 %  
 Breakdown torque : 250 %  
 Rated speed : 3450 rpm

Moment of inertia (J) : 0.0040 kgm<sup>2</sup>  
 Duty cycle : Cont.(S1)  
 Insulation class : F  
 Service factor :  
 Temperature rise : 80 K  
 Design : A

Rev.	Changes Summary		Performed	Checked	Date
Performed by				Page	Revision
Checked by				2 / 4	
Date					

# LOAD PERFORMANCE CURVE

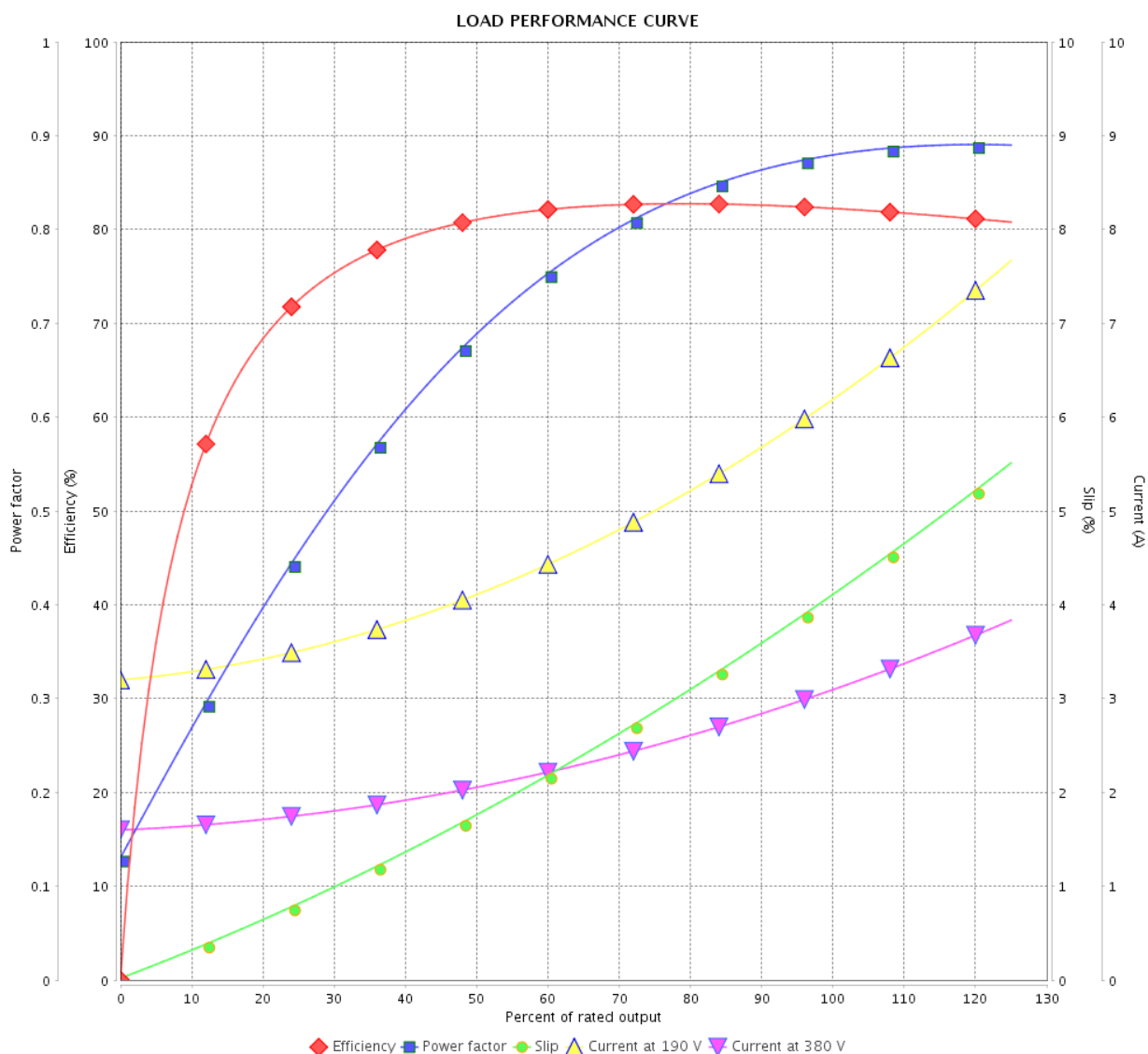
## Three Phase Induction Motor - Squirrel Cage



Customer :

Product line : Standard Efficiency Three-Phase

Product code : 13505147



Performance : 190/380 V 50 Hz 2P

Rated current : 6.30/3.15 A  
 LRC : 7.7  
 Rated torque : 0.505 kgfm  
 Locked rotor torque : 260 %  
 Breakdown torque : 300 %  
 Rated speed : 2875 rpm

Moment of inertia (J) : 0.0040 kgm<sup>2</sup>  
 Duty cycle : Cont.(S1)  
 Insulation class : F  
 Service factor : 1.15  
 Temperature rise : 80 K  
 Design : A

Rev.	Changes Summary	Performed	Checked	Date
Performed by		Page 3 / 4Revision		
Checked by				
Date	17/05/2022			

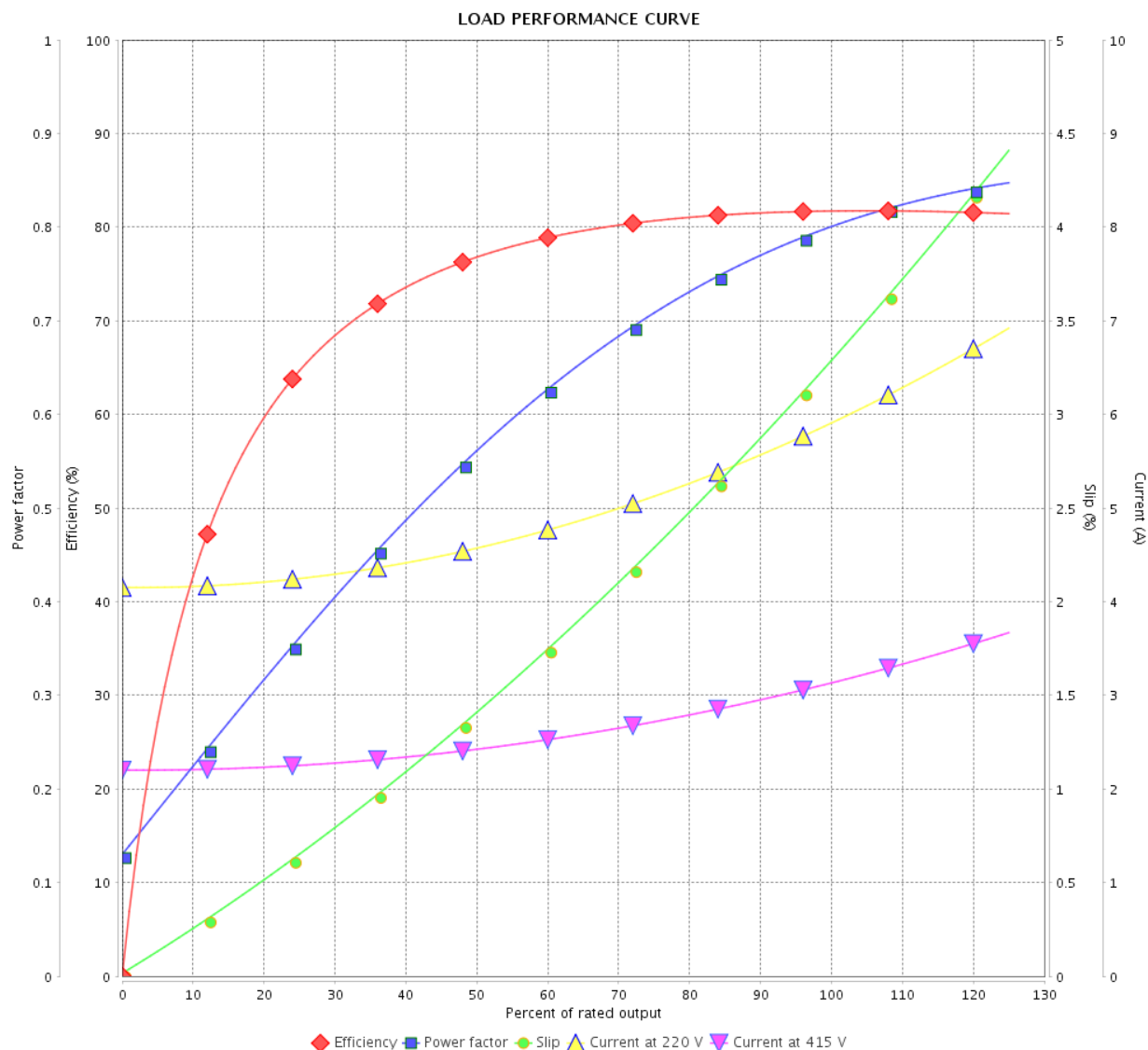
# LOAD PERFORMANCE CURVE

## Three Phase Induction Motor - Squirrel Cage



Customer :

Product line : Standard Efficiency Three-Phase Product code : 13505147

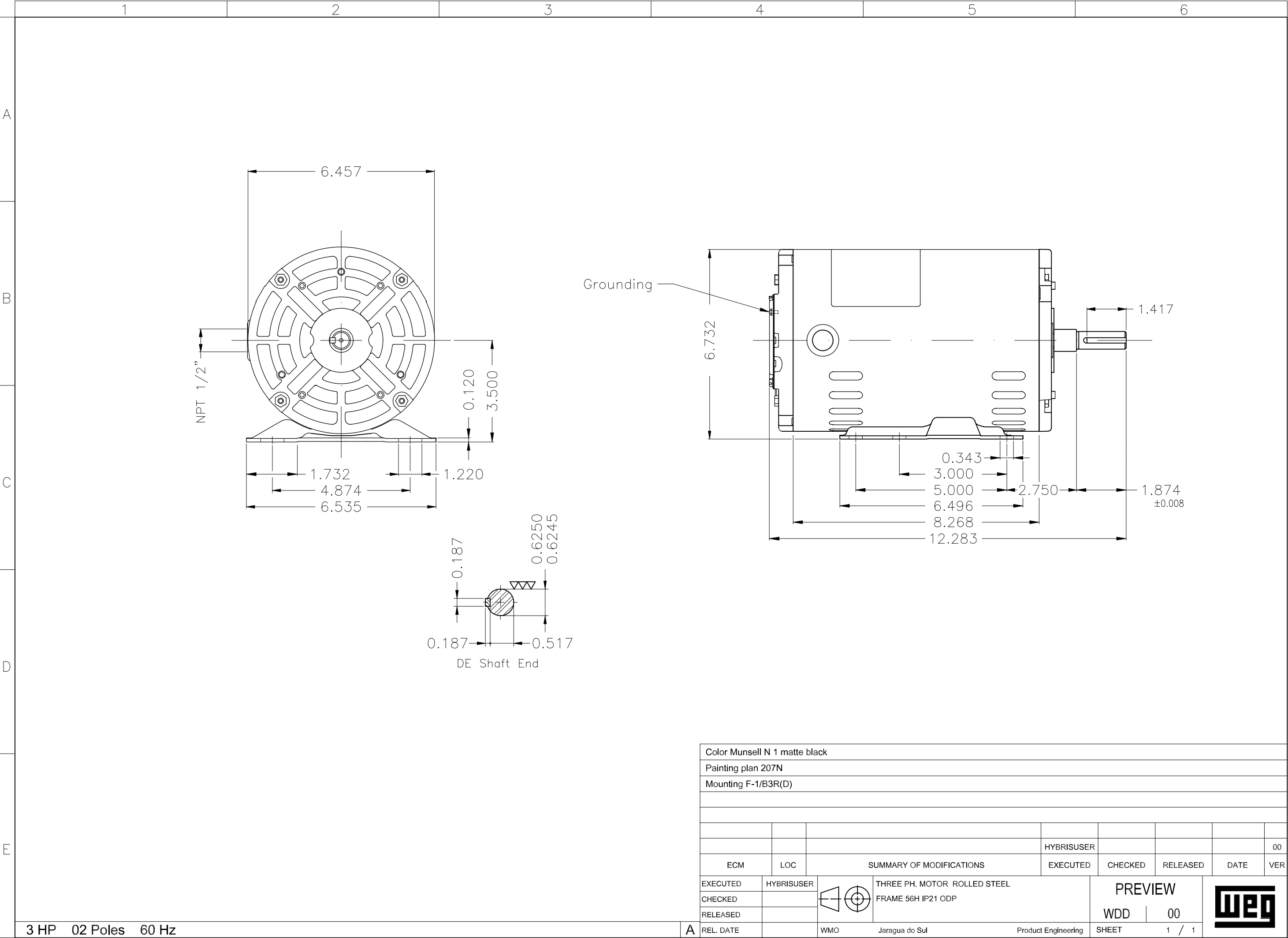


Performance : 220/415 V 50 Hz 2P

Rated current : 6.02/3.19 A  
 LRC : 8.5  
 Rated torque : 0.501 kgfm  
 Locked rotor torque : 320 %  
 Breakdown torque : 360 %  
 Rated speed : 2900 rpm

Moment of inertia (J) : 0.0040 kgm<sup>2</sup>  
 Duty cycle : Cont.(S1)  
 Insulation class : F  
 Service factor : 1.15  
 Temperature rise : 80 K  
 Design : A

Rev.	Changes Summary		Performed	Checked	Date
Performed by				Page 4 / 4	Revision
Checked by					
Date	17/05/2022				



Color Munsell N 1 matte black									
Painting plan 207N									
Mounting F-1/B3R(D)									