

# DATA SHEET

## Three Phase Induction Motor - Squirrel Cage



Customer	:			
Product line	: Standard Efficiency Three-Phase	Product code : 13505146		
Frame	: 56H	Cooling method : IC01 - ODP		
Insulation class	: F	Mounting : F-1		
Duty cycle	: Cont.(S1)	Rotation <sup>1</sup> : Both (CW and CCW)		
Ambient temperature	: -20°C to +40°C	Starting method : Direct On Line		
Altitude	: 1000 m.a.s.l.	Approx. weight <sup>3</sup> : 14.9 kg		
Design	: A	Moment of inertia (J) : 0.0044 kgm <sup>2</sup>		
Output [HP]		2		
Poles		4		
Frequency [Hz]		60		
Rated voltage [V]		575		
Rated current [A]		2.49		
L. R. Amperes [A]		16.7		
LRC [A]		6.7x(Code K)		
No load current [A]		1.60		
Rated speed [RPM]		1740		
Slip [%]		3.33		
Rated torque [kgfm]		0.834		
Locked rotor torque [%]		240		
Breakdown torque [%]		250		
Service factor		1.15		
Temperature rise		80 K		
Locked rotor time		12s (cold) 7s (hot)		
Noise level <sup>2</sup>		52.0 dB(A)		
Efficiency (%)	25%			
	50%	75.5		
	75%	78.5		
	100%	78.5		
Power Factor	25%			
	50%	0.54		
	75%	0.68		
	100%	0.77		
Bearing type	: <u>Drive end</u> 6204 ZZ <u>Non drive end</u> 6202 ZZ	Foundation loads		
Sealing	: Without Without Bearing Seal Bearing Seal	Max. traction : 59 kgf Max. compression : 74 kgf		
Lubrication interval	: - -			
Lubricant amount	: - -			
Lubricant type	: Mobil Polyrex EM			
Notes				
This revision replaces and cancel the previous one, which must be eliminated. (1) Looking the motor from the shaft end. (2) Measured at 1m and with tolerance of +3dB(A). (3) Approximate weight subject to changes after manufacturing process. (4) At 100% of full load.		These are average values based on tests with sinusoidal power supply, subject to the tolerances stipulated in NEMA MG-1.		
Rev.	Changes Summary	Performed	Checked	Date
Performed by				
Checked by			Page	Revision
Date	17/05/2022		1 / 2	

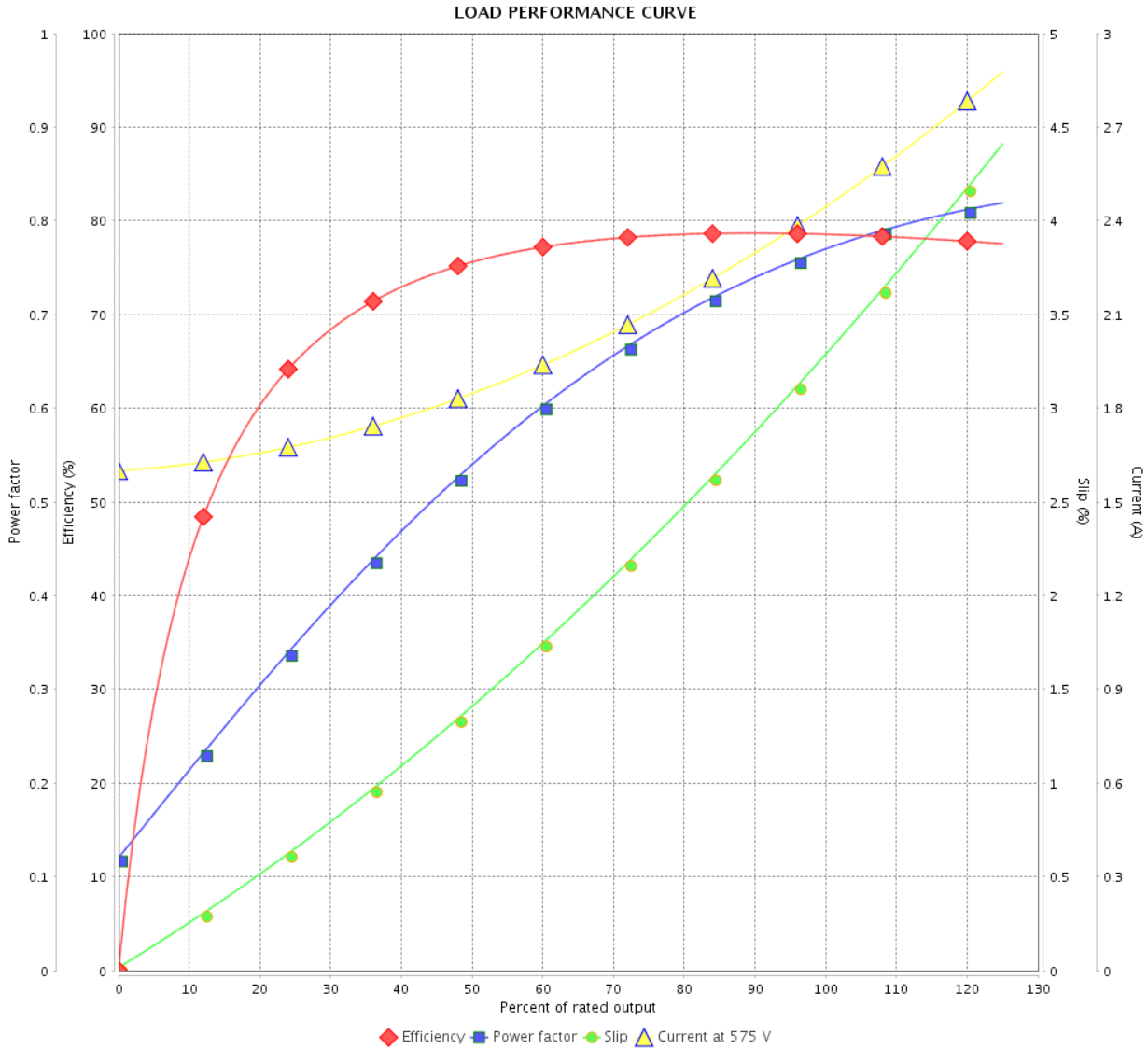
# LOAD PERFORMANCE CURVE

Three Phase Induction Motor - Squirrel Cage



Customer :

Product line : Standard Efficiency Three-Phase Product code : 13505146



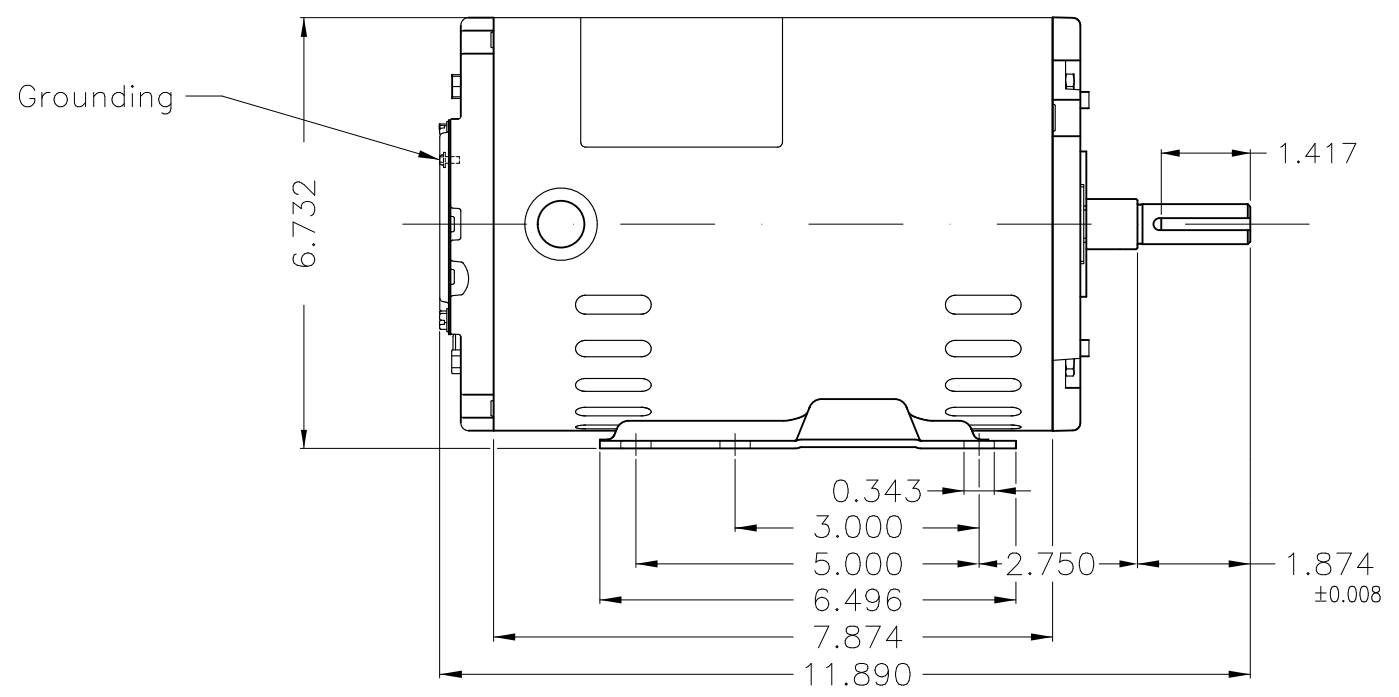
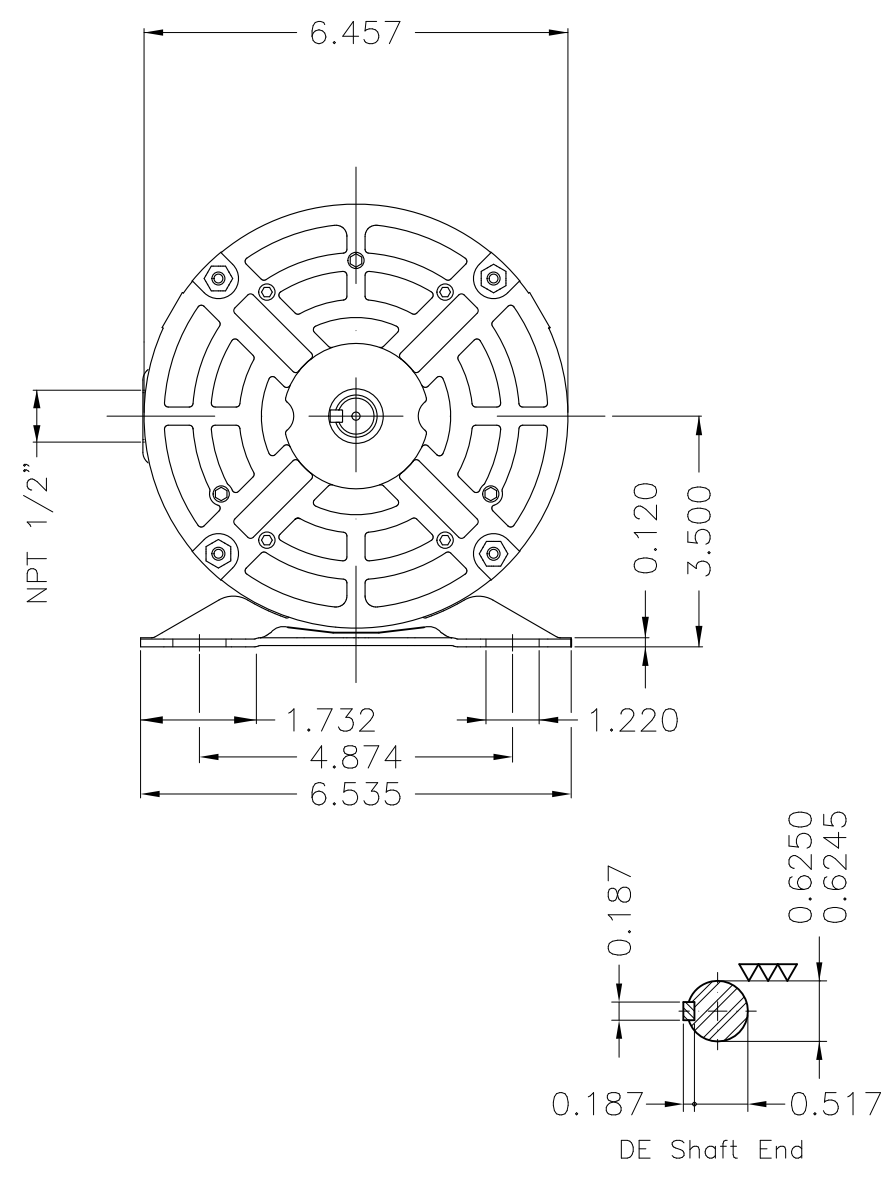
Performance : 575 V 60 Hz 4P

Rated current	: 2.49 A	Moment of inertia (J)	: 0.0044 kgm <sup>2</sup>
LRC	: 6.7	Duty cycle	: Cont.(S1)
Rated torque	: 0.834 kgfm	Insulation class	: F
Locked rotor torque	: 240 %	Service factor	: 1.15
Breakdown torque	: 250 %	Temperature rise	: 80 K
Rated speed	: 1740 rpm	Design	: A

Rev.	Changes Summary	Performed	Checked	Date
Performed by			Page 2 / 2	Revision
Checked by				
Date	17/05/2022			

1 2 3 4 5 6

A  
B  
C  
D  
E



Color Munsell N 1 matte black									
Painting plan 207N									
Mounting F-1/B3R(D)									
					HYBRISUSER	00			
ECM	LOC	SUMMARY OF MODIFICATIONS			EXECUTED	CHECKED	RELEASED	DATE	VER
EXECUTED	HYBRISUSER	THREE PH. MOTOR ROLLED STEEL				PREVIEW			
CHECKED		FRAME 56H IP21 ODP				WDD	00		
RELEASED						SHEET	1 / 1		
REL. DATE		WMO	Jaragua do Sul	Product Engineering					

2 HP 04 Poles 60 Hz

A