

DATA SHEET

Single Phase Induction Motor - Squirrel Cage



Customer :					
Product line : Single-Phase		Product code : 13724247			
Frame : 56H	Insulation class : F	Cooling method : IC01 - ODP	Mounting : F-1		
Duty cycle : Cont.(S1)	Ambient temperature : -20°C to +40°C	Rotation ¹ : Both (CW and CCW)	Starting method : Direct On Line		
Altitude : 1000 m.a.s.l.	Design : L	Approx. weight ³ : 24.8 kg	Moment of inertia (J) : 0.0068 kgm ²		
Output [HP]	2				
Poles	4				
Frequency [Hz]	60				
Rated voltage [V]	115/208-230				
Rated current [A]	17.7/9.50-8.87				
L. R. Amperes [A]	115/61.7-57.7				
LRC [A]	6.5x(Code H)				
No load current [A]	6.20/2.67-3.10				
Rated speed [RPM]	1730				
Slip [%]	3.89				
Rated torque [kgfm]	0.839				
Locked rotor torque [%]	290				
Breakdown torque [%]	225				
Service factor					
Temperature rise	80 K				
Locked rotor time	32s (cold) 18s (hot)				
Noise level ²	52.0 dB(A)				
Efficiency (%)	25%				
	50%	83.0			
	75%	84.0			
	100%	84.5			
Power Factor	25%				
	50%	0.75			
	75%	0.83			
	100%	0.87			
Bearing type : 6204 ZZ	Drive end	Non drive end	Foundation loads		
Sealing : Without			Max. traction : 47 kgf		
	Bearing Seal	Bearing Seal	Max. compression : 72 kgf		
Lubrication interval : -	-	-			
Lubricant amount : -	-	-			
Lubricant type : Mobil Polyrex EM					
Notes					
This revision replaces and cancel the previous one, which must be eliminated. (1) Looking the motor from the shaft end. (2) Measured at 1m and with tolerance of +3dB(A). (3) Approximate weight subject to changes after manufacturing process. (4) At 100% of full load.			These are average values based on tests with sinusoidal power supply, subject to the tolerances stipulated in NEMA MG-1.		
Rev.	Changes Summary		Performed	Checked	Date
Performed by					
Checked by					
Date	17/05/2022			Page 1 / 2	Revision

LOAD PERFORMANCE CURVE

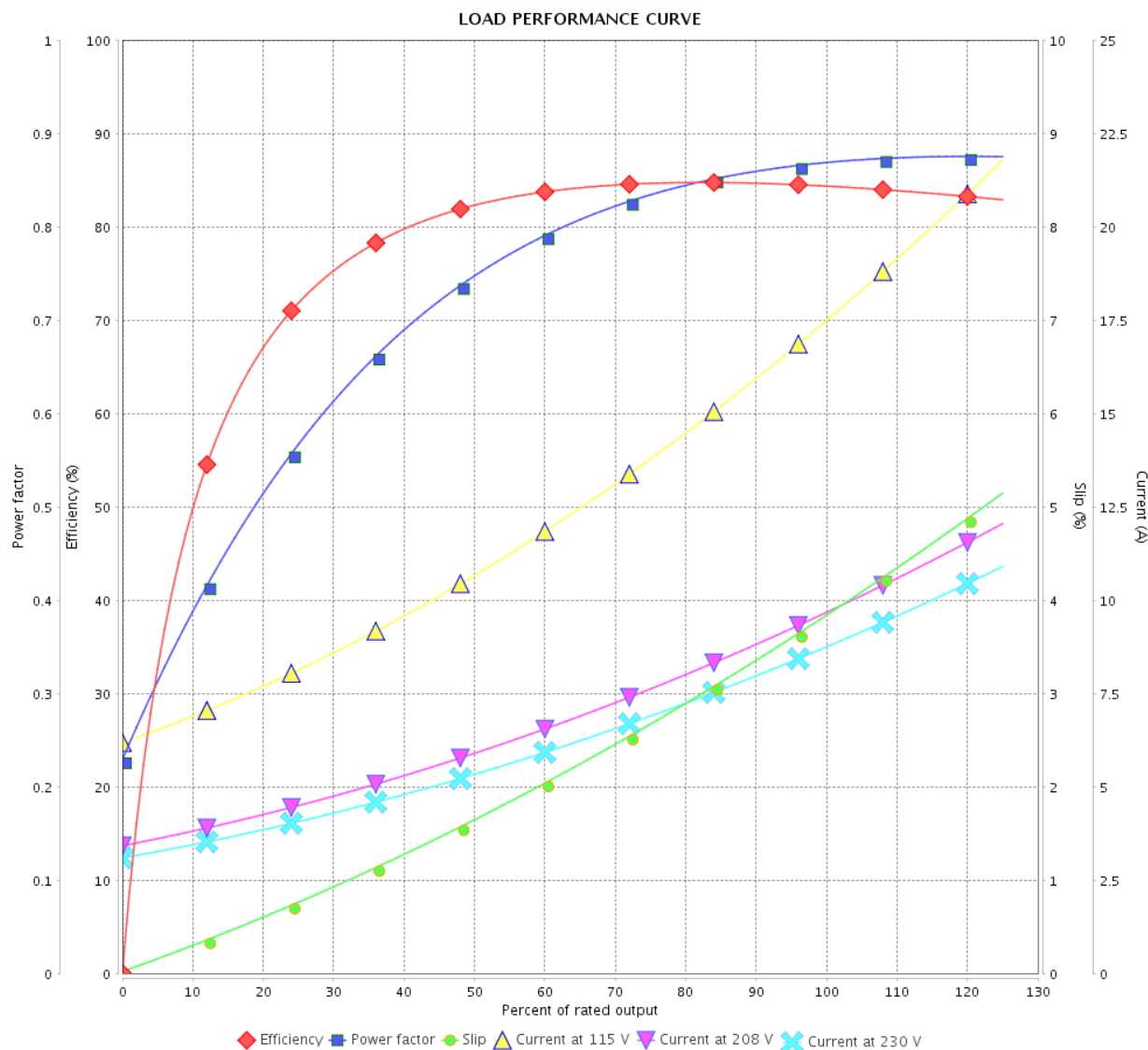
Single Phase Induction Motor - Squirrel Cage



Customer :

Product line : Single-Phase

Product code : 13724247

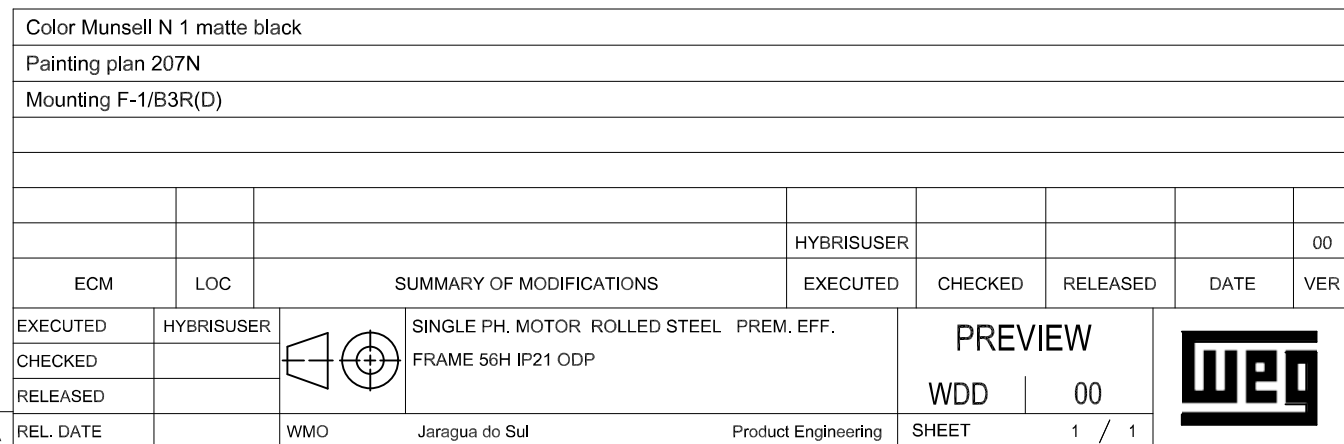
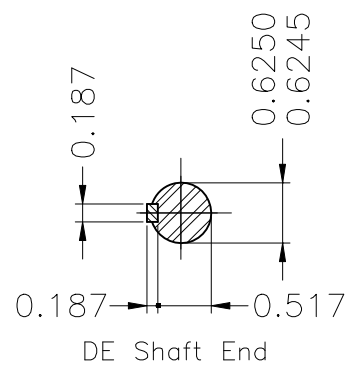


Performance : 115/208-230 V 60 Hz 4P

Rated current : 17.7/9.50-8.87 A
 LRC : 6.5
 Rated torque : 0.839 kgfm
 Locked rotor torque : 290 %
 Breakdown torque : 225 %
 Rated speed : 1730 rpm

Moment of inertia (J) : 0.0068 kgm²
 Duty cycle : Cont.(S1)
 Insulation class : F
 Service factor :
 Temperature rise : 80 K
 Design : L

Rev.	Changes Summary	Performed	Checked	Date
Performed by				Page 2 / 2
Checked by				
Date				
	17/05/2022			Revision



2 HP 04 Poles 60 Hz

A

WMO	
-----	--

Jaragua do Sul

Product Engineering

	SHEET
--	-------

$$\frac{1}{1}$$


WEG's property. Forbidden reproduction without previous authorization.

Dimensions in inches

XME A3