

DATA SHEET

Three Phase Induction Motor - Squirrel Cage



Customer :				
Product line	: Standard Efficiency Three-Phase Product code : 13502196			
Frame	: 56H	Cooling method	: IC01 - ODP	
Insulation class	: F	Mounting	: F-1	
Duty cycle	: Cont.(S1)	Rotation ¹	: Both (CW and CCW)	
Ambient temperature	: -20°C to +40°C	Starting method	: Direct On Line	
Altitude	: 1000 m.a.s.l.	Approx. weight ²	: 13.2 kg	
Design	: A	Moment of inertia (J)	: 0.0038 kgm ²	
Output [HP]	1.5	1.5	1.5	
Poles	4	4	4	
Frequency [Hz]	60	50	50	
Rated voltage [V]	230/460	190/380	220/415	
Rated current [A]	4.60/2.30	5.18/2.59	4.89/2.59	
L. R. Amperes [A]	31.7/15.9	28.5/14.2	29.3/15.5	
LRC [A]	6.9x(Code K)	5.5x(Code G)	6.0x(Code J)	
No load current [A]	3.20/1.60	3.00/1.50	3.96/2.10	
Rated speed [RPM]	1745	1420	1435	
Slip [%]	3.06	5.33	4.33	
Rated torque [kgfm]	0.624	0.767	0.759	
Locked rotor torque [%]	250	170	210	
Breakdown torque [%]	280	210	250	
Service factor		1.00	1.00	
Temperature rise	80 K	105 K	105 K	
Locked rotor time	18s (cold) 10s (hot)	0s (cold) 0s (hot)	0s (cold) 0s (hot)	
Noise level ²	52.0 dB(A)	49.0 dB(A)	49.0 dB(A)	
Efficiency (%)	25%			
	50%	75.5	77.0	
	75%	78.5	78.5	
	100%	80.0	76.7	
Power Factor	25%			
	50%	0.51	0.62	
	75%	0.65	0.76	
	100%	0.75	0.84	
Bearing type	: <u>Drive end</u> 6204 ZZ <u>Non drive end</u> 6202 ZZ	Foundation loads		
Sealing	: Without Without	Max. traction	: 54 kgf	
	Bearing Seal Bearing Seal	Max. compression	: 67 kgf	
Lubrication interval	: - -			
Lubricant amount	: - -			
Lubricant type	: Mobil Polyrex EM			
Notes USABLE @208V 5.09A SF 1.00 SFA 5.09A				
This revision replaces and cancel the previous one, which must be eliminated. (1) Looking the motor from the shaft end. (2) Measured at 1m and with tolerance of +3dB(A). (3) Approximate weight subject to changes after manufacturing process. (4) At 100% of full load.		These are average values based on tests with sinusoidal power supply, subject to the tolerances stipulated in NEMA MG-1.		
Rev.	Changes Summary	Performed	Checked	Date
Performed by				
Checked by			Page	Revision
Date	17/05/2022		1 / 4	

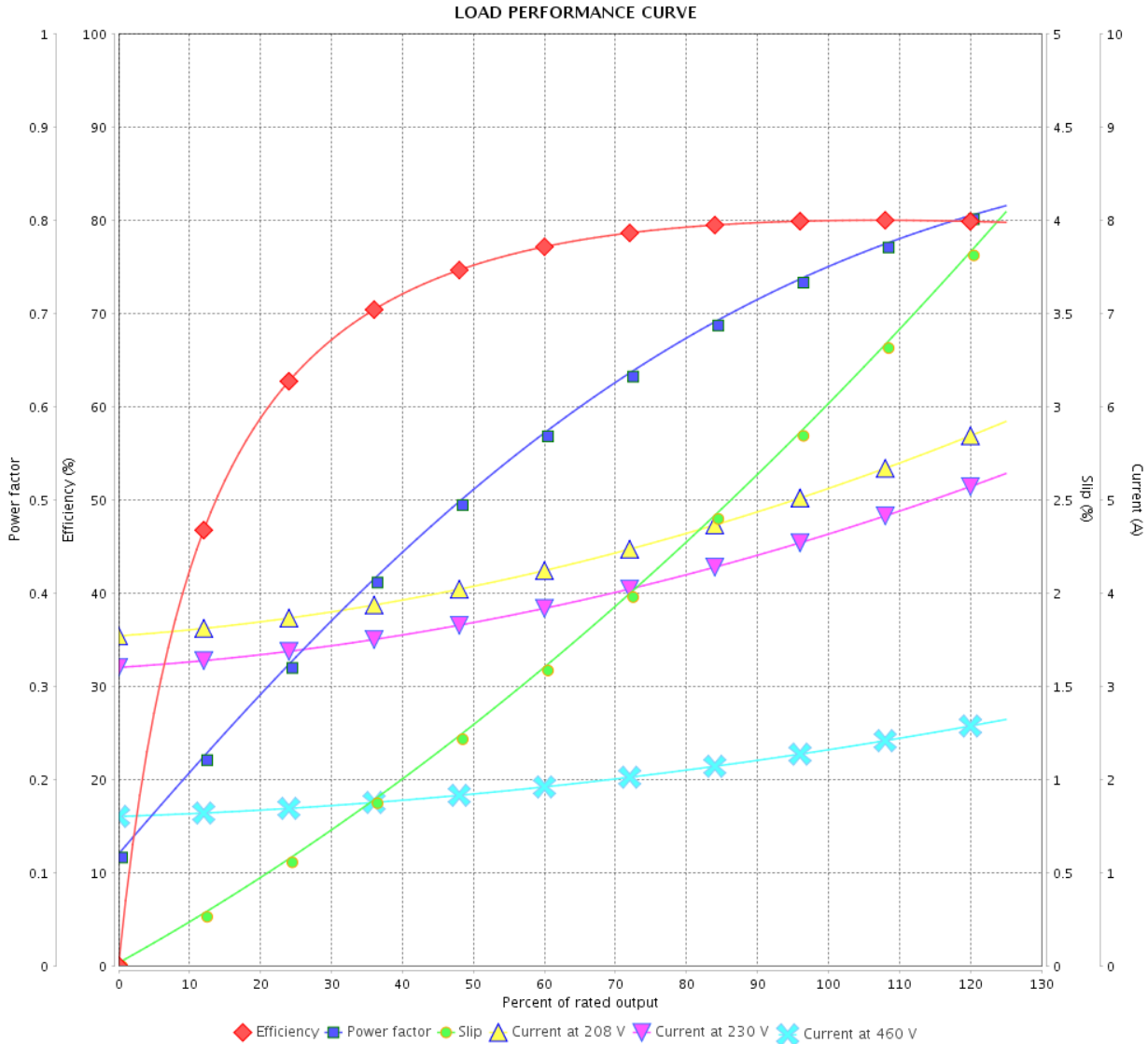
LOAD PERFORMANCE CURVE

Three Phase Induction Motor - Squirrel Cage



Customer :

Product line : Standard Efficiency Three-Phase Product code : 13502196



Performance : 230/460 V 60 Hz 4P

Rated current : 4.60/2.30 A
 LRC : 6.9
 Rated torque : 0.624 kgfm
 Locked rotor torque : 250 %
 Breakdown torque : 280 %
 Rated speed : 1745 rpm

Moment of inertia (J) : 0.0038 kgm²
 Duty cycle : Cont.(S1)
 Insulation class : F
 Service factor :
 Temperature rise : 80 K
 Design : A

Rev.	Changes Summary	Performed	Checked	Date
Performed by			Page	Revision
Checked by				
Date				

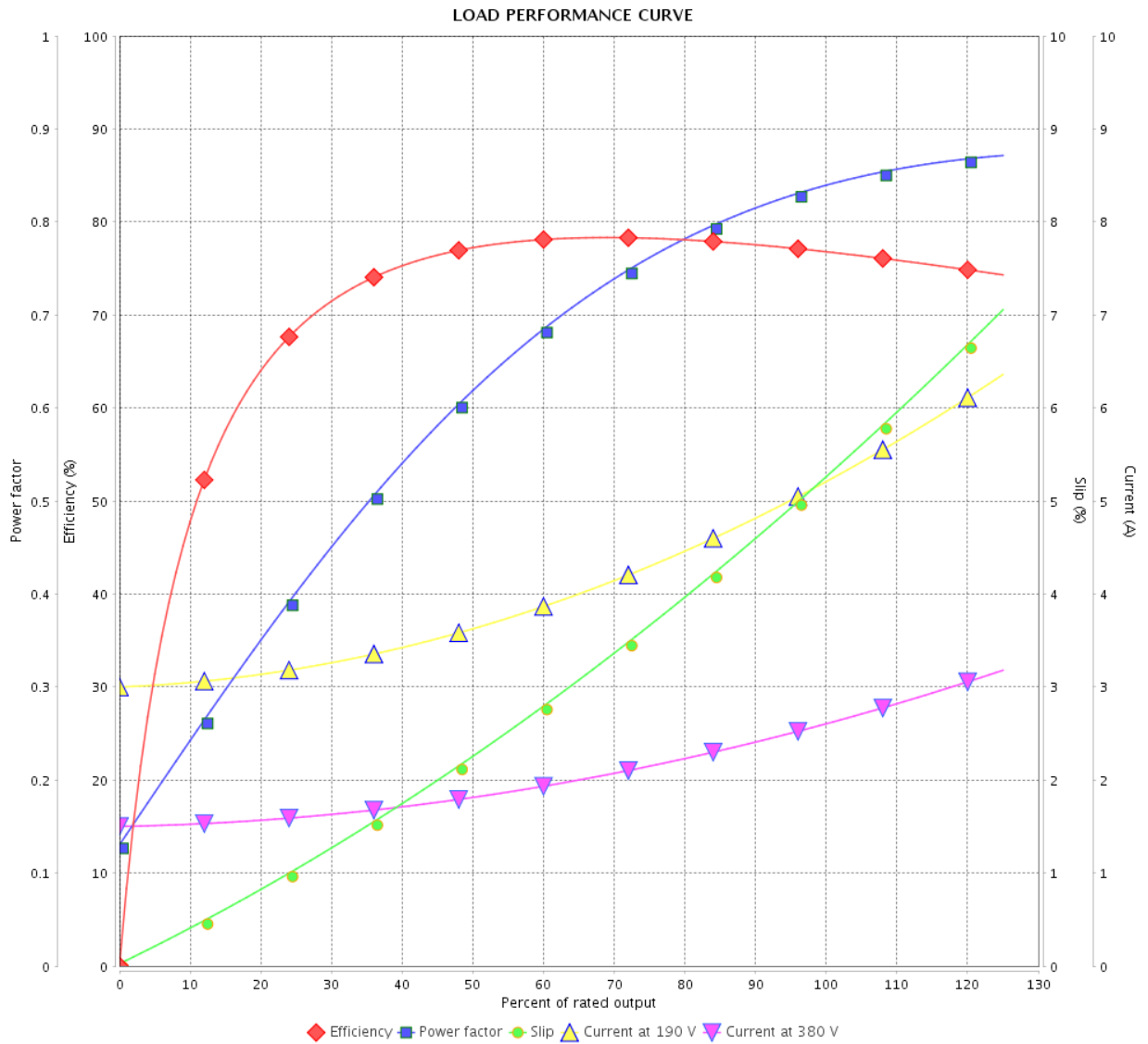
LOAD PERFORMANCE CURVE

Three Phase Induction Motor - Squirrel Cage



Customer : _____

Product line : Standard Efficiency Three-Phase Product code : 13502196



Performance : 190/380 V 50 Hz 4P

Rated current : 5.18/2.59 A
 LRC : 5.5
 Rated torque : 0.767 kgfm
 Locked rotor torque : 170 %
 Breakdown torque : 210 %
 Rated speed : 1420 rpm

Moment of inertia (J) : 0.0038 kgm²
 Duty cycle : Cont.(S1)
 Insulation class : F
 Service factor : 1.00
 Temperature rise : 105 K
 Design : A

Rev.	Changes Summary	Performed	Checked	Date
Performed by			Page 3 / 4	Revision
Checked by				
Date	17/05/2022			

LOAD PERFORMANCE CURVE

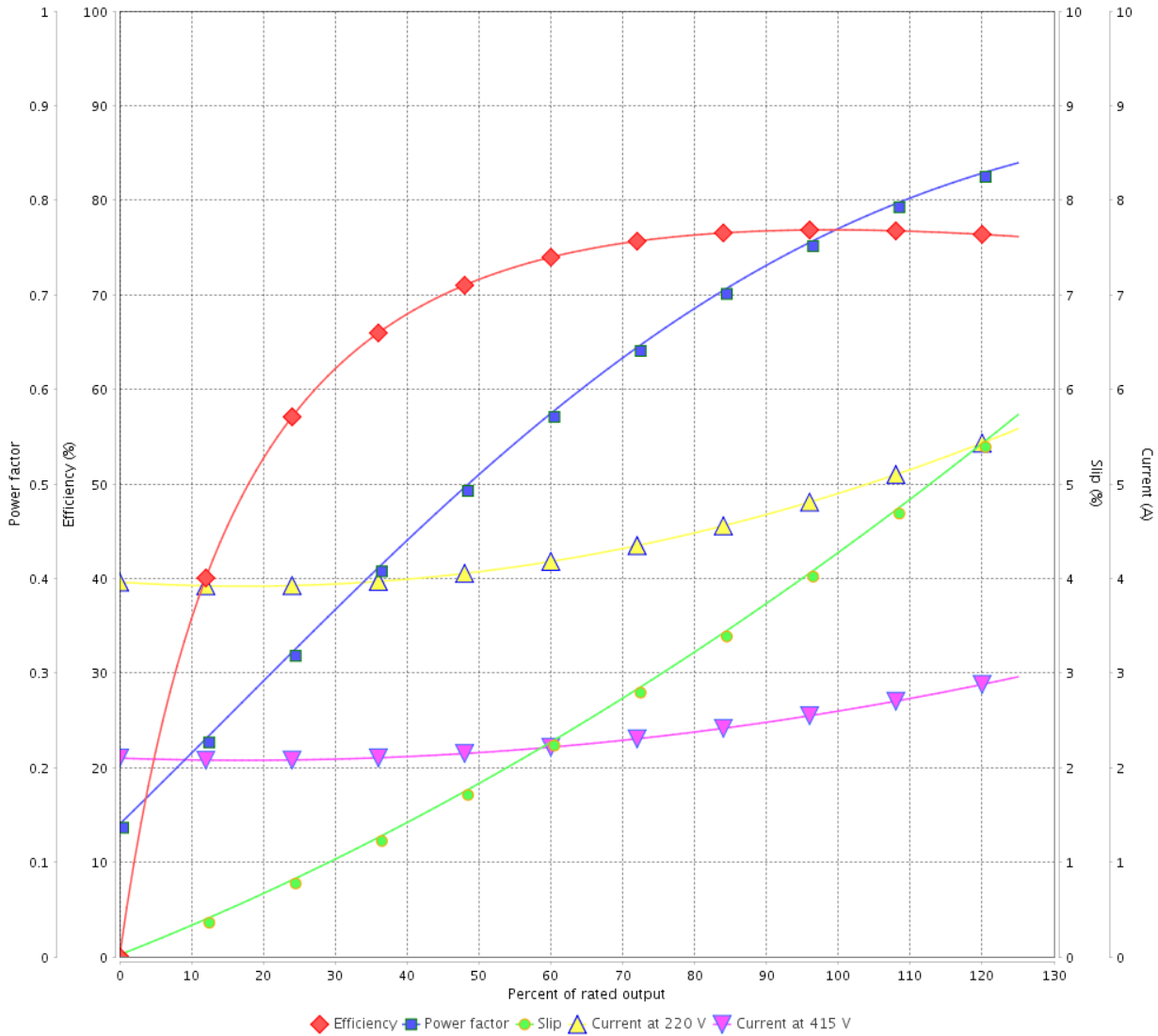
Three Phase Induction Motor - Squirrel Cage



Customer :

Product line : Standard Efficiency Three-Phase Product code : 13502196

LOAD PERFORMANCE CURVE



Performance : 220/415 V 50 Hz 4P

Rated current : 4.89/2.59 A
 LRC : 6.0
 Rated torque : 0.759 kgfm
 Locked rotor torque : 210 %
 Breakdown torque : 250 %
 Rated speed : 1435 rpm

Moment of inertia (J) : 0.0038 kgm²
 Duty cycle : Cont.(S1)
 Insulation class : F
 Service factor : 1.00
 Temperature rise : 105 K
 Design : A

Rev.	Changes Summary	Performed	Checked	Date
Performed by			Page 4 / 4	Revision
Checked by				
Date	17/05/2022			

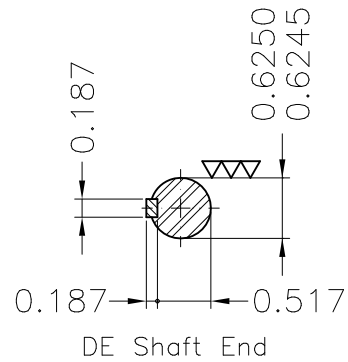
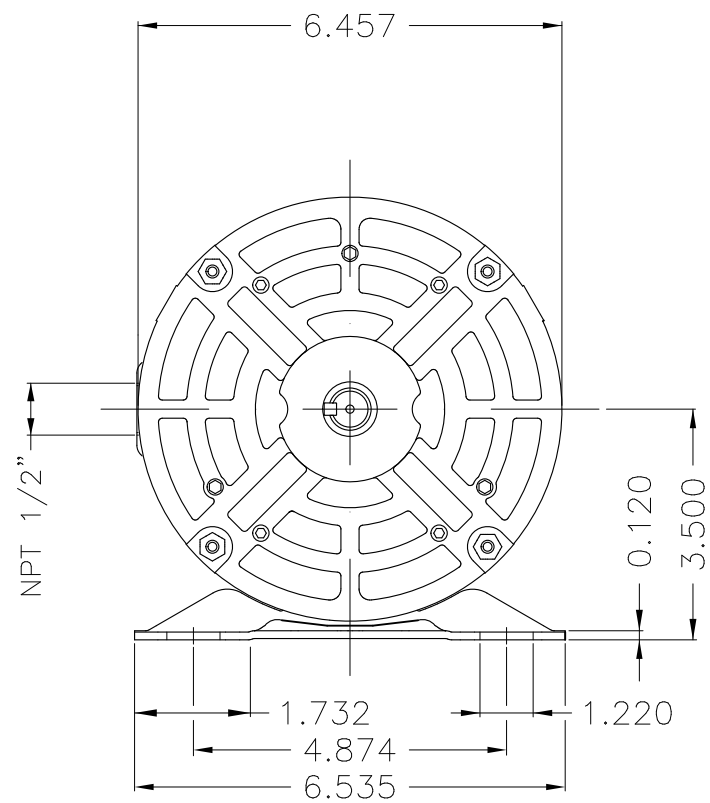
A

B

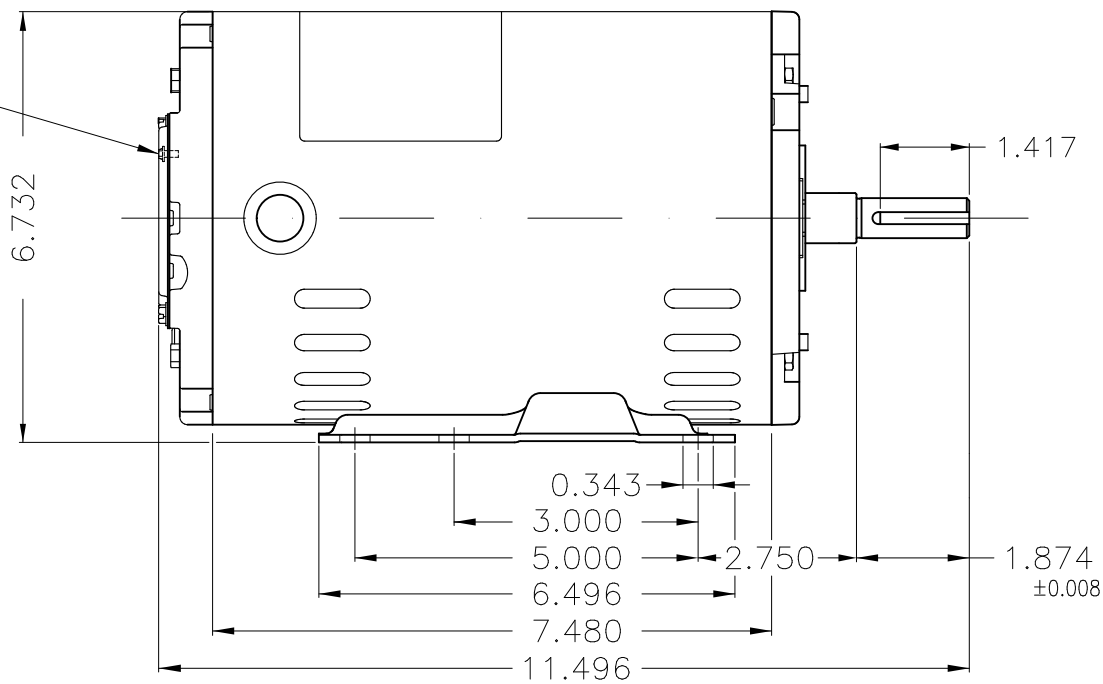
C

D

E



Grounding



Color Munsell N 1 matte black									
Painting plan 207N									
Mounting F-1/B3R(D)									
						00			
ECM	LOC	SUMMARY OF MODIFICATIONS			EXECUTED	CHECKED	RELEASED	DATE	VER
EXECUTED	HYBRISUSER	THREE PH. MOTOR ROLLED STEEL			EXECUTED				<p>PREVIEW</p> <p>WDD 00</p>
CHECKED		FRAME 56H IP21 ODP							
RELEASED									
REL. DATE		WMO	Jaragua do Sul	Product Engineering	SHEET		1 / 1		

1.5 HP 04 Poles 60 Hz

A

