

# DATA SHEET

## Three Phase Induction Motor - Squirrel Cage



Customer	:				
Product line	: Three-Phase	Product code :	13737453		
Frame	: 56	Cooling method	: IC01 - ODP		
Insulation class	: F	Mounting	: F-1		
Duty cycle	: Cont.(S1)	Rotation <sup>1</sup>	: Both (CW and CCW)		
Ambient temperature	: -20°C to +40°C	Starting method	: Direct On Line		
Altitude	: 1000 m.a.s.l.	Approx. weight <sup>3</sup>	: 12.2 kg		
Design	: A	Moment of inertia (J)	: 0.0036 kgm <sup>2</sup>		
Output [HP]	1				
Poles	4				
Frequency [Hz]	60				
Rated voltage [V]	575				
Rated current [A]	1.26				
L. R. Amperes [A]	9.55				
LRC [A]	7.6x(Code L)				
No load current [A]	0.880				
Rated speed [RPM]	1760				
Slip [%]	2.22				
Rated torque [kgfm]	0.412				
Locked rotor torque [%]	280				
Breakdown torque [%]	320				
Service factor	1.15				
Temperature rise	80 K				
Locked rotor time	30s (cold) 17s (hot)				
Noise level <sup>2</sup>	52.0 dB(A)				
Efficiency (%)	25%				
	50%	78.5			
	75%	82.5			
	100%	83.5			
Power Factor	25%				
	50%	0.49			
	75%	0.63			
	100%	0.72			
Bearing type	: Drive end	6204 ZZ	Non drive end	6202 ZZ	
Sealing	: Without		Without		
		Bearing Seal	Bearing Seal		
Lubrication interval	: -		-		
Lubricant amount	: -		-		
Lubricant type	: Mobil Polyrex EM				
Foundation loads					
Max. traction				: 36 kgf	
Max. compression				: 48 kgf	
Notes					
This revision replaces and cancel the previous one, which must be eliminated. (1) Looking the motor from the shaft end. (2) Measured at 1m and with tolerance of +3dB(A). (3) Approximate weight subject to changes after manufacturing process. (4) At 100% of full load.			These are average values based on tests with sinusoidal power supply, subject to the tolerances stipulated in NEMA MG-1.		
Rev.	Changes Summary		Performed	Checked	Date
Performed by					
Checked by				Page	Revision
Date	17/05/2022			1 / 2	

# LOAD PERFORMANCE CURVE

Three Phase Induction Motor - Squirrel Cage

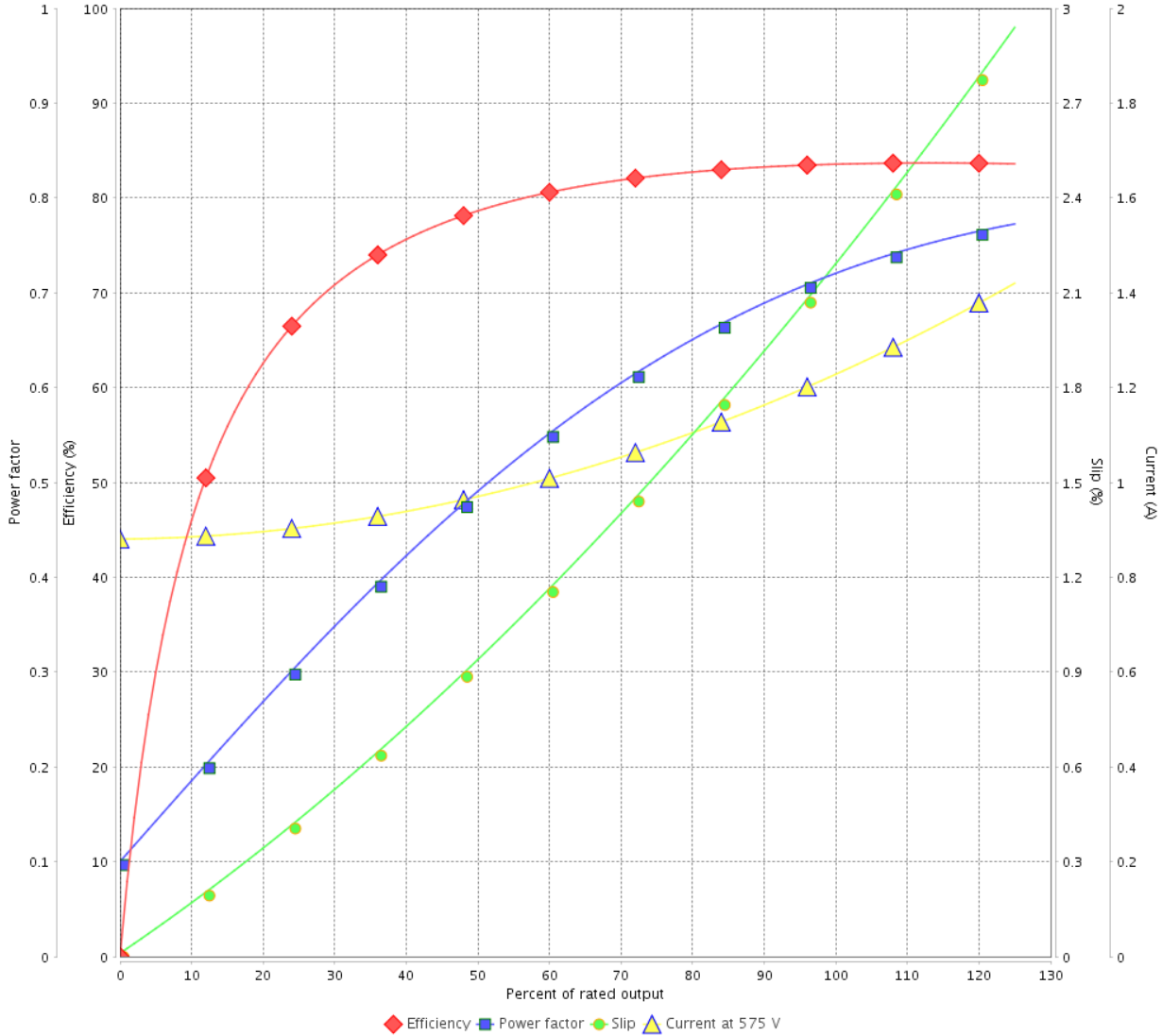


Customer :

Product line : Three-Phase

Product code : 13737453

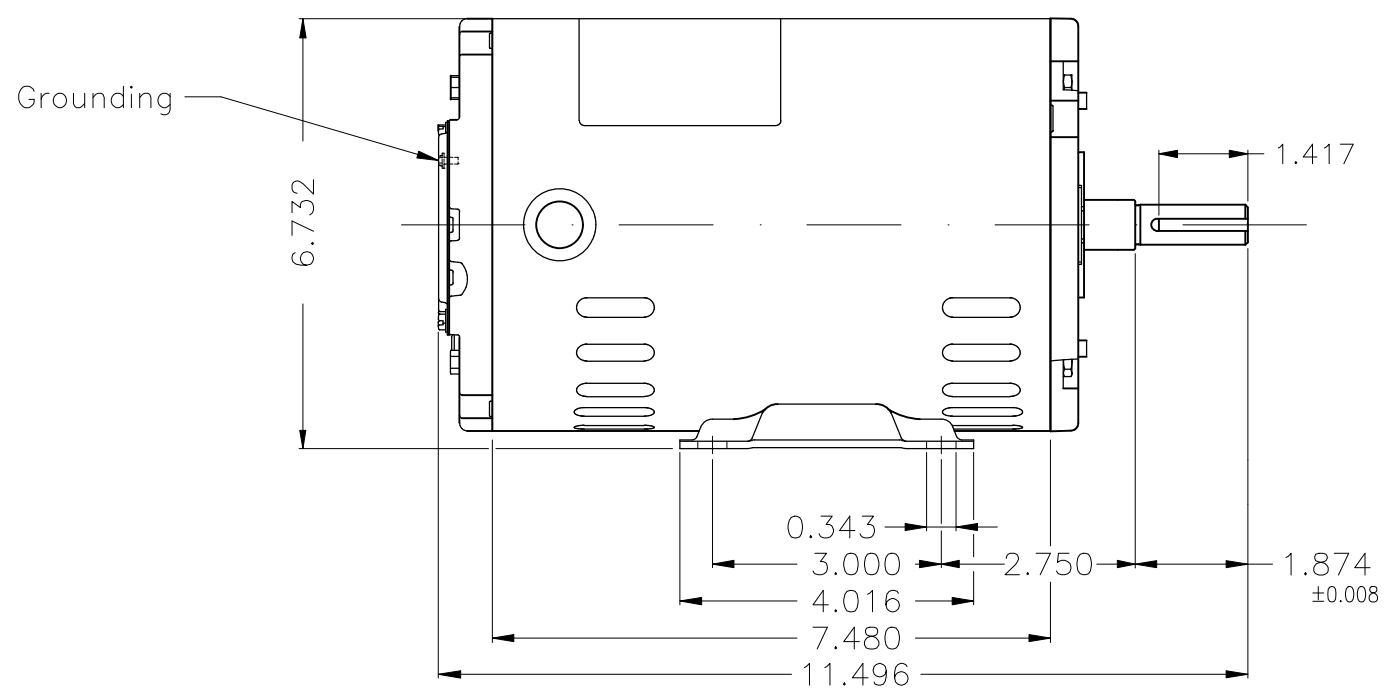
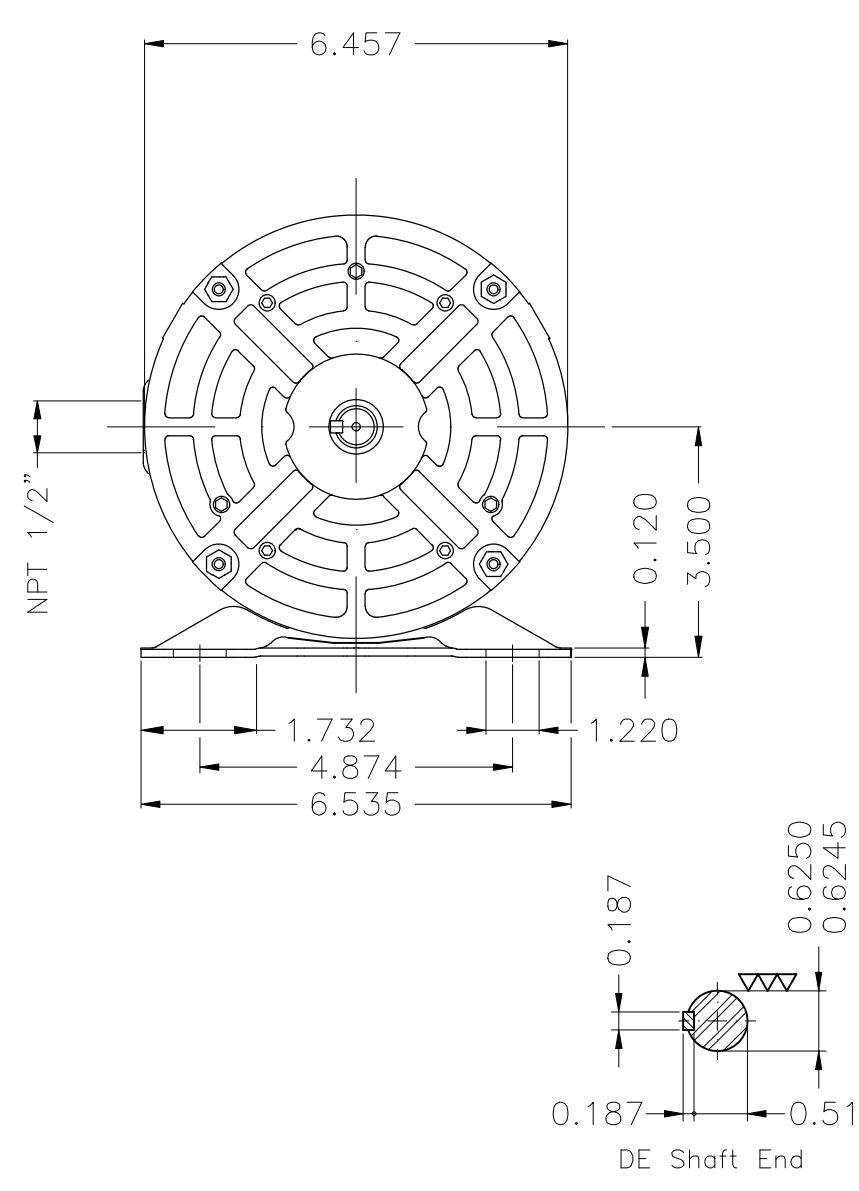
LOAD PERFORMANCE CURVE



Performance : 575 V 60 Hz 4P

Rated current	: 1.26 A	Moment of inertia (J)	: 0.0036 kgm <sup>2</sup>
LRC	: 7.6	Duty cycle	: Cont.(S1)
Rated torque	: 0.412 kgfm	Insulation class	: F
Locked rotor torque	: 280 %	Service factor	: 1.15
Breakdown torque	: 320 %	Temperature rise	: 80 K
Rated speed	: 1760 rpm	Design	: A

Rev.	Changes Summary	Performed	Checked	Date
Performed by			Page 2 / 2	Revision
Checked by				
Date	17/05/2022			



Color Munsell N 1 matte black									
Painting plan 207N									
Mounting F-1/B3R(D)									
						00			
ECM	LOC	SUMMARY OF MODIFICATIONS			EXECUTED	CHECKED	RELEASED	DATE	VER
EXECUTED	HYBRISUSER	THREE PH. MOTOR ROLLED STEEL PREM. EFF.			PREVIEW				
CHECKED		FRAME 56 IP21 ODP			WDD		00		
RELEASED					SHEET		1 / 1		
REL. DATE	WMO	Jaragua do Sul	Product Engineering						

1 HP 04 Poles 60 Hz

A

