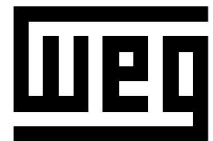


DATA SHEET



Three Phase Induction Motor - Squirrel Cage

Customer : V.J. PAMENSKY CANADA INC.

Product line : Special Motor

Frame	: 56HZ	Locked rotor time	: 17 s (hot) 0 s (cold)
Output	: 1 HP (0.75 kW)	Temperature rise ⁴	: 80 K
Poles	: 4	Duty cycle	: S1
Frequency	: 60 Hz	Ambient temperature	: -20 °C to +40 °C
Rated voltage	: 230/460 V	Altitude	: 1000 m.a.s.l
Rated current	: 3.14/1.57 A	Protection degree	: IP21
L. R. Amperes	: 23.9/11.9 A	Cooling method	: IC01 - ODP
LRC	: 7.6 Code L	Mounting	: F-1/B3R(D)
No load current	: 2.20/1.10 A	Rotation ¹	: Both
Rated speed	: 1760 rpm	Noise level ²	: 52 dB(A)
Slip	: 2.22 %	Starting method	: Direct On Line
Rated torque	: 2.98 ft.lb	Approx. weight ³	: 26.2 lb
Locked rotor torque	: 280 %	Design	: A
Pull up torque	: 235 %		
Breakdown torque	: 320 %		
Insulation class	: F		
Service factor	: 1.15		
Moment of inertia (J)	: 0.0854 sq.ft.lb		

Output	Start	50%	75%	100%	Load type	: -
Efficiency (%)	-	78.5	82.5	83.5	Load torque	: -
Power Factor	0.68	0.49	0.63	0.72	Load inertia (J=GD ² /4)	: -

	Drive end	Non drive end
Bearing type	6205-ZZ	6202-ZZ
Lubrication interval	-	-
Lubricant amount	-	-
Lubricant type	MOBIL POLYREX EM	

Notes:
USABLE @208V 3.47 A SF 1.00

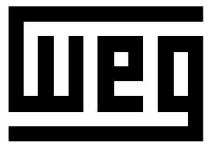
Standards	Specification	: MG1 - Part 10	Vibration	: MG1 - Part 7
	Test	: MG1 - Part 12	Tolerance	: MG1 - Part 12
	Noise	: MG1 - Part 9		

This revision replaces and cancel the previous one, which must be eliminated.
 (1) Looking the motor from the shaft end.
 (2) Measured at 1m and with tolerance of +3dB(A).
 (3) Approximate weight, subject to be changed after manufacturing process.
 (4) At 100% of full load.

These are average values based on tests with sinusoidal power supply, subject to the tolerances stipulated in NEMA MG 1-12.

Rev.	Changes Summary		Performed	Checked	Date
					07/02/2017
Performed by	marian			21053/2017	
Checked by	caltamirano			Page	Revision
Date	03/02/2017			1/4	0

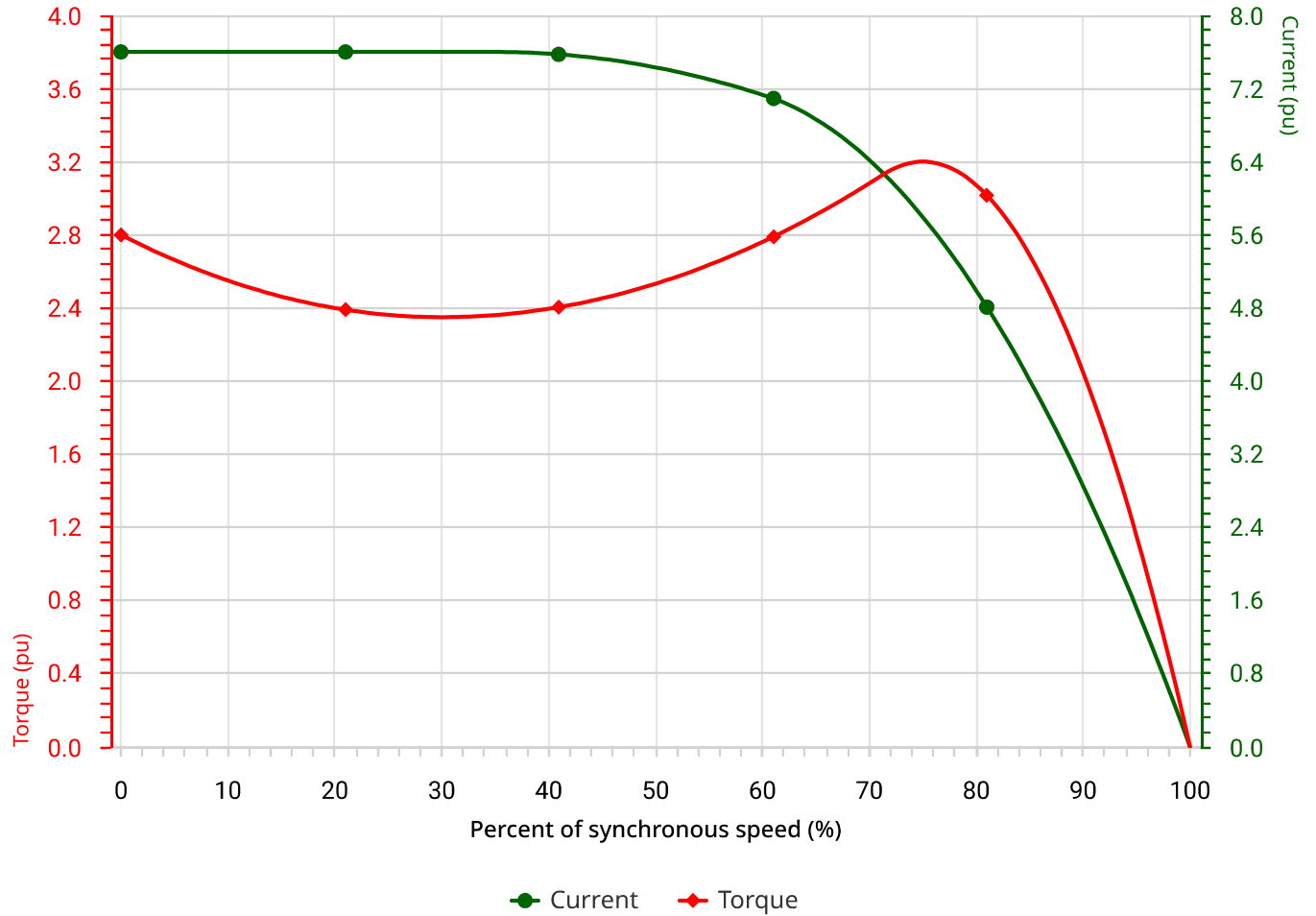
TORQUE AND CURRENT VS SPEED CURVE



Three Phase Induction Motor - Squirrel Cage

Customer : V.J. PAMENSKY CANADA INC.

Product line : Special Motor



Performance : 1 HP (0.75 kW) 208/230/460V 60Hz 4P 56HZ

Rated current	: 3.47/3.14/1.57 A	Moment of inertia (J)	: 0.0854 sq.ft.lb
LRC	: 7.6 Code L	Duty cycle	: Cont.(S1)
Rated torque	: 2.98 ft.lb	Insulation class	: F
Locked rotor torque	: 280 %	Service factor	: 1.15
Breakdown torque	: 320 %	Temperature rise	: 80 K
Rated speed	: 1760 rpm	Design	: A

Locked rotor time 100% : 17 s (hot) 0 s (cold)
Load Inertia (J=GD²/4) : 0.0854 sq.ft.lb

Rev.	Changes Summary	Performed	Checked	Date
				07/02/2017
Performed by	marian			21053/2017
Checked by	caltamirano			Page Revision
Date	03/02/2017			2/4 0

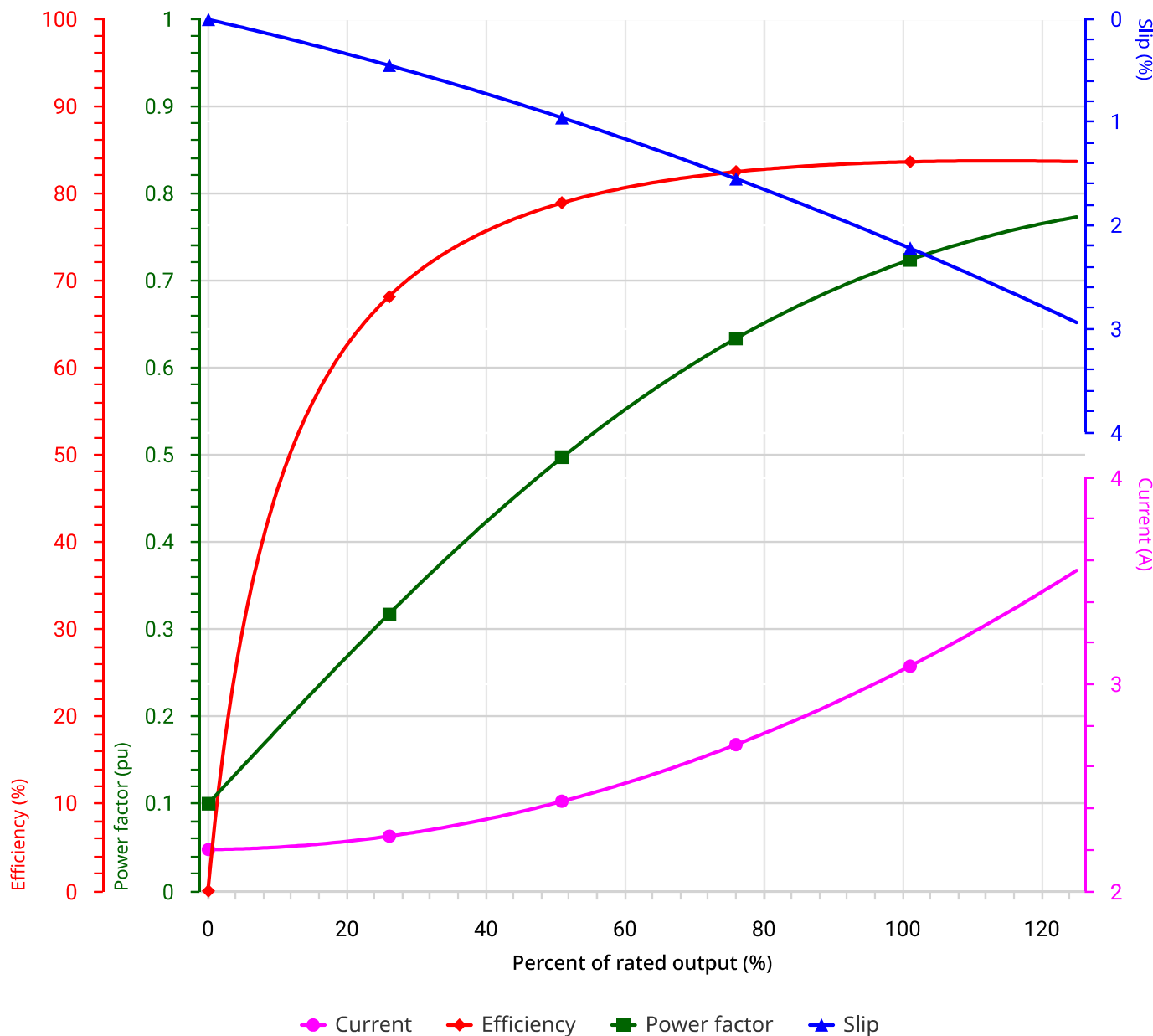
LOAD PERFORMANCE CURVE



Three Phase Induction Motor - Squirrel Cage

Customer : V.J. PAMENSKY CANADA INC.

Product line : Special Motor

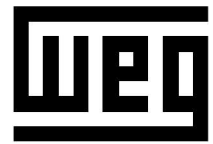


Performance : 1 HP (0.75 kW) 208/230/460V 60Hz 4P 56HZ

Rated current	: 3.47/3.14/1.57 A	Moment of inertia (J)	: 0.0854 sq.ft.lb
LRC	: 7.6 Code L	Duty cycle	: Cont.(S1)
Rated torque	: 2.98 ft.lb	Insulation class	: F
Locked rotor torque	: 280 %	Service factor	: 1.15
Breakdown torque	: 320 %	Temperature rise	: 80 K
Rated speed	: 1760 rpm	Design	: A

Rev.	Changes Summary	Performed	Checked	Date
				07/02/2017
Performed by	marian			21053/2017
Checked by	caltamirano			Page Revision
Date	03/02/2017			3/4 0

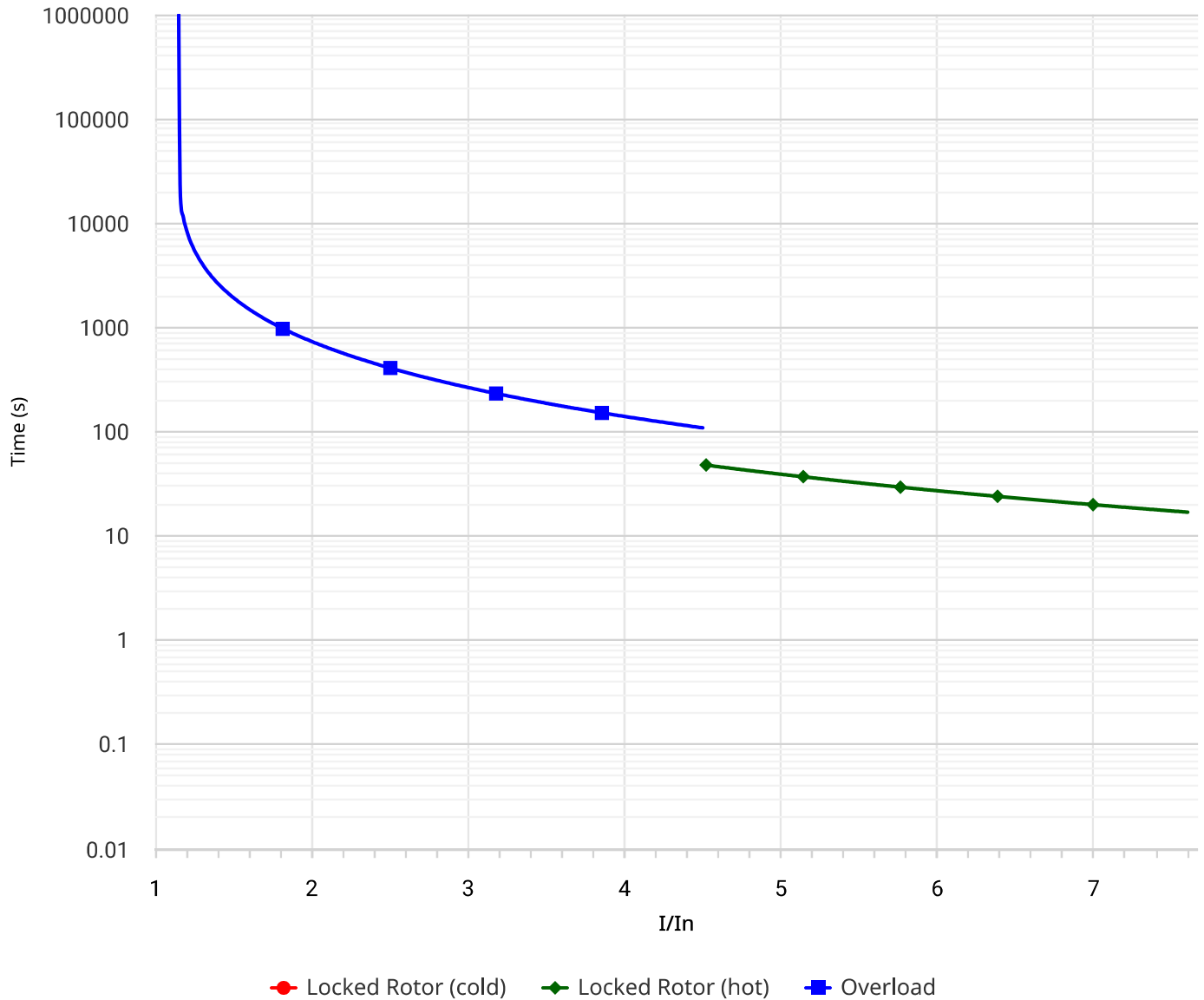
THERMAL LIMIT CURVE



Three Phase Induction Motor - Squirrel Cage

Customer : V.J. PAMENSKY CANADA INC.

Product line : Special Motor



Performance : 1 HP (0.75 kW) 208/230/460V 60Hz 4P 56HZ

Rated current	: 3.47/3.14/1.57 A	Moment of inertia (J)	: 0.0854 sq.ft.lb
LRC	: 7.6 Code L	Duty cycle	: Cont.(S1)
Rated torque	: 2.98 ft.lb	Insulation class	: F
Locked rotor torque	: 280 %	Service factor	: 1.15
Breakdown torque	: 320 %	Temperature rise	: 80 K
Rated speed	: 1760 rpm	Design	: A

Heating constant : 35.7 min
Cooling constant : 107.1 min

Rev.	Changes Summary	Performed	Checked	Date
				07/02/2017
Performed by	marian			21053/2017
Checked by	caltamirano			Page Revision
Date	03/02/2017			4/4 0

No reproduction of this drawing is allowed without written permission of WEG Motores

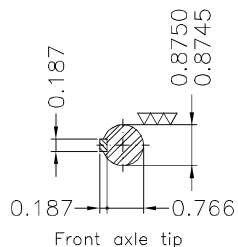
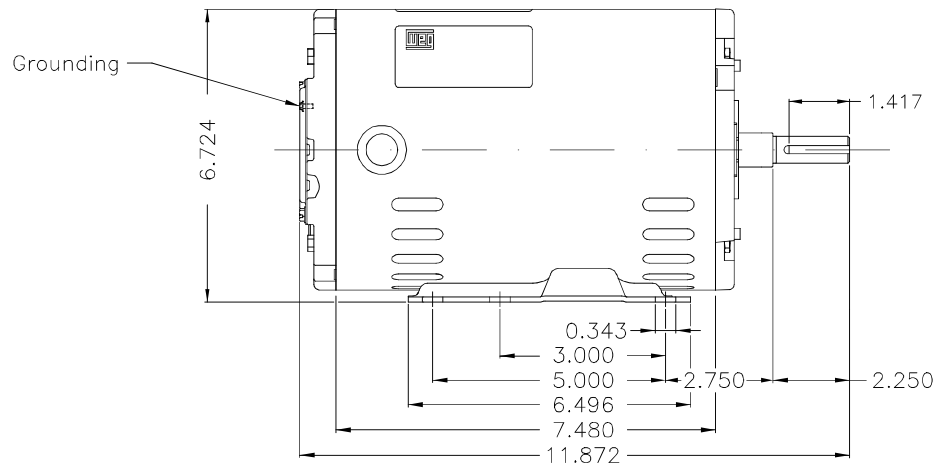
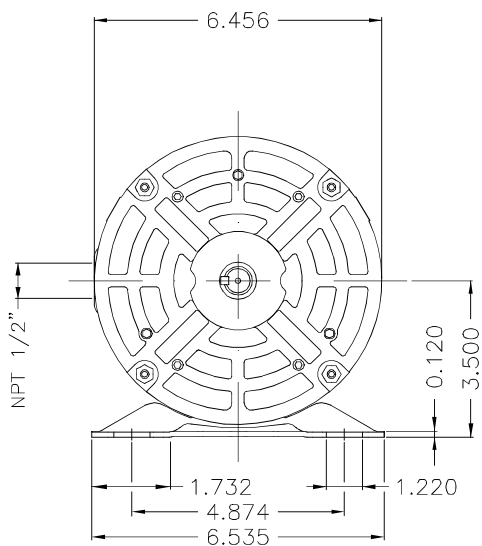
EIXO	
PADRÃO	
OPCIONAL	
ESPECIAL	X

Dimensiones en pulgadas
Dimensions in inches

DOCUMENTO PRELIMINAR

No debe ser utilizado para fines de instalación

THIS IS AN UPDATED REVISION, THE PREVIOUS ONE MUST BE DISREGARDED.



Color Munsell N 1 matte black / Color Munsell N 1 negro mate									
Painting plan 207N / Plan de pintura 207N									
Mounting F-1/B3R(D) / Forma constructiva F-1/B3R(D)									
V.J. PAMENSKY CANADA INC.									
500001270387		ALT. CONFORME AL CLAIM: 414555253			CASTELAN		CESTRELLA	02.02.2017	01
500001268592		NEW DOCUMENT			CMARQUEZ		ALDOV	30.01.2017	00
No MODIFICACION ECM	LOC LOC	RESUMEN DE MODIFICACIONES SUMMARY OF MODIFICATIONS			EJECUTADO EXECUTED	VERIFICADO CHECKED	LIBERADO RELEASED	FECHA DATE	VER VER
EJEC. /EXECUTED	CMARQUEZ				MOTOR TRIF ODP ROLLED STEEL PREM. EFF.			10004731059	
VERIF. /CHECKED					FRAME 56HZ IP21			000 01	
LIBER./RELEASED	ALDOV								
FECHA LIB/REL DT	30.01.2017	WMX	HUEHUETOCA	INGENIERIA DEL PRODUCTO	HOJA/SHEET	01 / 01			

1 HP	04 Polos	60Hz	208-230/460 V	414547524	B
1 HP	04 Polos	60Hz	575 V	414547521	A