

DATA SHEET

Three Phase Induction Motor - Squirrel Cage



Customer	:		
Product line	: Standard Efficiency Three-Phase	Product code :	13286642
Frame	: 56	Cooling method	: IC01 - ODP
Insulation class	: F	Mounting	: F-1
Duty cycle	: Cont.(S1)	Rotation ¹	: Both (CW and CCW)
Ambient temperature	: -20°C to +40°C	Starting method	: Direct On Line
Altitude	: 1000 m.a.s.l.	Approx. weight ³	: 10.1 kg
Design	: A	Moment of inertia (J)	: 0.0030 kgm ²
Output [HP]	1	1	1
Poles	4	4	4
Frequency [Hz]	60	50	50
Rated voltage [V]	230/460	190/380	220/415
Rated current [A]	3.60/1.80	3.84/1.92	3.90/2.07
L. R. Amperes [A]	23.8/11.9	19.6/9.79	20.7/11.0
LRC [A]	6.6x(Code L)	5.1x(Code H)	5.3x(Code J)
No load current [A]	2.80/1.40	2.80/1.40	3.77/2.00
Rated speed [RPM]	1750	1425	1440
Slip [%]	2.78	5.00	4.00
Rated torque [kgfm]	0.415	0.509	0.504
Locked rotor torque [%]	250	160	200
Breakdown torque [%]	290	210	250
Service factor		1.00	1.00
Temperature rise	80 K	105 K	105 K
Locked rotor time	18s (cold) 10s (hot)	0s (cold) 0s (hot)	0s (cold) 0s (hot)
Noise level ²	52.0 dB(A)	49.0 dB(A)	49.0 dB(A)
Efficiency (%)	25%		
	50%	68.0	70.6
	75%	74.0	74.4
	100%	77.0	74.2
Power Factor	25%		
	50%	0.44	0.56
	75%	0.58	0.70
	100%	0.68	0.80
Bearing type	: <u>Drive end</u> 6204 ZZ <u>Non drive end</u> 6202 ZZ	Foundation loads	
Sealing	: Without Bearing Seal Without Bearing Seal	Max. traction	: 35 kgf
Lubrication interval	: -	Max. compression	: 45 kgf
Lubricant amount	: -		
Lubricant type	: Mobil Polyrex EM		
Notes USABLE @208V 3.98A SF 1.00 SFA 3.98A			
This revision replaces and cancel the previous one, which must be eliminated. (1) Looking the motor from the shaft end. (2) Measured at 1m and with tolerance of +3dB(A). (3) Approximate weight subject to changes after manufacturing process. (4) At 100% of full load.		These are average values based on tests with sinusoidal power supply, subject to the tolerances stipulated in NEMA MG-1.	
Rev.	Changes Summary	Performed	Checked
			Date
Performed by			
Checked by			Page
Date	17/05/2022		Revision
			1 / 4

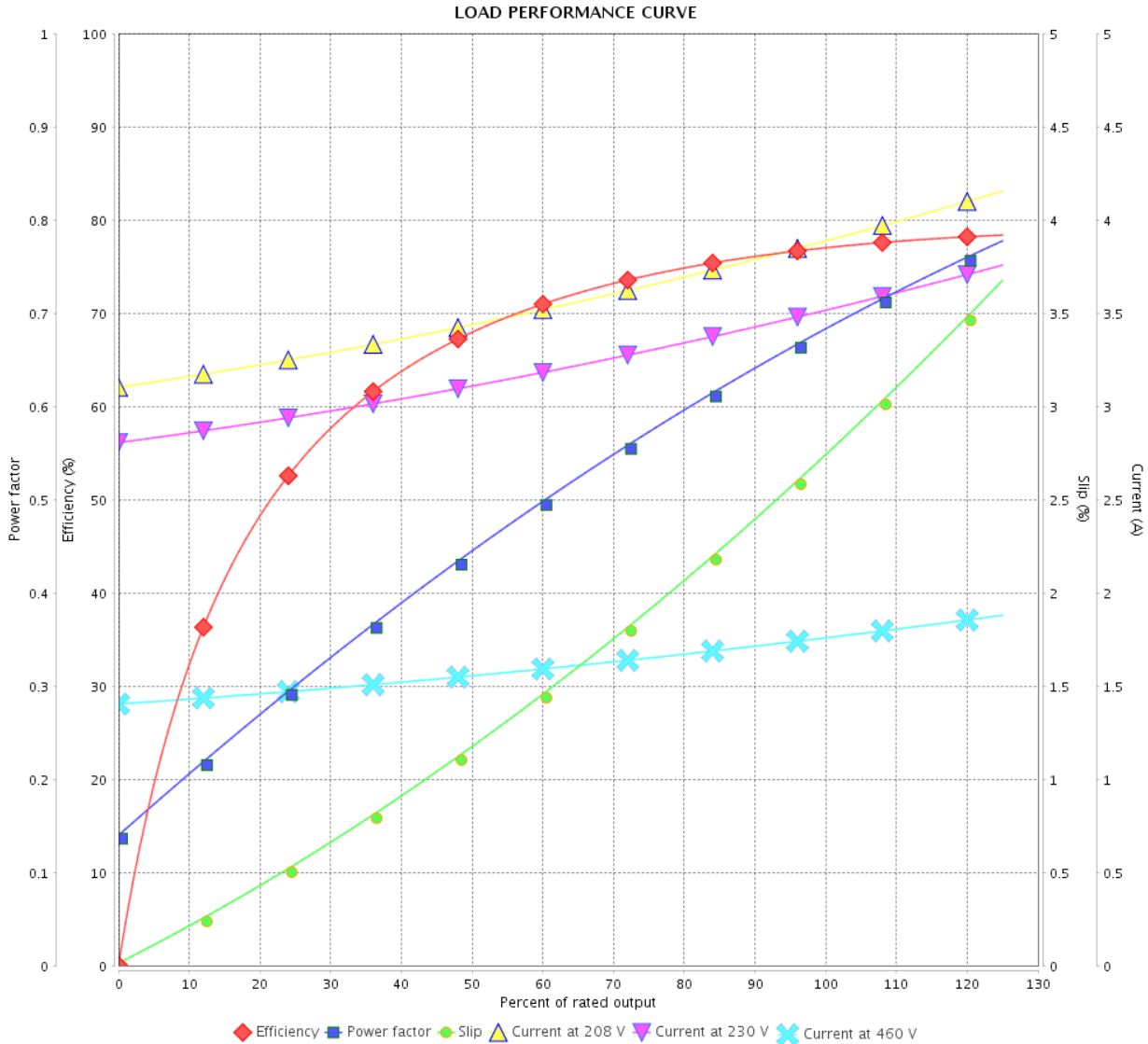
LOAD PERFORMANCE CURVE

Three Phase Induction Motor - Squirrel Cage



Customer :

Product line : Standard Efficiency Three-Phase Product code : 13286642



Performance : 230/460 V 60 Hz 4P

Rated current : 3.60/1.80 A
 LRC : 6.6
 Rated torque : 0.415 kgfm
 Locked rotor torque : 250 %
 Breakdown torque : 290 %
 Rated speed : 1750 rpm

Moment of inertia (J) : 0.0030 kgm²
 Duty cycle : Cont.(S1)
 Insulation class : F
 Service factor :
 Temperature rise : 80 K
 Design : A

Rev.	Changes Summary	Performed	Checked	Date
Performed by			Page 2 / 4	Revision
Checked by				
Date	17/05/2022			

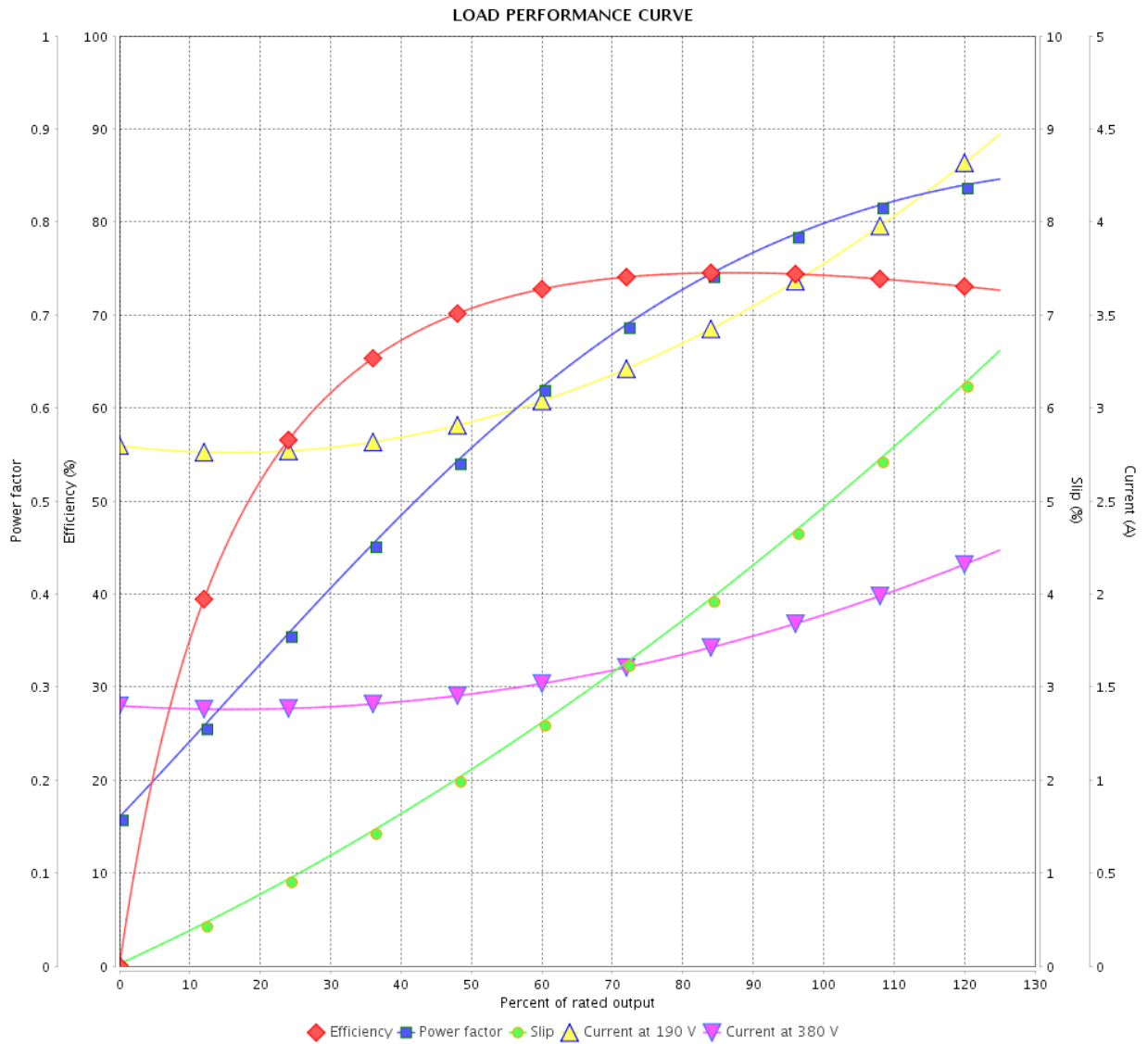
LOAD PERFORMANCE CURVE

Three Phase Induction Motor - Squirrel Cage



Customer : _____

Product line : Standard Efficiency Three-Phase Product code : 13286642



Performance : 190/380 V 50 Hz 4P

Rated current : 3.84/1.92 A
 LRC : 5.1
 Rated torque : 0.509 kgfm
 Locked rotor torque : 160 %
 Breakdown torque : 210 %
 Rated speed : 1425 rpm

Moment of inertia (J) : 0.0030 kgm²
 Duty cycle : Cont.(S1)
 Insulation class : F
 Service factor : 1.00
 Temperature rise : 105 K
 Design : A

Rev.	Changes Summary	Performed	Checked	Date
Performed by			Page	Revision
Checked by				
Date				
			3 / 4	

LOAD PERFORMANCE CURVE

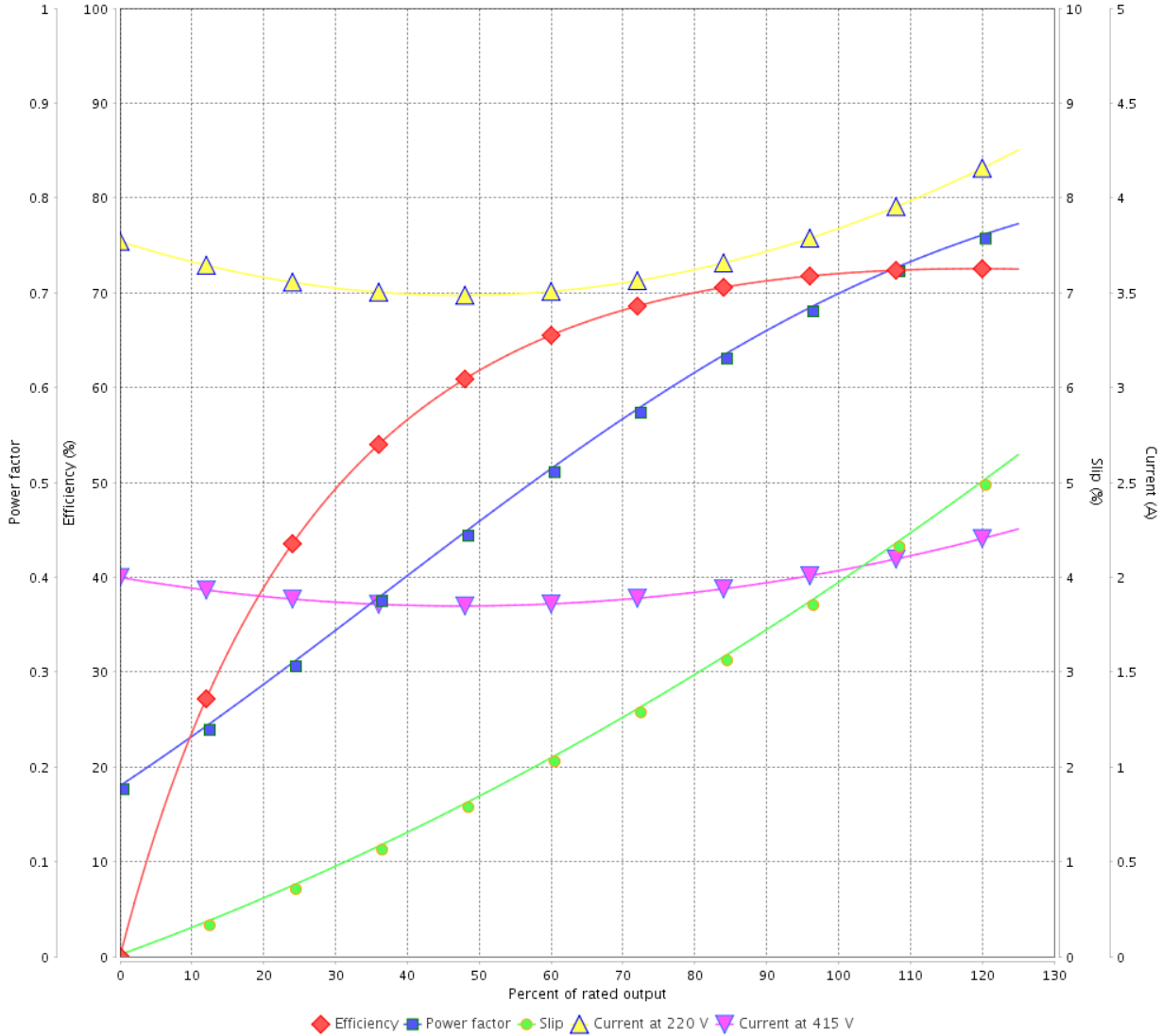
Three Phase Induction Motor - Squirrel Cage



Customer :

Product line : Standard Efficiency Three-Phase Product code : 13286642

LOAD PERFORMANCE CURVE



Performance : 220/415 V 50 Hz 4P

Rated current : 3.90/2.07 A
 LRC : 5.3
 Rated torque : 0.504 kgfm
 Locked rotor torque : 200 %
 Breakdown torque : 250 %
 Rated speed : 1440 rpm

Moment of inertia (J) : 0.0030 kgm²
 Duty cycle : Cont.(S1)
 Insulation class : F
 Service factor : 1.00
 Temperature rise : 105 K
 Design : A

Rev.	Changes Summary	Performed	Checked	Date
Performed by			Page 4 / 4	Revision
Checked by				
Date	17/05/2022			

1 2 3 4 5 6

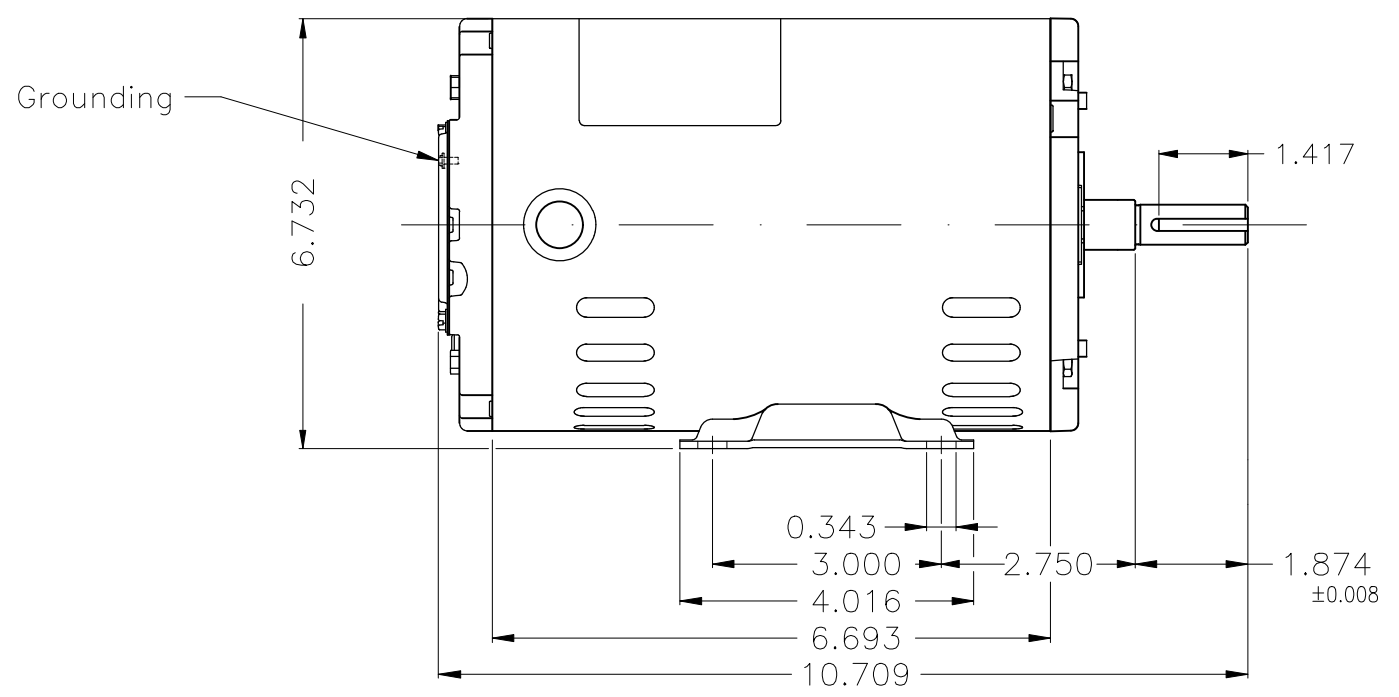
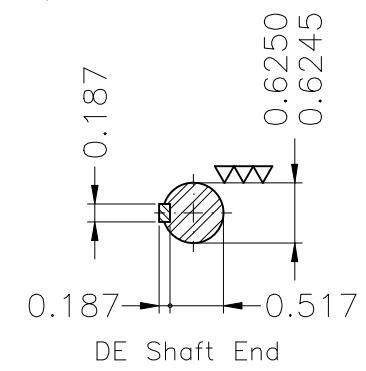
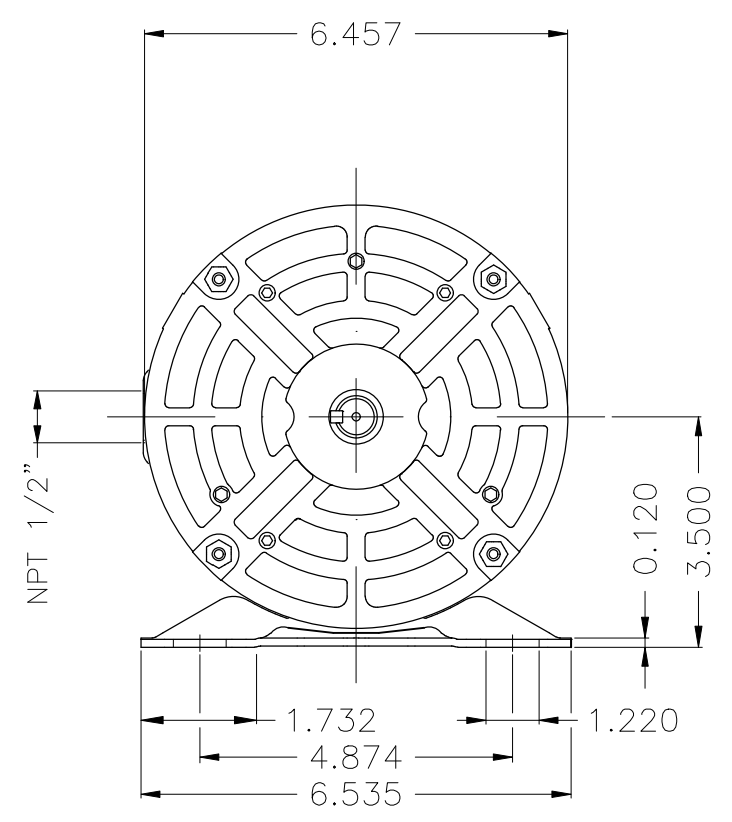
A

B

C

D

E



Color Munsell N 1 matte black									
Painting plan 207N									
Mounting F-1/B3R(D)									
					HYBRISUSER	00			
ECM	LOC	SUMMARY OF MODIFICATIONS			EXECUTED	CHECKED	RELEASED	DATE	VER
EXECUTED	HYBRISUSER	THREE PH. MOTOR ROLLED STEEL				PREVIEW			
CHECKED		FRAME 56 IP21 ODP				WDD	00		
RELEASED						SHEET	1 / 1		
REL. DATE		WMO	Jaragua do Sul	Product Engineering					

1 HP 04 Poles 60 Hz

A