

DATA SHEET

Three Phase Induction Motor - Squirrel Cage



| | | | | |
|--|---|--|---------------------------|----------|
| Customer : | | | | |
| Product line | | : Standard Efficiency Three-Phase | Product code : | 13377281 |
| Frame | : 56 | Cooling method | : IC01 - ODP | |
| Insulation class | : F | Mounting | : F-1 | |
| Duty cycle | : Cont.(S1) | Rotation ¹ | : Both (CW and CCW) | |
| Ambient temperature | : -20°C to +40°C | Starting method | : Direct On Line | |
| Altitude | : 1000 m.a.s.l. | Approx. weight ³ | : 9.4 kg | |
| | | Moment of inertia (J) | : 0.0025 kgm ² | |
| Output [HP] | 0.75 | | | |
| Poles | 4 | | | |
| Frequency [Hz] | 60 | | | |
| Rated voltage [V] | 575 | | | |
| Rated current [A] | 1.07 | | | |
| L. R. Amperes [A] | 6.75 | | | |
| LRC [A] | 6.3x(Code K) | | | |
| No load current [A] | 0.880 | | | |
| Rated speed [RPM] | 1755 | | | |
| Slip [%] | 2.50 | | | |
| Rated torque [kgfm] | 0.310 | | | |
| Locked rotor torque [%] | 229 | | | |
| Breakdown torque [%] | 300 | | | |
| Service factor | 1.25 | | | |
| Temperature rise | 80 K | | | |
| Locked rotor time | 23s (cold) 13s (hot) | | | |
| Noise level ² | 52.0 dB(A) | | | |
| Efficiency (%) | 25% | | | |
| | 50% | 66.0 | | |
| | 75% | 72.0 | | |
| | 100% | 75.5 | | |
| Power Factor | 25% | | | |
| | 50% | 0.45 | | |
| | 75% | 0.58 | | |
| | 100% | 0.68 | | |
| Bearing type | : Drive end 6203 ZZ Non drive end 6202 ZZ | Foundation loads | | |
| Sealing | : Without Bearing Seal Without Bearing Seal | Max. traction : 25 kgf | | |
| | | Max. compression : 34 kgf | | |
| Lubrication interval | : - | | | |
| Lubricant amount | : - | | | |
| Lubricant type | : Mobil Polyrex EM | | | |
| Notes | | | | |
| | | | | |
| This revision replaces and cancel the previous one, which must be eliminated. (1) Looking the motor from the shaft end. (2) Measured at 1m and with tolerance of +3dB(A). (3) Approximate weight subject to changes after manufacturing process. (4) At 100% of full load. | | These are average values based on tests with sinusoidal power supply, subject to the tolerances stipulated in NEMA MG-1. | | |
| Rev. | Changes Summary | | Performed | Checked |
| | | | | |
| Performed by | | | | |
| Checked by | | | Page | Revision |
| Date | 17/05/2022 | | 1 / 2 | |

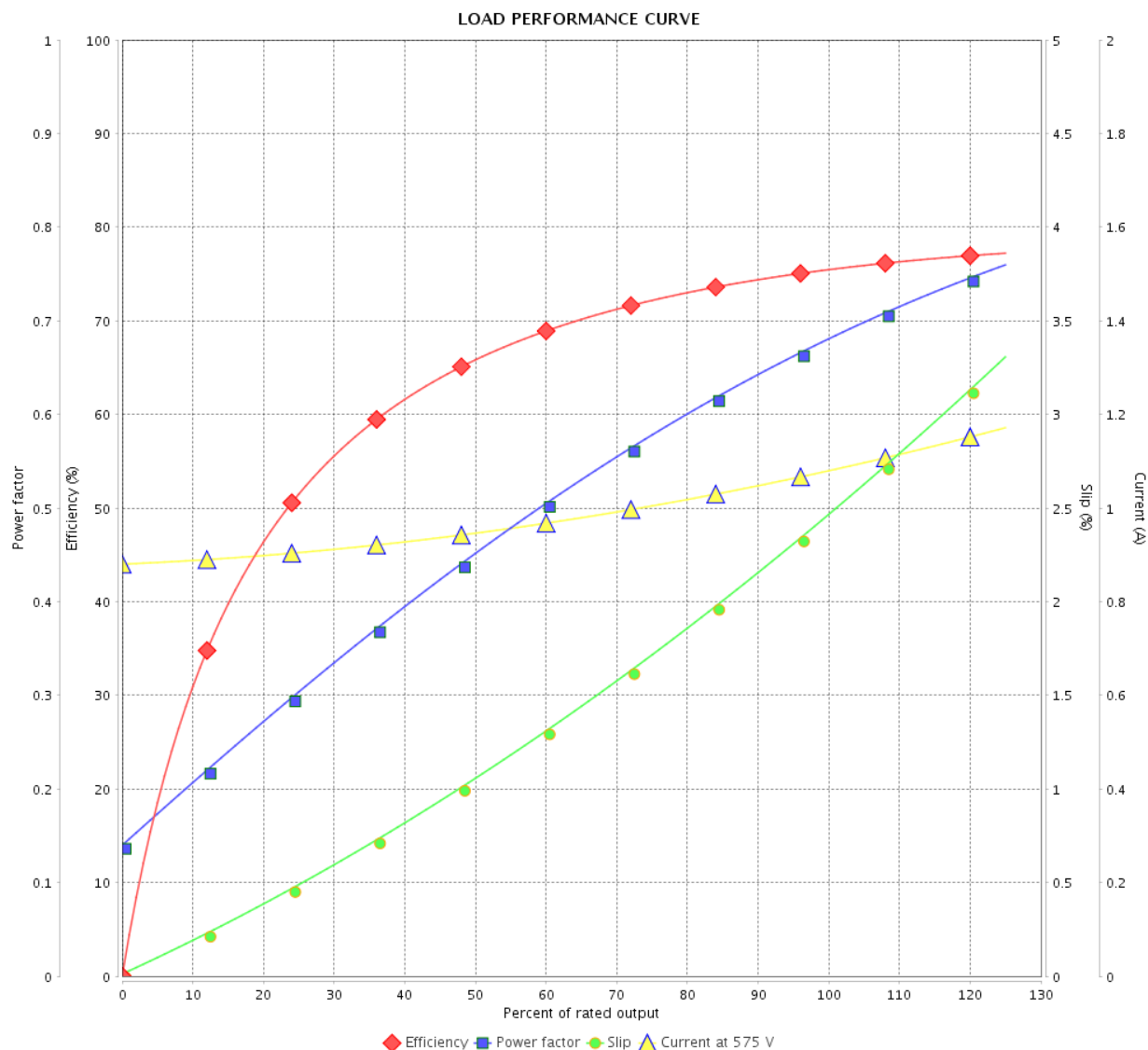
LOAD PERFORMANCE CURVE

Three Phase Induction Motor - Squirrel Cage



Customer :

Product line : Standard Efficiency Three-Phase Product code : 13377281

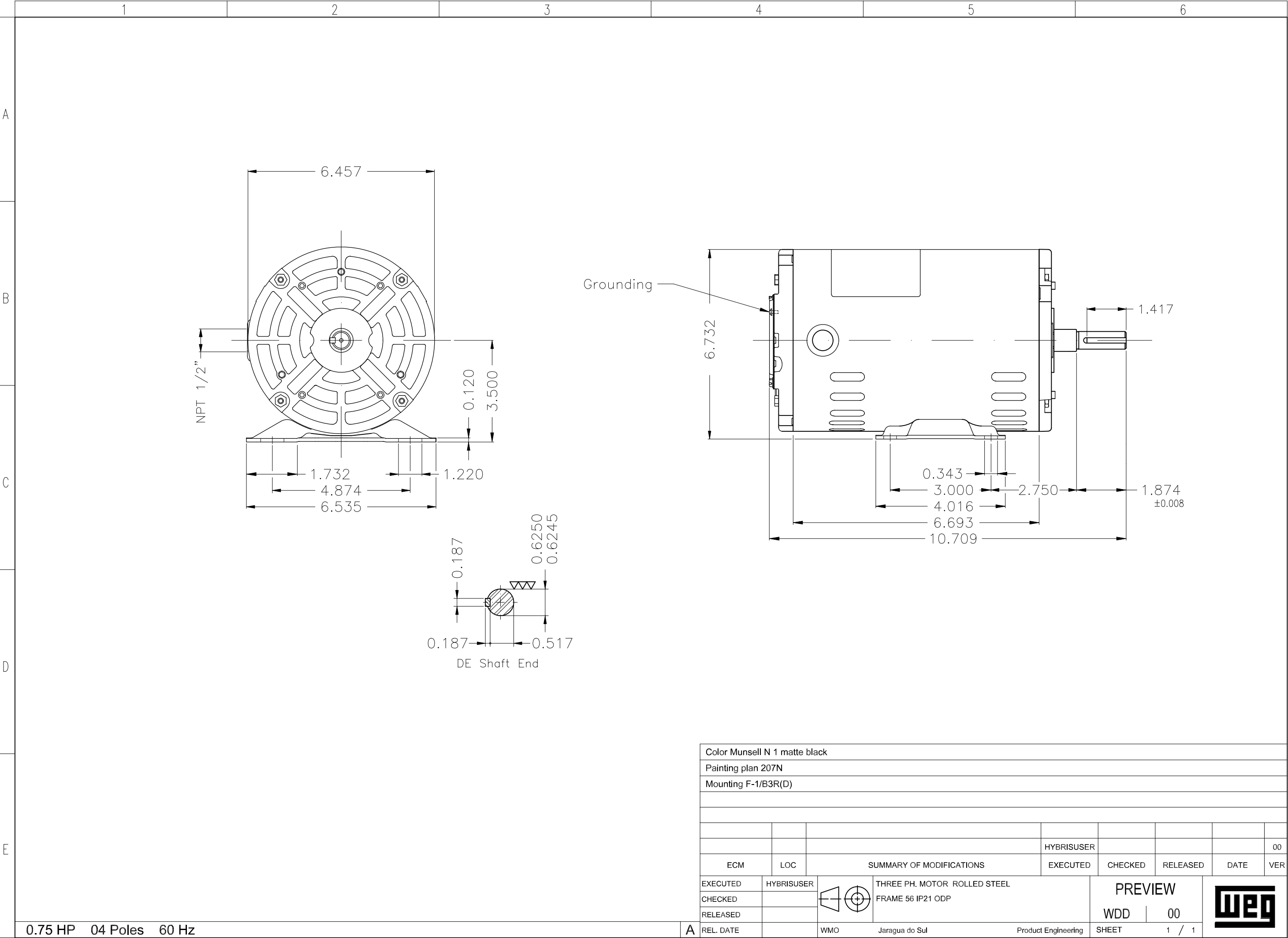


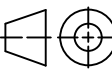

Performance : 575 V 60 Hz 4P

Rated current : 1.07 A
 LRC : 6.3
 Rated torque : 0.310 kgfm
 Locked rotor torque : 229 %
 Breakdown torque : 300 %
 Rated speed : 1755 rpm

Moment of inertia (J) : 0.0025 kgm²
 Duty cycle : Cont.(S1)
 Insulation class : F
 Service factor : 1.25
 Temperature rise : 80 K

| Rev. | Changes Summary | Performed | Checked | Date |
|--------------|-----------------|-----------|---------|----------|
| | | | | |
| Performed by | | | Page | Revision |
| Checked by | | | 2 / 2 | |
| Date | | | | |



| | | | | | | | | | |
|-------------------------------|------------|---|----------------|---------------------|----------|---------|---|------|-----|
| Color Munsell N 1 matte black | | | | | | | | | |
| Painting plan 207N | | | | | | | | | |
| Mounting F-1/B3R(D) | | | | | | | | | |
| | | | | | | | | | |
| | | | | | | | | | |
| | | | | HYBRISUSER | | | | | 00 |
| ECM | LOC | SUMMARY OF MODIFICATIONS | | | EXECUTED | CHECKED | RELEASED | DATE | VER |
| EXECUTED | HYBRISUSER |  THREE PH. MOTOR ROLLED STEEL FRAME 56 IP21 ODP | | | PREVIEW | |  | | |
| CHECKED | | | | | | | | | |
| RELEASED | | | | | | | | | |
| REL. DATE | | WMO | Jaragua do Sul | Product Engineering | SHEET | 1 / 1 | | | |