

# DATA SHEET



## Single Phase Induction Motor - Squirrel Cage

Customer :

Product line : Compressor Duty Single-Phase Product code : 11129592

Frame	: G56HC	Locked rotor time	: 10s (cold) 6s (hot)
Output	: 5 HP (3.7 kW)	Temperature rise	: 105 K
Poles	: 2	Duty cycle	: Cont.(S1)
Frequency	: 60 Hz	Ambient temperature	: -20°C to +40°C
Rated voltage	: 230 V	Altitude	: 1000 m.a.s.l.
Rated current	: 19.1 A	Protection degree	: IP21
L. R. Amperes	: 124 A	Cooling method	: IC01 - ODP
LRC	: 6.5x(Code G)	Mounting	: F-1
No load current	: 3.70 A	Rotation <sup>1</sup>	: Both (CW and CCW)
Rated speed	: 3455 rpm	Starting method	: Direct On Line
Slip	: 4.03 %	Approx. weight <sup>3</sup>	: 23.8 kg
Rated torque	: 1.05 kgfm		
Locked rotor torque	: 220 %		
Breakdown torque	: 200 %		
Insulation class	: F		
Service factor	: 1.00		
Moment of inertia (J)	: 0.0030 kgm <sup>2</sup>		

Output	50%	75%	100%	Foundation loads	
Efficiency (%)	83.0	85.0	85.0	Max. traction	: 55 kgf
Power Factor	0.99	0.99	0.99	Max. compression	: 79 kgf

		<u>Drive end</u>	<u>Non drive end</u>
Bearing type	:	6204 ZZ	6203 ZZ
Sealing	:	Without Bearing Seal	Without Bearing Seal
Lubrication interval	:	-	-
Lubricant amount	:	-	-
Lubricant type	:	Mobil Polyrex EM	

### Notes

This revision replaces and cancel the previous one, which must be eliminated.

- (1) Looking the motor from the shaft end.
- (2) Measured at 1m and with tolerance of +3dB(A).
- (3) Approximate weight subject to changes after manufacturing process.
- (4) At 100% of full load.

These are average values based on tests with sinusoidal power supply, subject to the tolerances stipulated in NEMA MG-1.

Rev.	Changes Summary	Performed	Checked	Date
Performed by				
Checked by			Page	Revision
Date	21/12/2024		1 / 2	

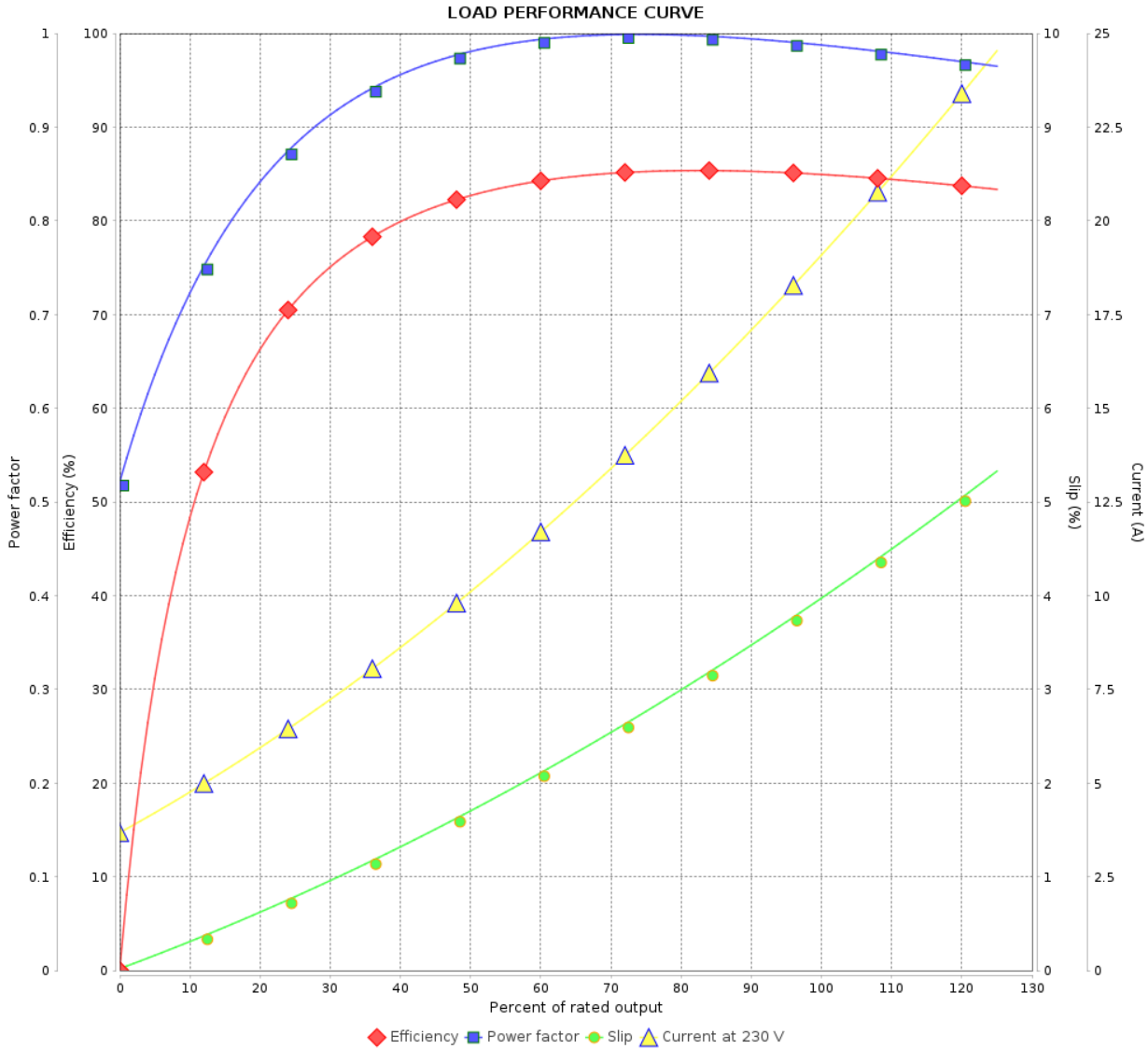
# LOAD PERFORMANCE CURVE

Single Phase Induction Motor - Squirrel Cage



Customer :

Product line : Compressor Duty Single-Phase Product code : 11129592



Performance : 230 V 60 Hz 2P

Rated current : 19.1 A  
 LRC : 6.5  
 Rated torque : 1.05 kgfm  
 Locked rotor torque : 220 %  
 Breakdown torque : 200 %  
 Rated speed : 3455 rpm

Moment of inertia (J) : 0.0030 kgm<sup>2</sup>  
 Duty cycle : Cont.(S1)  
 Insulation class : F  
 Service factor : 1.00  
 Temperature rise : 105 K

Rev.	Changes Summary	Performed	Checked	Date
Performed by			Page 2 / 2	Revision
Checked by				
Date	21/12/2024			

1 2 3 4 5 6

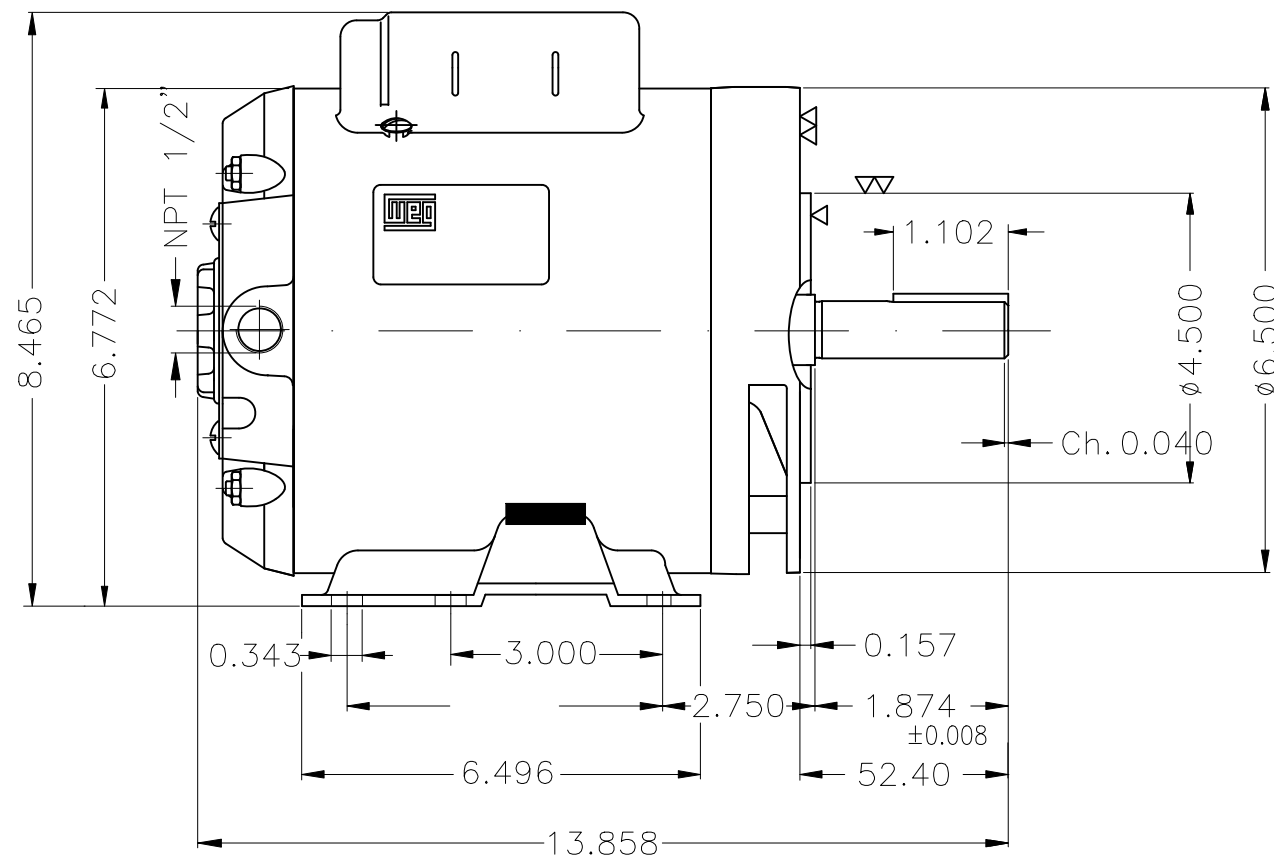
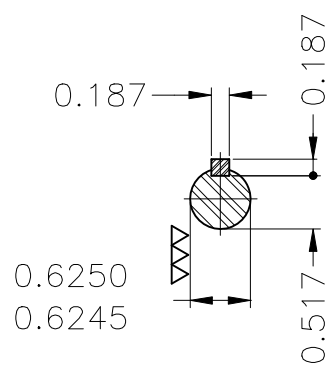
A



B

C

D

E



Bearing cap										
Color Munsell N 1 matte black										
Painting plan 207N										
Mounting B34D										
			HYBRISUSER				00			
ECM	LOC	SUMMARY OF MODIFICATIONS			EXECUTED	CHECKED	RELEASED	DATE	VER	
EXECUTED	HYBRISUSER	 SINGLE PH. MOTOR COMPRESSOR DUTY FRAME G56HC IP21 ODP			PREVIEW					
CHECKED					WDD	00				
RELEASED										
REL. DATE		WMO	Jaragua do Sul	Product Engineering	SHEET	1 / 1				

5 HP 02 Poles 60 Hz

A