

DATA SHEET

Three Phase Induction Motor - Squirrel Cage



Customer	:		
Product line	: Standard Efficiency Three-Phase	Product code :	13505139
Frame	: 56HC	Cooling method	: IC01 - ODP
Insulation class	: F	Mounting	: F-1
Duty cycle	: Cont.(S1)	Rotation ¹	: Both (CW and CCW)
Ambient temperature	: -20°C to +40°C	Starting method	: Direct On Line
Altitude	: 1000 m.a.s.l.	Approx. weight ³	: 15.1 kg
Design	: A	Moment of inertia (J)	: 0.0044 kgm ²
Output [HP]	2	1.5	1.5
Poles	4	4	4
Frequency [Hz]	60	50	50
Rated voltage [V]	230/460	190/380	220/415
Rated current [A]	6.22/3.11	5.46/2.73	5.70/3.02
L. R. Amperes [A]	41.7/20.8	36.0/18.0	38.2/20.2
LRC [A]	6.7x(Code K)	6.6x(Code J)	6.7x(Code L)
No load current [A]	4.00/2.00	3.80/1.90	5.09/2.70
Rated speed [RPM]	1740	1445	1455
Slip [%]	3.33	3.67	3.00
Rated torque [kgfm]	0.834	0.753	0.748
Locked rotor torque [%]	240	229	280
Breakdown torque [%]	250	280	340
Service factor		1.15	1.15
Temperature rise	80 K	80 K	105 K
Locked rotor time	12s (cold) 7s (hot)	0s (cold) 0s (hot)	0s (cold) 0s (hot)
Noise level ²	52.0 dB(A)	49.0 dB(A)	49.0 dB(A)
Efficiency (%)	25%		
	50%	75.5	75.3
	75%	78.5	78.9
	100%	78.5	79.4
Power Factor	25%		
	50%	0.54	0.53
	75%	0.68	0.67
	100%	0.77	0.77
Bearing type	: <u>Drive end</u> 6204 ZZ <u>Non drive end</u> 6202 ZZ	Foundation loads	
Sealing	: Without Bearing Seal Without Bearing Seal	Max. traction	: 74 kgf
		Max. compression	: 89 kgf
Lubrication interval	: -		
Lubricant amount	: -		
Lubricant type	: Mobil Polyrex EM		
Notes			
USABLE @208V 6.88A SF 1.00 SFA 6.88A			
This revision replaces and cancel the previous one, which must be eliminated. (1) Looking the motor from the shaft end. (2) Measured at 1m and with tolerance of +3dB(A). (3) Approximate weight subject to changes after manufacturing process. (4) At 100% of full load.		These are average values based on tests with sinusoidal power supply, subject to the tolerances stipulated in NEMA MG-1.	
Rev.	Changes Summary	Performed	Checked
Performed by			
Checked by			
Date	17/05/2022		
		Page	Revision
		1 / 4	

LOAD PERFORMANCE CURVE

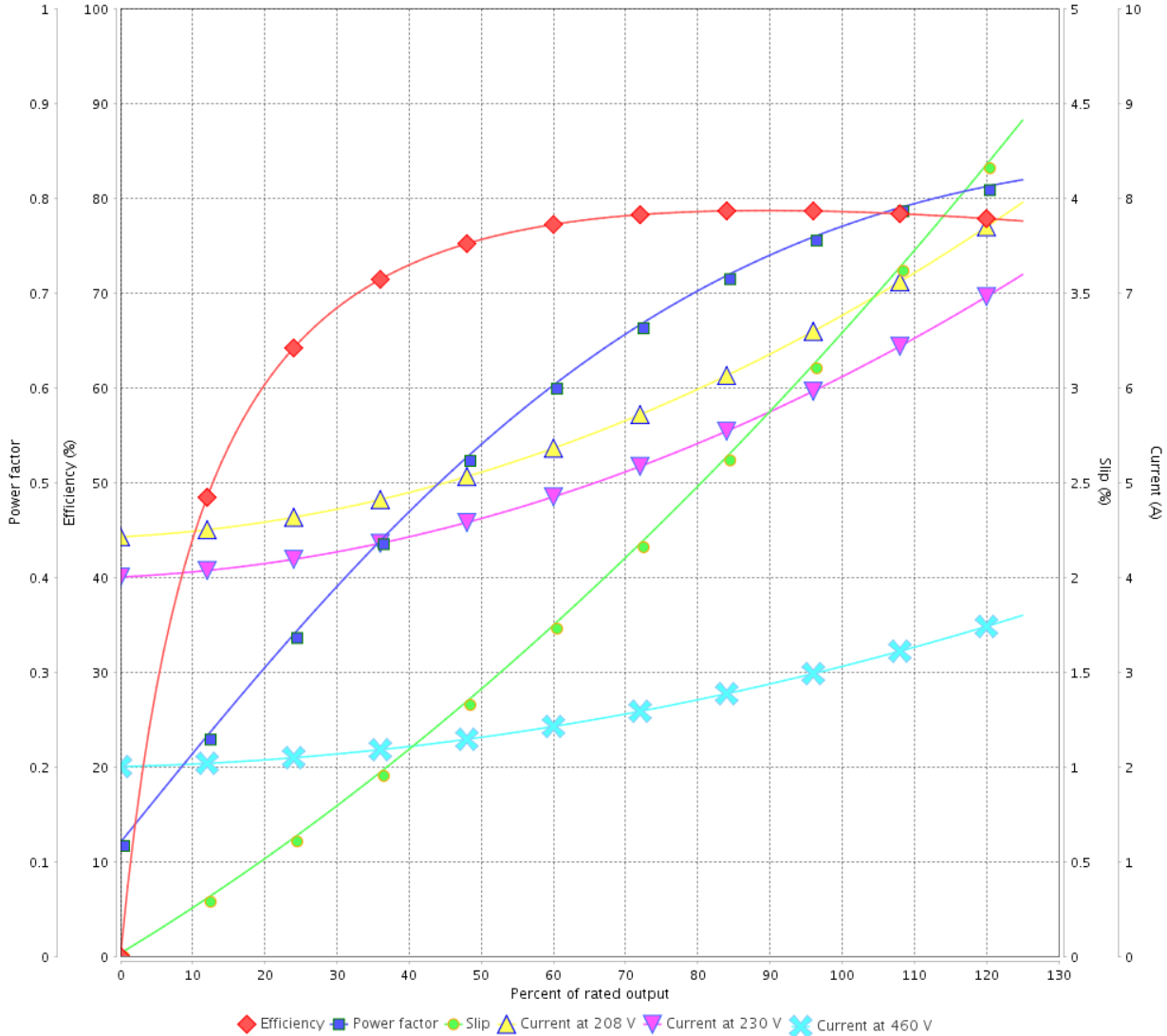
Three Phase Induction Motor - Squirrel Cage



Customer :

Product line : Standard Efficiency Three-Phase Product code : 13505139

LOAD PERFORMANCE CURVE



Performance : 230/460 V 60 Hz 4P

Rated current : 6.22/3.11 A
 LRC : 6.7
 Rated torque : 0.834 kgfm
 Locked rotor torque : 240 %
 Breakdown torque : 250 %
 Rated speed : 1740 rpm

Moment of inertia (J) : 0.0044 kgm²
 Duty cycle : Cont.(S1)
 Insulation class : F
 Service factor :
 Temperature rise : 80 K
 Design : A

Rev.	Changes Summary	Performed	Checked	Date
Performed by			Page	Revision
Checked by				
Date				

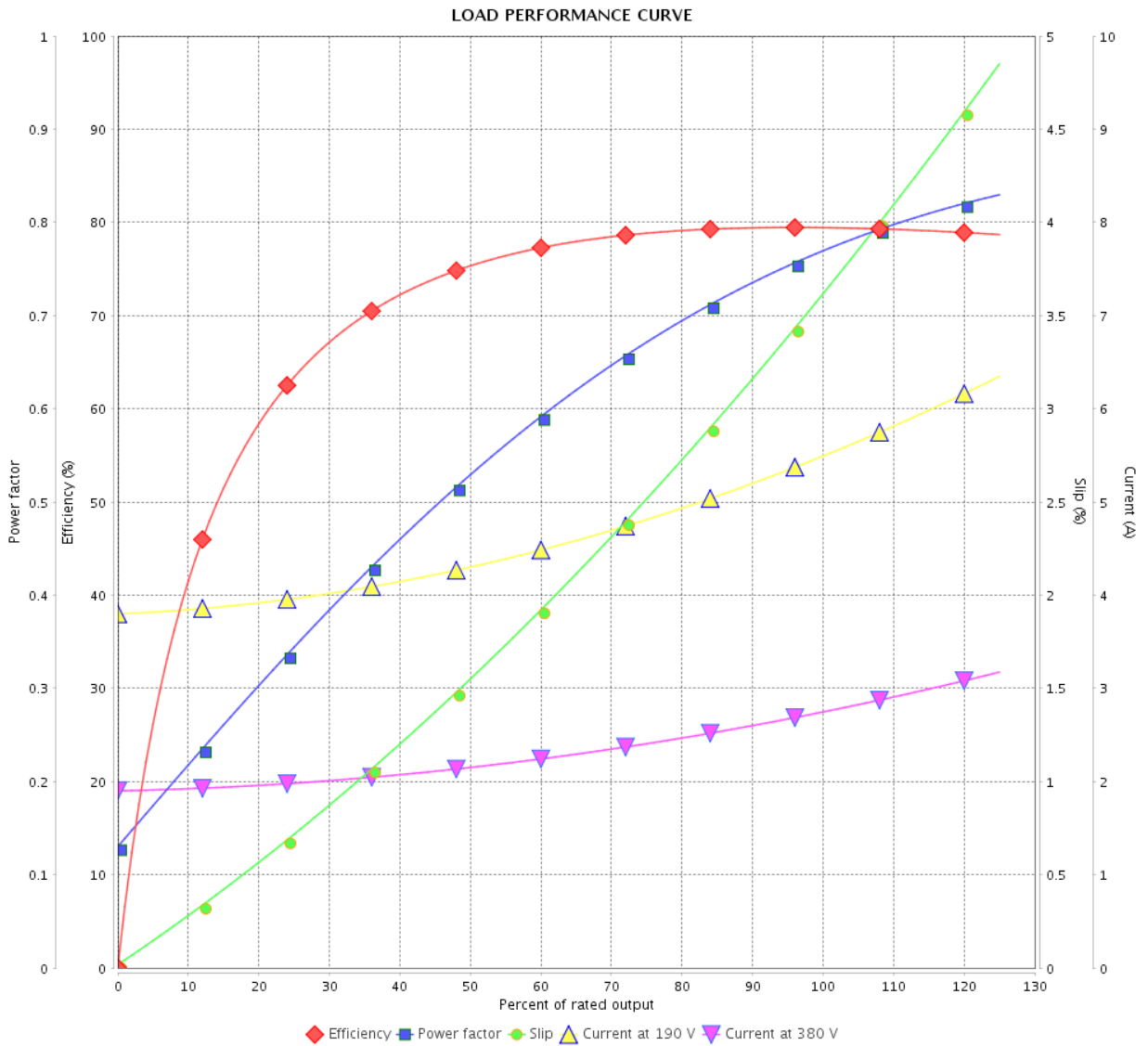
LOAD PERFORMANCE CURVE

Three Phase Induction Motor - Squirrel Cage



Customer : _____

Product line : Standard Efficiency Three-Phase Product code : 13505139



Performance : 190/380 V 50 Hz 4P

Rated current : 5.46/2.73 A
 LRC : 6.6
 Rated torque : 0.753 kgfm
 Locked rotor torque : 229 %
 Breakdown torque : 280 %
 Rated speed : 1445 rpm

Moment of inertia (J) : 0.0044 kgm²
 Duty cycle : Cont.(S1)
 Insulation class : F
 Service factor : 1.15
 Temperature rise : 80 K
 Design : A

Rev.	Changes Summary	Performed	Checked	Date
Performed by			Page	Revision
Checked by				
Date				
			3 / 4	

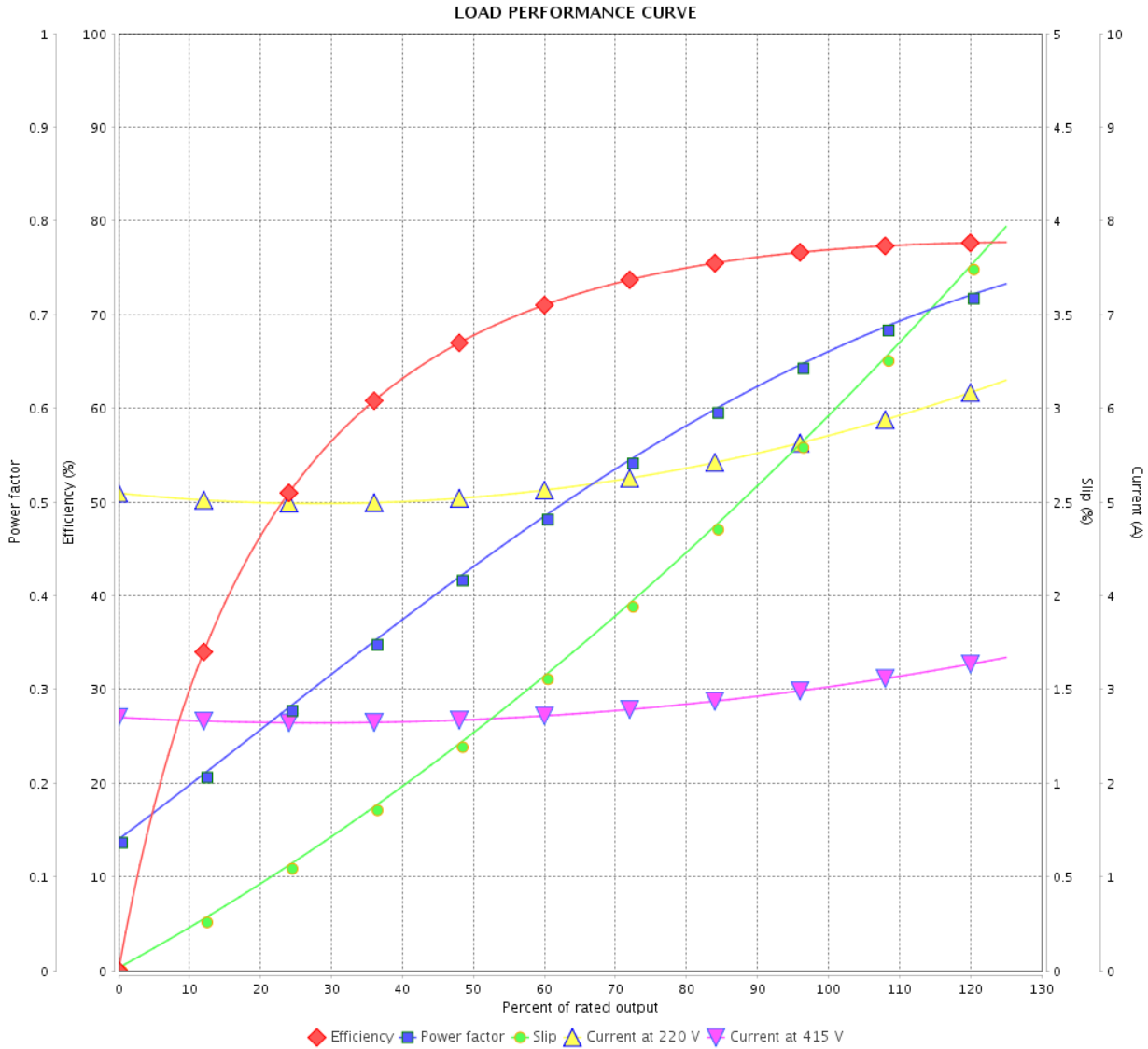
LOAD PERFORMANCE CURVE

Three Phase Induction Motor - Squirrel Cage



Customer :

Product line : Standard Efficiency Three-Phase Product code : 13505139

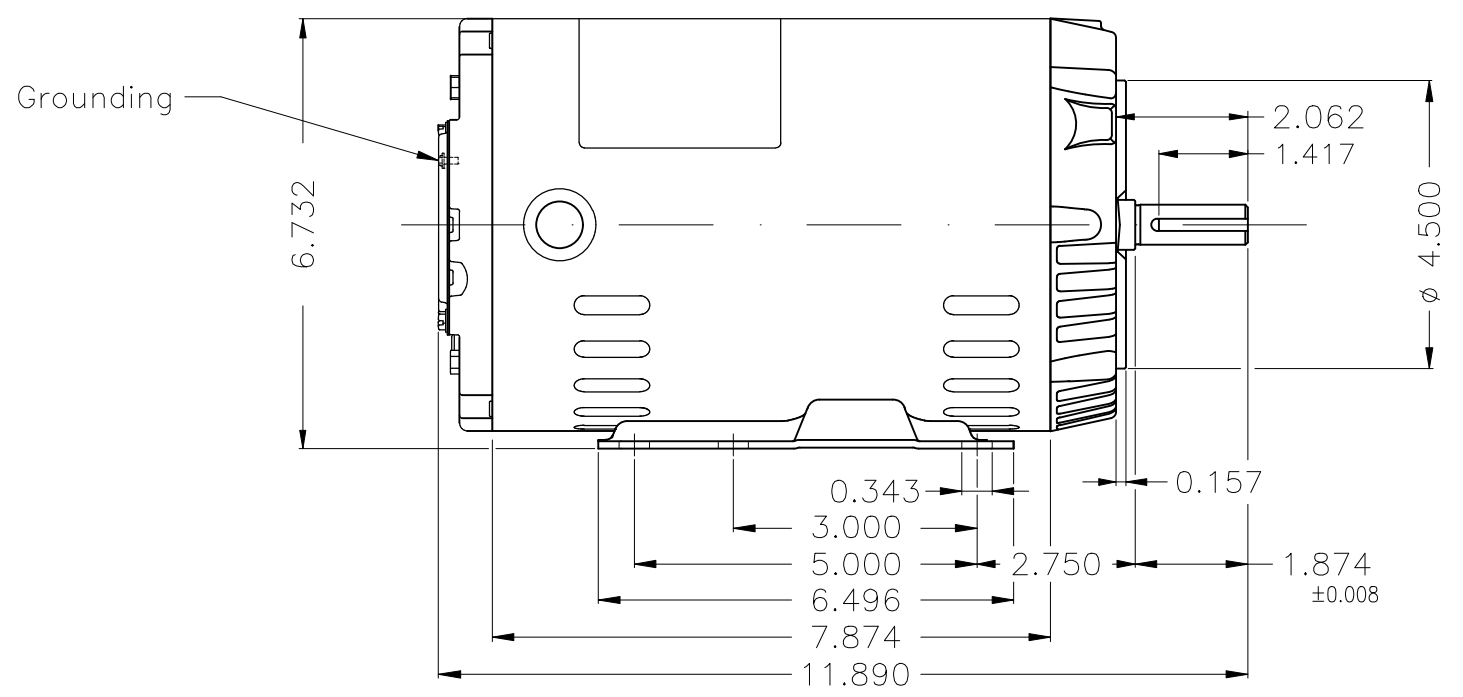
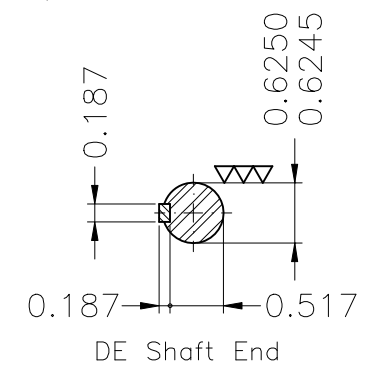
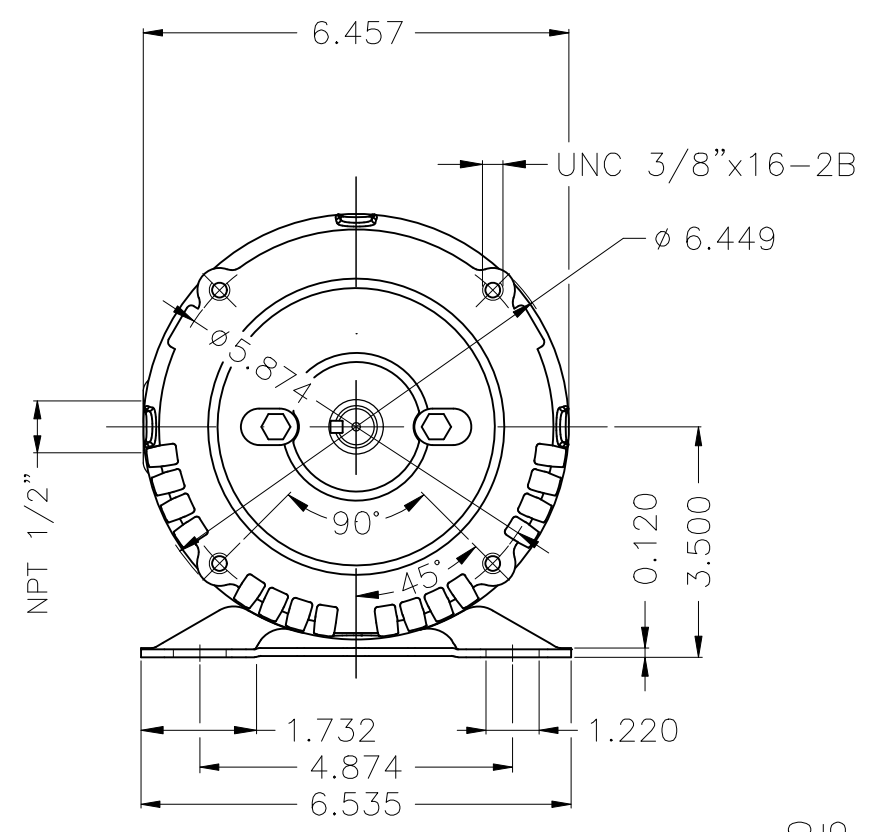


Performance : 220/415 V 50 Hz 4P

Rated current : 5.70/3.02 A
 LRC : 6.7
 Rated torque : 0.748 kgfm
 Locked rotor torque : 280 %
 Breakdown torque : 340 %
 Rated speed : 1455 rpm

Moment of inertia (J) : 0.0044 kgm²
 Duty cycle : Cont.(S1)
 Insulation class : F
 Service factor : 1.15
 Temperature rise : 105 K
 Design : A

Rev.	Changes Summary	Performed	Checked	Date
Performed by			Page 4 / 4	Revision
Checked by				
Date	17/05/2022			



Color Munsell N 1 matte black									
Painting plan 207N									
Mounting B34D									
					HYBRISUSER	00			
ECM	LOC	SUMMARY OF MODIFICATIONS			EXECUTED	CHECKED	RELEASED	DATE	VER
EXECUTED	HYBRISUSER	THREE PH. MOTOR ROLLED STEEL				PREVIEW			WDD 00 SHEET 1 / 1
CHECKED		FRAME 56HC IP21 ODP							
RELEASED									
REL. DATE		WMO	Jaragua do Sul	Product Engineering					

2 HP 04 Poles 60 Hz

A