

DATA SHEET

Three Phase Induction Motor - Squirrel Cage



Customer :				
Product line : Three-Phase		Product code : 13623810		
Frame : 56C	Cooling method : IC01 - ODP			
Insulation class : F	Mounting : F-1			
Duty cycle : Cont.(S1)	Rotation ¹ : Both (CW and CCW)			
Ambient temperature : -20°C to +40°C	Starting method : Direct On Line			
Altitude : 1000 m.a.s.l.	Approx. weight ³ : 12.6 kg			
Design : A	Moment of inertia (J) : 0.0035 kgm ²			
Output [HP]	1.5			
Poles	2			
Frequency [Hz]	60			
Rated voltage [V]	575			
Rated current [A]	1.48			
L. R. Amperes [A]	12.7			
LRC [A]	8.6x(Code K)			
No load current [A]	0.647			
Rated speed [RPM]	3510			
Slip [%]	2.50			
Rated torque [kgfm]	0.310			
Locked rotor torque [%]	210			
Breakdown torque [%]	330			
Service factor	1.15			
Temperature rise	80 K			
Locked rotor time	36s (cold) 20s (hot)			
Noise level ²	62.0 dB(A)			
Efficiency (%)	25%			
	50%	81.5		
	75%	84.0		
	100%	84.0		
Power Factor	25%			
	50%	0.73		
	75%	0.83		
	100%	0.89		
Bearing type : 6204 ZZ	Drive end	Non drive end	Foundation loads	
Sealing : Without			Max. traction	: 26 kgf
	Bearing Seal	Bearing Seal	Max. compression	: 39 kgf
Lubrication interval : -	-	-		
Lubricant amount : -	-	-		
Lubricant type : Mobil Polyrex EM				
Notes				
This revision replaces and cancel the previous one, which must be eliminated. (1) Looking the motor from the shaft end. (2) Measured at 1m and with tolerance of +3dB(A). (3) Approximate weight subject to changes after manufacturing process. (4) At 100% of full load.				
These are average values based on tests with sinusoidal power supply, subject to the tolerances stipulated in NEMA MG-1.				
Rev.	Changes Summary		Performed	Checked
Performed by				
Checked by			Page	Revision
Date	17/05/2022		1 / 2	

LOAD PERFORMANCE CURVE

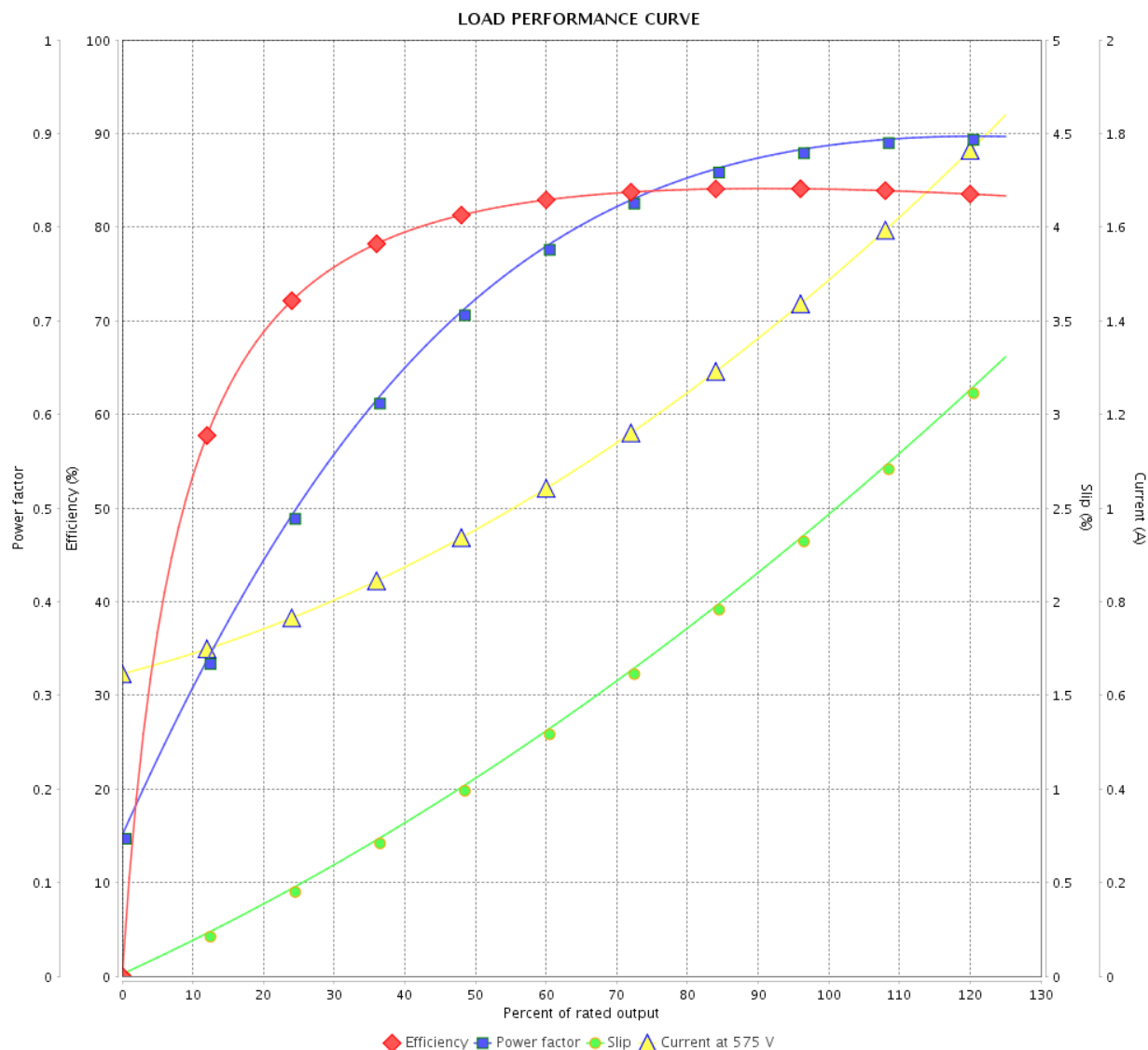
Three Phase Induction Motor - Squirrel Cage



Customer :

Product line : Three-Phase

Product code : 13623810

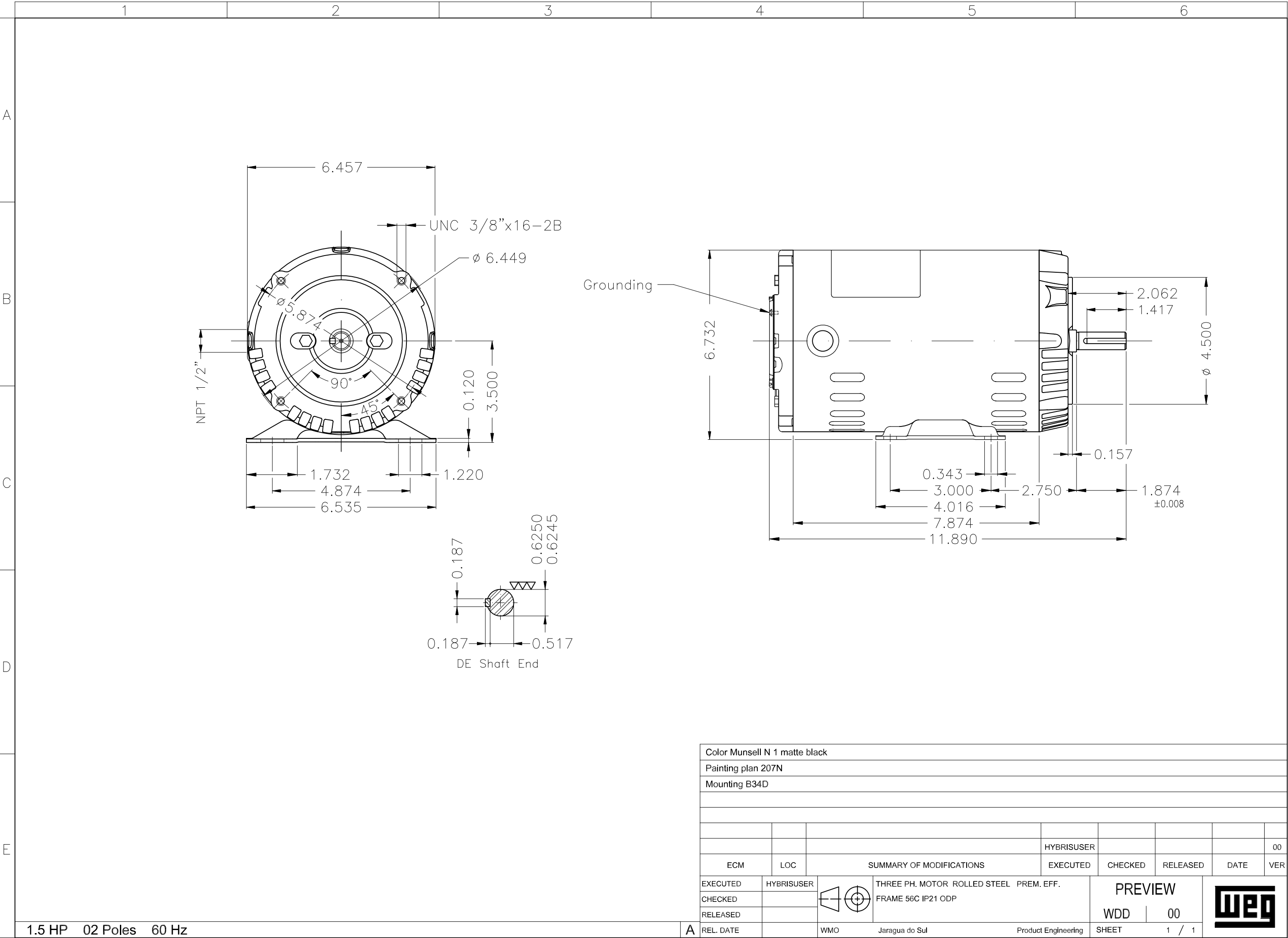


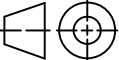

Performance : 575 V 60 Hz 2P

Rated current : 1.48 A
 LRC : 8.6
 Rated torque : 0.310 kgfm
 Locked rotor torque : 210 %
 Breakdown torque : 330 %
 Rated speed : 3510 rpm

Moment of inertia (J) : 0.0035 kgm²
 Duty cycle : Cont.(S1)
 Insulation class : F
 Service factor : 1.15
 Temperature rise : 80 K
 Design : A

Rev.	Changes Summary		Performed	Checked	Date
Performed by				Page	Revision
Checked by				2 / 2	
Date					



Color Munsell N 1 matte black									
Painting plan 207N									
Mounting B34D									
						HYBRISUSER			00
ECM	LOC	SUMMARY OF MODIFICATIONS				EXECUTED	CHECKED	RELEASED	DATE VER
EXECUTED	HYBRISUSER		THREE PH. MOTOR ROLLED STEEL PREM. EFF. FRAME 56C IP21 ODP			PREVIEW			
CHECKED									
RELEASED									
REL. DATE									
		WMO	Jaragua do Sul	Product Engineering	SHEET	1 / 1			