

DATA SHEET

Three Phase Induction Motor - Squirrel Cage



Customer :

Product line : Three-Phase

Product code : 13702734

Frame	: 56C	Cooling method	: IC01 - ODP
Insulation class	: F	Mounting	: F-1
Duty cycle	: Cont.(S1)	Rotation ¹	: Both (CW and CCW)
Ambient temperature	: -20°C to +40°C	Starting method	: Direct On Line
Altitude	: 1000 m.a.s.l.	Approx. weight ³	: 17.0 kg
Design	: A	Moment of inertia (J)	: 0.0055 kgm ²

Output [HP]	1.5	1.5	1.5
Poles	4	4	4
Frequency [Hz]	60	50	50
Rated voltage [V]	230/460	190/380	220/415
Rated current [A]	4.20/2.10	4.94/2.47	4.51/2.39
L. R. Amperes [A]	37.0/18.5	33.6/16.8	35.2/18.6
LRC [A]	8.8x(Code L)	6.8x(Code J)	7.8x(Code K)
No load current [A]	2.60/1.30	2.61/1.30	2.91/1.54
Rated speed [RPM]	1760	1445	1455
Slip [%]	2.22	3.67	3.00
Rated torque [kgfm]	0.619	0.753	0.748
Locked rotor torque [%]	290	220	280
Breakdown torque [%]	350	280	340
Service factor		1.15	1.15
Temperature rise	80 K	80 K	80 K
Locked rotor time	25s (cold) 14s (hot)	27s (cold) 15s (hot)	21s (cold) 12s (hot)
Noise level ²	52.0 dB(A)	49.0 dB(A)	49.0 dB(A)
Efficiency (%)	25%		
	50%	84.0	81.6
	75%	85.5	84.0
	100%	86.5	84.2
Power Factor	25%		
	50%	0.53	0.53
	75%	0.66	0.67
	100%	0.76	0.76

Bearing type	: 6204 ZZ	6202 ZZ	Foundation loads
	: Without	Without	
Sealing	: Bearing Seal	Bearing Seal	Max. traction : 73 kgf
			Max. compression : 90 kgf
Lubrication interval	: -	-	
Lubricant amount	: -	-	
Lubricant type	: Mobil Polyrex EM		

Notes

USABLE @208V 4.64A SF 1.00 SFA 4.64A

This revision replaces and cancel the previous one, which must be eliminated.

- (1) Looking the motor from the shaft end.
- (2) Measured at 1m and with tolerance of +3dB(A).
- (3) Approximate weight subject to changes after manufacturing process.
- (4) At 100% of full load.

These are average values based on tests with sinusoidal power supply, subject to the tolerances stipulated in NEMA MG-1.

Rev.	Changes Summary	Performed	Checked	Date
Performed by				
Checked by				
Date	17/05/2022			

Page 1 / 4
Revision

LOAD PERFORMANCE CURVE

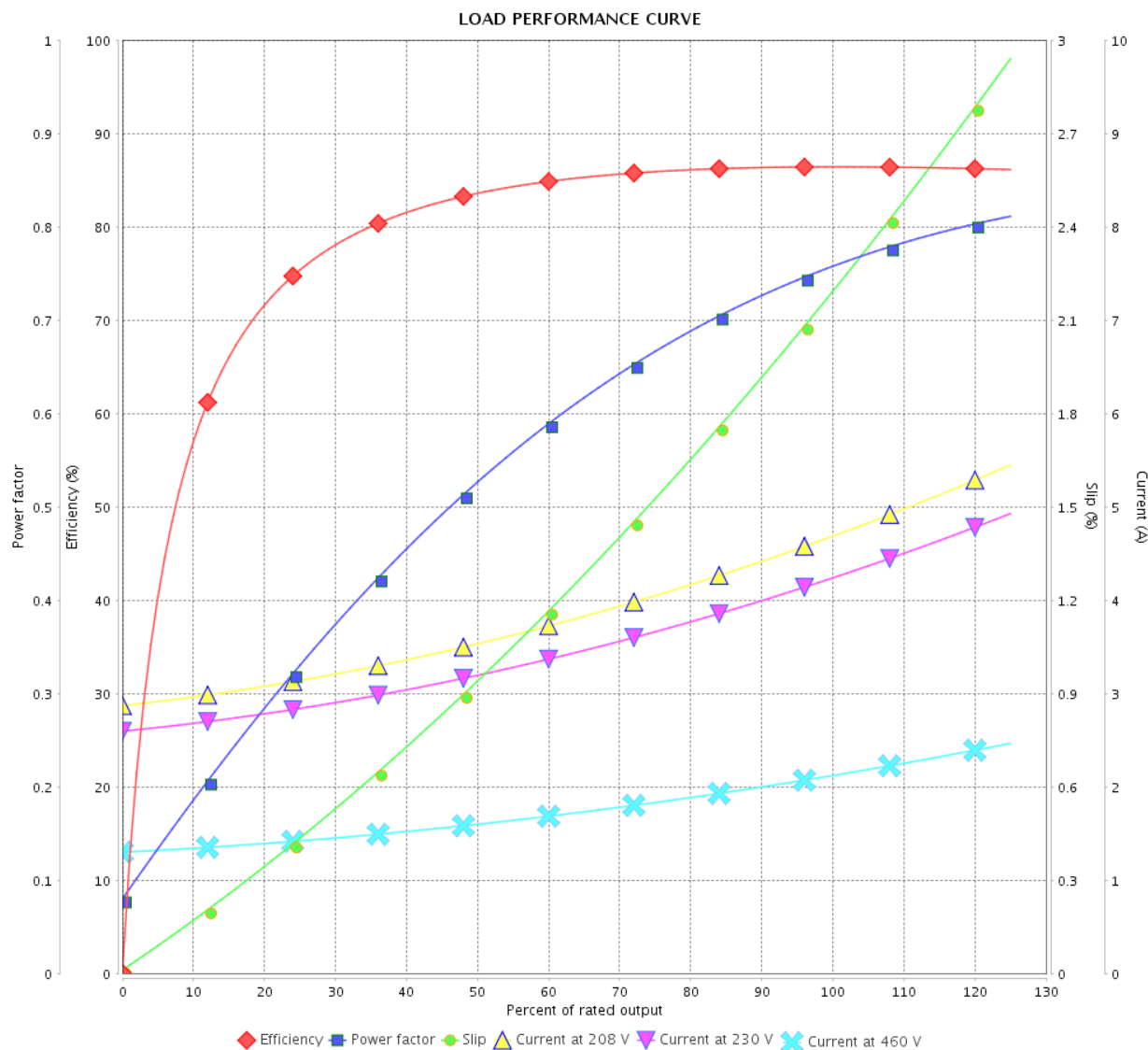
Three Phase Induction Motor - Squirrel Cage



Customer :

Product line : Three-Phase

Product code : 13702734



Performance : 230/460 V 60 Hz 4P

Rated current : 4.20/2.10 A
 LRC : 8.8
 Rated torque : 0.619 kgfm
 Locked rotor torque : 290 %
 Breakdown torque : 350 %
 Rated speed : 1760 rpm

Moment of inertia (J) : 0.0055 kgm²
 Duty cycle : Cont.(S1)
 Insulation class : F
 Service factor :
 Temperature rise : 80 K
 Design : A

Rev.	Changes Summary		Performed	Checked	Date
Performed by				Page	Revision
Checked by				2 / 4	
Date					

LOAD PERFORMANCE CURVE

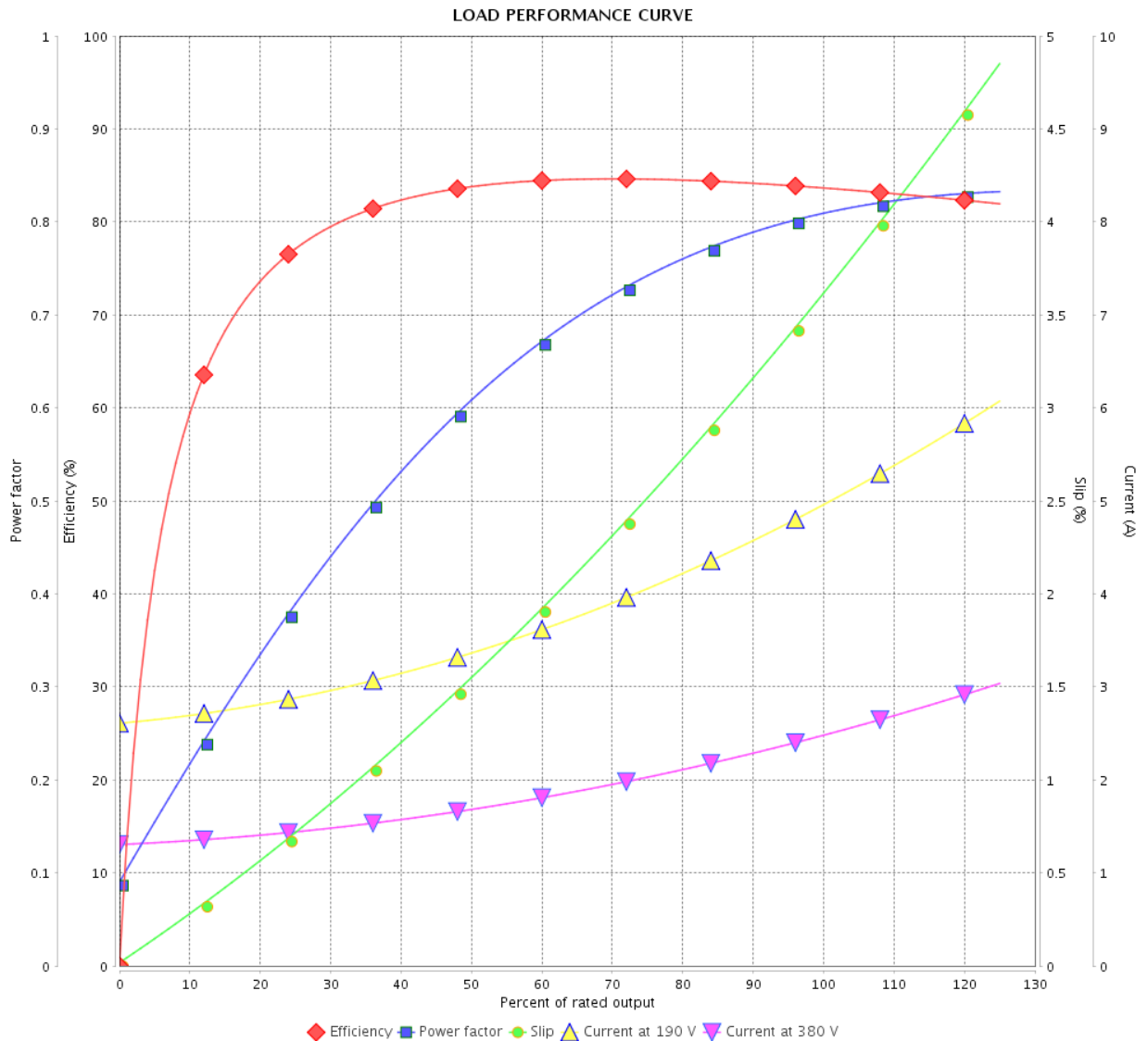
Three Phase Induction Motor - Squirrel Cage



Customer :

Product line : Three-Phase

Product code : 13702734



Performance : 190/380 V 50 Hz 4P

Rated current : 4.94/2.47 A
 LRC : 6.8
 Rated torque : 0.753 kgfm
 Locked rotor torque : 220 %
 Breakdown torque : 280 %
 Rated speed : 1445 rpm

Moment of inertia (J) : 0.0055 kgm²
 Duty cycle : Cont.(S1)
 Insulation class : F
 Service factor : 1.15
 Temperature rise : 80 K
 Design : A

Rev.	Changes Summary	Performed	Checked	Date
Performed by		Page 3 / 4Revision		
Checked by				
Date	17/05/2022			

LOAD PERFORMANCE CURVE

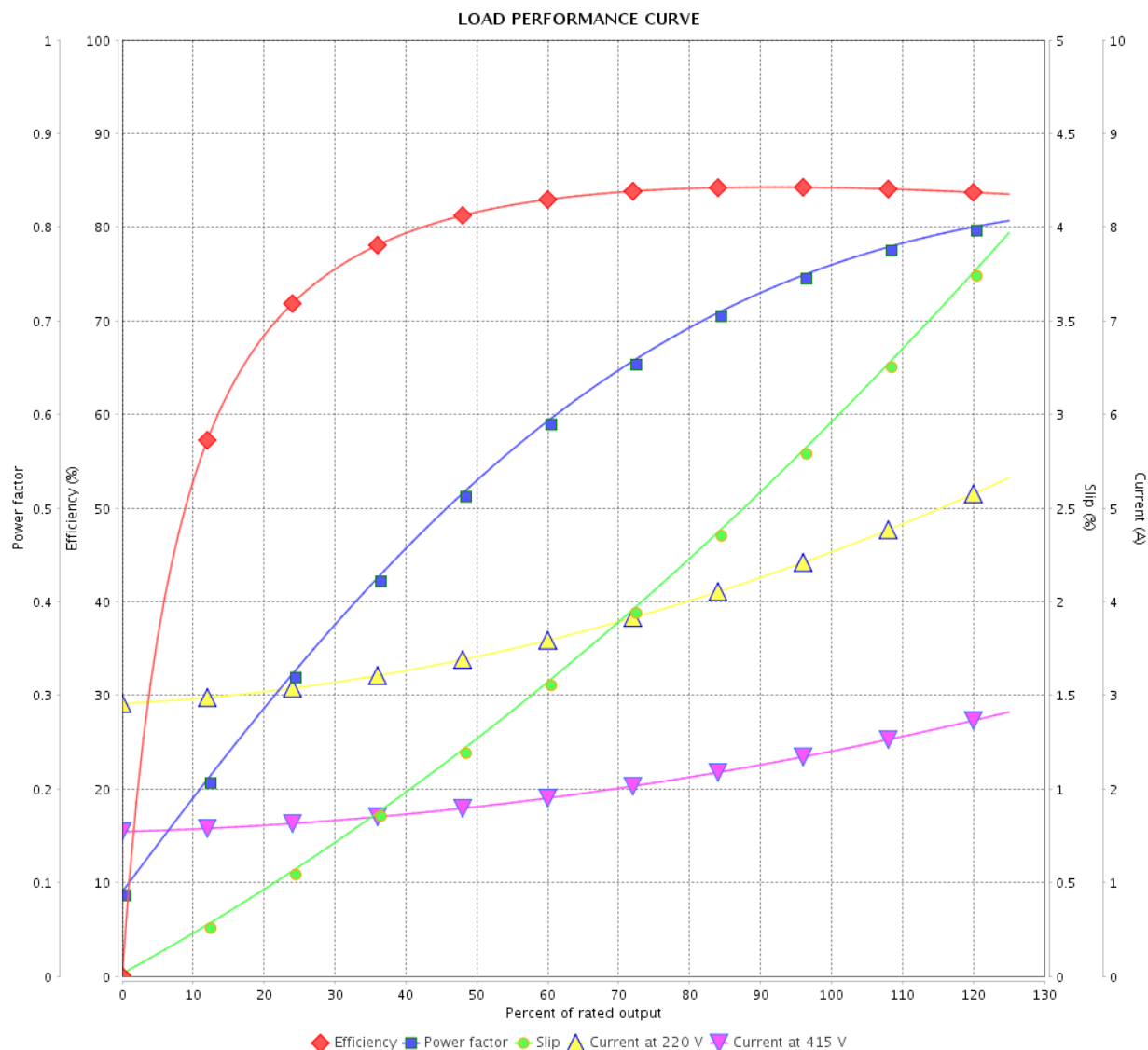
Three Phase Induction Motor - Squirrel Cage



Customer :

Product line : Three-Phase

Product code : 13702734

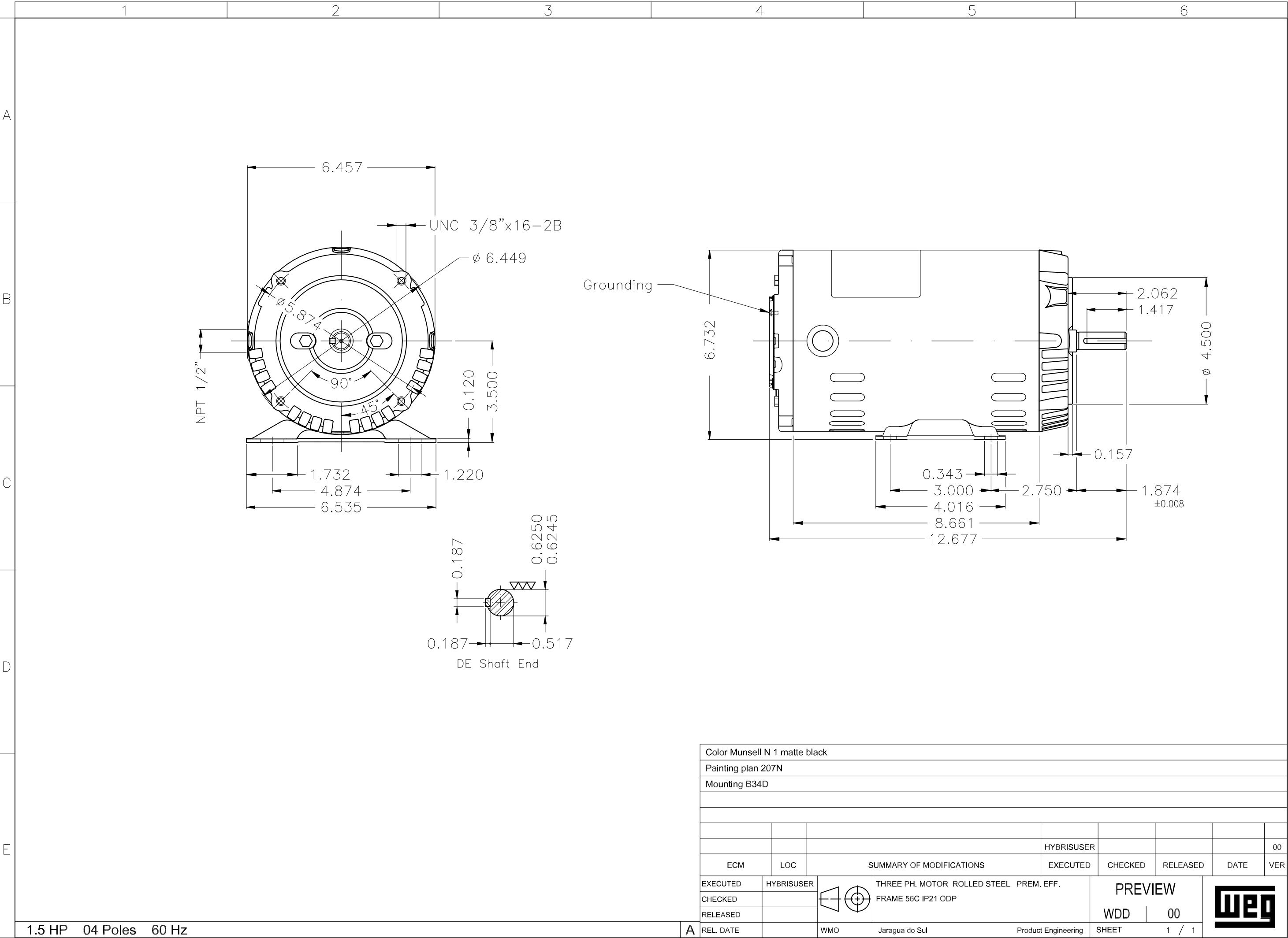


Performance : 220/415 V 50 Hz 4P

Rated current : 4.51/2.39 A
 LRC : 7.8
 Rated torque : 0.748 kgfm
 Locked rotor torque : 280 %
 Breakdown torque : 340 %
 Rated speed : 1455 rpm

Moment of inertia (J) : 0.0055 kgm²
 Duty cycle : Cont.(S1)
 Insulation class : F
 Service factor : 1.15
 Temperature rise : 80 K
 Design : A

Rev.	Changes Summary		Performed	Checked	Date
Performed by				Page 4 / 4	Revision
Checked by					
Date					
	17/05/2022				



Color Munsell N 1 matte black									
Painting plan 207N									
Mounting B34D									