

# DATA SHEET

## Single Phase Induction Motor - Squirrel Cage



Customer :					
Product line : Single-Phase		Product code : 13383187			
Frame : 56HC	Insulation class : F	Cooling method : IC01 - ODP	Mounting : F-1		
Duty cycle : Cont.(S1)	Ambient temperature : -20°C to +40°C	Rotation <sup>1</sup> : Both (CW and CCW)	Starting method : Direct On Line		
Altitude : 1000 m.a.s.l.	Design : L	Approx. weight <sup>3</sup> : 19.5 kg	Moment of inertia (J) : 0.0057 kgm <sup>2</sup>		
Output [HP]	1.5				
Poles	4				
Frequency [Hz]	60				
Rated voltage [V]	115/208-230				
Rated current [A]	19.0/10.5-9.49				
L. R. Amperes [A]	131/72.5-65.5				
LRC [A]	6.9x(Code J)				
No load current [A]	15.4/6.64-7.70				
Rated speed [RPM]	1745				
Slip [%]	3.06				
Rated torque [kgfm]	0.624				
Locked rotor torque [%]	270				
Breakdown torque [%]	270				
Service factor					
Temperature rise	80 K				
Locked rotor time	12s (cold) 7s (hot)				
Noise level <sup>2</sup>	52.0 dB(A)				
Efficiency (%)	25%				
	50%	66.0			
	75%	72.0			
	100%	73.0			
Power Factor	25%				
	50%	0.48			
	75%	0.60			
	100%	0.69			
Bearing type : 6204 ZZ	Drive end	Non drive end	Foundation loads		
Sealing : Without			Max. traction : 43 kgf		
	Bearing Seal	Bearing Seal	Max. compression : 63 kgf		
Lubrication interval : -	-	-			
Lubricant amount : -	-	-			
Lubricant type : Mobil Polyrex EM					
Notes					
This revision replaces and cancel the previous one, which must be eliminated. (1) Looking the motor from the shaft end. (2) Measured at 1m and with tolerance of +3dB(A). (3) Approximate weight subject to changes after manufacturing process. (4) At 100% of full load.			These are average values based on tests with sinusoidal power supply, subject to the tolerances stipulated in NEMA MG-1.		
Rev.	Changes Summary		Performed	Checked	Date
Performed by					
Checked by					
Date	17/05/2022			Page 1 / 2	Revision

# LOAD PERFORMANCE CURVE

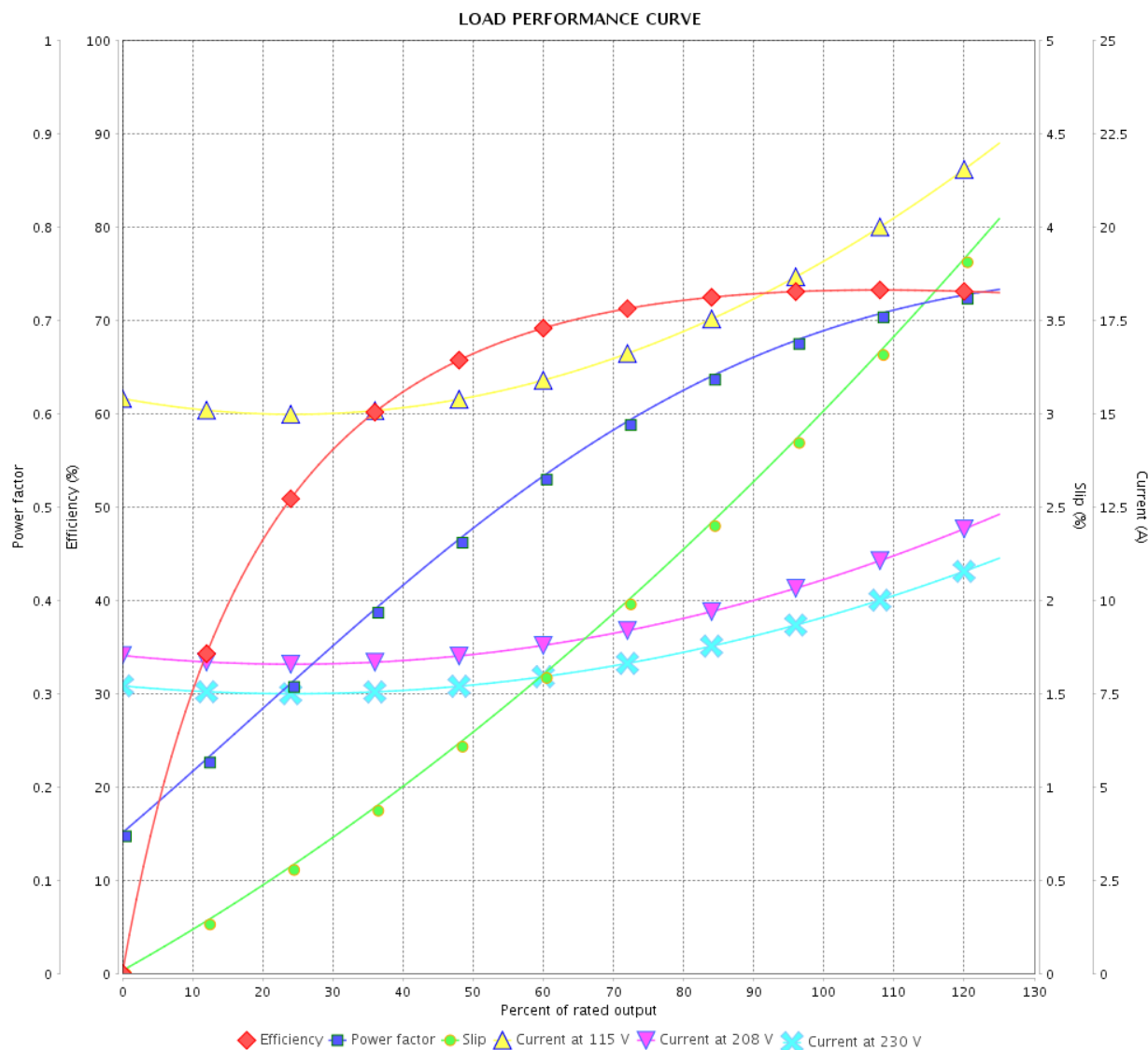
Single Phase Induction Motor - Squirrel Cage



Customer :

Product line : Single-Phase

Product code : 13383187

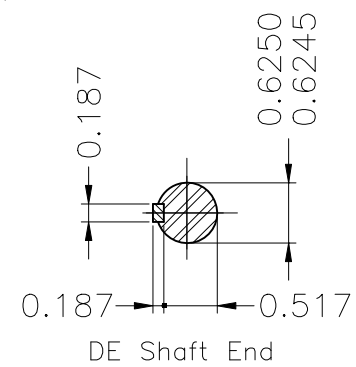


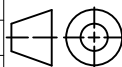

Performance : 115/208-230 V 60 Hz 4P

Rated current : 19.0/10.5-9.49 A  
 LRC : 6.9  
 Rated torque : 0.624 kgfm  
 Locked rotor torque : 270 %  
 Breakdown torque : 270 %  
 Rated speed : 1745 rpm

Moment of inertia (J) : 0.0057 kgm<sup>2</sup>  
 Duty cycle : Cont.(S1)  
 Insulation class : F  
 Service factor :  
 Temperature rise : 80 K  
 Design : L

Rev.	Changes Summary		Performed	Checked	Date
Performed by				Page	Revision
Checked by				2 / 2	
Date					



Color Munsell N 1 matte black										
Painting plan 207N										
Mounting B34D										
							HYBRISUSER			00
ECM	LOC	SUMMARY OF MODIFICATIONS					EXECUTED	CHECKED	RELEASED	DATE VER
EXECUTED	HYBRISUSER		SINGLE PH. MOTOR ROLLED STEEL FRAME 56HC IP21 ODP				PREVIEW WDD   00			
CHECKED										
RELEASED										
REL. DATE		WMO	Jaragua do Sul	Product Engineering	SHEET	1 / 1				