

DATA SHEET

Three Phase Induction Motor - Squirrel Cage



Customer :					
Product line : Three-Phase		Product code : 13702732			
Frame : 56C	Insulation class : F	Cooling method : IC01 - ODP	Mounting : F-1		
Duty cycle : Cont.(S1)	Ambient temperature : -20°C to +40°C	Rotation ¹ : Both (CW and CCW)	Starting method : Direct On Line		
Altitude : 1000 m.a.s.l.	Design : A	Approx. weight ³ : 12.4 kg	Moment of inertia (J) : 0.0036 kgm ²		
Output [HP]	1				
Poles	4				
Frequency [Hz]	60				
Rated voltage [V]	575				
Rated current [A]	1.26				
L. R. Amperes [A]	9.55				
LRC [A]	7.6x(Code L)				
No load current [A]	0.880				
Rated speed [RPM]	1760				
Slip [%]	2.22				
Rated torque [kgfm]	0.412				
Locked rotor torque [%]	280				
Breakdown torque [%]	320				
Service factor	1.15				
Temperature rise	80 K				
Locked rotor time	30s (cold) 17s (hot)				
Noise level ²	52.0 dB(A)				
Efficiency (%)	25%				
	50%	78.5			
	75%	82.5			
	100%	83.5			
Power Factor	25%				
	50%	0.49			
	75%	0.63			
	100%	0.72			
Bearing type : 6204 ZZ	Drive end	Non drive end	Foundation loads		
Sealing : Without			Max. traction : 36 kgf		
	Bearing Seal	Bearing Seal	Max. compression : 48 kgf		
Lubrication interval : -	-	-			
Lubricant amount : -	-	-			
Lubricant type : Mobil Polyrex EM					
Notes					
This revision replaces and cancel the previous one, which must be eliminated. (1) Looking the motor from the shaft end. (2) Measured at 1m and with tolerance of +3dB(A). (3) Approximate weight subject to changes after manufacturing process. (4) At 100% of full load.			These are average values based on tests with sinusoidal power supply, subject to the tolerances stipulated in NEMA MG-1.		
Rev.	Changes Summary		Performed	Checked	Date
Performed by					
Checked by					
Date	17/05/2022			Page 1 / 2	Revision

LOAD PERFORMANCE CURVE

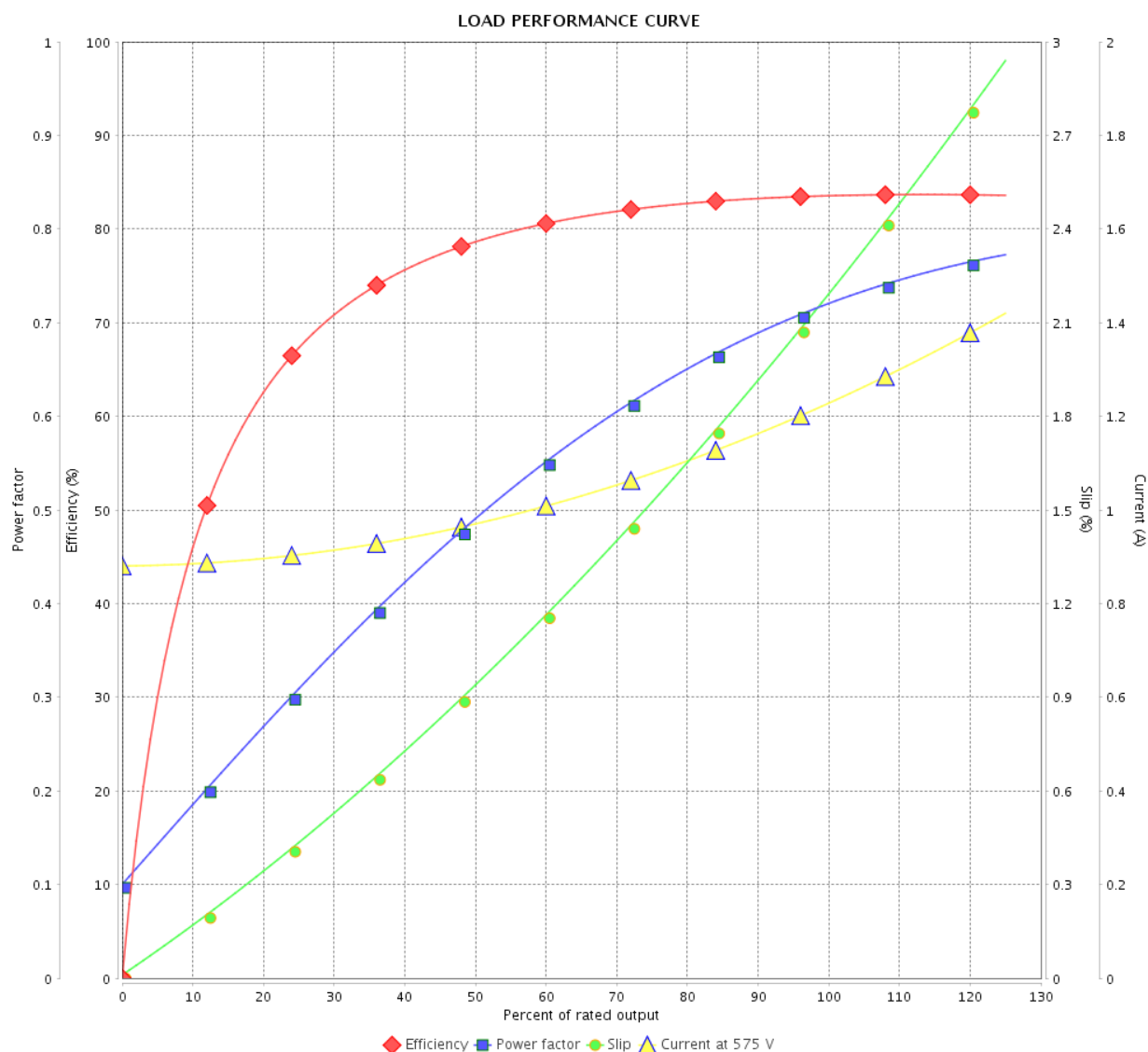
Three Phase Induction Motor - Squirrel Cage



Customer :

Product line : Three-Phase

Product code : 13702732

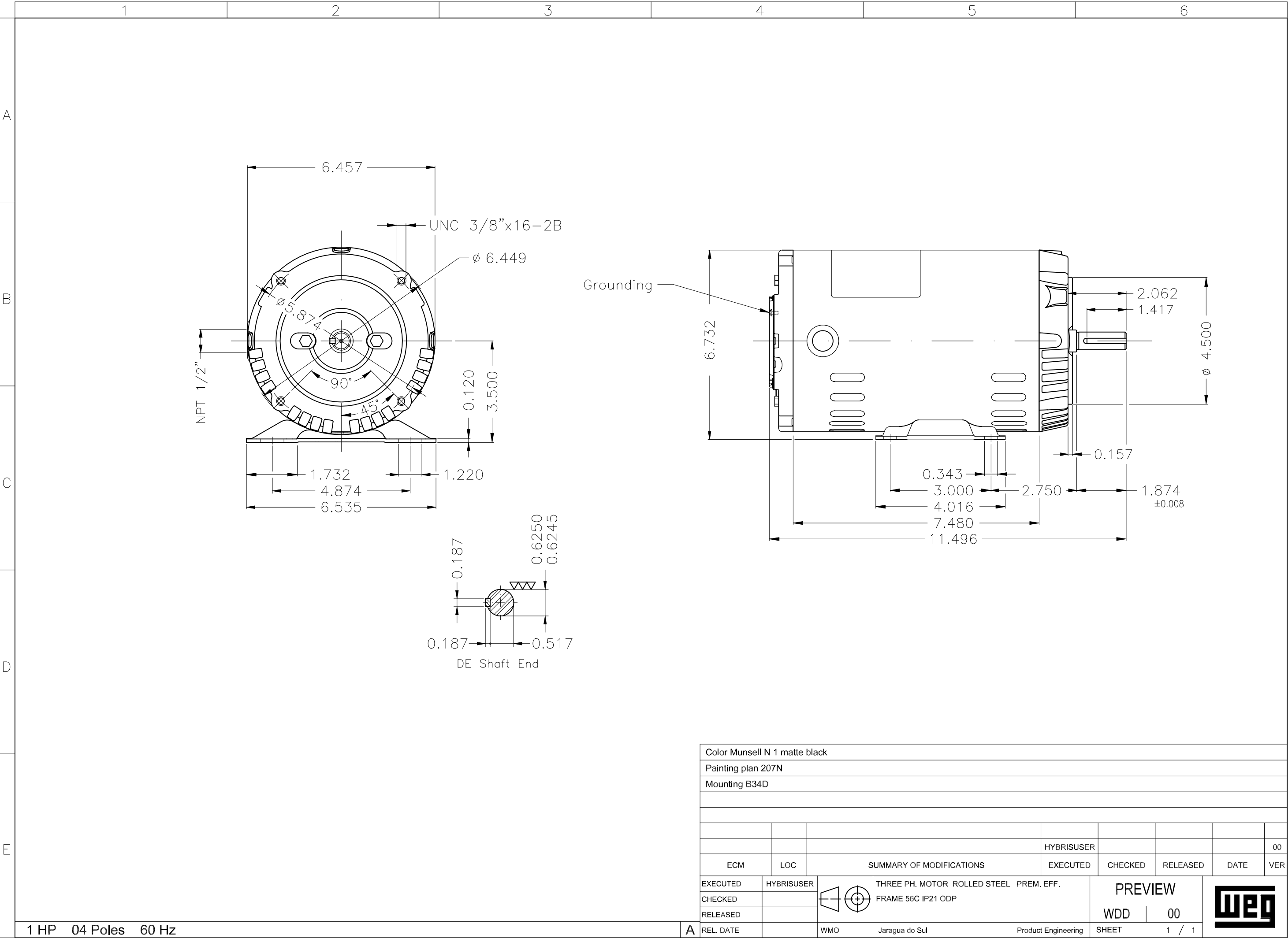


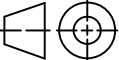

Performance : 575 V 60 Hz 4P

Rated current : 1.26 A
 LRC : 7.6
 Rated torque : 0.412 kgfm
 Locked rotor torque : 280 %
 Breakdown torque : 320 %
 Rated speed : 1760 rpm

Moment of inertia (J) : 0.0036 kgm²
 Duty cycle : Cont.(S1)
 Insulation class : F
 Service factor : 1.15
 Temperature rise : 80 K
 Design : A

Rev.	Changes Summary		Performed	Checked	Date
Performed by				Page	Revision
Checked by				2 / 2	
Date					



Color Munsell N 1 matte black									
Painting plan 207N									
Mounting B34D									
						HYBRISUSER			00
ECM	LOC	SUMMARY OF MODIFICATIONS				EXECUTED	CHECKED	RELEASED	DATE VER
EXECUTED	HYBRISUSER		THREE PH. MOTOR ROLLED STEEL PREM. EFF. FRAME 56C IP21 ODP			PREVIEW			
CHECKED									
RELEASED									
REL. DATE									
		WMO	Jaragua do Sul	Product Engineering	SHEET	1 / 1			