

# DATA SHEET

## Three Phase Induction Motor - Squirrel Cage



Customer :

Product line : Three-Phase

Product code : 13702731

Frame	: 56C	Cooling method	: IC01 - ODP
Insulation class	: F	Mounting	: F-1
Duty cycle	: Cont.(S1)	Rotation <sup>1</sup>	: Both (CW and CCW)
Ambient temperature	: -20°C to +40°C	Starting method	: Direct On Line
Altitude	: 1000 m.a.s.l.	Approx. weight <sup>3</sup>	: 10.9 kg
		Moment of inertia (J)	: 0.0030 kgm <sup>2</sup>

Output [HP]	0.75	0.75	0.75
Poles	4	4	4
Frequency [Hz]	60	50	50
Rated voltage [V]	208-230/460	190/380	220/415
Rated current [A]	2.54-2.30/1.15	2.62/1.31	2.43/1.29
L. R. Amperes [A]	18.5-16.8/8.40	14.9/7.47	15.6/8.26
LRC [A]	7.3x(Code K)	5.7x(Code H)	6.4x(Code J)
No load current [A]	1.38-1.60/0.800	1.53/0.763	1.73/0.917
Rated speed [RPM]	1760	1445	1455
Slip [%]	2.22	3.67	3.00
Rated torque [kgfm]	0.309	0.377	0.374
Locked rotor torque [%]	250	170	210
Breakdown torque [%]	300	240	290
Service factor		1.25	1.25
Temperature rise	80 K	80 K	80 K
Locked rotor time	37s (cold) 21s (hot)	43s (cold) 24s (hot)	36s (cold) 20s (hot)
Noise level <sup>2</sup>	52.0 dB(A)	49.0 dB(A)	49.0 dB(A)
Efficiency (%)	25%		
	50%	74.0	73.6
	75%	78.5	77.8
	100%	81.1	78.9
Power Factor	25%		
	50%	0.52	0.52
	75%	0.65	0.65
	100%	0.74	0.75

Bearing type	: Drive end	Non drive end	Foundation loads
	: 6203 ZZ	6202 ZZ	
Sealing	: Without	Without	Max. traction : 29 kgf
	: Bearing Seal	Bearing Seal	
Lubrication interval	: -	-	Max. compression : 40 kgf
Lubricant amount	: -	-	
Lubricant type	: Mobil Polyrex EM		

### Notes

USABLE @208V SF 1.00

This revision replaces and cancel the previous one, which must be eliminated.

- (1) Looking the motor from the shaft end.
- (2) Measured at 1m and with tolerance of +3dB(A).
- (3) Approximate weight subject to changes after manufacturing process.
- (4) At 100% of full load.

These are average values based on tests with sinusoidal power supply, subject to the tolerances stipulated in NEMA MG-1.

Rev.	Changes Summary	Performed	Checked	Date
Performed by				
Checked by				
Date	17/05/2022			

Page 1 / 4  
Revision

# LOAD PERFORMANCE CURVE

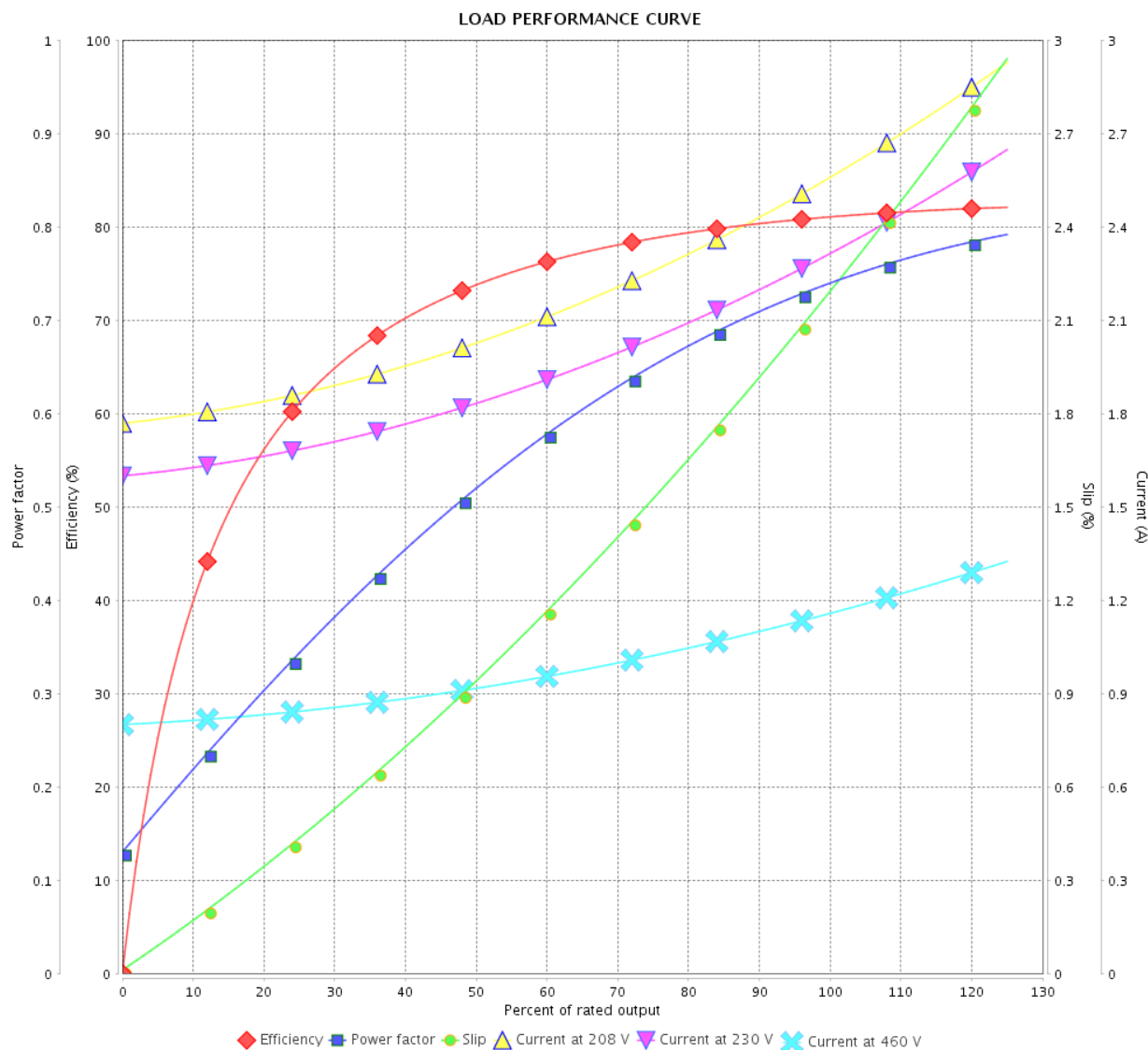
Three Phase Induction Motor - Squirrel Cage



Customer :

Product line : Three-Phase

Product code : 13702731



Performance : 208-230/460 V 60 Hz 4P

Rated current : 2.54-2.30/1.15 A  
 LRC : 7.3  
 Rated torque : 0.309 kgfm  
 Locked rotor torque : 250 %  
 Breakdown torque : 300 %  
 Rated speed : 1760 rpm

Moment of inertia (J) : 0.0030 kgm<sup>2</sup>  
 Duty cycle : Cont.(S1)  
 Insulation class : F  
 Service factor :  
 Temperature rise : 80 K

Rev.	Changes Summary		Performed	Checked	Date
Performed by				Page	Revision
Checked by				2 / 4	
Date					

# LOAD PERFORMANCE CURVE

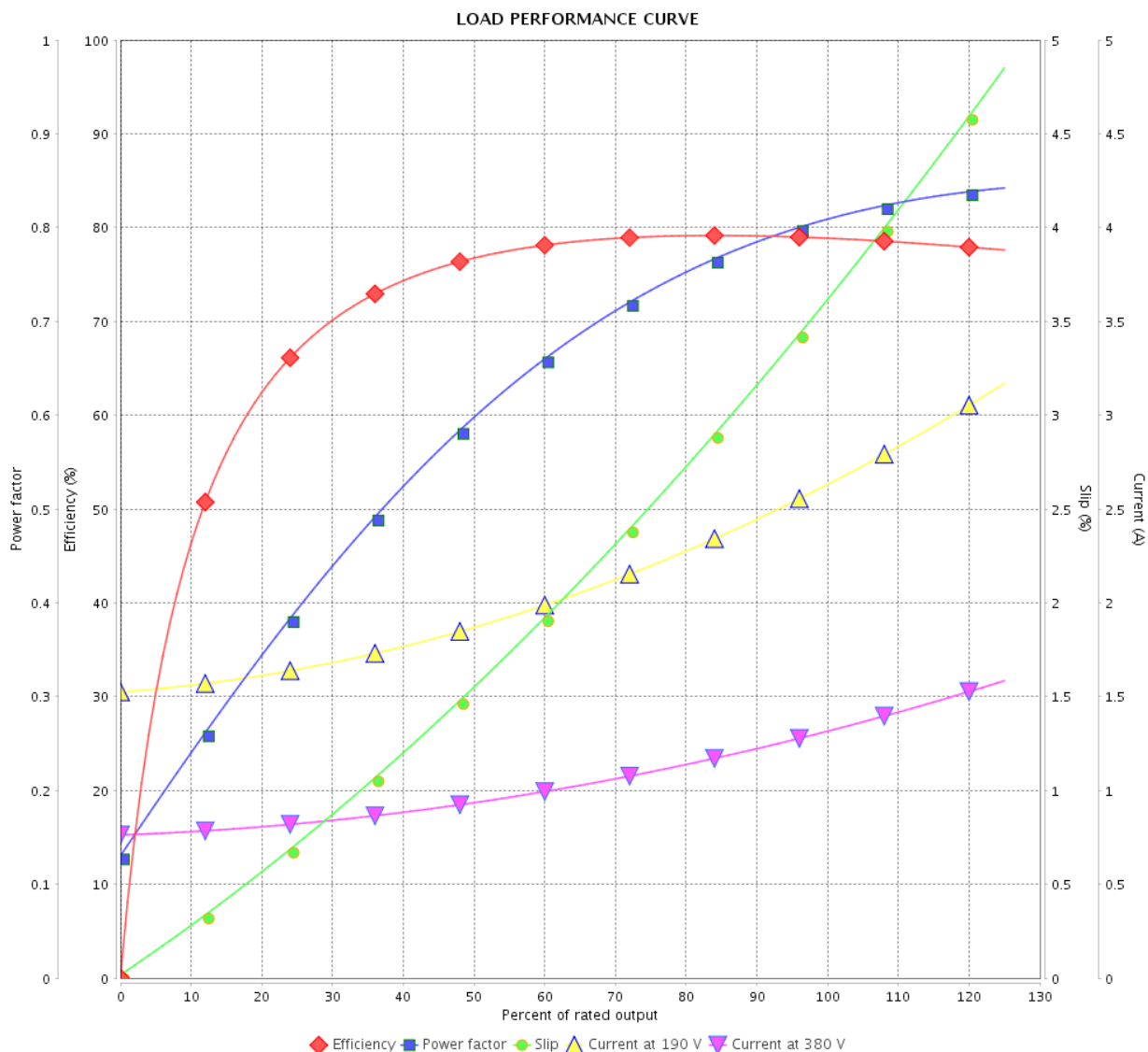
## Three Phase Induction Motor - Squirrel Cage



Customer :

Product line : Three-Phase

Product code : 13702731



Performance : 190/380 V 50 Hz 4P

Rated current : 2.62/1.31 A  
 LRC : 5.7  
 Rated torque : 0.377 kgfm  
 Locked rotor torque : 170 %  
 Breakdown torque : 240 %  
 Rated speed : 1445 rpm

Moment of inertia (J) : 0.0030 kgm<sup>2</sup>  
 Duty cycle : Cont.(S1)  
 Insulation class : F  
 Service factor : 1.25  
 Temperature rise : 80 K

Rev.	Changes Summary	Performed	Checked	Date
Performed by		Page 3 / 4Revision		
Checked by				
Date	17/05/2022			

# LOAD PERFORMANCE CURVE

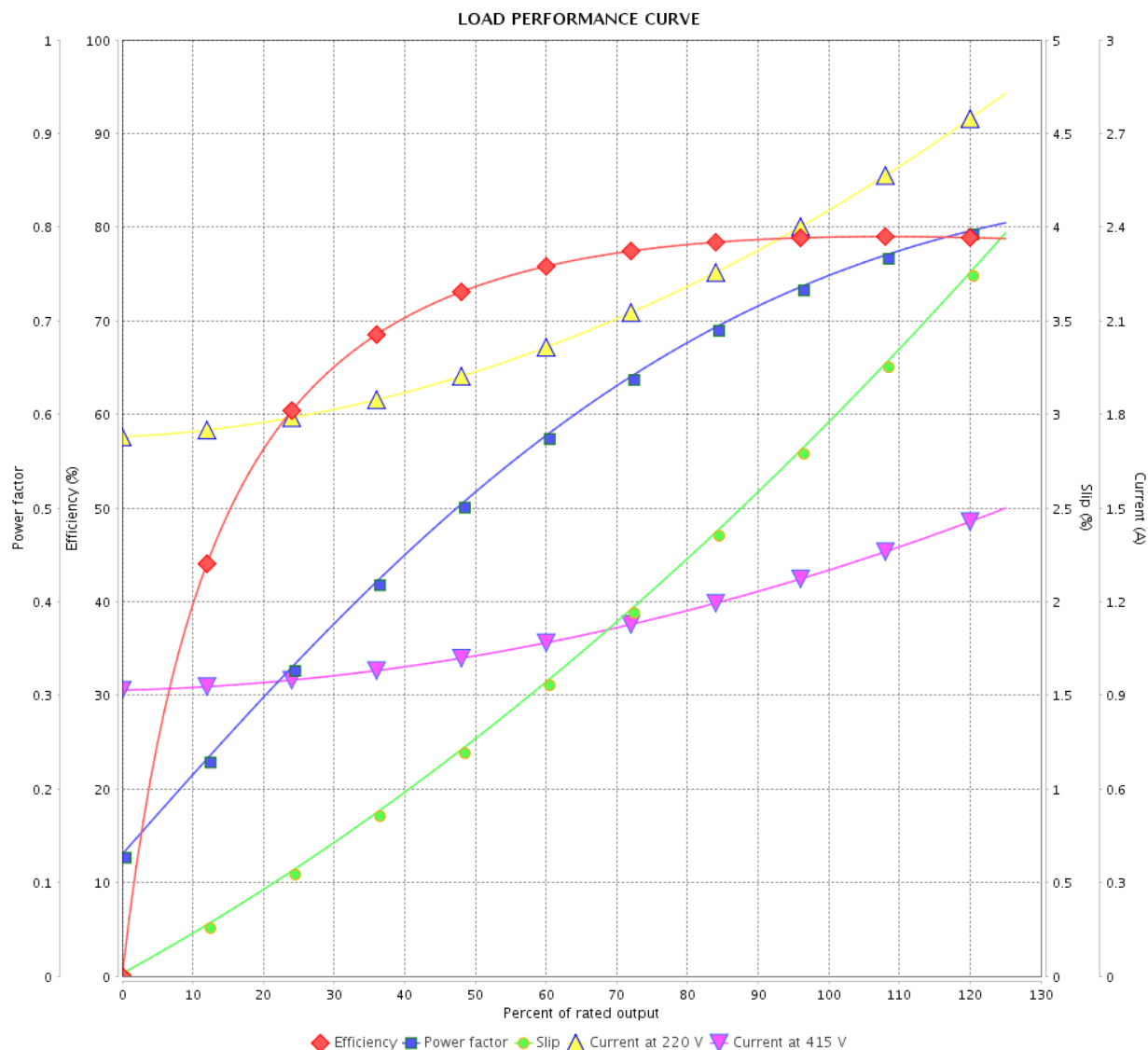
## Three Phase Induction Motor - Squirrel Cage



Customer :

Product line : Three-Phase

Product code : 13702731

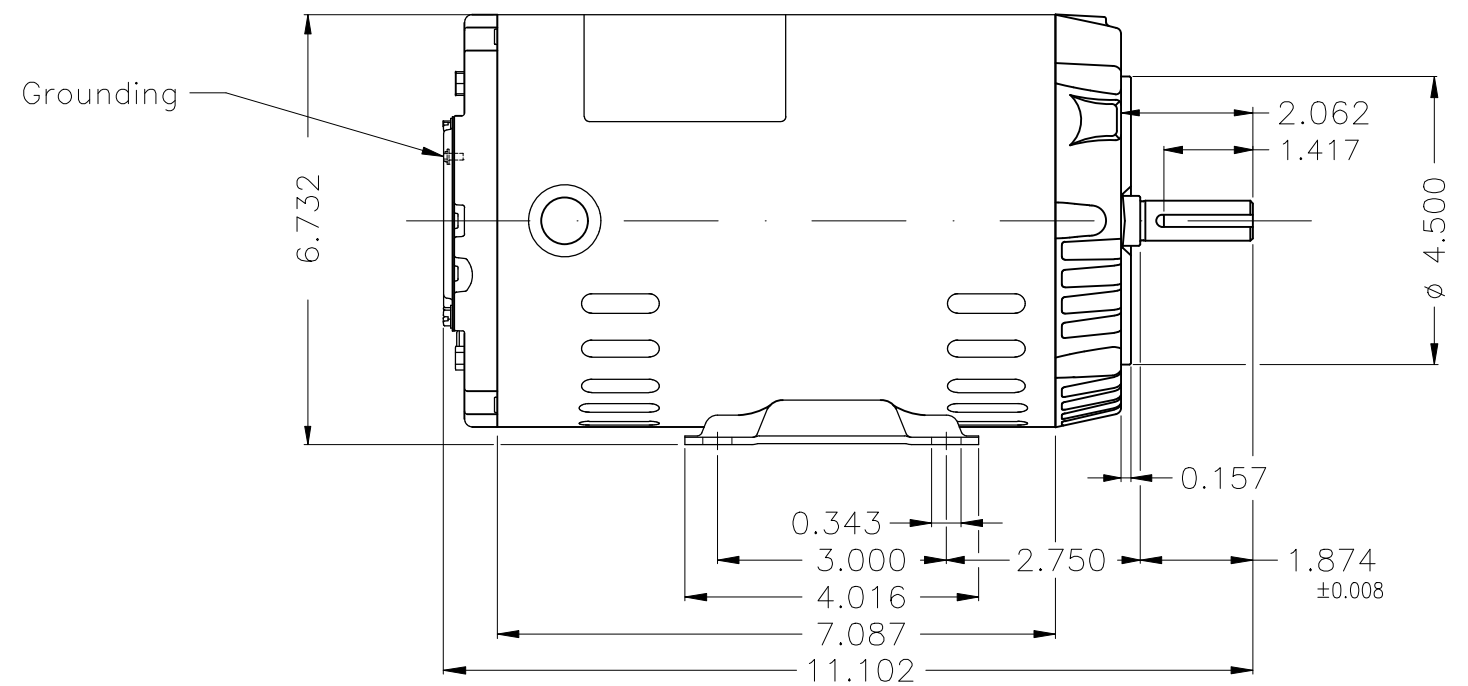
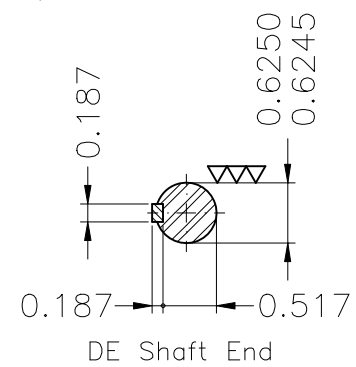
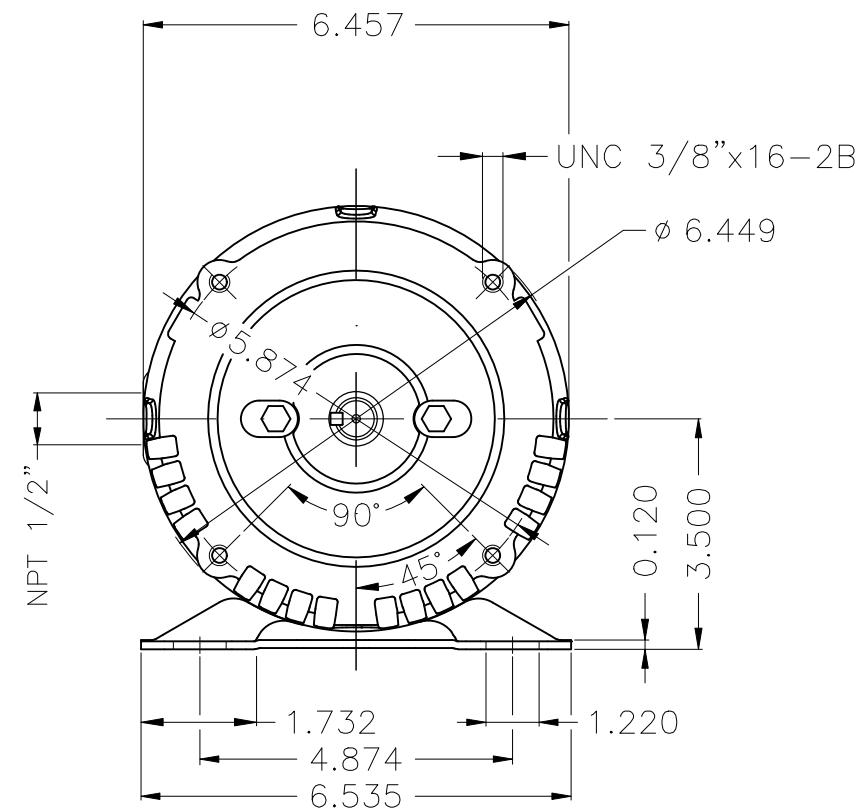




Performance : 220/415 V 50 Hz 4P

Rated current : 2.43/1.29 A  
 LRC : 6.4  
 Rated torque : 0.374 kgfm  
 Locked rotor torque : 210 %  
 Breakdown torque : 290 %  
 Rated speed : 1455 rpm

Moment of inertia (J) : 0.0030 kgm<sup>2</sup>  
 Duty cycle : Cont.(S1)  
 Insulation class : F  
 Service factor : 1.25  
 Temperature rise : 80 K

Rev.	Changes Summary	Performed	Checked	Date
Performed by		<div>Page</div> <div>4 / 4</div> <div>Revision</div>		
Checked by				
Date	17/05/2022			



Color Munsell N 1 matte black																
Painting plan 207N																
Mounting B34D																
						HYBRISUSER						00				
ECM		LOC	SUMMARY OF MODIFICATIONS					EXECUTED	CHECKED		RELEASED		DATE		VER	
EXECUTED		HYBRISUSER			THREE PH. MOTOR ROLLED STEEL PREM. EFF. FRAME 56C IP21 ODP					PREVIEW						
CHECKED																
RELEASED																
REL. DATE			WMO		Jaragua do Sul			Product Engineering		SHEET		1 / 1				