

# DATA SHEET

## Three Phase Induction Motor - Squirrel Cage



|  |   |  |                           |          |
|--|---|--|---------------------------|----------|
| Customer :   |   |  |                           |          |
| Product line   |   | : Standard Efficiency Three-Phase  | Product code :            | 13377249 |
| Frame  | : 56C                                       | Cooling method   | : IC01 - ODP              |          |
| Insulation class   | : F   | Mounting   | : F-1                     |          |
| Duty cycle   | : Cont.(S1)                                 | Rotation <sup>1</sup>  | : Both (CW and CCW)       |          |
| Ambient temperature  | : -20°C to +40°C                            | Starting method  | : Direct On Line          |          |
| Altitude   | : 1000 m.a.s.l.                             | Approx. weight <sup>3</sup>  | : 8.1 kg                  |          |
|  |   | Moment of inertia (J)  | : 0.0019 kgm <sup>2</sup> |          |
| Output [HP]  | 0.5   |  |                           |          |
| Poles  | 4   |  |                           |          |
| Frequency [Hz]   | 60  |  |                           |          |
| Rated voltage [V]  | 575   |  |                           |          |
| Rated current [A]  | 0.782                                       |  |                           |          |
| L. R. Amperes [A]  | 4.69  |  |                           |          |
| LRC [A]  | 6.0x(Code L)                                |  |                           |          |
| No load current [A]  | 0.640                                       |  |                           |          |
| Rated speed [RPM]  | 1755  |  |                           |          |
| Slip [%]   | 2.50  |  |                           |          |
| Rated torque [kgfm]  | 0.207                                       |  |                           |          |
| Locked rotor torque [%]  | 220   |  |                           |          |
| Breakdown torque [%]   | 290   |  |                           |          |
| Service factor   | 1.25  |  |                           |          |
| Temperature rise   | 80 K  |  |                           |          |
| Locked rotor time  | 41s (cold) 23s (hot)                        |  |                           |          |
| Noise level <sup>2</sup>   | 52.0 dB(A)                                  |  |                           |          |
| Efficiency (%)   | 25%   |  |                           |          |
|  | 50%   | 64.0   |                           |          |
|  | 75%   | 70.0   |                           |          |
|  | 100%  | 72.0   |                           |          |
| Power Factor   | 25%   |  |                           |          |
|  | 50%   | 0.43   |                           |          |
|  | 75%   | 0.56   |                           |          |
|  | 100%  | 0.66   |                           |          |
| Bearing type   | : Drive end 6203 ZZ Non drive end 6202 ZZ   | Foundation loads   |                           |          |
| Sealing  | : Without Without Bearing Seal Bearing Seal | Max. traction : 15 kgf   |                           |          |
|  |   | Max. compression : 23 kgf  |                           |          |
| Lubrication interval   | : - -                                       |  |                           |          |
| Lubricant amount   | : - -                                       |  |                           |          |
| Lubricant type   | : Mobil Polyrex EM                          |  |                           |          |
| Notes  |   |  |                           |          |
|  |   |  |                           |          |
| This revision replaces and cancel the previous one, which must be eliminated.<br>(1) Looking the motor from the shaft end.<br>(2) Measured at 1m and with tolerance of +3dB(A).<br>(3) Approximate weight subject to changes after manufacturing process.<br>(4) At 100% of full load. |   | These are average values based on tests with sinusoidal power supply, subject to the tolerances stipulated in NEMA MG-1. |                           |          |
| Rev.   | Changes Summary                             |  | Performed                 | Checked  |
|  |   |  |                           |          |
| Performed by   |   |  | Page<br>1 / 2             | Revision |
| Checked by   |   |  |                           |          |
| Date   | 17/05/2022                                  |  |                           |          |

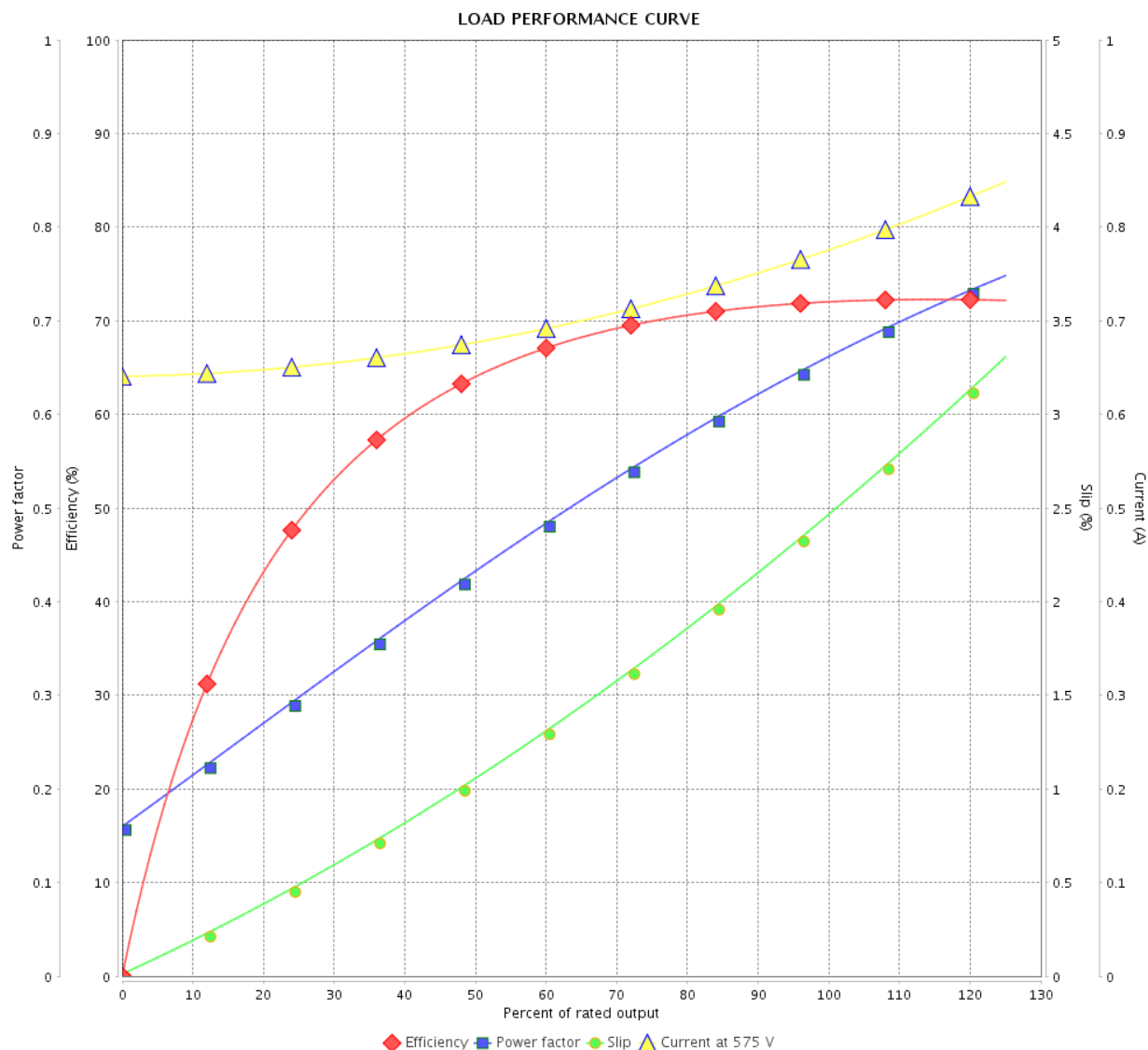
# LOAD PERFORMANCE CURVE

## Three Phase Induction Motor - Squirrel Cage



Customer :

Product line : Standard Efficiency Three-Phase Product code : 13377249

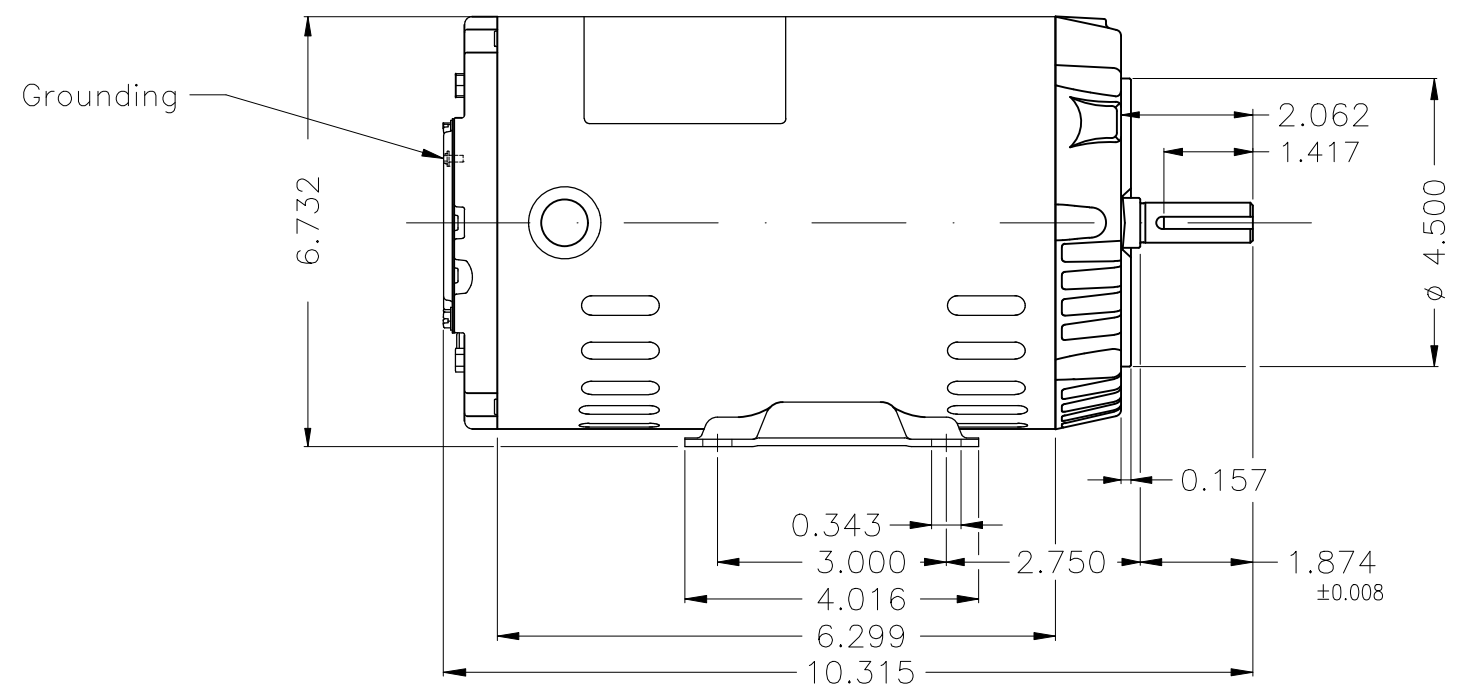
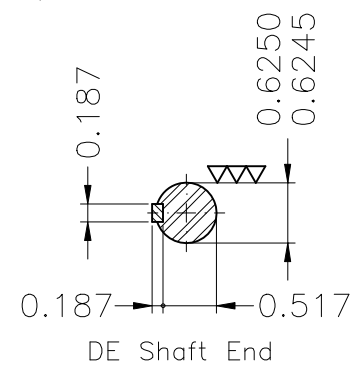
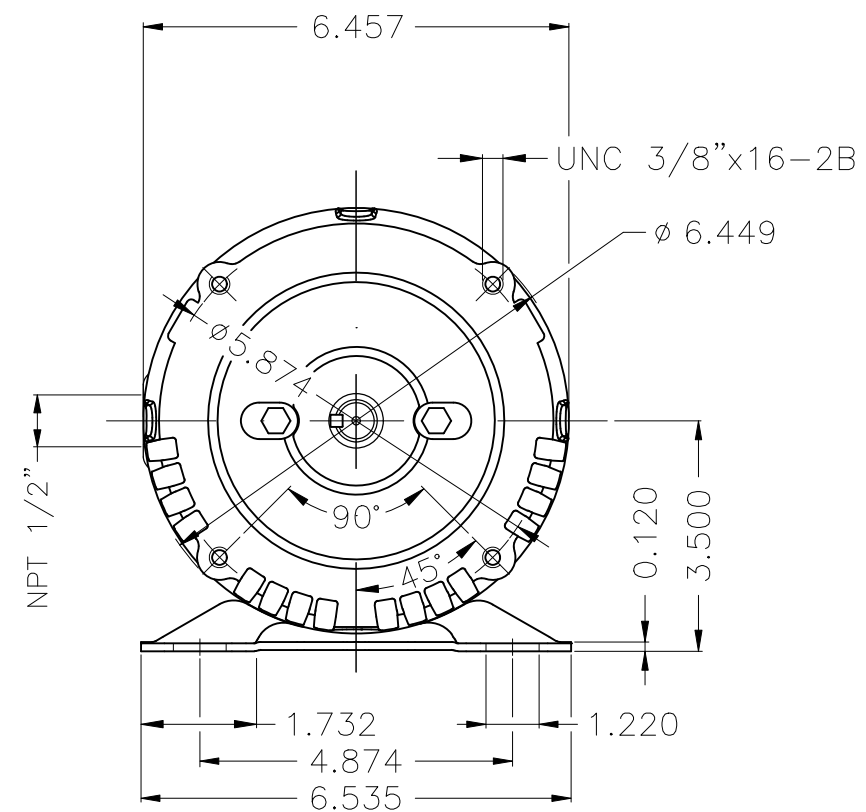


Performance : 575 V 60 Hz 4P

Rated current : 0.782 A  
 LRC : 6.0  
 Rated torque : 0.207 kgfm  
 Locked rotor torque : 220 %  
 Breakdown torque : 290 %  
 Rated speed : 1755 rpm

Moment of inertia (J) : 0.0019 kgm<sup>2</sup>  
 Duty cycle : Cont.(S1)  
 Insulation class : F  
 Service factor : 1.25  
 Temperature rise : 80 K

| Rev.         | Changes Summary | Performed                                 | Checked | Date |
|--------------|-----------------|---|---------|------|
|              |                 |   |         |      |
| Performed by |                 | <div>Page 2 / 2</div> <div>Revision</div> |         |      |
| Checked by   |                 |   |         |      |
| Date         | 17/05/2022      |   |         |      |



Dimensions in inches

Color Munsell N 1 matte black

Painting plan 207N

Mounting B34D

[illegible]

XME A3