

DATA SHEET

Single Phase Induction Motor - Squirrel Cage



Customer :

Product line : Compressor Duty Single-Phase Product code : 10021789

Frame	: G56H	Locked rotor time	: 10s (cold) 6s (hot)
Output	: 5 HP (3.7 kW)	Temperature rise	: 105 K
Poles	: 2	Duty cycle	: Cont.(S1)
Frequency	: 60 Hz	Ambient temperature	: -20°C to +40°C
Rated voltage	: 208-230 V	Altitude	: 1000 m.a.s.l.
Rated current	: 21.0-19.1 A	Protection degree	: IP21
L. R. Amperes	: 137-124 A	Cooling method	: IC01 - ODP
LRC	: 6.5x(Code G)	Mounting	: F-1
No load current	: 3.19-3.70 A	Rotation ¹	: Both (CW and CCW)
Rated speed	: 3455 rpm	Starting method	: Direct On Line
Slip	: 4.03 %	Approx. weight ³	: 21.9 kg
Rated torque	: 1.05 kgfm		
Locked rotor torque	: 220 %		
Breakdown torque	: 200 %		
Insulation class	: F		
Service factor	: 1.00		
Moment of inertia (J)	: 0.0030 kgm ²		

Output	50%	75%	100%	Foundation loads	
Efficiency (%)	83.0	85.0	85.0	Max. traction	: 56 kgf
Power Factor	0.99	0.99	0.99	Max. compression	: 78 kgf

		<u>Drive end</u>	<u>Non drive end</u>
Bearing type	:	6204 ZZ	6203 ZZ
Sealing	:	Without Bearing Seal	Without Bearing Seal
Lubrication interval	:	-	-
Lubricant amount	:	-	-
Lubricant type	:	Mobil Polyrex EM	

Notes

This revision replaces and cancel the previous one, which must be eliminated.

- (1) Looking the motor from the shaft end.
- (2) Measured at 1m and with tolerance of +3dB(A).
- (3) Approximate weight subject to changes after manufacturing process.
- (4) At 100% of full load.

These are average values based on tests with sinusoidal power supply, subject to the tolerances stipulated in NEMA MG-1.

Rev.	Changes Summary	Performed	Checked	Date
Performed by		Page 1 / 2 Revision		
Checked by				
Date	13/09/2025			

LOAD PERFORMANCE CURVE

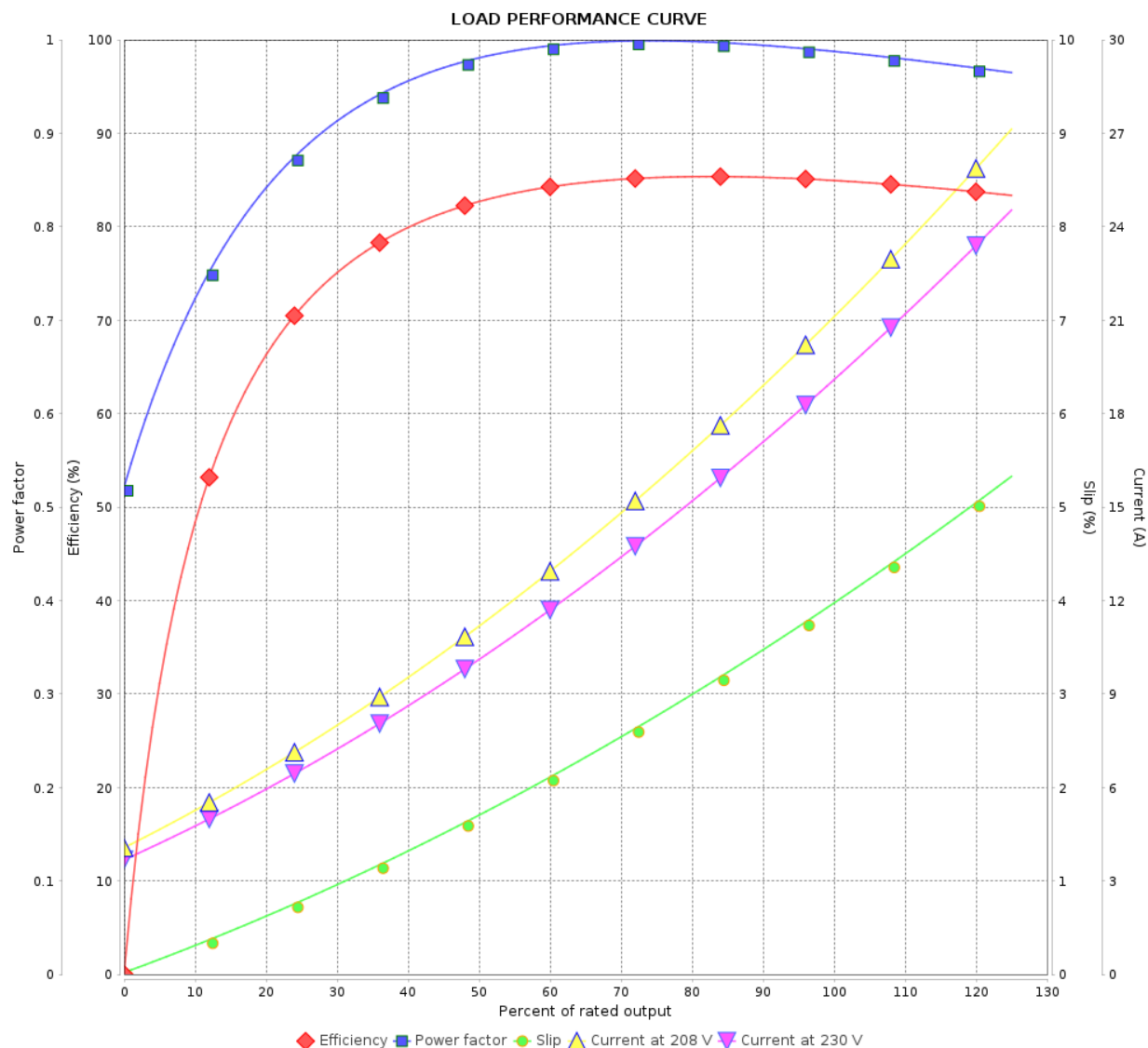
Single Phase Induction Motor - Squirrel Cage



Customer :

Product line : Compressor Duty Single-Phase

Product code : 10021789

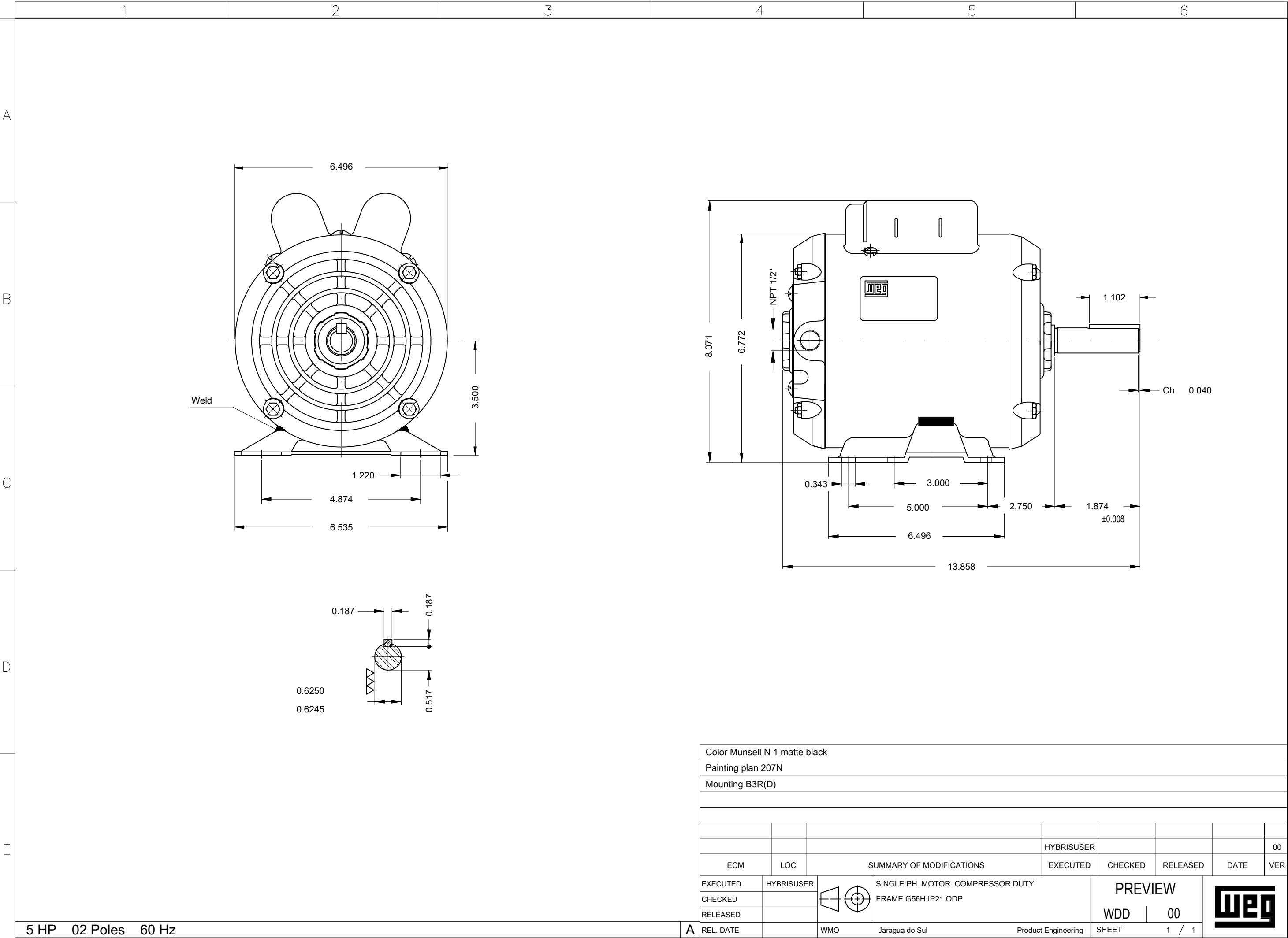


Performance : 208-230 V 60 Hz 2P

Rated current : 21.0-19.1 A
LRC : 6.5
Rated torque : 1.05 kgfm
Locked rotor torque : 220 %
Breakdown torque : 200 %
Rated speed : 3455 rpm

Moment of inertia (J) : 0.0030 kgm²
Duty cycle : Cont.(S1)
Insulation class : F
Service factor :
Temperature rise : 105 K

Rev.	Changes Summary	Performed	Checked	Date
Performed by		Page 2 / 2Revision		
Checked by				
Date	13/09/2025			



Color Munsell N 1 matte black									
Painting plan 207N									
Mounting B3R(D)									